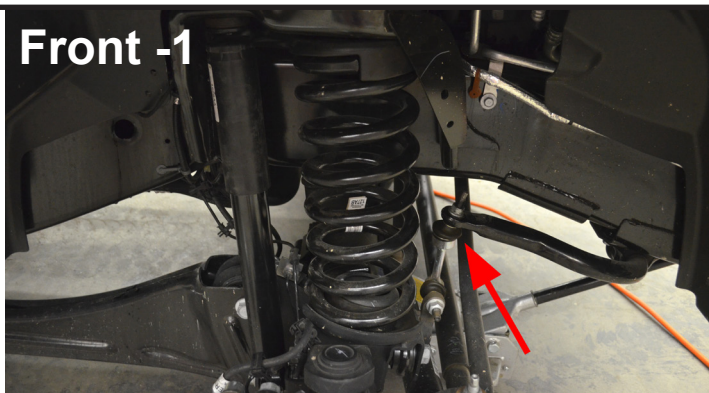


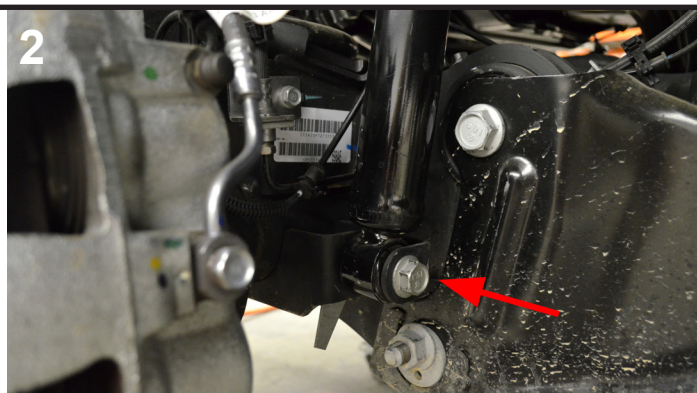
## Installation Instructions - Kit # 605050- 2014 Dodge Ram 2500 4x4 3.5" Front, 2" Rear Lift Kit

### Front -1



Raise the truck with a jack and place on jack stands at the chassis. Remove wheels and tires. Disconnect sway bar link at the sway bar on both sides.

### 2



Disconnect the front shock absorbers at the axle mounts on both sides. Carefully lower the front axle using jack until the coil spring is loose.

### 3



Remove the coil spring and rubber spring isolator from the vehicle. Cut the nipple off of the rubber spring isolator.

### 4



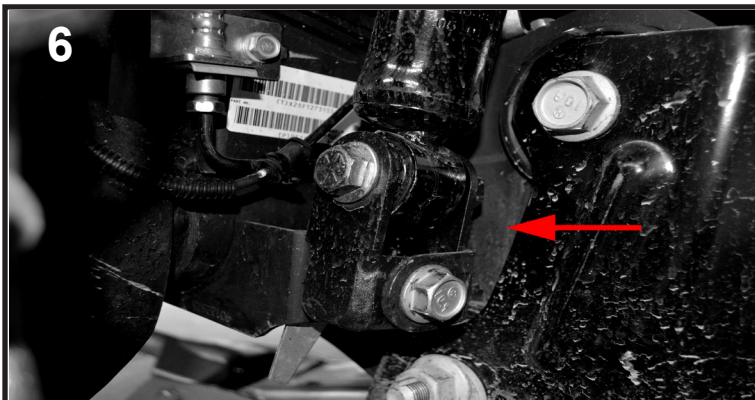
Re-install the isolator onto the spring, and mount the Traxda Coil Spacer above it. Repeat steps 3 and 4 for other side of vehicle.

### 5



Install coil springs and Spacer back into vehicle, and raise the axle while guiding coil springs into place. Make sure the spring is orientated the same way as when it was removed.

### 6



Install Traxda Shock Extensions onto bottom of shocks with provided hardware. Using factory hardware attach extensions onto axle.

### 7

Re-connect sway bar links. Re-torque all hardware to factory settings. Recheck all work, and reinstall wheels.

Make sure to support front axle when installing radius arm brackets. Failure to do so could result in injury or damage

The brackets for left and right are different.

You may find it easiest to do one side at a time, with a tall jackstand supporting the front axle.



Remove Radius Arm bolts and lower arm. Remove two nuts on crossmember.



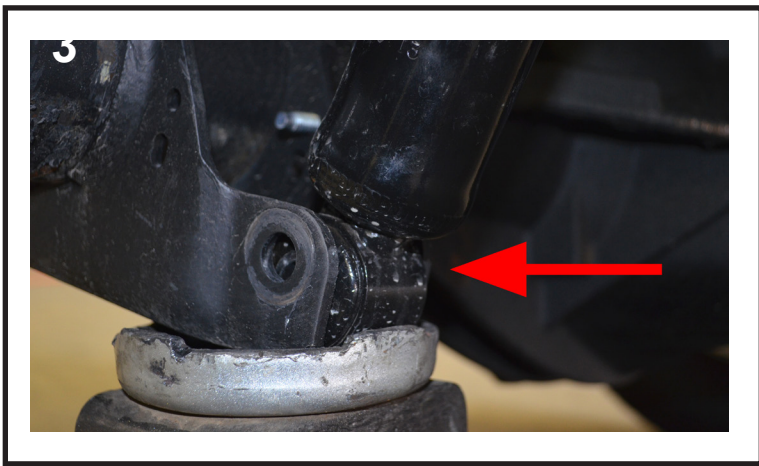
Install radius arm bracket, using supplied bolt and OEM crossmember nuts

**7**

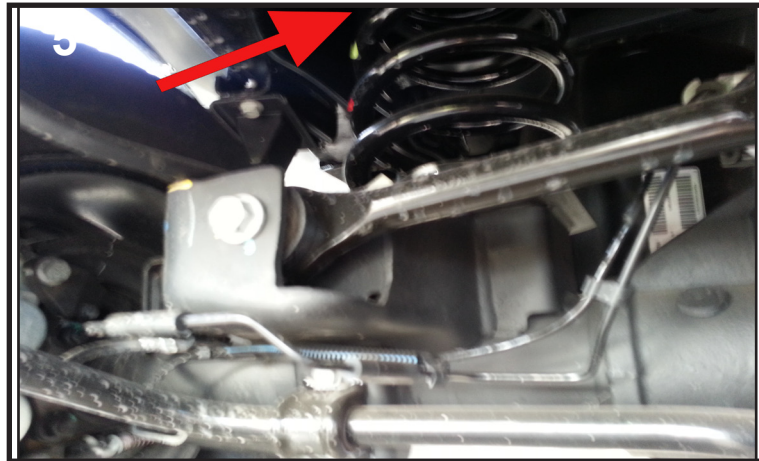
Re-connect sway bar links. Re-torque all hardware to factory settings. Recheck all work, and reinstall wheels.

## Installation Instructions - Kit # 605050- 2014 Dodge Ram 2500 4x4 3.5" Front, 2" Rear Lift Kit

The rear shock has to be removed. Remove bolt at lower end and then undo the stem top at top end. The one inch diameter spacer will go on top of the shock. Then bolt the shock back in at the top.



The spacer will go on top of the spring. BE CAREFUL the axle is heavy. Work on one side at a time to reduce the chance of accident.



One inch spacer shown here on top of spring isolator. The space in the kit should be two inches tall.

Place spacer on top of isolator. Place isolator on top of spring and re-install into truck.



Repeat steps Rear-1 to 7 on the other side of the vehicle. Then recheck all work, and reinstall wheels. Lower vehicle back to the ground.

Once work is completed have a trained technician perform an alignment.

	Left	Right
<b>Camber</b>	0	0
<b>Caster</b>	3	3.5
<b>Total Toe</b>	+1/16"	