



INSTALLATION INSTRUCTIONS

1075 North Ave. Sanger, CA 93657-3539 local: 559-875-0222 fax: 559-876-2259 toll free: 800-445 3767

5557 REAR ANTI-SWAY BAR 05-UP NISSAN TITAN

CONGRATULATIONS!

You were selective enough to choose a BELLTECH PRODUCT. We have spent many hours developing our line of products so that you will receive maximum performance with minimum difficulty during installation.

Note: Confirm that all of the hardware listed in the parts list is in the kit. **DO NOT** begin this installation if any part is missing. Read the instructions thoroughly before beginning this installation.

Warning: **DO NOT** work under a vehicle supported by only a jack. Place support stands securely under the vehicle in the manufacturer's specified locations unless otherwise instructed.

Warning: **DO NOT** drive the vehicle until all work has been completed and checked. Torque all hardware to values specified.

Reminder: Proper use of safety equipment and eye/face/hand protection is absolutely necessary when using these tools to perform procedures!

Note: It is very helpful to have an assistant available during the installation process.

Note: We **DO NOT RECOMMEND** using wheel ramps while performing this installation.

RECOMMENDED TOOLS:

- Blocks and Wheel chocks
- Ratcheting Socket Wrench
- Safety Glasses
- Properly rated floor jacks and support stands
- Combination Wrench set

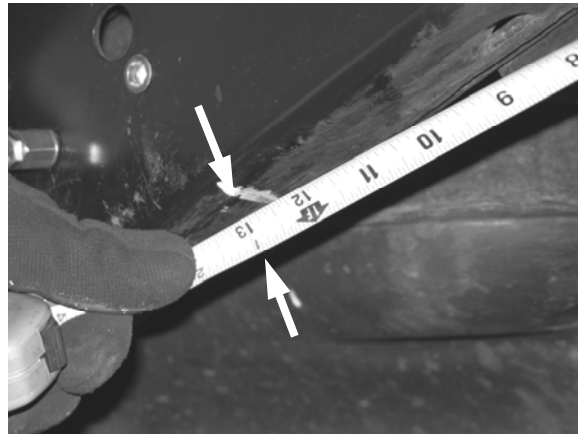
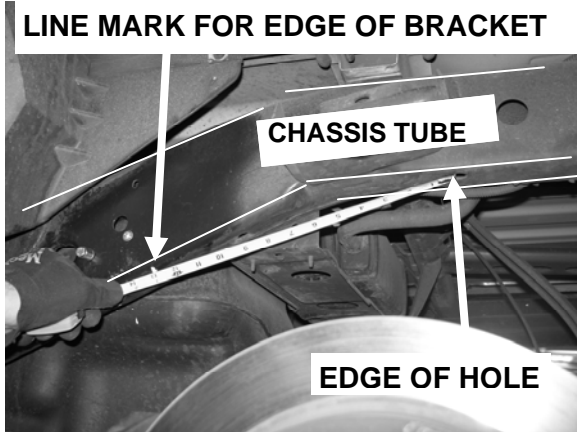
KIT INSTALLATION

1. Open the hardware kit and remove all the contents. Refer to the parts list (Page 7) to verify all parts are present.
2. Park the vehicle on a smooth, level concrete / asphalt surface and put the vehicle in gear or park. Place a block in front of and behind the front wheels. Jack up the rear of the vehicle and place the jack stands in the factory specified locations. Refer to the Owner's Manual.
3. Using a properly rated floor jack, lift the front wheels of the vehicle off the ground. Place the support stands, rated for the vehicle's weight in the factory specified locations. Refer to the vehicle Owner's Manual. Prior to lowering the vehicle onto the stands, make sure the supports will securely contact the chassis.
4. Slowly lower the vehicle onto the stands and, before placing the vehicle's entire weight on them, again check that they properly and securely contact the chassis as described above. Check for possible interference with any lines, wires, cables, or other easily damaged components.

The following steps have been established for ease of installation in sequential order.

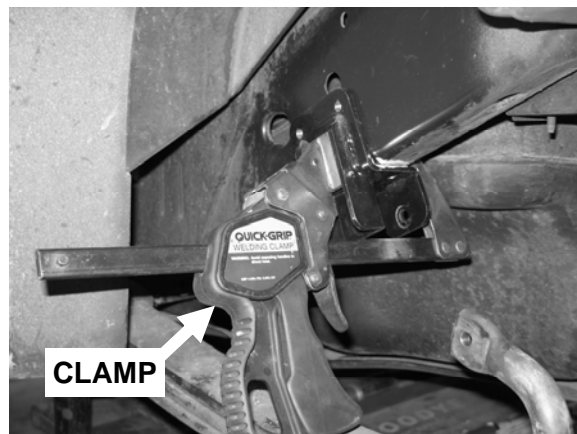
1. MOUNTING THE END LINK BRACKET (THREE SIDE MOUNTING HOLES)

STEP 1A: Locate the END LINK BRACKET 13" from the edge of the hole to the edge of the END LINK BRACKET (Chassis tube is outlined in white). Use some type of marker to mark the edge of the END LINK BRACKET edge onto the underside of the chassis tube frame as shown.



STEP 1B: With a cleaning solvent, clean the area where the END LINK BRACKET will be located.

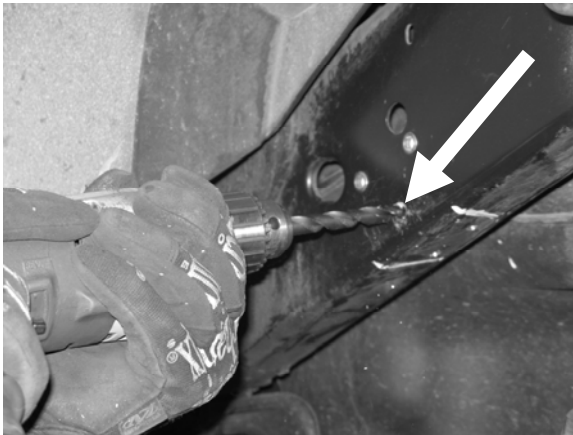
STEP 1C: Using a clamp, clamp the END LINK BRACKET at this location flush against the chassis frame.



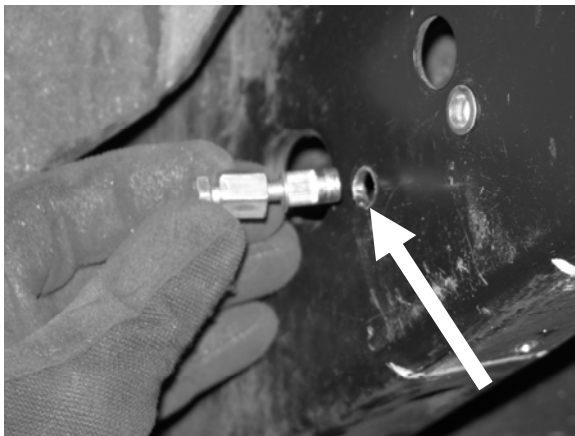
STEP 1D: Using a 9/32 drill bit, and with the END LINK BRACKET clamped in place, drill the three (3) clearance holes into the chassis tube frame.



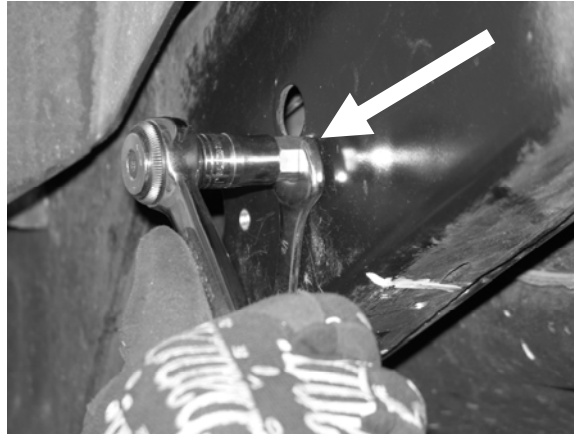
STEP 1E: Un-clamp the END LINK BRACKET, removing it from the chassis frame. Using a 3/8" drill bit, clearance the three existing holes in the chassis tube frame.



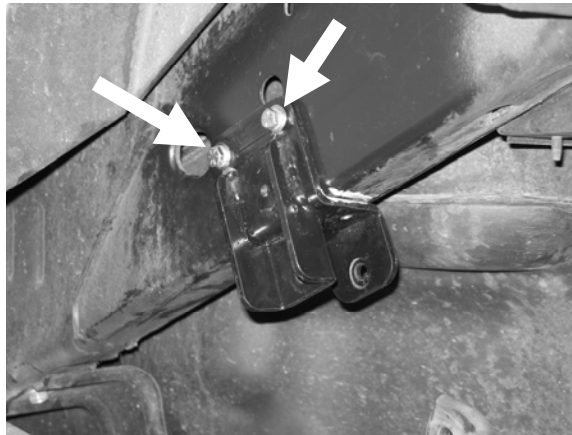
STEP 1F: With the END LINK BRACKET off the chassis tube frame and the three holes drilled out to 3/8", insert the nut-serts supplied with the kit (there should be a total of 10 in the kit) (See Parts List). With the nut-sert, nut sleeve and bolt assembled, push the nut-sert into the holes, making sure they are flush to the chassis tube frame.



STEP 1G: To lock the nut-sert in place in the chassis tube frame, using a 7/16" wrench or a ratchet with a 7/16 socket head (bolt) and a 1/2" wrench (nut sleeve), begin tightening the bolt. The knurl end of the nut-sert locks into the thickness of the chassis tube frame, while the end expands on the inside. Tighten until you are not able to turn it anymore, just stopping short of not being able to turning it. Do this for all three holes that have been just drilled.



STEP 1H: Remove all three mounting bolts (1/4-25 x 1") that were just used to mount the nut-serts. Re-mount the END LINK BRACKET, tightening all three mounting bolts. WE RECOMMEND mounting all three mounting bolts at this stage.



2. MOUNTING THE END LINK BRACKET (TWO UNDER-SIDE MOUNTING HOLES)

STEP 2A: With the END LINK BRACKET mounted and secured at this point, transfer the two holes on the under-side of the END LINK BRACKET. WE RECOMMEND when drilling the clearance holes, 9/32" for the two, that you leave the END LINK BRACKET in place while doing this. The BRACKET will serve as a guide so the drill will not drift while you are drilling.



STEP 2B: Remove the END LINK BRACKET

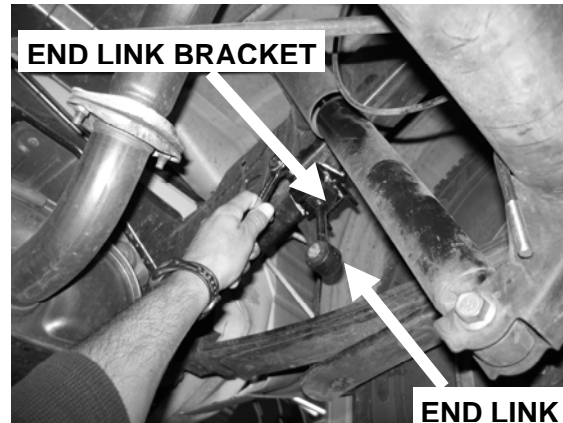
STEP 2C: Using a 3/8" drill, drill out the two 9/32" holes.

STEP 2D: Insert the nut-serts, the same way as in STEP 1F and 1G.

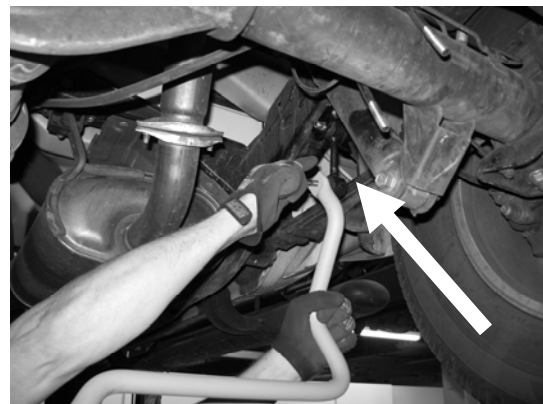
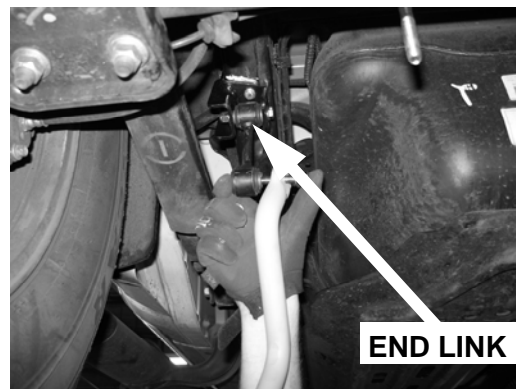
STEP 2E: Remove the bolts and re-mount the END LINK BRACKET, mounting all five mounting hardware and tighten. Torque the hardware to specs.

3. MOUNTING THE NEW ANTI-SWAY BAR

STEP 3A: With the new END LINK BRACKETS mounted to the chassis frame, install the end links to the END LINK BRACKET. Using a 9/16 wrenches, tighten the mounting hardware to torque specs.

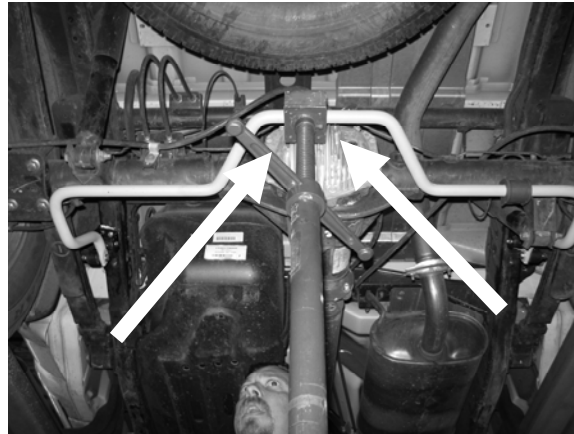


STEP 3B: The simplest way to install the new Anti-Sway Bar is by mounting the ends of the Sway Bar to the ends of the end links. Begin by attaching one end at a time. Using an adjustable jack stand to help in supporting the Anti-Sway Bar, hold one end up to the end link and insert the mounting hardware. Do this to both ends.

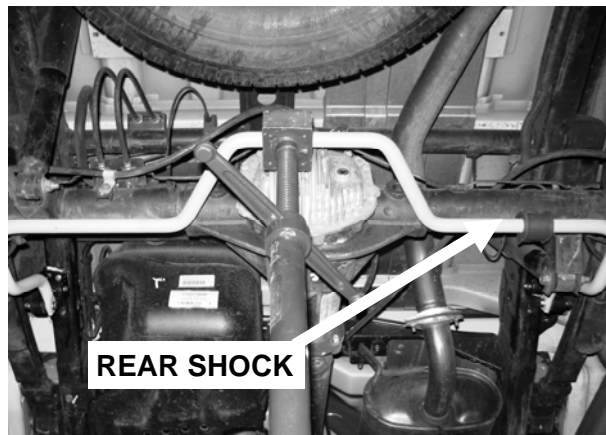
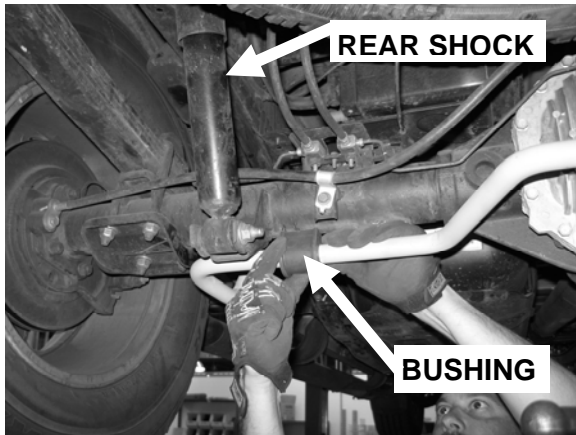


STEP 3C: Tighten both hardware to torque specs.

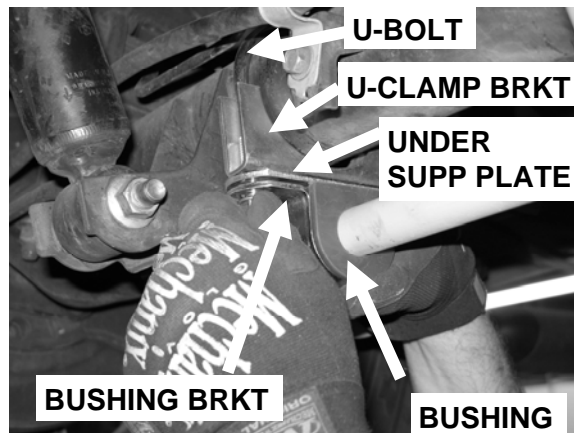
STEP 3D: Once the end link hardware has been tighten, rotate the new Anti-Sway Bar upwards to the rear drive train. Place the adjustable jack stand underneath the Anti-Sway Bar. Adjust the Sway Bar upwards.



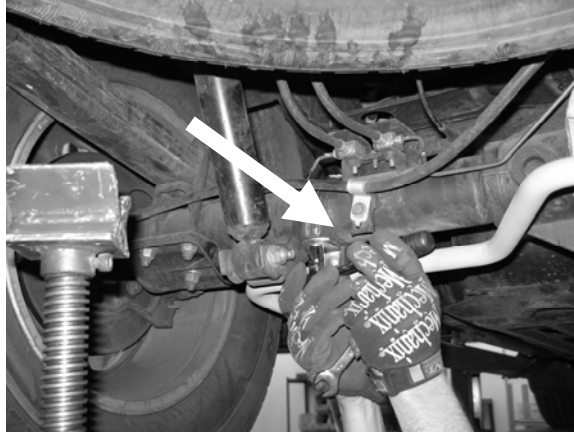
STEP 3E: Locate the drivers side bushing near the inside of the rear shock. The passengers bushing near the inside of the rear shock.



STEP 3F: Slide the U-shape mount screw over the top of the rear axle, with the legs pointing downward. The U-CLAMP bracket will face up with the legs facing upwards. The UNDER SUPPORT PLATE will locate between the UNDER SUPPORT PLATE and the back of the BUSHING. The BUSHING BRACKET will slide over the BUSHING mating up with the U-CLAMP.



STEP 3G: Using a 9/16 wrench or a ratchet with a 9/16 socket head, tighten and lock down the mounting hardware.



FINALIZING THE INSTALLATION

- STEP 4A:** Check that all components and fasteners have been properly installed, tightened and torqued.
- STEP 4B:** Check brake hoses, steering and other components for any possible interference.
- STEP 4C:** Lift the vehicle and remove the support stands. Carefully lower the vehicle to the ground.
- STEP 4D:** Immediately test-drive the vehicle in a remote location so that you can become accustomed to the revised driving characteristics and handling. Be aware that the vehicle will handle substantially different now that it has been modified.
- STEP 4E:** Installation is complete. Check all of the hardware and re-torque at intervals for the first 10, 100, 1000 miles.

PARTS LIST FOR 5557 NISSAN TITAN ANTI-SWAY BAR KIT

PART NUMBER	DESCRIPTION	QTY
5557-300	REAR ANTI-SWAY BAR	1
112258	U-BOLT	2
114038	UNDER SUPPORT PLATE	2
114026	BUSHING BRACKET	2
113075	BUSHING	2
110625	3/8 " WASHER	10
110255	3/8" LOCK NUT	8
112108	3/8-16 x 2-1/2" BOLT	4
114050	END LINK DOG BONE	2
5501	UNIVERSAL END LINK FRAME MOUNT	1