



INSTALLATION INSTRUCTIONS

1075 North Ave. Sanger, CA 93657-3539 toll free: 800-445-3767 web: www.belltechcorp.com

5508 REAR ANTI SWAYBAR C-10 PICK UP

Congratulations! You were selective enough to choose a BELLTECH PRODUCT. We have spent many hours developing our line of products so that you will receive maximum performance with minimum difficulty during installation.

- Note: Confirm that all of the hardware listed in the parts list is in the kit. **Do not** begin installation if any part is missing. Read the instructions thoroughly before beginning this installation.
- Warning:** **DO NOT** work under a vehicle supported by only a jack. Place support stands securely under the vehicle in the manufacturer's specified locations unless otherwise instructed.
- Warning:** **DO NOT** drive vehicle until all work has been completed and checked. Torque all hardware to values specified.
- Reminder: Proper use of safety equipment and eye/face/hand protection is absolutely necessary when using these tools to perform procedures!
- NOTE: This is a relatively complex installation and as such **we recommend** that a qualified mechanic perform it. **We also recommend** that to retain the stability of the leaf spring pack and axle assembly, only one side of the vehicle should be modified at a time.
- NOTE: As it may be necessary to temporarily loosen fuel tank mounting straps to install driver side hanger, we recommend that the fuel level be as close to empty as possible to reduce fuel tank weight.

RECOMMENDED TOOLS:

- Properly rated floor jack, support stands, and wheel chocks
- Combination wrench set
- Torque wrench: 0-75 lb ft. range
- Ratcheting socket wrench and socket sets
- Safety Glasses

KIT INSTALLATION

1. Open the hardware kit and remove all of the contents. Refer to the part list (Page 2) to verify that all parts are present.
2. Park the vehicle on a smooth level asphalt or concrete surface. Place a block in front of and behind the FRONT wheels. Jack up the REAR of the vehicle and place jack stands securely under the frame in the manufacturer's specified locations. Remove the rear wheels.
3. Thoroughly lubricate the inside of you new hyperthane bushings using the grease packet included with the kit. Place the bushings on the new Anti-Sway Bar. Refer to the diagram as to the proper bushing location.
4. Place U-bolts over axle housing (just inside of shock mounts) and loosely fasten Anti-Sway Bar to bottom of axle housing as shown in diagram.

NOTE: Do not place U-bolts over brake lines, as this will cause brake failure.

- Center the Anti-Sway Bar left to right and front to rear and tighten the nuts and washers to 28-32 ft.lbs.
- With the vehicle at ride height, make sure ends of Anti-Sway Bar are parallel with frame rails. Position bolt through hole in the end of Anti-Sway Bar and mark frame rails for drilling. Drill through bottom leg of frame rail using ½” drill bit. Repeat procedure on other side. Tighten the bolt to 28-32 ft/lbs of torque.

CAUTION: Check frame rail location before drilling. Relocate any wiring or fuel lines necessary.

- Fasten ends of Anti-Sway Bar to frame rails as shown in diagram. Tighten the hardware only to the point that the steel spacer sleeve can still be forced to rotate on the bolt by hand.
- If you have any questions, contact a Belltech factory representative at (800) 445-3767. In California, call (559) 875-0222.

Immediately test-drive the vehicle in a remote location so that you can become accustomed to the revised driving characteristics and handling. Be aware that the vehicle will handle substantially different now that it has been modified.

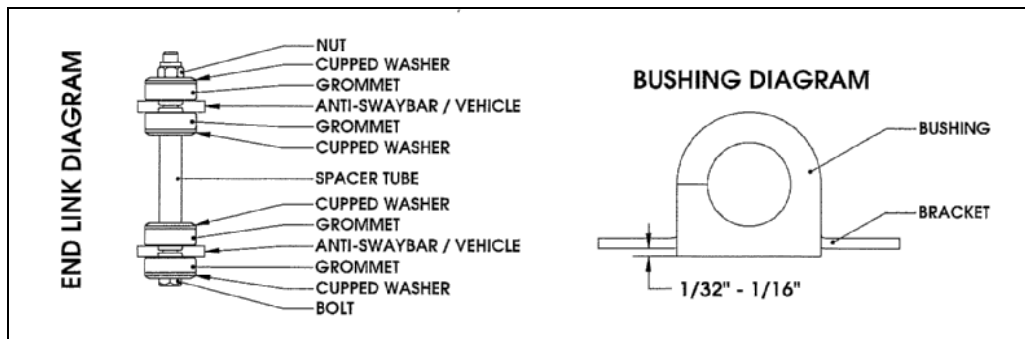
PART LIST FOR 5508 CHEVY C-10 REAR ANTI SWAYBAR KIT

PART No.	DESCRIPTION	QTY.
5508-300	Rear Anti Swaybar	1
113085	Pivot Bushing	2
113000	End Link Grommet	8
112260	U-Clamp 3-1/4”	2
112262	U-Clamp 3-1/2”	2
115003	Under Support Plate	2
115002	Pivot Bushing Bracket	2
112502	Cupped Washer	8
110255	Nylon Insert Lock Nut	6
112144	3/8”-16 x 8” HHCS	2
112430	Spacer Tube	2
110625	Flat Washer	4
55000-10	Grease Pack	1

! BELLTECH INSTALLATION TIPS

LUBRICATION

Pre-lubricating the inside of the bushing before it's installed is important because the lubrication will greatly reduce noise and it will increase bushing life. Belltech recommends you use Molybdenum disulfide. This will help protect the inside surface of the bushing and will last longer than most types of grease. Thoroughly lubricate the inside of the bushing with this grease.



BUSHING INSTALLATION

Make sure an amount of $1/32''$ to $1/16''$ of the bushing is showing when you install it onto the bracket. See the diagram above. If the bushing is showing more than $1/16''$ than use a sander or a sheet of coarse grit sand paper to shave it down to the proper height. In most applications when installing the new bushings on your Belltech Anti-Sway Bar you may refer to your original equipment Anti-Sway Bar to locate the proper location.

END LINK INSTALLATION

It is not required that you use lubricant on the end links since there is not any rotational movement. The Belltech end links are comprise of grommets, cupped washers, a spacer tube, bolt, and lock nut, these assembled components create the end link. See END LINK DIAGRAM above.

AXLE CLAMP DIAGRAM

