

Sport Sway Bar Kit 22109 2010 Chevy Camaro



*Thank you for your purchase from our new line of Chevy parts.
Please call us at 877 - 4NO - ROLL if you have any questions
regarding the service or installation of your Hotchkis Performance products.*

**IMPORTANT: PLEASE READ THE ENTIRE INSTRUCTION MANUAL BEFORE
STARTING THIS INSTALLATION.**

Front Sway Bar Installation

1F *Raise the Vehicle*

Raise front of the vehicle using a floor jack and place jack stands in the proper jacking points. Securely block the rear wheels of the vehicle.



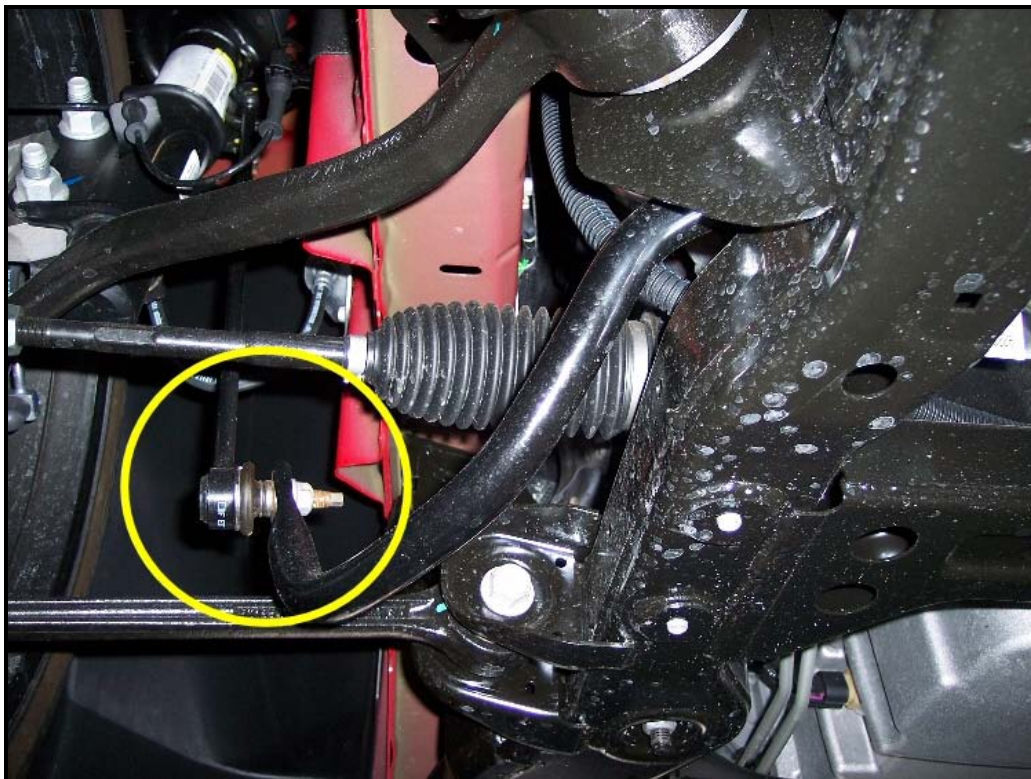
2F *Remove the Driver Side Front Wheel*

The front bar will sneak it's way out towards the driver side. Remove the driver side front wheel to gain more clearance for installation.



3F *Disconnect the Front End Links*

Disconnect the front end links from the sway bar ends on each side.

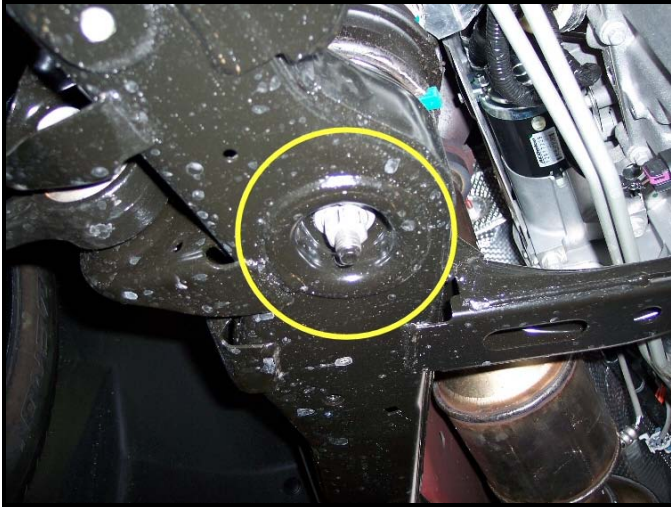


4F *Detach the Sway Bar Bushing Brackets*

Just above the front subframe, the sway bar is attached by 2 bushing brackets, one on each side. Undo the 2 nuts per bracket to detach the sway bar from the subframe.

5F *Raise the Engine*

You will need more room to get the sway bar out from between the subframe and the engine. To do this, unbolt the 2 motor mounts attached to the subframe and jack the engine up. Make sure to use a block of wood between the jack and the engine to avoid damage.



6F *Remove Stock Bar*

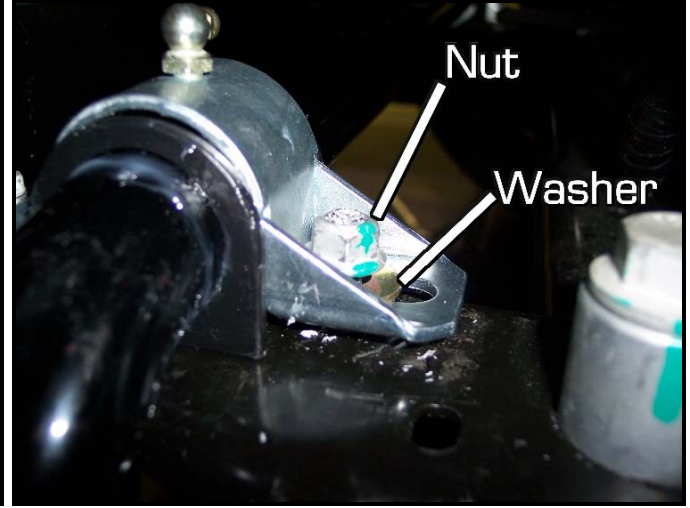
Fish the stock bar towards the driver side until it's completely out. If you need more clearance, carefully raise the engine more until the bar can be removed.



7F *Reinstall the Hotchkis Sway Bar*

Reinstall the Hotchkis Sway Bar in the same manner as stock removal. Your kit comes with new bushings and brackets. Apply the provided silicone grease in the inside area of each bushing. Install the bushings onto the bar. When reinstalling the stock bushing bracket nuts, please use the provided washers from your hardware kit. You should use one washer for each nut totaling 4 for the front installation. Apply a small amount of lock threading compound (included in your kit) on each nut. Make sure to use the brackets that have the 90° grease fitting attached. You may choose to point the fitting towards the outside or inside depending on which direction is easiest for you to regrease in the future.





8F *Reinstall the End Links*

Lower the engine down and fully tighten the motor mount nuts completely. Insert the end links back into the sway bar ends and fully tighten the nuts using the supplied lock threading compound.



9F *Final Inspection*

Before lowering the front end back onto the ground, make sure all hardware is fully tightened. You are finished with the front Hotchkis Sway Bar installation. Let's move on to the rear bar.

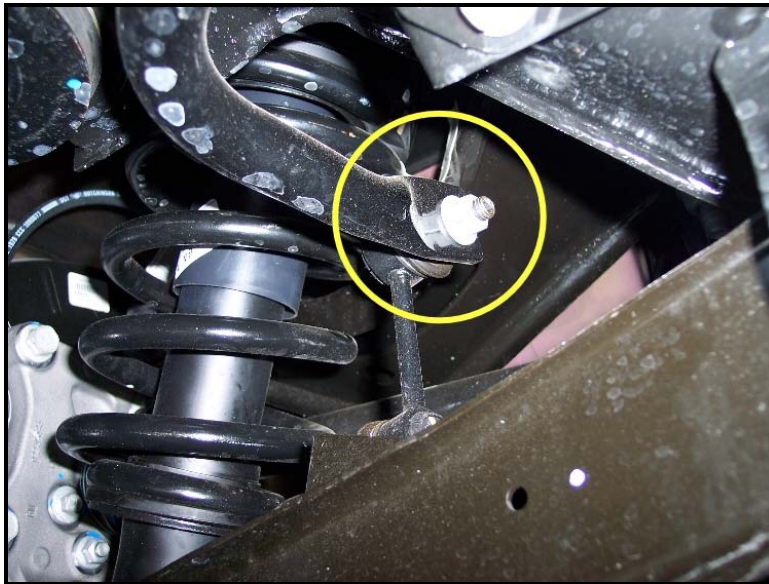
Rear Sway Bar Installation

1R *Raise the Vehicle*

Raise rear of the vehicle by driving the rear of the vehicle onto floor ramps. You may use floor jacks to jack up the rear of the car, but the installation is easier with the suspension at ride height. Once the rear of the vehicle is accessible, securely block the front wheels of the vehicle.

2R *Disconnect the Rear End Links*

Disconnect the rear end links from the sway bar ends on each side.



3R *Detach the Sway Bar Bushing Brackets*

The sway bar is attached by 2 bushing brackets, one on each side. Undo the 2 bolts per bracket to detach the sway bar from the subframe. The bar should be loose from the vehicle. There is enough room to fish the bar completely out without dropping the exhaust.



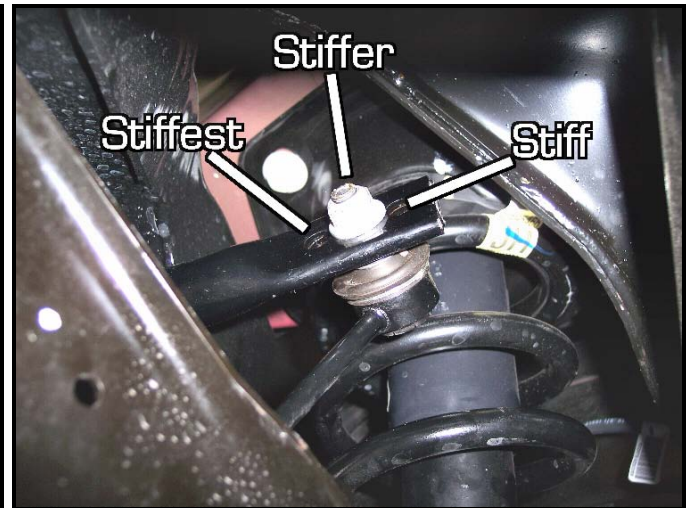
4R *Reinstall the Hotchkis Sway Bar*

Reinstall the Hotchkis Sway Bar in the same manner as stock removal. Your kit comes with new bushings and brackets. Apply the provided silicone grease in the inside area of each bushing. Install the bushings onto the bar. When reinstalling the stock bushing bracket nuts, please use the provided washers from your hardware kit. You should use one washer for each bolt totaling 4 for the rear installation. Apply a small amount of lock threading compound (included in your kit) on each bolt. Make sure to use the brackets that have the straight grease fitting attached. Fully tighten the bracket hardware.



5R *Reinstall the End Links*

Insert the end links back into the sway bar ends and fully tighten the nuts using the supplied lock threading compound.



6R *Final Inspection*

Before lowering the rear end back onto the ground, make sure all hardware is fully tightened. You are finished with the Rear Hotchkis Sway Bar installation. Enjoy your new Sway Bar set.

Hotchkis Performance LLC Return Policy & Limited Warranty

Effective December 1, 2010 all Hotchkis products must be registered to qualify for warranty at www.hotchkis.net or via the mail-in warranty card, included with the product, within 30 days of the original purchase date.

IMPORTANT: This warranty supersedes all other warranties included with this product.

Return Policy

We want you to be completely satisfied with your Hotchkis Performance product. For products, presenting signs of shipping damage please contact the freight carrier immediately. All our products are guaranteed to be free from manufacturer's defects. If your order arrives with a manufacture defect, please contact our Customer Service Department at (562) 907-7757. You will be assigned a Returned Goods Authorization Number (RGA). The package you return must show the RGA on the outside of the package, include the original invoice and be shipped prepaid to our facility. The product has to be unused and in its original packaging materials. Exchanges or refunds made after 30 days will be subject to a 20% restocking charge. **If you purchased your Hotchkis Performance product from an authorized dealer, you are still covered by this return policy. All returns however, should be made to your dealer, not to Hotchkis Performance directly.**

Limited Warranty

Hotchkis Performance offers a Limited Warranty against defects in materials and workmanship for the term of 36 months (3 years) from the date of purchase of this product. This Warranty only applies to the original retail purchaser who retains ownership of the vehicle on which the product was originally installed. If the product is determined to be defective, Hotchkis Performance will repair, replace or refund the purchase price of the defective product at Hotchkis Performance's sole discretion, which shall fully satisfy and discharge any and all warranty claims. Any repaired or replaced product will be returned to the sender excluding the cost of freight. **Products must be registered to qualify for warranty at www.hotchkis.net or via the mail-in warranty card, included with the product, within 30 days of the original purchase date.**

Exclusions from Warranty

Items offered but not manufactured by Hotchkis Performance are warranted according to the manufacturer's terms and are not covered by this limited warranty. Hotchkis Performance shall not be responsible for any labor, removal, installation, re-installation or maintenance costs. This warranty does not cover the cosmetic finish or plating of any product or any normal wear and tear to any product including, but not limited to bushings, brackets, end-links, hardware, steering components, shocks or springs. In addition, this warranty does not apply to any products that have been:

- Improperly installed or installed by someone other than a qualified, licensed auto mechanic experienced in the installation and removal of suspension products;
- Improperly serviced, misused, or modified, altered or subjected to abuse, negligence, accident or collision;
- Installed in any vehicle that has been modified;
- Installed on any vehicle that has carried loads in excess of automobile manufacturer suggested weight limits; or
- Installed on any vehicle that has been subject to abnormal or excessive use, including rallying, racing, or racing-type activities or off-road use.

Limitation of Warranty

This limited warranty is the entire and only warranty for the products and may not be modified or supplemented by any other person or company in any form. Any description of the products, by anyone, is for the sole purpose of identifying them and is not part of the basis of the bargain, and does not constitute a warranty that the products will conform to that description. The statements of any salesperson do not constitute part of this limited warranty and cannot be relied upon as a warranty.

THERE ARE NO WARRANTIES, EXPRESSED OR IMPLIED, INCLUDING ANY IMPLIED WARRANTIES OF MERCHANTABILITY OR FITNESS FOR A PARTICULAR PURPOSE, WHICH EXTEND BEYOND THE DESCRIPTION ON THE FACE HEREOF. ANY IMPLIED WARRANTIES ARE DISCLAIMED TO THE FULLEST EXTENT PERMITTED BY LAW. THIS WARRANTY DOES NOT COVER CONSEQUENTIAL DAMAGES, LOSS OF TIME OR REVENUES, INCONVENIENCE, LOSS OF USE OF THE VEHICLE,



DAMAGE TO THE VEHICLE OR COMPONENTS OF THE VEHICLE, ANY OTHER TYPE OF CONSEQUENTIAL DAMAGES, OR OTHER INCIDENTAL OR INDIRECT DAMAGES. HOTCHKIS' MAXIMUM LIABILITY UNDER THIS WARRANTY SHALL IN NO EVENT EXCEED THE PURCHASE PRICE OF THE PRODUCT. Some states do not allow limitations on how long an implied warranty lasts or the exclusion or limitation of incidental or consequential damages and in such states the above limitations or exclusions may not apply. This limited warranty gives the purchaser specific legal rights and the purchaser may have other rights that may vary from state to state.

Technical Information

Hotchkis Performance makes every effort to ensure that you are provided with the most accurate and up-to-date technical information. However, all technical information is approximate and may vary upon application. Additional suspension components may be needed in some applications, depending upon the make, model, engine and chassis of the vehicle. Hotchkis Performance is not responsible for any consequences resulting from manufacturer's technical mid-year changes. Hotchkis Performance products should only be installed by a qualified, licensed auto mechanic experienced in the installation of such products.

Warranty Claim Procedure:

The answer to ALL the following questions should be YES before making a warranty claim:

- Did you register the product at www.hotchkis.net or via the mail-in warranty card within 30 days of purchase?
- Is the product appropriate to your application?
- Did you carefully and thoroughly read the instructions provided along with the product?
- Do you have the original invoice or sales receipt?
- Is the return date within 36 months from the purchase date?
- Are you the original purchaser?
- Was the product properly installed by a qualified, licensed auto mechanic?
- Has the product been installed on the original vehicle on which it was installed at all times?
- Is the product unmodified and clean?
- Is the reason for return a legitimate product defect?

If the answer to all these questions is YES, please contact our Customer Service Department at (562) 907-7757. You will be given a Returned Goods Authorization Number (RGA) valid for 60 days. You will also be asked to ship the product prepaid to our facility. All shipments MUST be (i) prepaid, (ii) include the original invoice or sales receipt, (iii) show the RGA on the outside of the package and (iv) include your name, address, make and model of the vehicle, and a brief description of the claimed defect, including the circumstances under which the defect occurred. If the warranty claim is deemed valid then Hotchkis will estimate shipping costs to return the repaired or replacement part and contact you for payment. Hotchkis's Limited warranty requires that any repaired or replaced product will be returned to the sender excluding the cost of freight. Warranty related inquiries should be sent to the following address:

**HOTCHKIS PERFORMANCE, LLC
C/O CUSTOMER SERVICE
8633 Sorensen Avenue
SANTA FE SPRINGS, CA 90670**

Hotchkis Performance will not accept product returns without the RGA number, receipt and the information described above. C.O.D. or collect shipments will be refused. Once the returns are received at Hotchkis Performance, we will evaluate the products, verify the sales receipt, and investigate the warranty claim. Any repaired or replaced product will be returned to the sender.

Effective December 1, 2010. This return policy and limited warranty supersedes all previous policy and warranty statements. Policies and warranties are subject to change without notice. Hotchkis Performance is not responsible for printing errors.