



# PART # CM2699

## 2001 CHEVY HD CROSS MEMBER INSTALLATION INSTRUCTIONS



Rev. # 10-01

Please take the time to read these **INSTALLATION INSTRUCTIONS** and check the **Hardware Parts List** to be sure you have all the listed parts.

These installation instructions are prepared for the professional installer with the proper equipment, tools and experience in suspension systems and safety. This vehicle and its components are extremely heavy and can be dangerous without the proper equipment and experience.

Crossmember designed for Automatic Transmission.

**Hardware Parts List:**

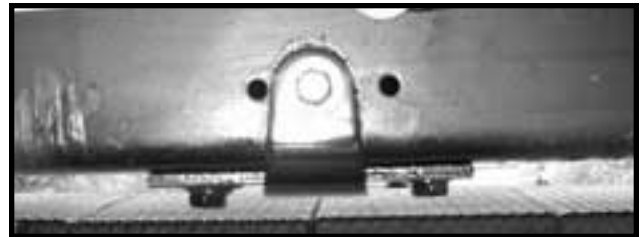
- 1- Cross Member
- 1- Trans Bracket

This part is used for ground clearance. Remove the factory cross member and replace using all the original hardware.

Use Trans bracket if needed.



This is the new part installed. It is very close to the bottom of the frame.



Here is a side view. Notice the factory clip.

Check out all the DJM products on the web [www.DJMSuspension.com](http://www.DJMSuspension.com)

**Tech Line (310) 538-1583**