



**PART # FK3098-3 & FK3098-5**

**1998-2010 FORD RANGER REAR FLIP KIT**

**INSTALLATION INSTRUCTIONS**

**NOTE: 2010-2012 RANGER WITH DISC BREAKS USES PART FK3010**

Please take the time to read these **INSTALLATION INSTRUCTIONS** and check the **Hardware Parts List** to be sure you have all the listed parts.

These installation instructions are prepared for the professional installer with the proper equipment, tools and experience in suspension systems and safety. This vehicle and its components are extremely heavy and can be dangerous without the proper equipment and experience.

Please read the warranty information (blue page enclosed). Complete your Product Warranty Card and mail it to DJM Suspension.

Please take a few minutes to fill out your installation helper (back side of warranty). Accurate measurements **BEFORE BEGINNING INSTALLATION** will show any irregularities in your vehicle.

**NEVER WORK UNDER TRUCK SUPPORTED BY A JACK ONLY !!!**  
**USE QUALITY JACK STANDS WHICH HAVE A RATING ADEQUATE FOR YOUR TRUCKS WEIGHT!!!**

New shocks are required.

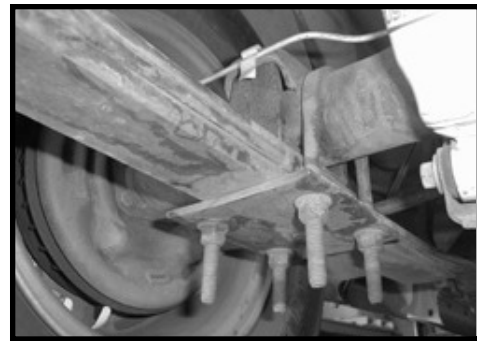
FK3098-3 Use DJM #TS1900 Driver side & TS2100 Passenger side.

FK3098-5 Use DJM #TS1800 Driver side & TS1900 Passenger side.

### **Hardware Parts List:**

#### **Axle Flip Kit**

- 2- Axle Locators(FK3001-4)
- 2- Spring Plates (3098-SP)
- 2- Urethane Bump Stops (10S)  
(FK3098-3 Only)
- 2- Urethane Bump Stops. (10R)
- 2- Rear Shackles.(SH1011-2)



For FK3098-3 only, replace factory shackles with DJM shackles.

Use the holes furthest from the bushing.

Remove factory bump stop and install new stop to frame in existing hole.

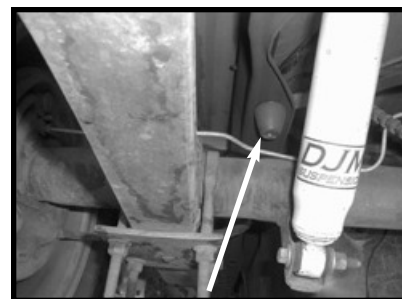


### **RELOCATING (FLIPPING) REAR AXLE+**

Reverse the leaf spring center bolt so the nut is on the bottom.

Place the new axle locator bracket on top of the spring, with the off center hole toward front of vehicle. This will center the rear axle and pull the drive shaft back from the transmission slightly.

Lower rear axle so the new axle supports fits up inside the existing rear axle pad welded to axle. Install factory U-bolts and spring plates (5 hole) on the bottom of the springs. Cross-torque U-bolts.



**Bump Stop Installed**