

Rev. # 8-02

PART # HS2397-5

1997-2002 DODGE DAKOTA REAR HANGER KIT

INSTALLATION INSTRUCTIONS

Please take the time to read these **INSTALLATION INSTRUCTIONS** and check the **Hardware Parts List** to be sure you have all the listed parts.

DJM parts should be installed by qualified mechanics. If you are not familiar with automotive repair, have the parts installed by someone with experience.

Please read the warranty information (blue page enclosed). Complete your **Product Warranty Card** and mail it to DJM Suspension.

Please take a few minutes to fill out your installation helper (back side of warranty). Accurate measurements **BEFORE BEGINNING INSTALLATION** will show any irregularities in your vehicle.

**NEVER WORK UNDER TRUCK SUPPORTED BY A JACK ONLY !!!
USE QUALITY JACK STANDS WHICH HAVE A RATING ADEQUATE
FOR YOUR TRUCKS WEIGHT!!!**

New rear shocks DJM #1900 are required.

Hardware Parts List:

- 2 - Spring Hangers
- 2 - Shackle Extenders
- 16 - 7/16" x 1-1/4" Bolts
- 16 - 7/16" Nuts
- 32 - Flat Washers
- 2 - Flat Bump Stops

This kit requires the removal of the factory spring hangers. These are riveted to the frame. Installer must have the knowledge, tools and facility to perform this installation.

Caution : Leaf springs are under considerable tension. Good judgment should be used when removing bolts. The rear spring may move causing a pinch point between the spring and the rear shackle. Be sure axle is well supported.

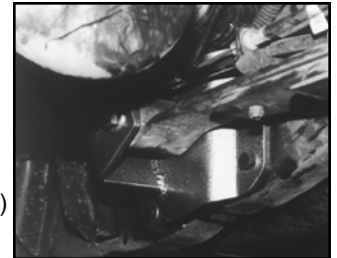
Work on one side at a time.

Remove the bolt attaching the spring to the front hanger. Keep all hardware.

Remove the rivets holding the hanger to the frame. A plasma cutter works the best. You could use a die grinder to cut an 'x' into the head of the rivet and an air chisel to remove them.

Bolt the new hanger to the frame. Attach leaf spring to the new hanger, and tighten nuts.

(Some installers find it easier to attach the spring to the hanger before bolting hanger to the frame.)



Use the same procedure for the shackle hanger. There is a left and right bracket. The shackle mounting holes are positioned a little to the rear on both sides. Do not over tighten shackle bolts. Over tightening may result in a stiff ride and inconsistent heights. Remove factory bump stop and bracket from frame. Mark centerline of axle and drill a 3/8" hole in the frame. Bolt the bump stop to the frame.

Install new rear shocks.

Take vehicle for test drive.

With the vehicle on ground measure height of the vehicle and record on installation helper. Your measurements should be about 5" less than the before measurement.



REMEMBER AFTER TEST DRIVING INSPECT INSTALLATION AND DOUBLE CHECK ALL THE HARDWARE IS TIGHT.

Check out all the DJM products on the web www.DJMSuspension.com

Tech Line (310) 538-1583