

Polaris 2013-20 Ranger Rear Panel

Thank you for choosing Rough Country for all your vehicle needs.

Please read instructions before beginning installation. Check the kit hardware against the kit contents shown below. Be sure you have all needed parts and know where they go.

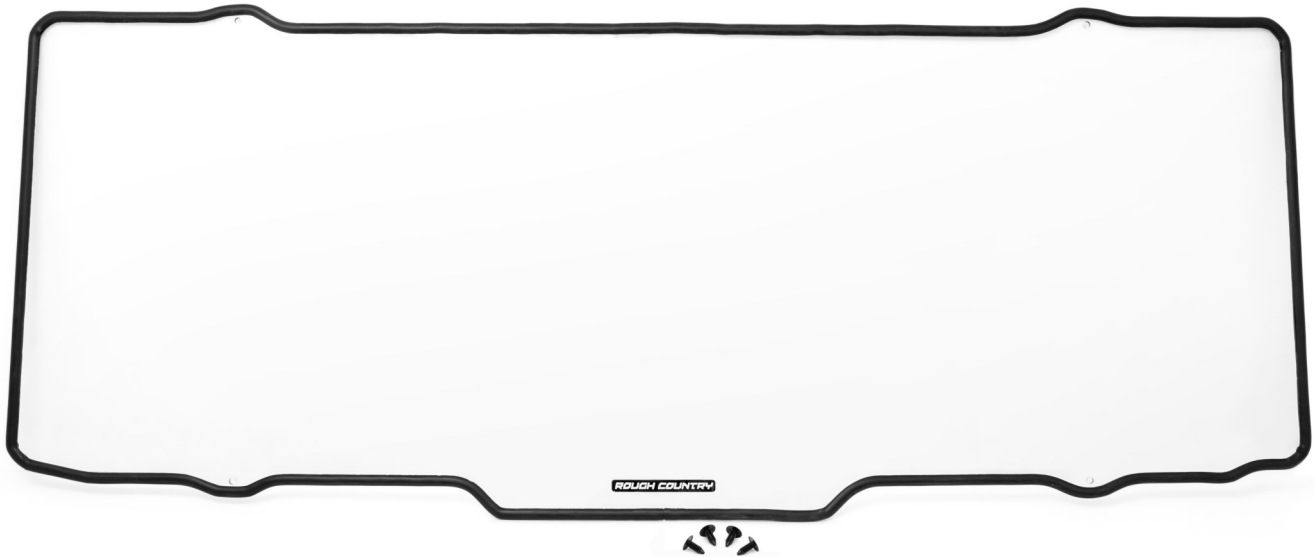
If question exist, please call us @1-800-222-7023. We will be happy to answer any questions concerning this product.

KIT CONTENTS:

Rear Panel x1

Seal x1

Plastic Retainer Pins x4



INSTALLATION INSTRUCTONS

1. Clean the surface of the UTV that the windshield will be applied to. **See Photo 1.**
2. Place the rubber seal around the window panel, starting in the center of the bottom of the panel and work around all sides. Make sure the seal is firmly pressed into all corners. **See Photo 2.**



Photo 1

Clean the rear window panel surface.



Photo 2

Install the rubber seal.

3. Trim any excess of the seal. **See Photo 3.**
4. Place the rear panel into the rear of the UTV. **See Photo 4.**



Photo 3

Install the rubber seal.



Photo 4

Install the rear panel into the UTV.

5. Insert the supplied retainer pins into through the 4 holes in the panel and into the factory holes on the UTV cage. **See Photo 5.**
6. Firmly press on each retainer pin to ensure the pin is fully seated and secure. **See Photo 6.**



Photo 5

Install the supplied straps.

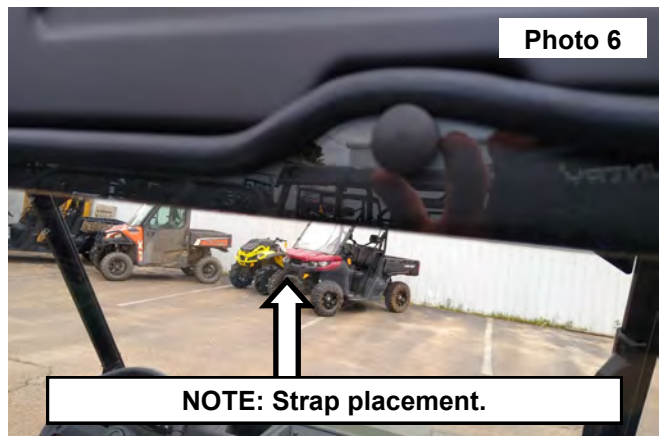


Photo 6

NOTE: Strap placement.

By purchasing any item sold by Rough Country, LLC, the buyer expressly warrants that he/she is in compliance with all applicable, State, and Local laws and regulations regarding the purchase, ownership, and use of the item. It shall be the buyers responsibility to comply with all Federal, State and Local laws governing the sales of any items listed, illustrated or sold. The buyer expressly agrees to indemnify and hold harmless Rough Country, LLC for all claims resulting directly or indirectly from the purchase, ownership, or use of the items.

