

921107840

ROUGH COUNTRY

SUSPENSION SYSTEMS®

FORD 99-16 F-250 REAR BUMPER

Thank you for choosing Rough Country for all your vehicle needs.

Please read instructions before beginning installation. Check the kit hardware against the kit contents shown below. Be sure you have all needed parts and know where they go.

If question exist, please call us @1-800-222-7023. We will be happy to answer any questions concerning this product. Check all fasteners for proper torque. Check to ensure for adequate clearance between all components.

Periodically check all hardware for tightness.

KIT CONTENTS:

- 1-Rear Bumper
- 2-Hitch Spacers

TOOLS NEEDED:

- 15mm wrench or socket
- 19mm wrench and socket
- 22mm wrench and socket
- Ratchet
- 2.5 Allen Wrench

HARDWARE INCLUDED:

- 8-4mm x 10mm Button Screws
- 4-Rubber Plugs
- 4-Plastic Retainers
- 4- Wire Ties



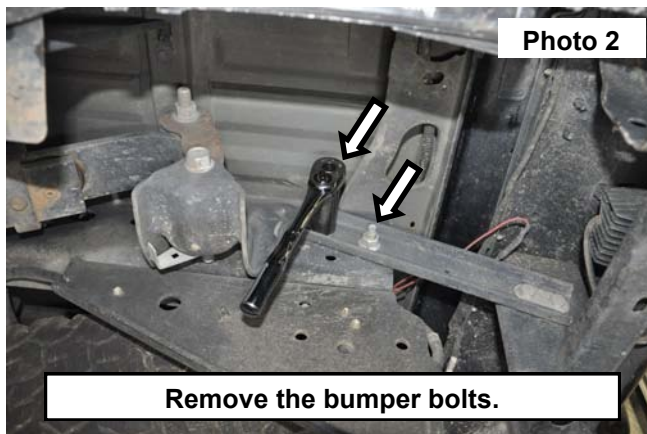
Torque Specs:

Size	Grade 5	Grade 8	Size	Class 8.8	Class 10.9
5/16"	15 ft/lbs	20ft/lbs	6MM	5ft/lbs	9ft/lbs
3/8"	30 ft/lbs	35ft/lbs	8MM	18ft/lbs	23ft/lbs
7/16"	45 ft/lbs	60ft/lbs	10MM	32ft/lbs	45ft/lbs
1/2"	65 ft/lbs	90ft/lbs	12MM	55ft/lbs	75ft/lbs
9/16"	95 ft/lbs	130ft/lbs	14MM	85ft/lbs	120ft/lbs
5/8"	135ft/lbs	175ft/lbs	16MM	130ft/lbs	165ft/lbs
3/4"	185ft/lbs	280ft/lbs	18MM	170ft/lbs	240ft/lbs

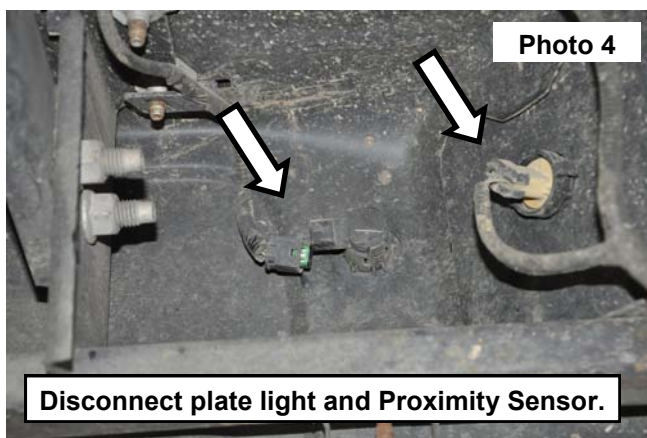


INSTALLATION INSTRUCTIONS

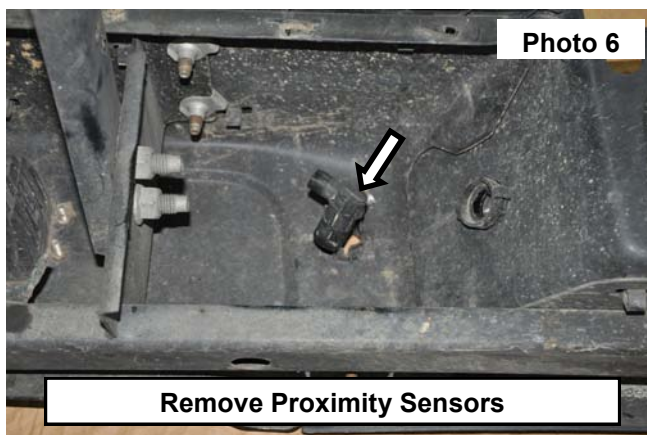
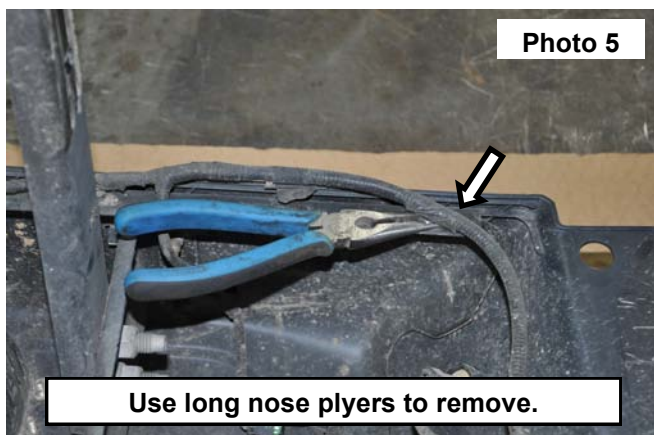
1. Disconnect the rear license plate light and proximity sensor wiring harness. **See Photo 1.**
2. Remove the 2 bumper bolts on each side of the frame using a 21mm socket. Retain for reuse. **See Photo 2.**



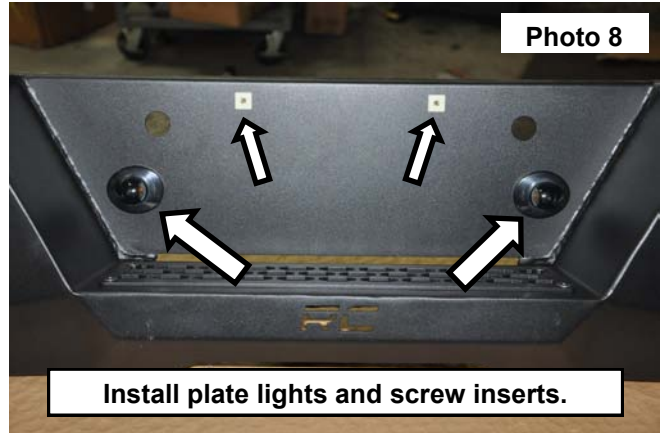
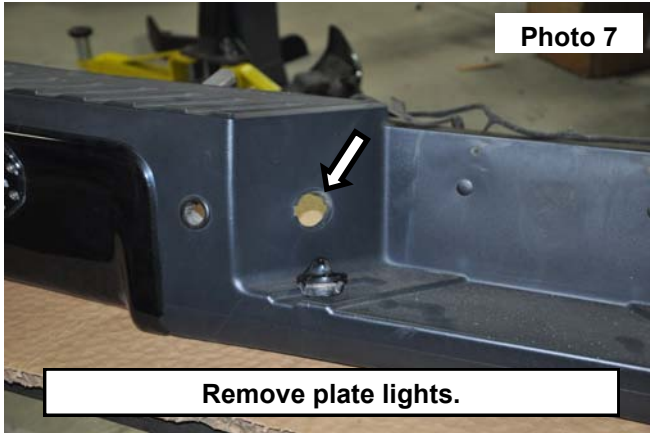
3. Remove the stock rear bumper from the truck and set in a safe place. **See Photo 3.**
4. Disconnect the proximity sensor and license plate wiring harness. **See Photo 4.**



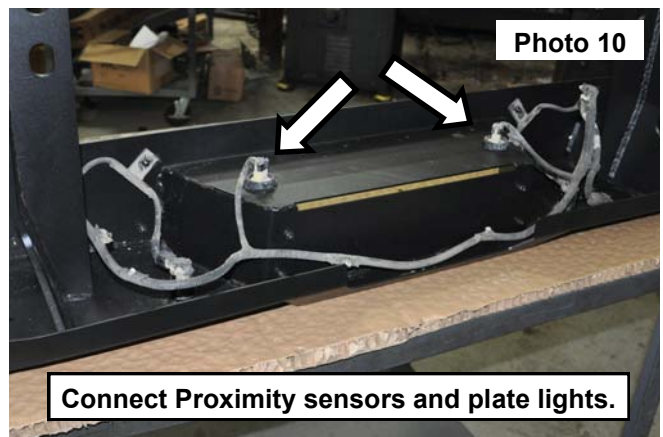
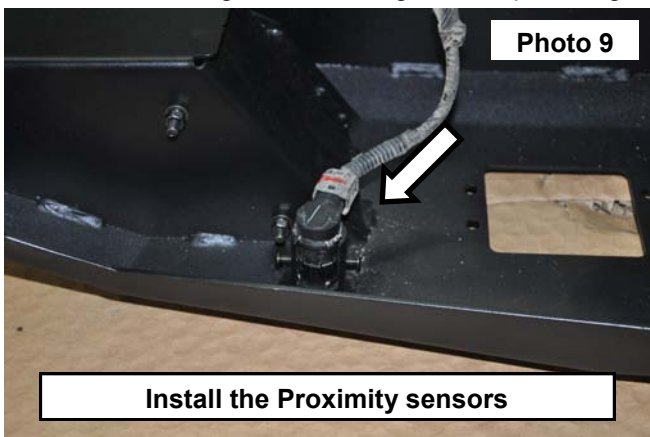
5. Remove the push pins securing the wiring harness to the bumper. **See Photo 5.**
6. Remove the proximity sensors from the OE location in the bumper. Retain for reuse. **See Photo 6.**



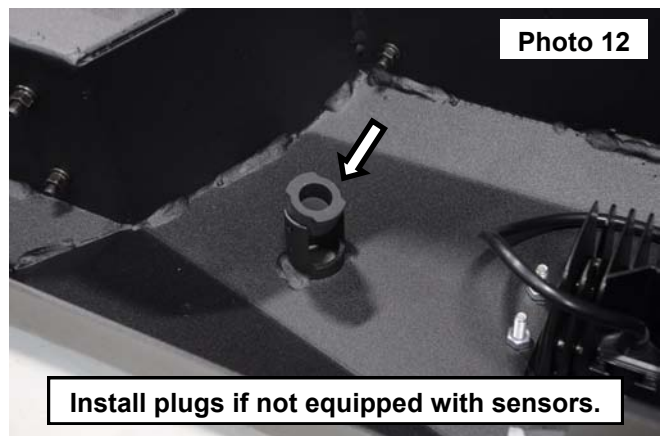
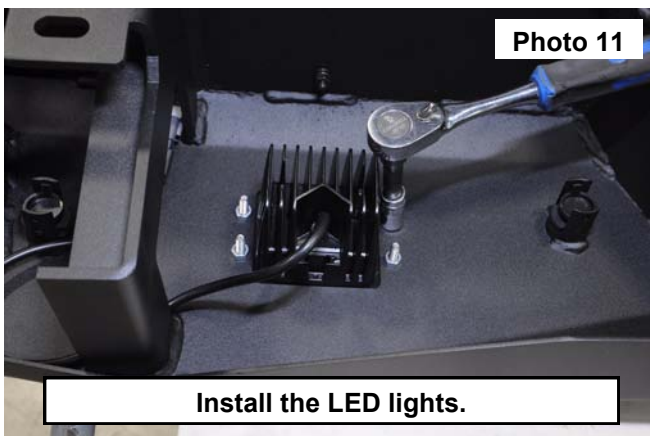
7. Remove the license plate light from each side of the bumper. **See Photo 7.**
8. Install the license plate light into the rough country bumper and install the license plate screw inserts into the top of the bumper. **See Photo 8.**



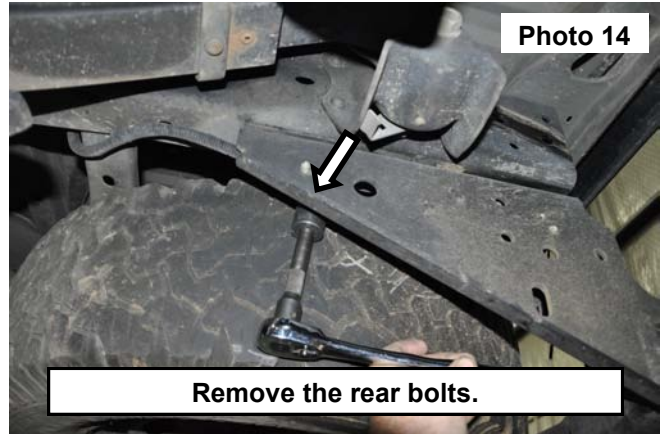
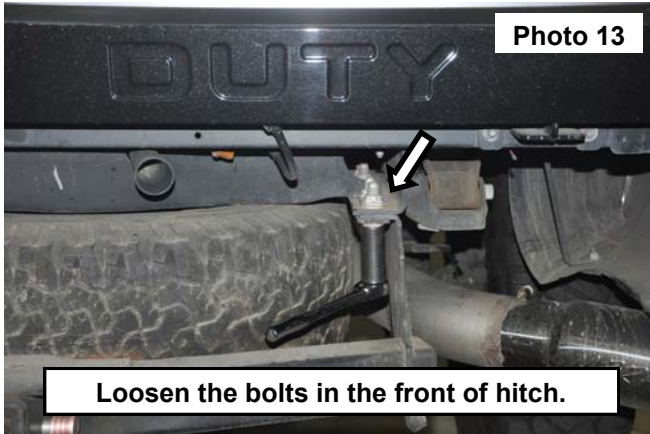
9. If factory equipped, install the proximity sensors into the new bumper. Secure using the supplied 4mm screws to secure into the bumper. Tighten using a 2.5 allen wrench. **See Photo 9. NOTE: Do not damage the sensor's by over tighten them.**
10. Connect the proximity sensor's to harness and reconnect the license plate lights to wiring harness. **See Photo 10.** Secure the wiring harness along the bumper using the supplied wire ties.



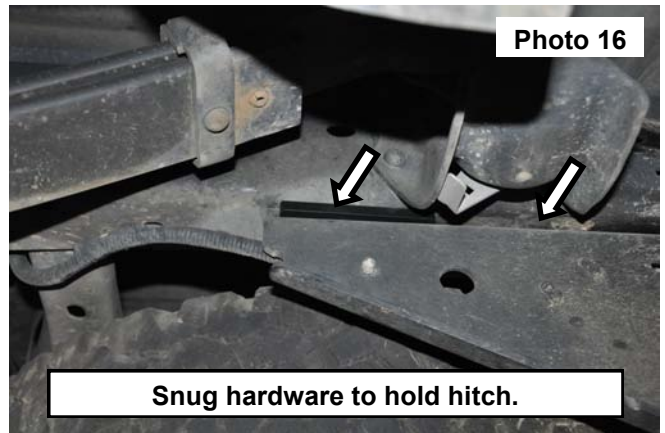
11. Install the flush mount LED lights into the bumper. Use the corresponding instruction sheets and hardware supplied with that kit. **See Photo 11.**
12. If the vehicle is not equipped with the proximity sensors install the supplied plugs and plastic retainers into the bumper. **See Photo 12.**



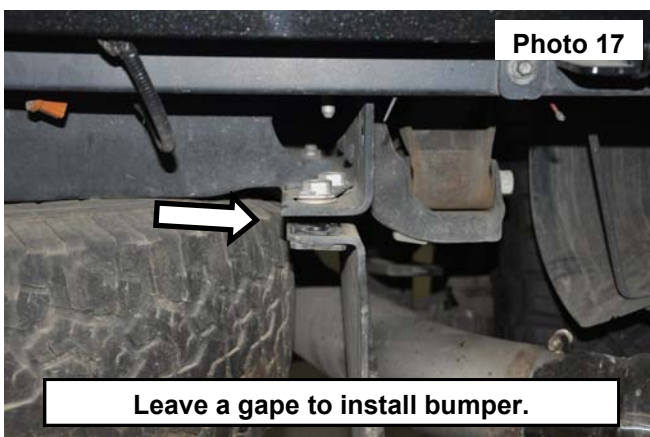
- Loosen the bolts in the front to the hitch on the driver and passengers side using a 21mm socket. **See Photo 13.**
- Remove the rear bolts in the hitch on the driver and passengers side using a 21mm socket. **See Photo 14.** Save for reuse.



- Install the spacer shim on each side in between the frame and the hitch on the driver and passengers side. **See Photo 15.**
- Install the removed bolts back into the hitch and spacer. Snug these bolts down allowing space for the bumper to be installed. **See Photo 16.**

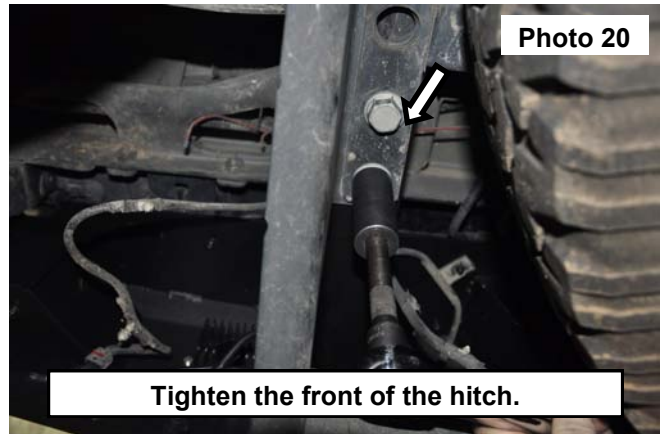
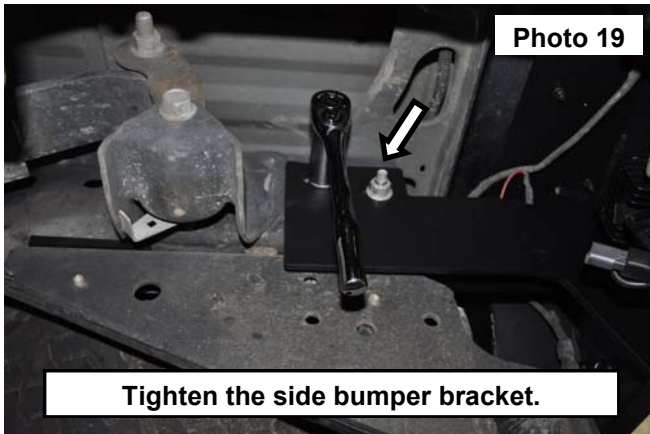


- Remove the bolts in the front of the hitch on the driver and passengers side. Save for reuse. **See Photo 17.** Make sure there is room to slide the bumper mount in between the frame and the hitch.
- Install the bumper into the frame and the hitch. Secure the bumper to the frame using the factory hardware. **See Photo 18.**



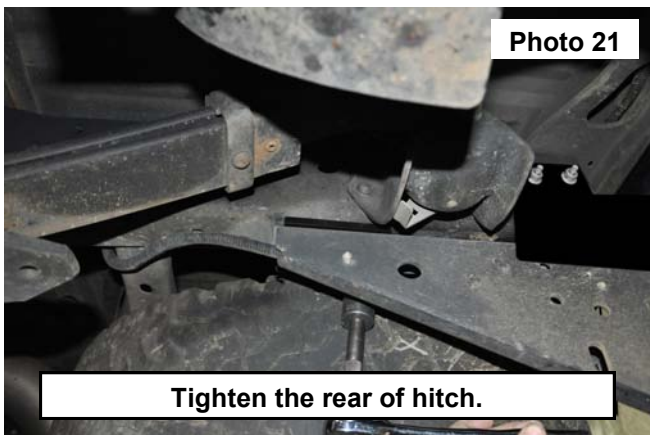
19. Install the OE hardware into the Rough Country bumper and frame. Torque to 85 ft-lbs using a 21mm socket. **See Photo 19.**

20. Torque the front bolts in the hitch to 85ft-lbs using a 21mm socket. **See Photo 20.**



21. Torque the rear bolts in the hitch to 85ft-lbs using a 21mm socket. **See Photo 21.**

22. Reconnect the rear license plate light and proximity sensor wiring harness. **See Photo 22.**



By purchasing any item sold by Rough Country, LLC, the buyer expressly warrants that he/she is in compliance with all applicable , State, and Local laws and regulations regarding the purchase, ownership, and use of the item. It shall be the buyers responsibility to comply with all Federal, State and Local laws governing the sales of any items listed, illustrated or sold. The buyer expressly agrees to indemnify and hold harmless Rough Country, LLC for all claims resulting directly or indirectly from the purchase, ownership, or use of the items.

