

## POLARIS 2014-19 RZR 1000 Dual 10" Slim Line LED Grille Mount

Thank you for choosing Rough Country for all your vehicle needs.

Please read instructions before beginning installation. Check the kit hardware against the kit contents shown below. Be sure you have all needed parts and know where they go.

If question exist, please call us @1-800-222-7023. We will be happy to answer any questions concerning this product.

Check all fasteners for proper torque. Check to ensure for adequate clearance between all components.

Periodically check all hardware for tightness.

### KIT CONTENTS:

Dual 12" Single Row LED Light Kit x1  
 Driver Side Bumper Bracket x1  
 Pass Side Bumper Bracket x1

### TOOLS NEEDED:

3/16 Allen Wrench  
 7/16 Wrench or Socket

### HARDWARE INCLUDED:

1/4-20 x 3/4 Button Head Bolts x4  
 1/4" Flat Washers x4  
 1/4-20 Nylock Nuts x4



### Torque Specs:

Size	Grade 5	Grade 8	Size	Class 8.8	Class 10.9
5/16"	15 ft/lbs	20ft/lbs	6MM	5ft/lbs	9ft/lbs
3/8"	30 ft/lbs	35ft/lbs	8MM	18ft/lbs	23ft/lbs
7/16"	45 ft/lbs	60ft/lbs	10MM	32ft/lbs	45ft/lbs
1/2"	65 ft/lbs	90ft/lbs	12MM	55ft/lbs	75ft/lbs
9/16"	95 ft/lbs	130ft/lbs	14MM	85ft/lbs	120ft/lbs
5/8"	135ft/lbs	175ft/lbs	16MM	130ft/lbs	165ft/lbs
3/4"	185ft/lbs	280ft/lbs	18MM	170ft/lbs	240ft/lbs

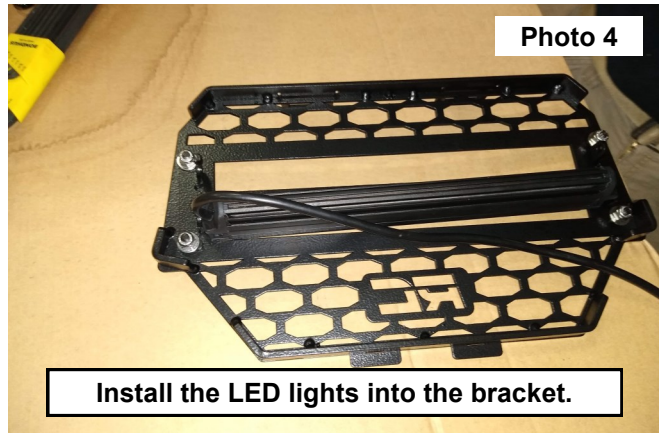
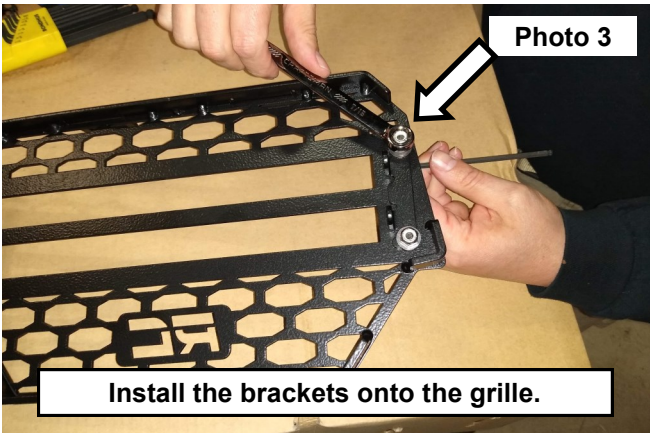


## INSTALLATION INSTRUCTIONS

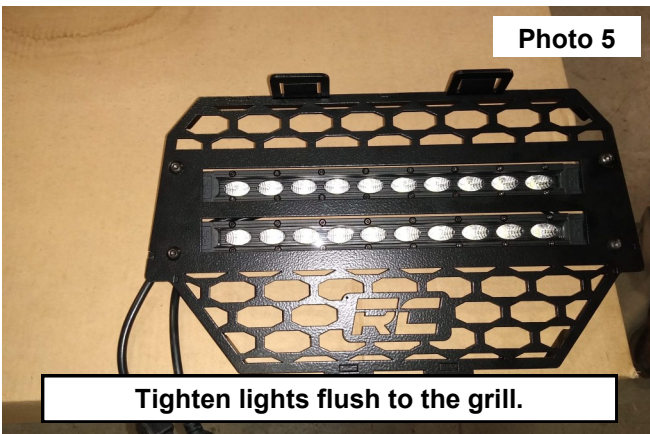
1. Locate the 2 tabs on the front of the grille. **See Photo 1.**
2. Press the tabs down unlocking the grille and pull forward and remove the grille. **See Photo 2.**



3. Install the (2) light brackets onto the grille with the light mounting tabs to the inside of the grille. Secure the brackets to the grille using (4) of the supplied 1/4-20 x 3/4 button head bolts, (2) 1/4" washers and (4) 1/4-20 nylock nuts. Tighten using a 3/16" allen wrench and a 7/16" wrench. **See Photo 3.**
4. Install the (2) 12" LED lights into the grill. **NOTE: The slots in the light brackets can be adjusted to fit the light.** Secure the lights into the brackets using the supplied hardware in the LED light kit. **See Photo 4.**



5. Install the lights flush with the grille. Tighten using the supplied allen wrench. **See Photo 5.**
6. Connect the wiring harness to the UTV.
7. Connect the lights to the wiring harness. Then install the grill into the UTV grille opening and snap into the OE location. **See Photo 6.**
8. If needed Remove grille and adjust the lights to the desired angle.



By purchasing any item sold by Rough Country, LLC, the buyer expressly warrants that he/she is in compliance with all applicable, State, and Local laws and regulations regarding the purchase, ownership, and use of the item. It shall be the buyers responsibility to comply with all Federal, State and Local laws governing the sales of any items listed, illustrated or sold. The buyer expressly agrees to indemnify and hold harmless Rough Country, LLC for all claims resulting directly or indirectly from the purchase, ownership, or use of the items.

