



## GM 99-14 PLUS 1 DEGREE CAM WASHERS

Thank you for choosing Rough Country for all your suspension needs.

Rough Country recommends a certified technician install this system. In addition to these instructions, professional knowledge of disassemble/reassembly procedures as well as post installation checks must be known. Attempts to install this system without this knowledge and expertise may jeopardize the integrity and/or operating safety of the vehicle.

Please read instructions before beginning installation. Check the kit hardware against the kit contents list on the back page. Be sure you have all needed parts and know where they go. Also please review tools needed list and make sure you have the tools needed to install the kit.

### PRODUCT USE INFORMATION

This kit was designed to add an additional 1 degree of alignment adjustment for any 1999 to 2014 GM 1500 trucks.

### NOTICE TO DEALER AND VEHICLE OWNER

INSTALLING DEALER / OWNER - It is your responsibility to install the warning decal and forward these installation instructions on to the vehicle owner for review. These instructions should be kept in the vehicle for its service life.

### Tools Needed:

21 mm Socket/Wrench  
Grinder  
Die grinder  
Carbide cutting tool  
Floor Jack  
Jack Stands

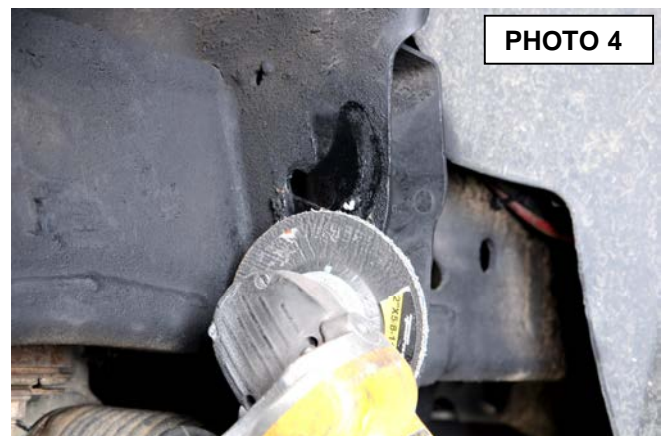


## INSTALLATION INSTRUCTIONS

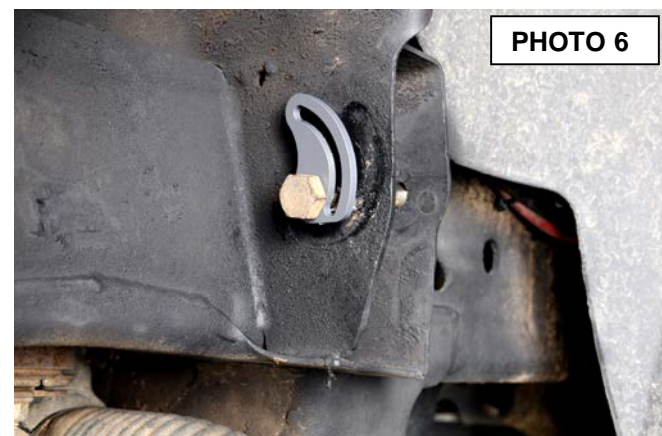
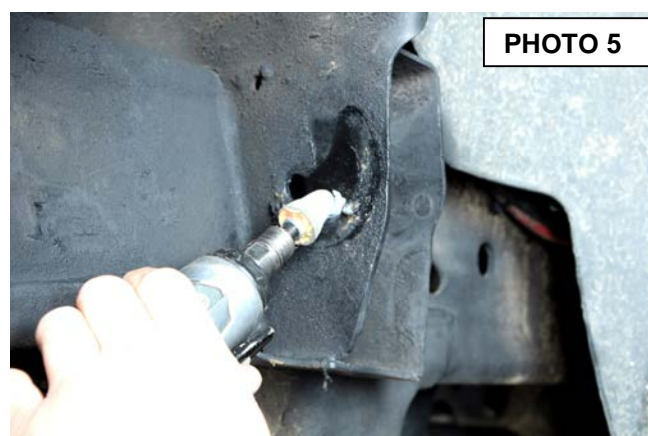
1. Lift the front of the vehicle using a jack and support the vehicle with jack stands, so that the front wheels are off the ground. Remove the front tires and wheels.



2. Using a 21mm socket and wrench remove the factory upper control arm bolts. Remove the factory cam plate as shown in **Photo 1**. Insert the new cam plate onto the bolt as shown in **Photo 2**.



3. Pull the control arm down out of the way. Insert the bolt and cam washer into the control arm pocket and mark the guide pin so it can be ground flush with the alignment plate. **See Photo 2 & 3**.



4. Next grind 3/16+ out of the end of the factory slot for the cam bolt closed to the guide pin. This will allow more travel of the cam bolt with the new cam plate. **See Photo 5 & 6**. Repeat these steps on the other cam slots and guide pins.
5. Install the upper control arms in stock locations and tighten control arm bolts with the new cam plates installed.
6. Install the tires and wheels and remove the jack stands.
7. A new alignment is required after installing the cam plates.