

**ROUGH COUNTRY**  
SUSPENSION SYSTEMS®

921100030



**10003BAG**

## GM 2011-16 2500 DEF Skid Plate

Thank you for choosing Rough Country for all your vehicle needs.

Please read instructions before beginning installation. Check the kit hardware against the kit contents shown below. Be sure you have all needed parts and know where they go.

If question exist, please call us @1-800-222-7023. We will be happy to answer any questions concerning this product.

Check all fasteners for proper torque. Check to ensure for adequate clearance between all components.

Periodically check all hardware for tightness.

### KIT CONTENTS:

DEF Skid Plate x 1

Front DEF Skid Plate Bracket x 1

### TOOLS NEEDED:

Wheel Chocks

Torque Wrench

13mm Socket and Wrench

9/16 Socket and Wrench

Paint Pen

Center Punch

.406 Drill

Drill Motor

Color Match Paint for

Chassis

### HARDWARE INCLUDED:

3/8-16 Hex Head Bolts x 5

3/8 Flat Washer x 10

3/8-16 Nylock Nuts x 5



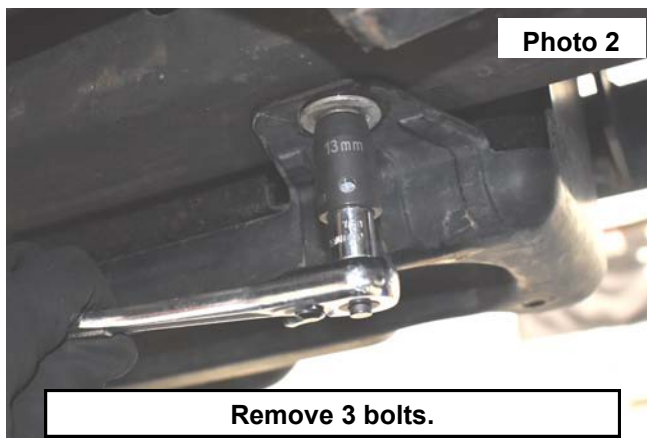
### Torque Specs:

Size	Grade 5	Grade 8	Size	Class 8.8	Class 10.9
5/16"	15 ft/lbs	20ft/lbs	6MM	5ft/lbs	9ft/lbs
3/8"	30 ft/lbs	35ft/lbs	8MM	18ft/lbs	23ft/lbs
7/16"	45 ft/lbs	60ft/lbs	10MM	32ft/lbs	45ft/lbs
1/2"	65 ft/lbs	90ft/lbs	12MM	55ft/lbs	75ft/lbs
9/16"	95 ft/lbs	130ft/lbs	14MM	85ft/lbs	120ft/lbs
5/8"	135ft/lbs	175ft/lbs	16MM	130ft/lbs	165ft/lbs
3/4"	185ft/lbs	280ft/lbs	18MM	170ft/lbs	240ft/lbs

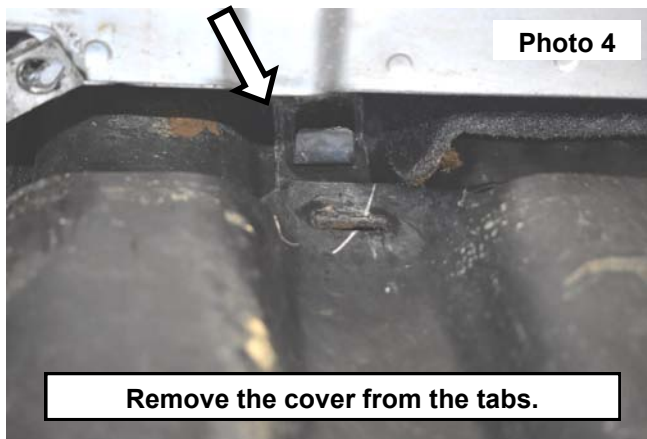
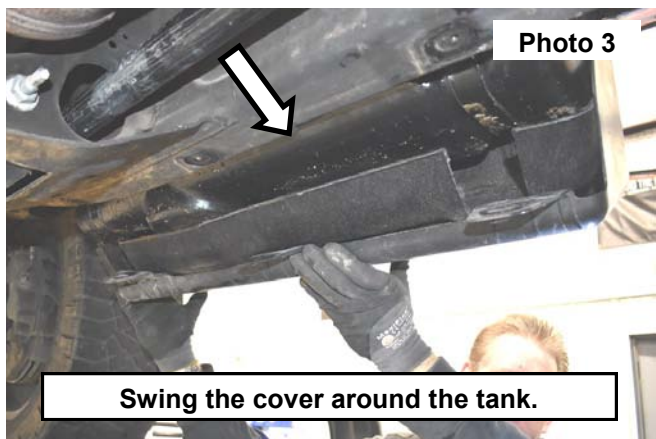


## INSTALLATION INSTRUCTIONS

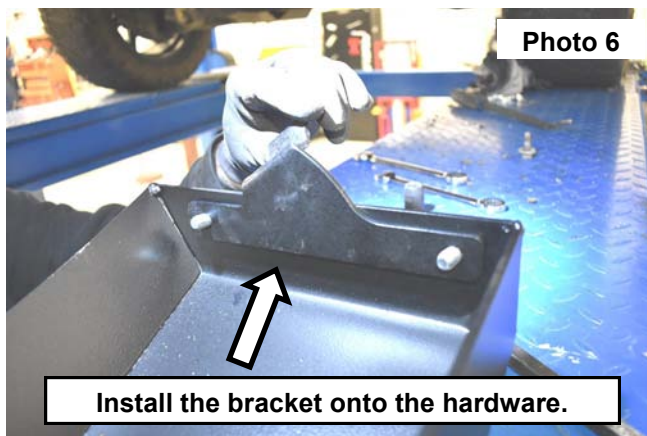
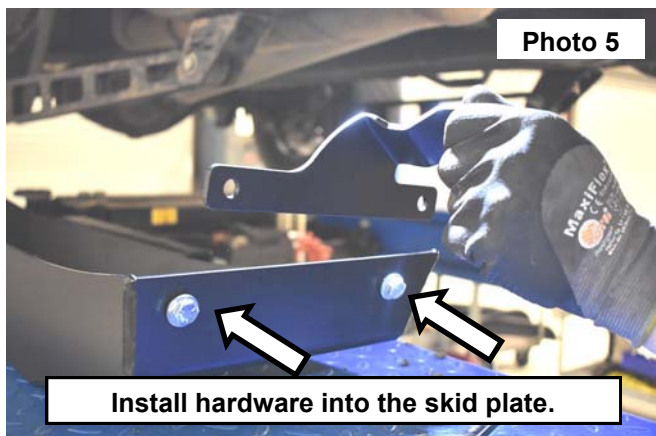
1. Make sure the vehicle is turned off and in park. Place the wheel chocks behind the rear wheels.
2. Locate the 3 bolts mounting the plastic DEF tank cover to the frame. **See Photo 1.**
3. Remove the 3 bolts using a 13mm socket, save hardware for reuse. **See Photo 2.**



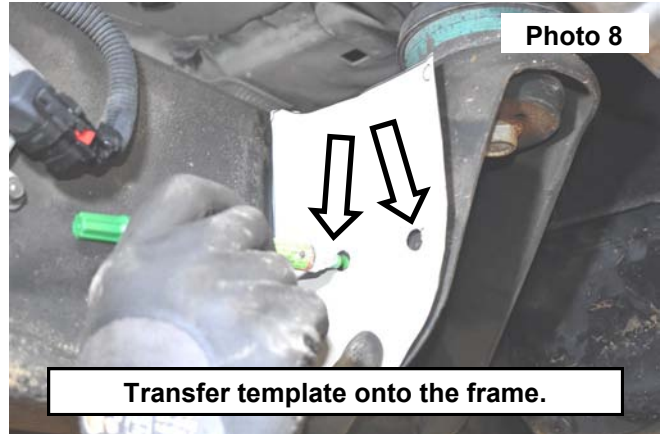
4. Swing the DEF tank cover down and around the DEF tank. **See Photo 3.**
5. Lift the DEF cover up and over the tabs on the outside of the tank. Then remove the DEF cover and set a side this will not be reused. **See Photo 4.**



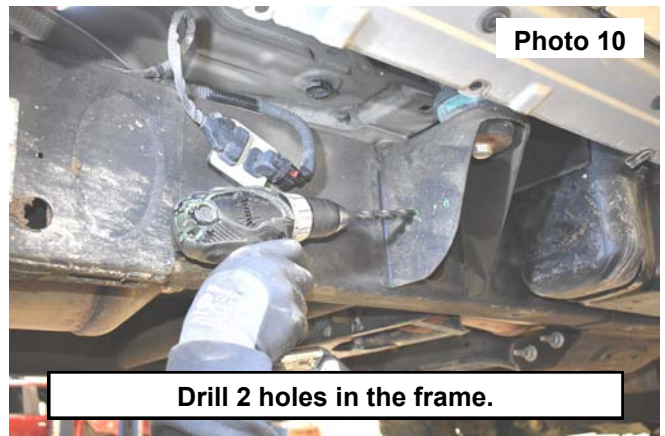
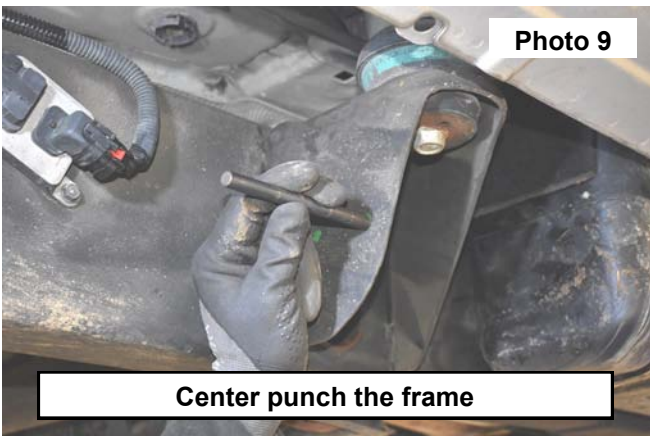
6. Insert the supplied (2) 3/8-16 x 1.250 bolts and 3/8 washers into the new DEF skid plate. **See Photo 5.**
7. Install the skid plate bracket onto the inside of the skid plate securing with the supplied 3/8 flat washers and 3/8 nylock nuts. **See Photo 6.**



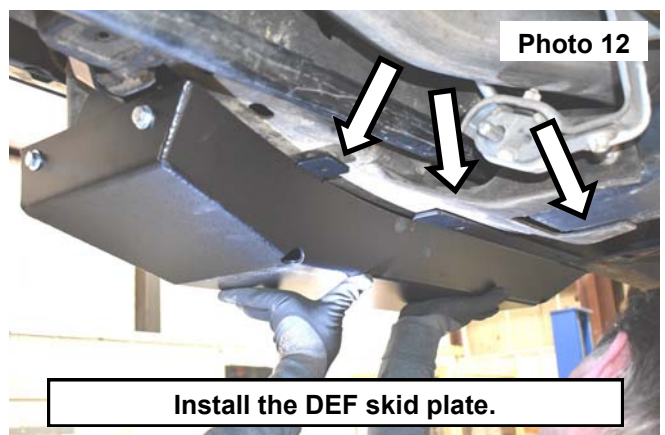
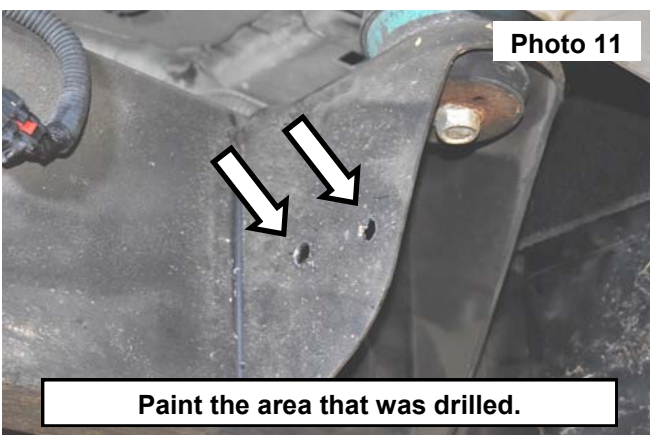
8. Torque the installed hardware to 30 ft-lbs. using a 9/16 socket and wrench. **See Photo 7.**
9. Transfer the 2 holes in the template onto the frame using a paint pen. **See Photo 8.**



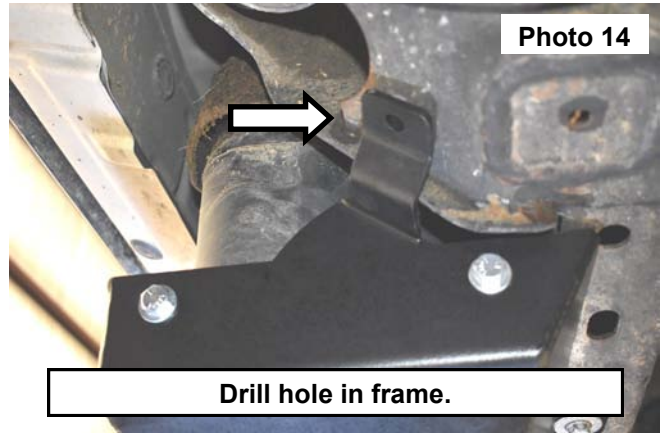
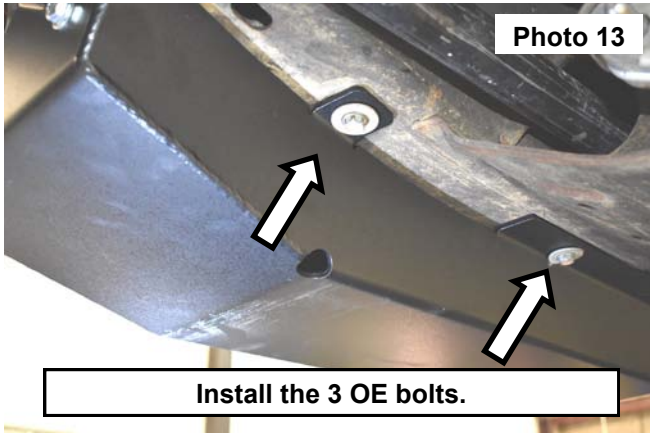
10. Use a center punch to set the center of the holes to drill. **See Photo 9.**
11. Drill the marked holes into the frame using a .406 drill bit and a drill motor. **See Photo 10.**



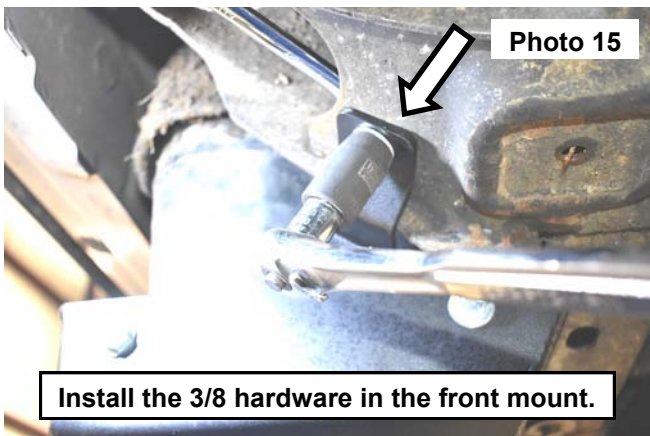
12. Apply paint to the area that was drilled to prevent rusting. **See Photo 11.**
13. Install the new DEF skid plate onto the vehicle. **See Photo 12.**



14. Install the 3 OE bolts in the new DEF skid plate using the 3 retained bolts into the frame. Tighten using a 13mm socket. **See Photo 13.**
15. Using the hole in the skid plate for a template drill through the frame to mount the front of the new DEF skid plate onto the frame use a 0.406 drill bit. **See Photo 14.**



16. Install into the DEF skid and the frame (1) of the 3/8-16 x 1.25 hex head bolts (2) 3/8 flat washers and (1) 3/8 nylock nut. Torque to 30 ft-lbs. using a 9/16 socket and wrench. **See Photo 15.**
17. Install 2 of the 3/8-16 x 1.250 bolts in the rear of the DEF skid plate. Torque to 30 ft-lbs. using a 9/16 socket and wrench. **See Photo 16.**



By purchasing any item sold by Rough Country, LLC, the buyer expressly warrants that he/she is in compliance with all applicable , State, and Local laws and regulations regarding the purchase, ownership, and use of the item. It shall be the buyers responsibility to comply with all Federal, State and Local laws governing the sales of any items listed, illustrated or sold. The buyer expressly agrees to indemnify and hold harmless Rough Country, LLC for all claims resulting directly or indirectly from the purchase, ownership, or use of the items.



# TO FRAME

