

# ROUGH COUNTRY

## SUSPENSION SYSTEMS®

### JEEP 2019-20 JL Rear Tube Bumper

Thank you for choosing Rough Country for all your vehicle needs.

Please read instructions before beginning installation. Check the kit hardware against the kit contents shown below. Be sure you have all needed parts and know where they go.

If question exist, please call us @1-800-222-7023. We will be happy to answer any questions concerning this product.

Check all fasteners for proper torque. Check to ensure for adequate clearance between all components.

Periodically check all hardware for tightness.

#### KIT CONTENTS:

2" Flush Mount LED Light Kit x1  
 Pass Side Double Nut Plate x1  
 Bumper x1  
 D-rings x2  
 License Plate Mount x1  
 Sensor Bumper Mounts x4

#### TOOLS NEEDED:

13mm Socket  
 16mm Socket  
 21mm Wrench and Socket  
 Pry Tool  
 Phillips Screw Driver  
 Flat Head Screw Driver  
 6mm Allen Wrench

#### HARDWARE INCLUDED:

8mm x 25mm Button Head Bolts x2  
 8mm Flat Washers x4  
 8mm Lock Nuts x2  
 14mm x 40mm Hex Head Bolts x2  
 14mm Lock Washers x2  
 14mm Flat Washers x2



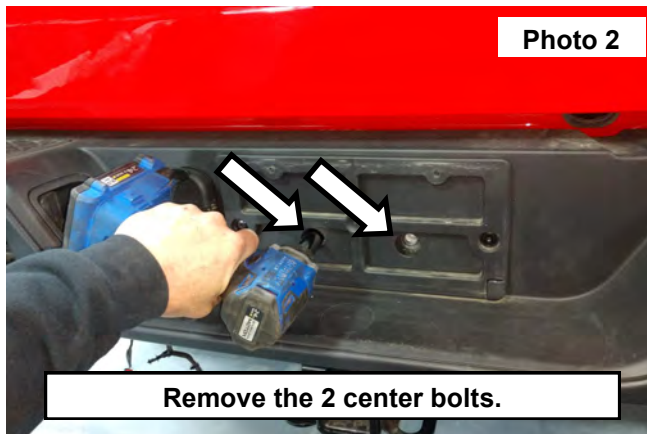
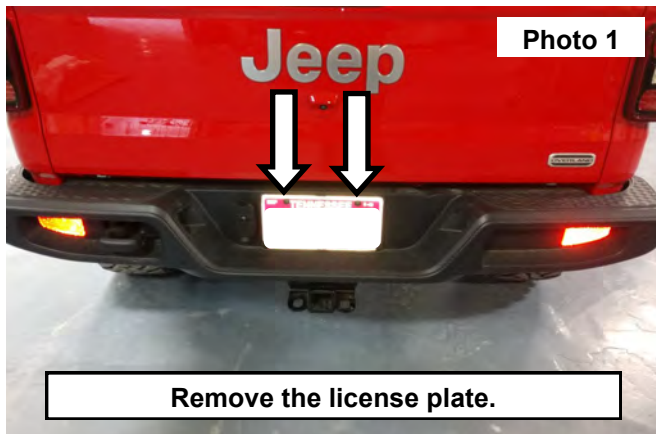
#### Torque Specs:

Size	Grade 5	Grade 8	Size	Class 8.8	Class 10.9
5/16"	15 ft/lbs	20ft/lbs	6MM	5ft/lbs	9ft/lbs
3/8"	30 ft/lbs	35ft/lbs	8MM	18ft/lbs	23ft/lbs
7/16"	45 ft/lbs	60ft/lbs	10MM	32ft/lbs	45ft/lbs
1/2"	65 ft/lbs	90ft/lbs	12MM	55ft/lbs	75ft/lbs
9/16"	95 ft/lbs	130ft/lbs	14MM	85ft/lbs	120ft/lbs
5/8"	135ft/lbs	175ft/lbs	16MM	130ft/lbs	165ft/lbs
3/4"	185ft/lbs	280ft/lbs	18MM	170ft/lbs	240ft/lbs

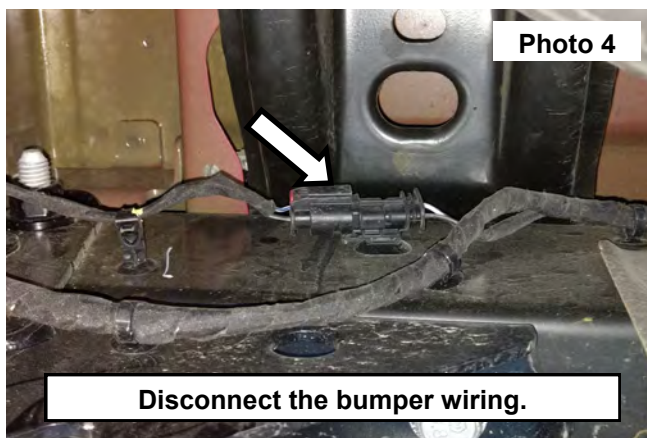


## INSTALLATION INSTRUCTIONS

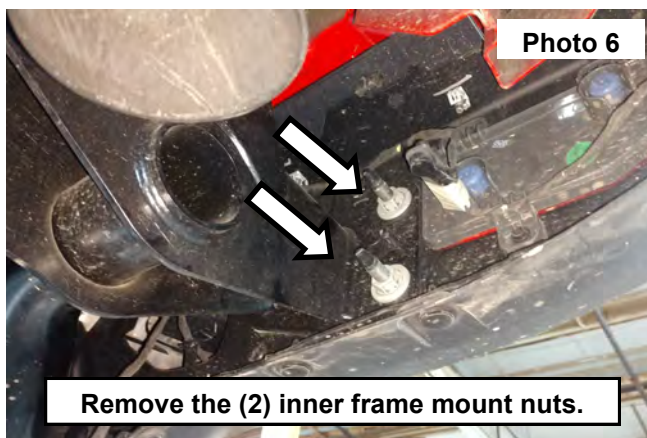
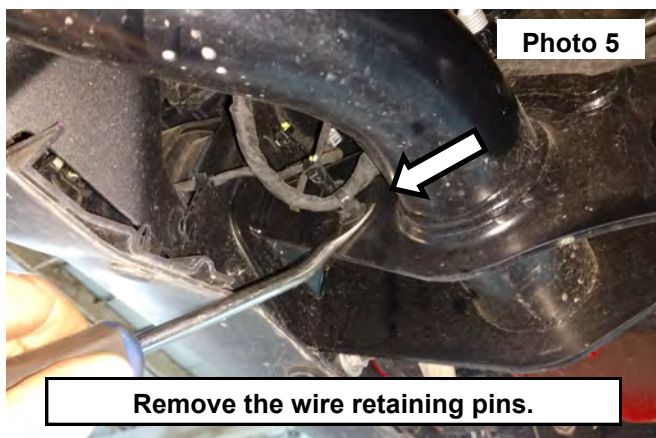
1. Remove the (2) license plate screws using a Phillips screw driver. **See Photo 1.**
2. Remove the (2) bolts in the center of the bumper using a 16mm socket. **See Photo 2.**



3. Disconnect the trailer light wiring harness from the bumper plug. **See Photo 3.**
4. Disconnect the sensor and license plate wiring from the frame plug. **See Photo 4.**

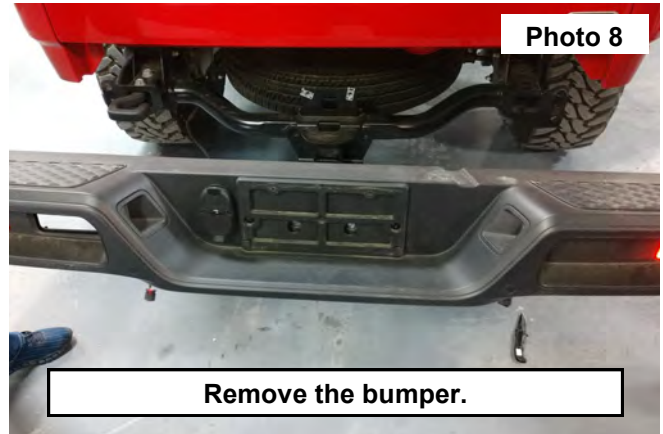
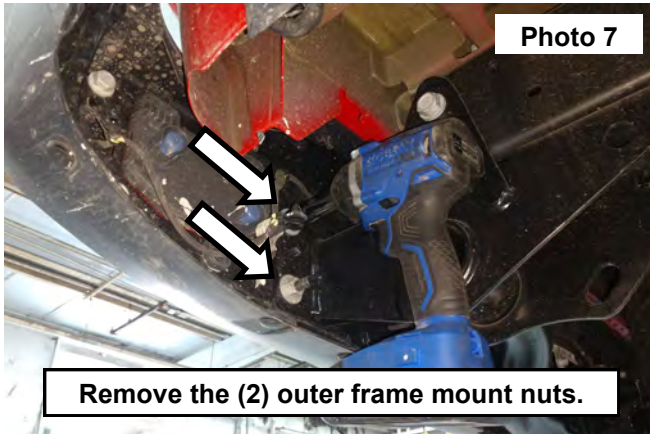


5. Use a pry tool to remove the wire retaining pins from the bumper. **See Photo 5.**
6. Support the bumper. Do not get under an unsupported bumper.
7. Remove the (2) outer frame mount nuts on the drivers side using a 16mm socket. **See Photo 6.**

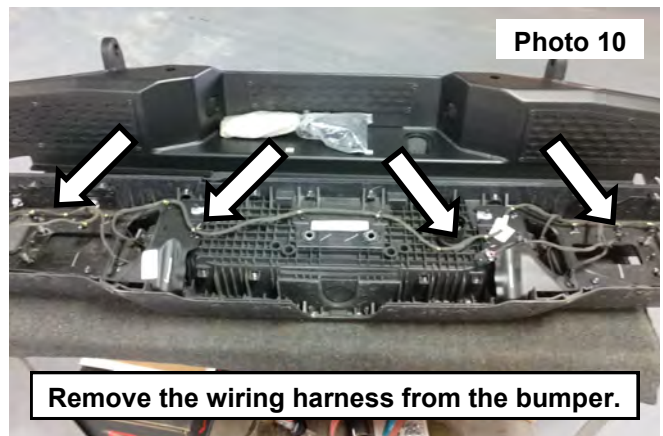
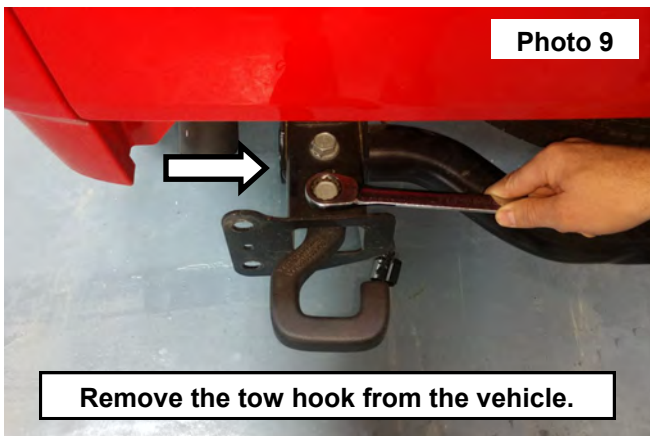




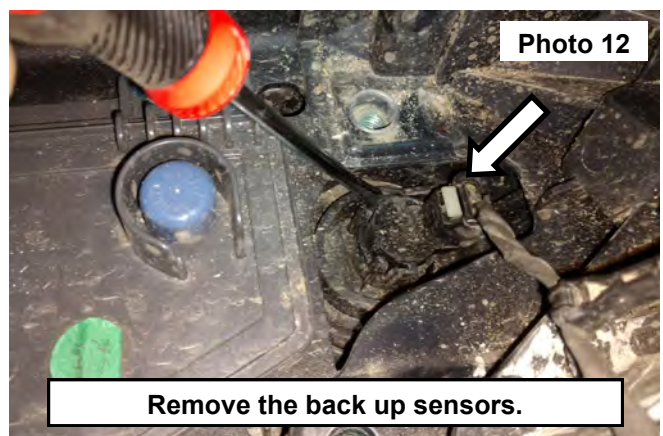
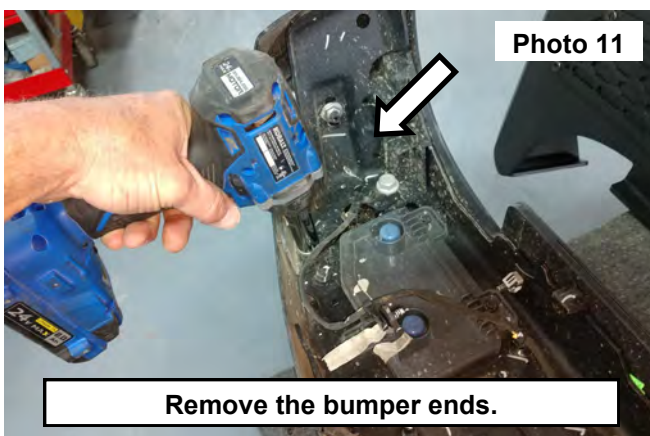
- Remove the (2) outer frame mount nuts on the passengers side using a 16mm socket. **See Photo 7.**
- Remove the bumper, Place it in a safe location for continued disassembly. **See Photo 8.**



- Using a 21mm wrench, remove the tow hook from the frame mount. Retain the stock hardware for reuse. **See Photo 9.**
- Unclip the wiring harness from the back up sensors and the license plate lights. Then remove the wiring harness from the bumper. **See Photo 10.**



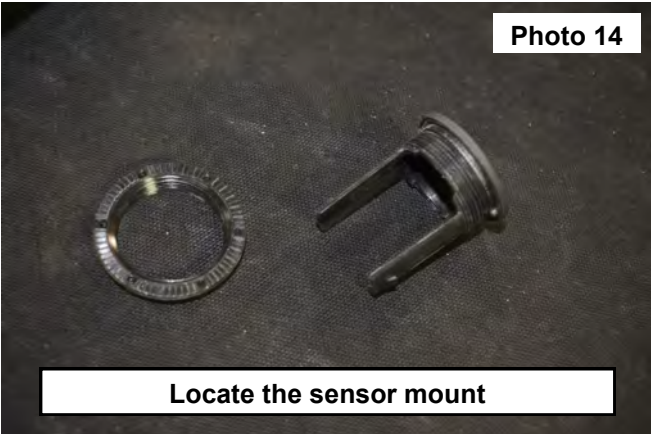
- Using a 13mm socket remove the (3) nuts on the ends of the bumper. Then remove the metal guard from both sides of the bumper. **See Photo 11.**
- Using a flat head screw driver unclip and remove all back up sensors from the bumper. **See Photo 12.**



14. Use a flat pry tool to remove the trailer light plug from the bumper. **See Photo 13.**  
 15. Locate the (4) sensor mounts and install into the bumper. Then thread the nut onto the sensor mount to secure. **See Photo 14.**

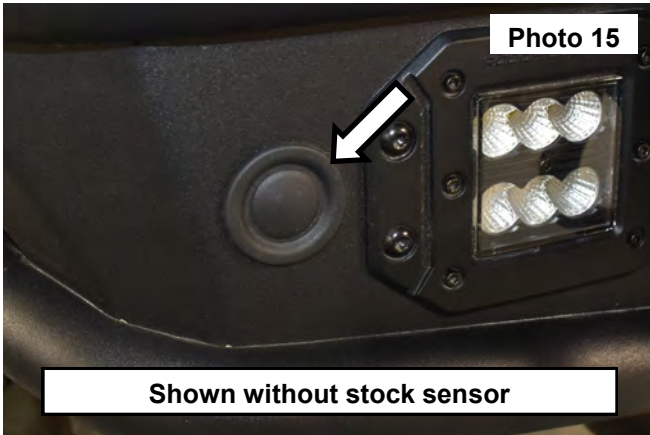


**Remove the trailer light plug.**



**Locate the sensor mount**

16. If not equipped with OE back up sensors the sensor mount center cap will remain installed. **See Photo 15.**  
 17. If equipped with OE sensors. Install the (4) OE sensors into the sensor mounts on the bumper. Then install the wiring harness to the bumper and connect to the sensors. For reference, **Photo 16** shows the stock sensor installed in the mount. **The sensor mount will need to be installed in the bumper before the sensor is installed in the mount.**



**Shown without stock sensor**

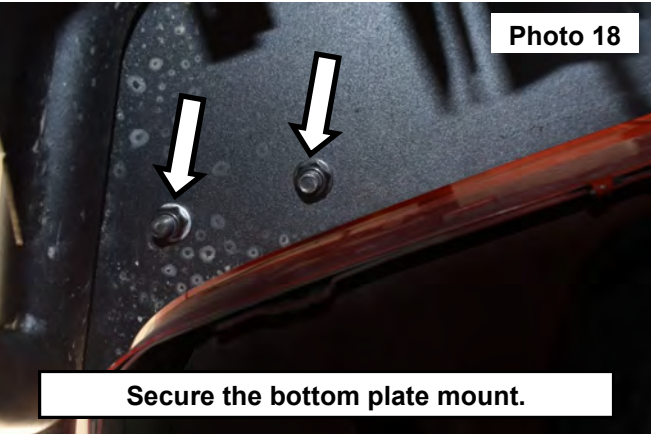


**Sensor shown installed in mount.**

18. Install the license plate bracket onto the bumper. Secure using (2) of the supplied 8mm button head bolts (4) 8mm flat washers and (2) 8mm lock nuts. Tighten using a 6mm allen and 13mm socket. **See Photos 17 and 18.**



**Secure the license plate mount.**



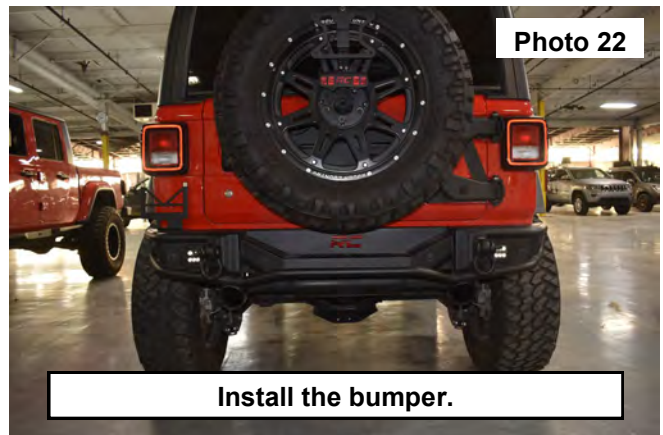
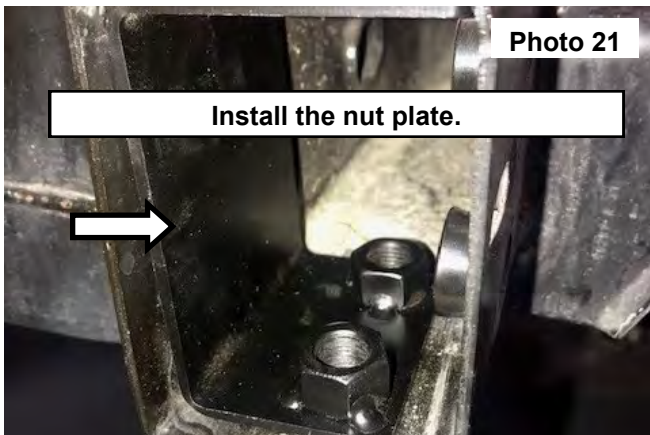
**Secure the bottom plate mount.**



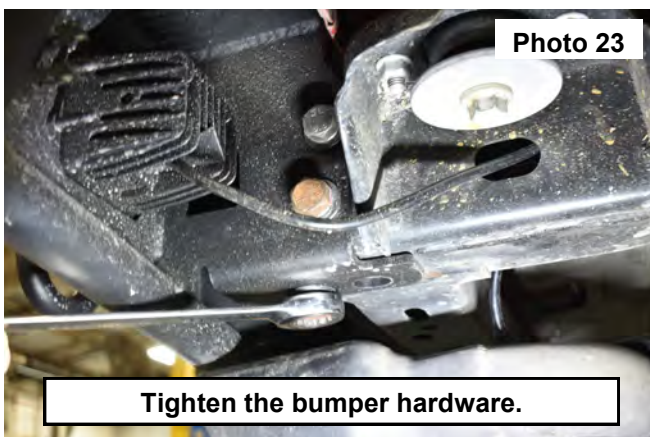
19. Install (2) of the supplied license plate nut inserts into the bracket. **See Photo 19.**
20. Install the 2" flush mounted lights into each side of the bumper using (4) of the supplied button head bolts, (4) hex nuts with the light kit. **See Photo 20.**



21. Insert the double nut plate into the passengers side frame as shown. **See Photo 21.**
22. Support the bumper. Then install onto the frame mounts on each side of the vehicle. **See Photo 22.**



23. Secure each side of the bumper using the factory hardware and the supplied qty two 14mm bolts in the passengers side. Tighten using a 21mm wrench. **See Photo 23.**
24. Install (2) of the supplied D-rings onto the rear mounts of the bumper. **See Photo 24.**
25. Connect the back up sensor wiring harness.



By purchasing any item sold by Rough Country, LLC, the buyer expressly warrants that he/she is in compliance with all applicable, State, and Local laws and regulations regarding the purchase, ownership, and use of the item. It shall be the buyers responsibility to comply with all Federal, State and Local laws governing the sales of any items listed, illustrated or sold. The buyer expressly agrees to indemnify and hold harmless Rough Country, LLC for all claims resulting directly or indirectly from the purchase, ownership, or use of the items.

