



GM 2019-20 Crew Cab Under Seat Storage Silverado / Sierra 1500, 2500, 3500

Thank you for choosing Rough Country for all your vehicle needs.

Please read instructions before beginning installation. Check the kit hardware against the kit contents shown below. Be sure you have all needed parts and know where they go.

If question exist, please call us @1-800-222-7023. We will be happy to answer any questions concerning this product.

Check all fasteners for proper torque. Check to ensure for adequate clearance between all components.

Periodically check all hardware for tightness.

KIT CONTENTS:
Storage Box x1

TOOLS NEEDED:
10mm Wrench or Socket



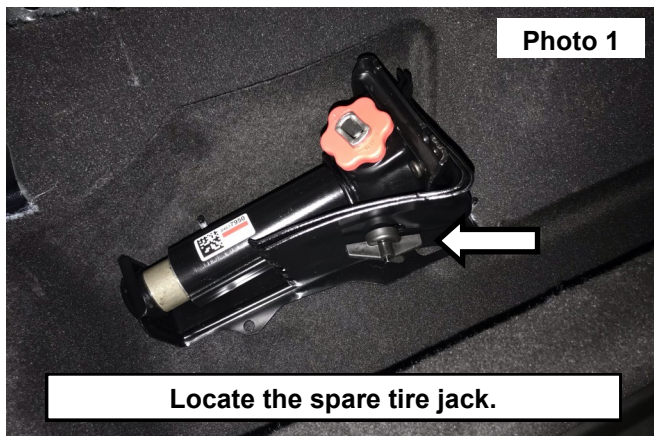
Torque Specs:

Size	Grade 5	Grade 8	Size	Class 8.8	Class 10.9
5/16"	15 ft/lbs	20ft/lbs	6MM	5ft/lbs	9ft/lbs
3/8"	30 ft/lbs	35ft/lbs	8MM	18ft/lbs	23ft/lbs
7/16"	45 ft/lbs	60ft/lbs	10MM	32ft/lbs	45ft/lbs
1/2"	65 ft/lbs	90ft/lbs	12MM	55ft/lbs	75ft/lbs
9/16"	95 ft/lbs	130ft/lbs	14MM	85ft/lbs	120ft/lbs
5/8"	135ft/lbs	175ft/lbs	16MM	130ft/lbs	165ft/lbs
3/4"	185ft/lbs	280ft/lbs	18MM	170ft/lbs	240ft/lbs

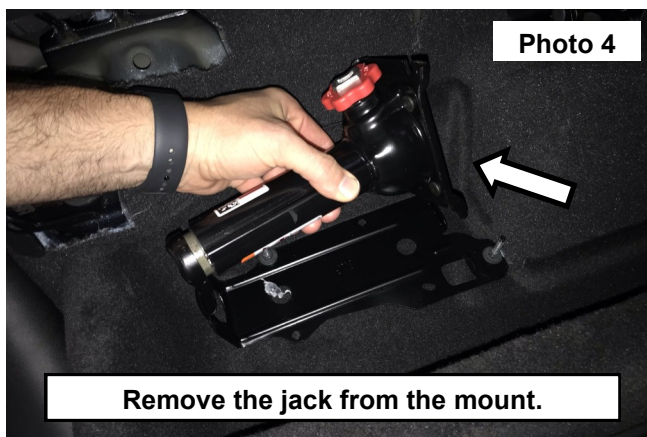


INSTALLATION INSTRUCTONS

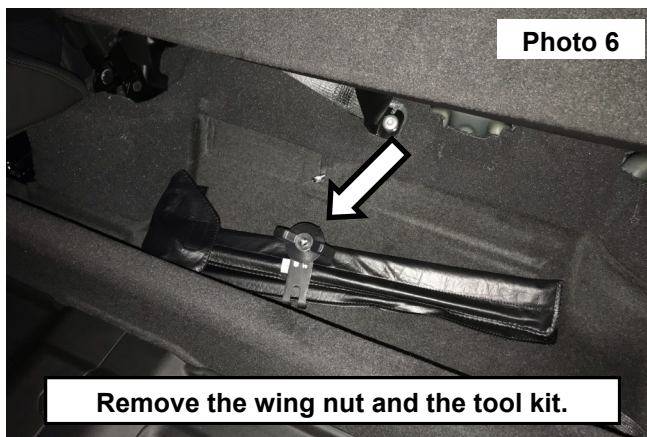
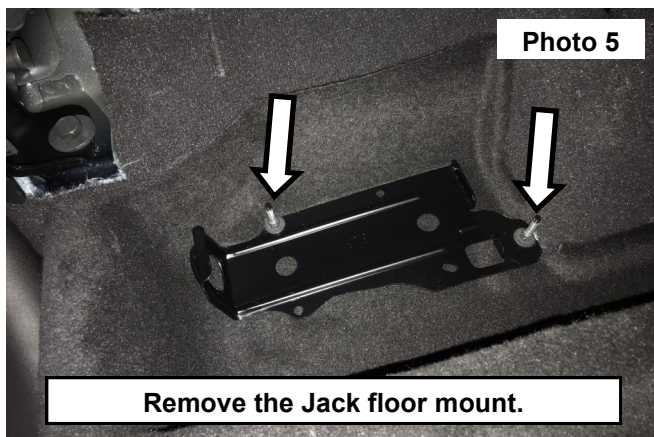
1. Locate the jack under the rear passengers seat. **See Photo 1.**
2. Remove the wing nut from the threaded hook and place the wheel chocks to the side. **See Photo 2.**



3. Loosen the jack from the mount and set to the side. **See Photos 3 and 4.**



4. Remove the floor mount from the studs using a 10mm socket and set to the side. **See Photo 5.**
5. Loosen the wing nut from the floor stud and remove the tool kit from under the drivers side rear seat. **See Photo 6.**



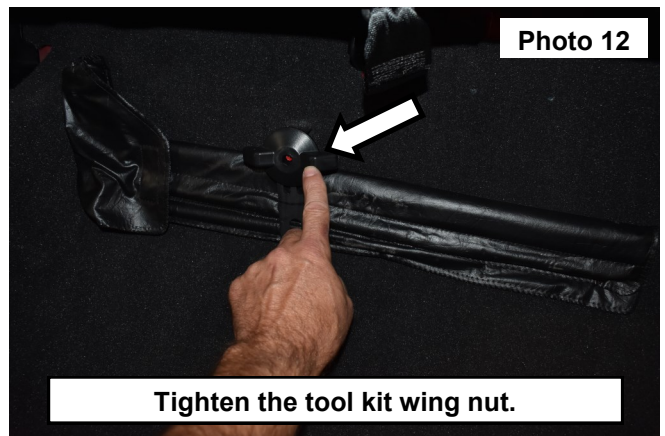
6. Install the storage box onto the (3) studs in the floor of the vehicle. See Photos 7 and 8.



7. Install the jack mount onto the studs and secure using the retained nuts. Tighten using a 10mm socket. See Photo 9.
8. Install the jack into the mount. Then secure the wheel chocks to the jack using the wing nut and threaded hook. See Photo 10.



9. Place the tool kit onto the stud and tighten the wing nut to secure. See Photos 11 and 12.



By purchasing any item sold by Rough Country, LLC, the buyer expressly warrants that he/she is in compliance with all applicable, State, and Local laws and regulations regarding the purchase, ownership, and use of the item. It shall be the buyers responsibility to comply with all Federal, State and Local laws governing the sales of any items listed, illustrated or sold. The buyer expressly agrees to indemnify and hold harmless Rough Country, LLC for all claims resulting directly or indirectly from the purchase, ownership, or use of the items.

