

# ROUGH COUNTRY

## SUSPENSION SYSTEMS®

### RAM 2009-18 Crew Cab Aluminum Step Extrusion Brackets

Thank you for choosing Rough Country for all your vehicle needs.

Please read instructions before beginning installation. Check the kit hardware against the kit contents shown below. Be sure you have all needed parts and know where they go.

If question exist, please call us @1-800-222-7023. We will be happy to answer any questions concerning this product.

Check all fasteners for proper torque. Check to ensure for adequate clearance between all components.

Periodically check all hardware for tightness.

#### Kit Contents:

- Aluminum Rails x2
- Aluminum Steps x2
- End Caps x4
- Forward Facing Brackets x3
- Rear Facing Brackets x3
- Forward Facing Support Brackets x3
- Rear Facing Support Brackets x3
- Bolt Plates x6

#### Tools Needed:

- 5mm Allen Wrench
- 13mm Socket/Wrench

#### Hardware Included:

- 8mm x 25mm Bolts x60
- 8mm Button Head Bolts x12
- 8mm Flange Lock Nuts x36
- 8mm Lock Nuts (for Body) x24
- 8mm Finish Nut (Coated) x12
- 8mm Oversized Washers x30



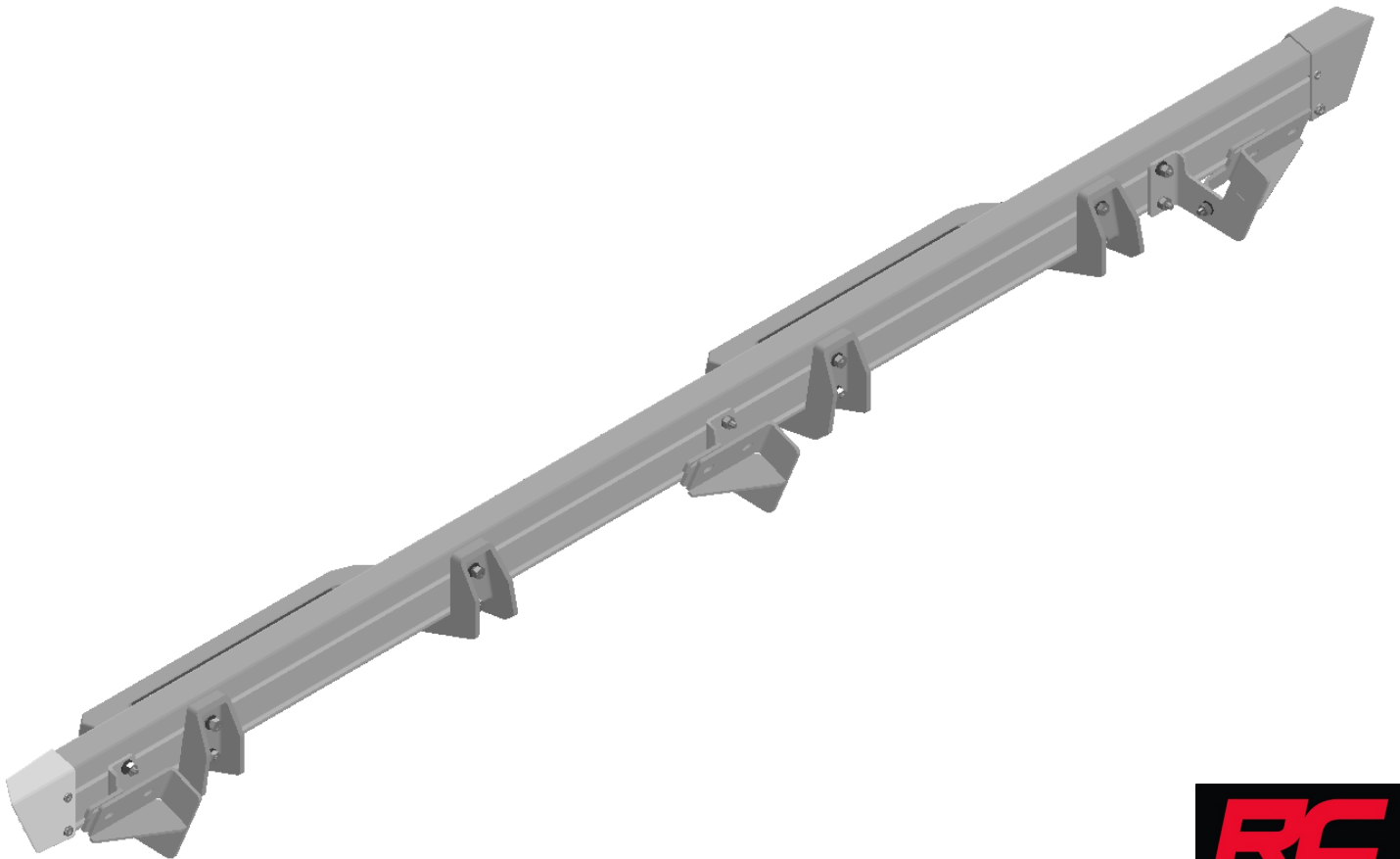
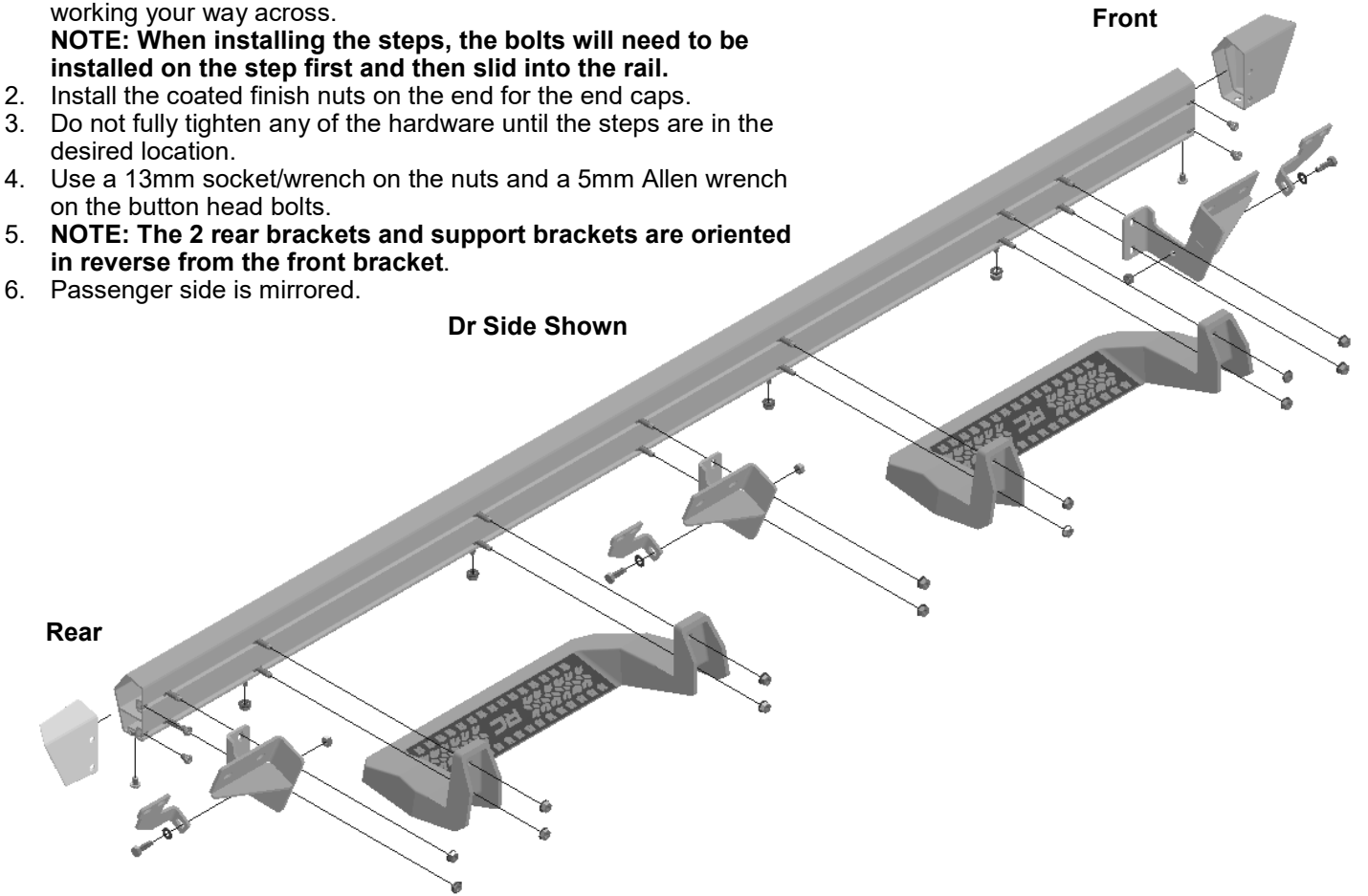
#### Torque Specs:

Size	Grade 5	Grade 8	Size	Class 8.8	Class 10.9
5/16"	15 ft/lbs	20ft/lbs	6MM	5ft/lbs	9ft/lbs
3/8"	30 ft/lbs	35ft/lbs	8MM	18ft/lbs	23ft/lbs
7/16"	45 ft/lbs	60ft/lbs	10MM	32ft/lbs	45ft/lbs
1/2"	65 ft/lbs	90ft/lbs	12MM	55ft/lbs	75ft/lbs
9/16"	95 ft/lbs	130ft/lbs	14MM	85ft/lbs	120ft/lbs
5/8"	135ft/lbs	175ft/lbs	16MM	130ft/lbs	165ft/lbs
3/4"	185ft/lbs	280ft/lbs	18MM	170ft/lbs	240ft/lbs

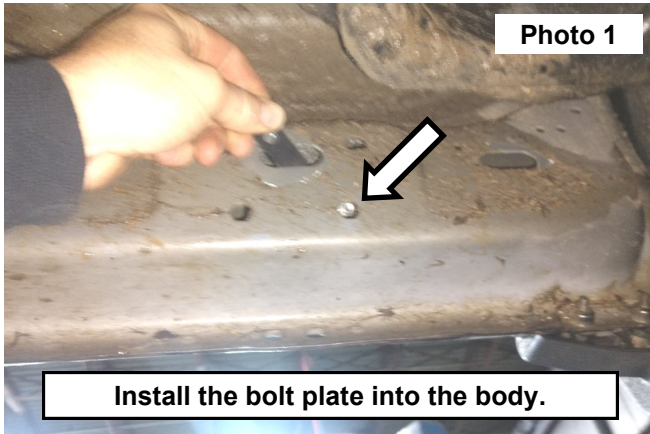


## INSTALLATION INSTRUCTIONS

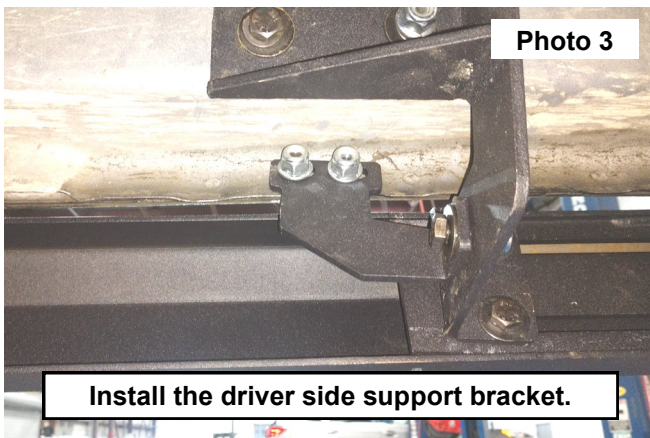
1. Assemble the following components starting from one end and working your way across.  
**NOTE: When installing the steps, the bolts will need to be installed on the step first and then slid into the rail.**
2. Install the coated finish nuts on the end for the end caps.
3. Do not fully tighten any of the hardware until the steps are in the desired location.
4. Use a 13mm socket/wrench on the nuts and a 5mm Allen wrench on the button head bolts.
5. **NOTE: The 2 rear brackets and support brackets are oriented in reverse from the front bracket.**
6. Passenger side is mirrored.



7. Install the bolt plate into the body and through stock holes. Install the assembled steps onto the bolt plate and install a supplied 8mm bolt and washer into the welded nut on the bolt plate. **See Photo 1 and Photo 2.**



8. Tighten the support bracket to the body using the supplied 8mm hardware. **See Photo 3.**



9. Adjust the steps to the desired locations and tighten all the hardware.

By purchasing any item sold by Rough Country, LLC, the buyer expressly warrants that he/she is in compliance with all applicable, State, and Local laws and regulations regarding the purchase, ownership, and use of the item. It shall be the buyers responsibility to comply with all Federal, State and Local laws governing the sales of any items listed, illustrated or sold. The buyer expressly agrees to indemnify and hold harmless Rough Country, LLC for all claims resulting directly or indirectly from the purchase, ownership, or use of the items.

