

ROUGH COUNTRY

SUSPENSION SYSTEMS®

Rough Country Caliper Cover Kit

Thank you for choosing Rough Country for all your vehicle needs.

Please read instructions before beginning installation. Check the kit hardware against the kit contents shown below. Be sure you have all needed parts and know where they go.

If question exist, please call us @1-800-222-7023. We will be happy to answer any questions concerning this product.

Check all fasteners for proper torque. Check to ensure for adequate clearance between all components.

Periodically check all hardware for tightness.

KIT CONTENTS:

Driver Side FR Caliper Cover x1
 Pass Side FR Caliper Cover x1
 Driver Side RR Caliper Cover x1
 Pass Side RR Caliper Cover x1

TOOLS NEEDED:

8/10MM Wrench (Included)
 Allen Wrench (Included)

HARDWARE INCLUDED:

Caliper Cover Bolt x4
 Caliper Cover Nut x4



Torque Specs:

Size	Grade 5	Grade 8	Size	Class 8.8	Class 10.9
5/16"	15 ft/lbs	20ft/lbs	6MM	5ft/lbs	9ft/lbs
3/8"	30 ft/lbs	35ft/lbs	8MM	18ft/lbs	23ft/lbs
7/16"	45 ft/lbs	60ft/lbs	10MM	32ft/lbs	45ft/lbs
1/2"	65 ft/lbs	90ft/lbs	12MM	55ft/lbs	75ft/lbs
9/16"	95 ft/lbs	130ft/lbs	14MM	85ft/lbs	120ft/lbs
5/8"	135ft/lbs	175ft/lbs	16MM	130ft/lbs	165ft/lbs
3/4"	185ft/lbs	280ft/lbs	18MM	170ft/lbs	240ft/lbs



INSTALLATION INSTRUCTONS

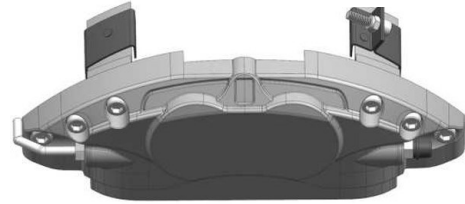
1. Due to the use of aftermarket wheels, ensure clearance between the wheels used on the vehicle and the factory caliper before beginning installation. If no clearance exists a wheel spacer could be needed for adequate clearance.
2. After confirming clearance, remove the front wheels and tires and support the vehicle.
3. Identify the front and rear caliper covers. The front caliper covers are larger than the rear. **See Photo 1 & 2**

Photo 1

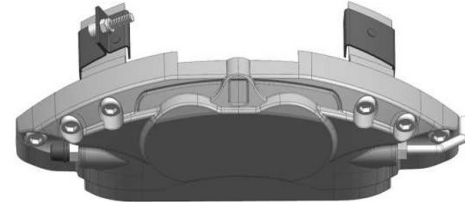


Front Caliper Covers

Photo 2

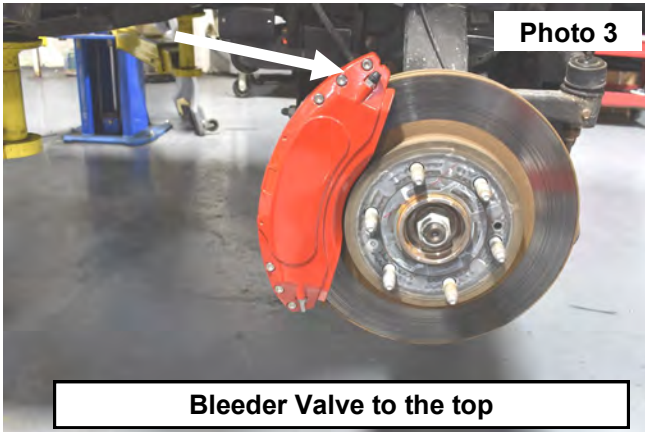


Rear Caliper Covers



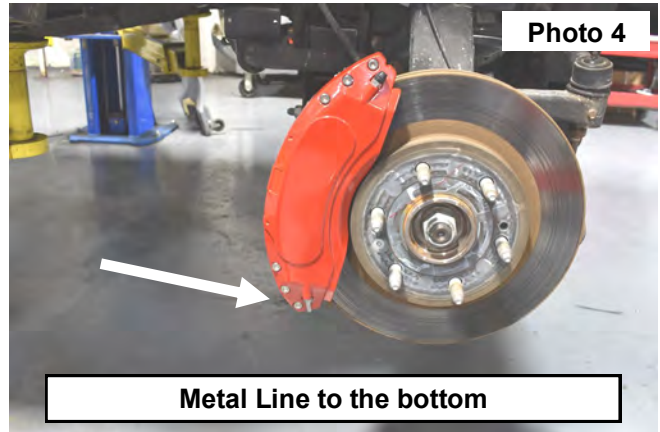
4. Install the front caliper cover with the adjustment bleeder up and the metal line down. **See Photo 3 & 4.**

Photo 3



Bleeder Valve to the top

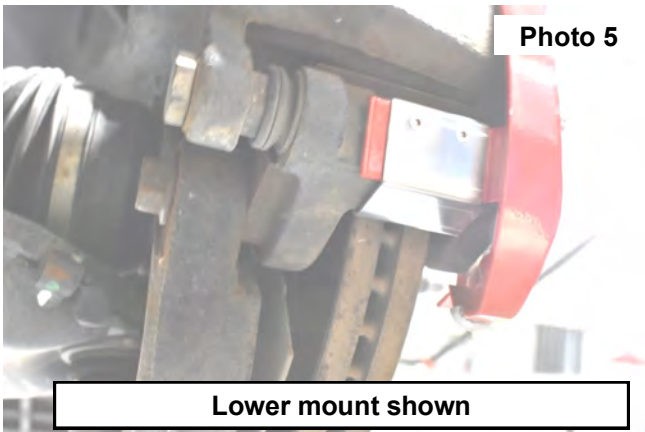
Photo 4



Metal Line to the bottom

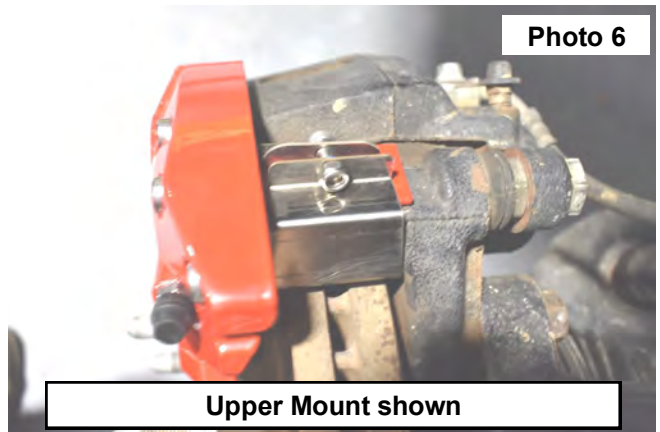
5. Slide the lower mount between the caliper and the rotor as shown in **Photo 5**.
6. Position the upper mount on the top of the caliper and slide the clip between the caliper and rotor. **See Photo 6.**

Photo 5



Lower mount shown

Photo 6



Upper Mount shown

7. Center the caliper cover on the caliper. **See Photo 7.**
8. Secure with the supplied bolt / nut and tighten with the supplied allen wrench. **See Photo 8.**



9. Check to make sure there are no clearance issues with the caliper cover on the rotor and the dust shield. In some cases it could be necessary to slightly modify the dust cover to clear the caliper cover.
10. Install the tires and wheels and check for clearance issues between the wheel and covers. Address as needed to ensure no rubbing is present.
11. Proceed to the rear and install the covers if applicable using the same installation instructions as the front.
12. After tire and wheels are installed lower the vehicle to the ground.
13. Test drive the vehicle making sure there are no clearance issues. Address as needed.

By purchasing any item sold by Rough Country, LLC, the buyer expressly warrants that he/she is in compliance with all applicable, State, and Local laws and regulations regarding the purchase, ownership, and use of the item. It shall be the buyers responsibility to comply with all Federal, State and Local laws governing the sales of any items listed, illustrated or sold. The buyer expressly agrees to indemnify and hold harmless Rough Country, LLC for all claims resulting directly or indirectly from the purchase, ownership, or use of the items.

