



baja designs
The Scientists of Lighting

Ford Raptor (10-15) Fog Pocket Kit

Installation Manual

PN: 44-7550, 44-7847, 44-784



Baja Designs • 2950 Norman Strasse

San Marcos • CA • 92069

Phone 760.560.2252 x3 • Fax 760.560.0383 •

info@bajadesigns.com www.bajadesigns.com



baja designs®
The Scientists of Lighting

LIMITED LIFETIME WARRANTY

Baja Designs proudly offers a LIFETIME WARRANTY against manufacturer's defect on all the products that we manufacture. These are comprehensive warranties; other than the exclusions below – you're covered. If your LED or HID bulb burns out, you're covered. Additionally, cutting off our connector or changing your lenses does not automatically void your warranty.

Exclusions:

Installation errors, abuse, misuse or crash damage. You must be the original owner of the product and can supply proof of purchase. Baja Designs manufactures its own products as well as resells products manufactured by others. Baja Designs makes no express or implied warranties on products not manufactured by Baja Designs including without limitation any warranties or merchantability and fitness for a purpose. We will, however, pass on all warranties made by the manufacturer, who has sole responsibility for performing such warranties. Baja Designs will pay the freight if your product is less than 90 days old, otherwise defective products must be returned to Baja Designs, Inc., freight prepaid. At our option, we will repair or replace items in question and return them at no charge. If the identical product is no longer available, we will replace with a similar product of equal value. Baja Designs Inc. will not be responsible for any indirect or consequential damages in connection with defective merchandise. Items purchased through a Baja Designs authorized dealer must be returned through the dealer. Only available on LED auxiliary lights and product must be in sellable condition at MSRP. Product that has been damaged in any way after the original purchase date will be excluded from this guarantee.

Indemnification:

Buyer hereby acknowledges off-roading, racing and driving at night are dangerous activities and that the products and/or supplies purchased from Baja Designs are used in an inherently dangerous activity that may endanger life and limb; and in no event shall the seller, or seller's heirs and assigns, be held liable for consequential damages, nor shall seller's liability on any claim for damages arising out of or connected with the sale, delivery, or use of purchased products and/or supplies exceed the purchase price of the products and/or supplies.

Buyer is responsible for ensuring that it uses the products (and its vehicle) in accordance with all applicable laws, regulations, guidelines, and standards of care. Buyer acknowledges that some products may only be used when off-roading, and Buyer will comply with all vehicle and road safety guidelines. Buyer is solely responsible for (and will indemnify and hold Bestop harmless for) any claims, losses, damages, fines, fees, costs, or other amounts arising out of Buyer's non-compliance with these provisions.

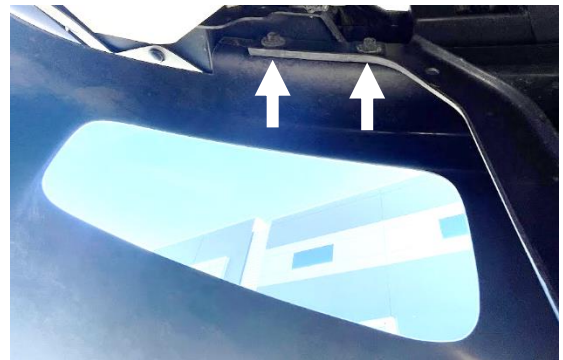


baja designs
The Scientists of Lighting

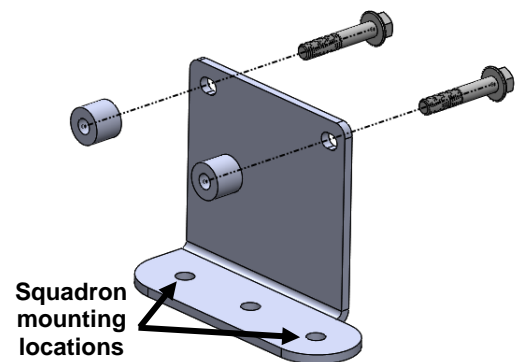
Tools Needed:

- 10mm Socket/wrench
- 9/16" Wrench and Socket
- 4mm Allen Wrench
- 12mm Socket/wrench
- Wire Stripper and cutter
- Pliers

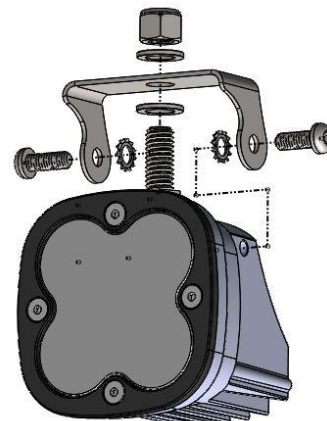
Step 1: Start by removing the (2) arrowed OEM socket head bolts with the 10mm socket/wrench just above the fog pocket location on the inside of the bumper (Driver side shown). Repeat for passenger side.



Step 2: Once that has been done, you can begin installing the Baja Designs Fog Pocket Mounts with the provided 8x45 Bolts. Use provided spacers in-between the brackets and the mounting surface as shown. Repeat for both sides. Driver side bracket shown.



Step 3: Assemble the Squadrons as shown using the 4mm Allen wrench to attach the u-bracket to the light. With the 9/16" wrench and socket, mount the light assembly to the Raptor fog brackets. **Note:** hand assemble the large mounting bolt through the u-bracket before attaching to the light. Repeat for all lights.

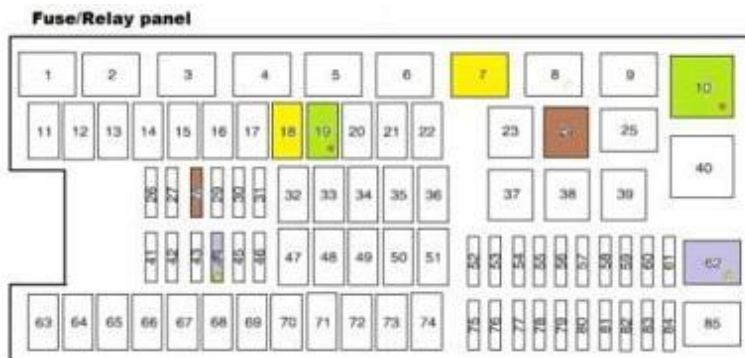




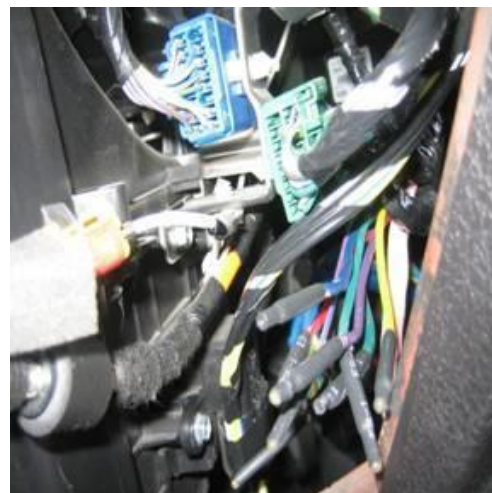
Wiring:

The 1st generation Ford Raptor upfitter wires require two steps for use. There is a connection that needs to be made behind the glovebox in the cab and then another connection inside the engine compartment. The connection behind the glove box sends power to the wires in the engine compartment. **Do not use the #4 Upfitter switch for "Pro level kit" (Brown wire behind the glove box).**

Upfitter Switch	Amps	Wire Color – Glove Box	Wire Color – Under Hood
1	30	Yellow	Red
2	30	Green-Brown Stripe	Green
3	15	Purple-Green Strip	Blue
4	10	Brown-Thin Wire	Purple



1. Remove the end of the dash on the passenger side along with the glove box to access these wires. The glovebox can be opened, sides pressed in, and then dropped down to reveal the inside of the dash. **Note:** The images below show the side panels removed.





baja designs
The Scientists of Lighting

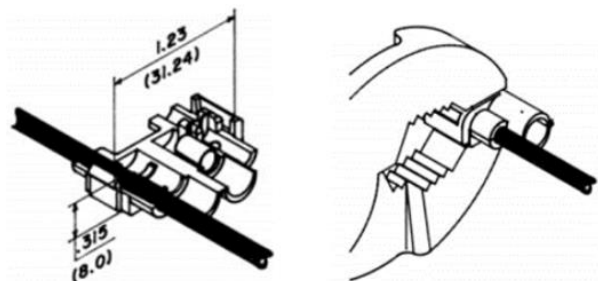
2. There are eight wires total behind the glovebox. Strip one desired auxiliary switch wire referencing the table above for switches 1-4. Strip the desired “passthrough” wire (Red, Green, Blue, or Purple), any can be used.

Now, with the provided solder seal connector, place it over the wires making sure the conducting part of each wire is overlapped. With a heat gun (preferred), or a lighter, fuse together the wires first where the solder patch is located, then follow with the heatshrink portions of the connection.



A second switch wire can be used if separate switching is desired. Repeat the previous step with the second set of wires. The glovebox and dash end piece can be replaced after testing the function of the lights.

3. With the provided 2-pin upfitter harnesses, use pliers to clasp the splice terminal over each connection on the “passthrough” wire from step 2. If separate switching is desired, clasp each harness over each wire used in step 2. Attach the ring terminals of the upfitter harnesses to the local ground located along the passenger side inner fender next to the gas strut using the 10mm socket/wrench.



4. Route the upfitter harnesses down to the passenger side fog pocket. Attach each provided splitter to the upfitter harnesses. Attach the short lead of each splitter harness to the passenger side Squadron lights. Route the long lead of each splitter harness across the core support to the driver side fog pocket and attach to each Squadron.

Tie all wires away from sharp, hot, and/or rotating components.

Re-torque all the fasteners after 100 miles.

Your install is now complete! Thank you for choosing Baja Designs.