

ROUGH COUNTRY

SUSPENSION SYSTEMS®

Toyota Tacoma Bed Mount Spare Tire Carrier

Thank you for choosing Rough Country for all your vehicle needs.

Please read instructions before beginning installation. Check the kit hardware against the kit contents shown below. Be sure you have all needed parts and know where they go.

If question exist, please call us @1-800-222-7023. We will be happy to answer any questions concerning this product.

Check all fasteners for proper torque. Check to ensure for adequate clearance between all components.

Periodically check all hardware for tightness.

KIT CONTENTS:

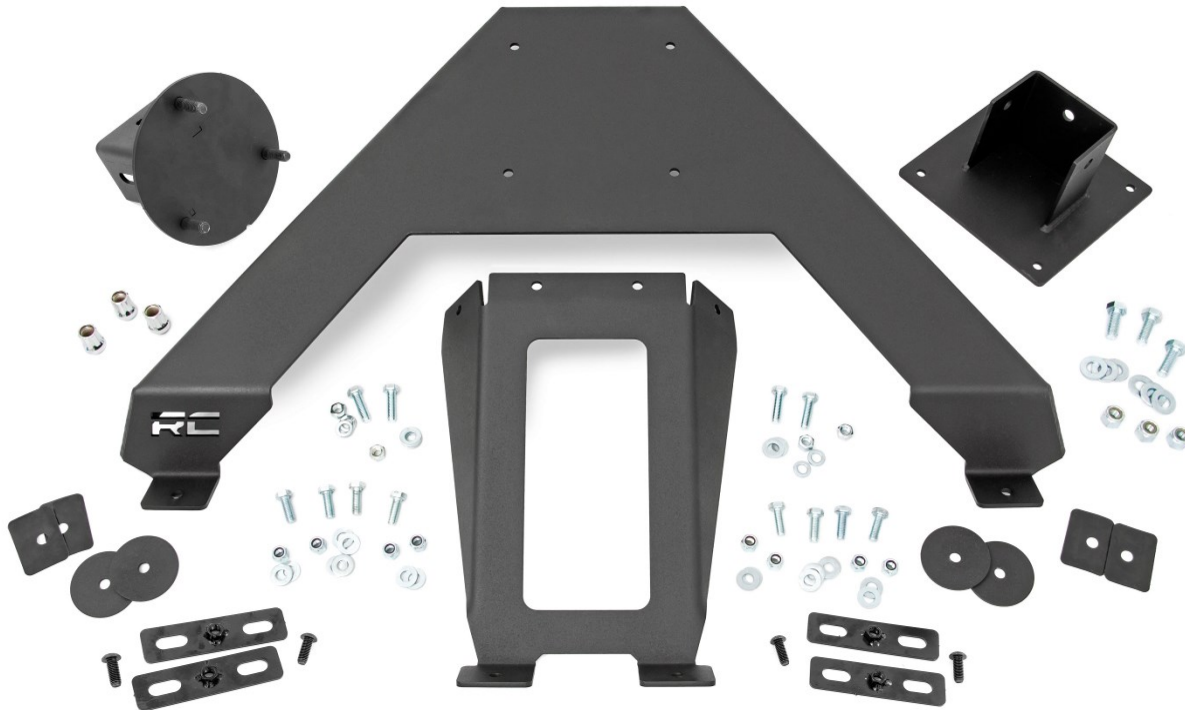
Tire Carrier x1
Gusset x1
Wheel Adapter Mount x1
Adapter Mount x1
Gaskets x4
Mounting Brackets x4

TOOLS NEEDED:

9/16 wrench and socket
3/4 wrench and socket
Ratchet
Torque Wrench
13/32 Bit
Drill Motor
Painters Tape
Pen
Tape Measure
Width of Tire Straight Edge

HARDWARE INCLUDED:

3/8" x 1" Hex Head Bolts x12
3/8" Flat Washers x24
3/8" Lock Washer x4
3/8" Lock Nuts x12
1/2" x 1-1/4" Hex Head Bolts x3
1/2" Flat Washers x6
1/2" Nylock Nut x3
12mm x 1.75mm Lug Nuts x3
Splined Socket Key x1
Clip Nuts x8



Torque Specs:

Size	Grade 5	Grade 8	Size	Class 8.8	Class 10.9
5/16"	15 ft/lbs	20ft/lbs	6MM	5ft/lbs	9ft/lbs
3/8"	30 ft/lbs	35ft/lbs	8MM	18ft/lbs	23ft/lbs
7/16"	45 ft/lbs	60ft/lbs	10MM	32ft/lbs	45ft/lbs
1/2"	65 ft/lbs	90ft/lbs	12MM	55ft/lbs	75ft/lbs
9/16"	95 ft/lbs	130ft/lbs	14MM	85ft/lbs	120ft/lbs
5/8"	135ft/lbs	175ft/lbs	16MM	130ft/lbs	165ft/lbs
3/4"	185ft/lbs	280ft/lbs	18MM	170ft/lbs	240ft/lbs

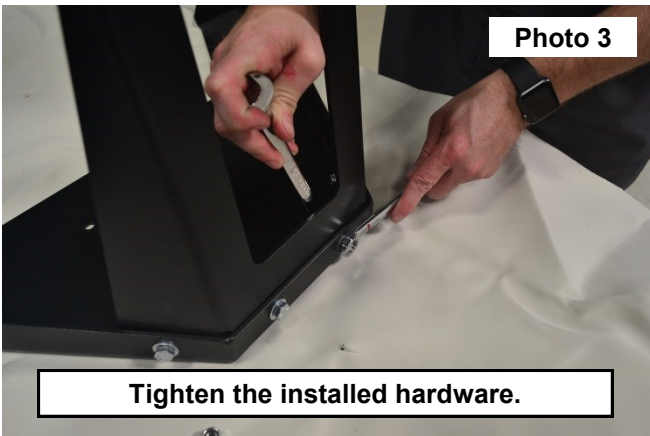


INSTALLATION INSTRUCTIONS

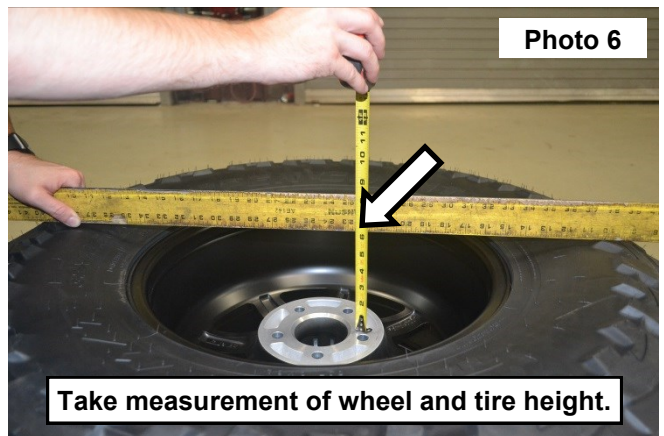
1. Install the gusset to the inside of the tire carrier using 4 of the supplied 3/8-16 x 1 hex head bolts (8) 3/8 flat washers and (4) 3/8-16 nylock nuts. **See Photo 1 and 2.**



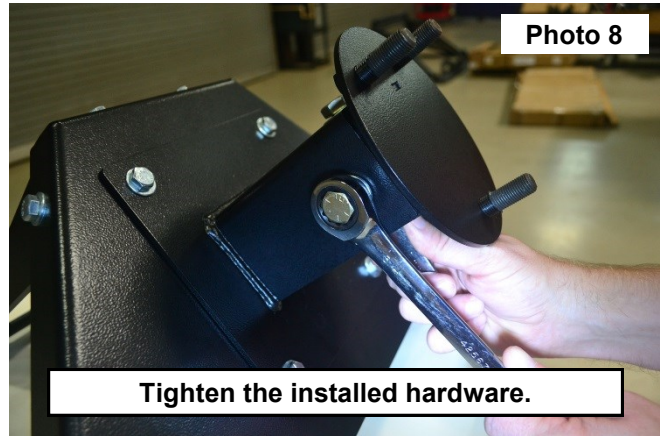
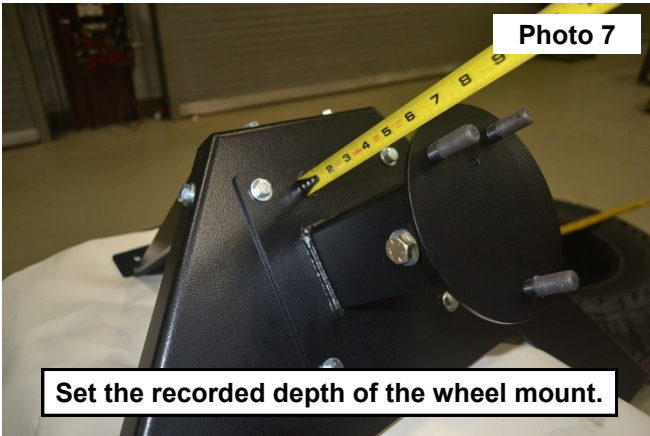
2. Torque the 3/8 hardware to 35 ft-lbs. using a 9/16 wrench and socket. **See Photo 3.**
3. Install the adapter mount onto the front side of the carrier using 4 of the supplied 3/8-16 x 1 hex head bolts (8) 3/8 flat washers and (4) 3/8-16 nylock nuts. Torque to 35 ft-lbs. using a 9/16 wrench and socket. **See Photo 4.**



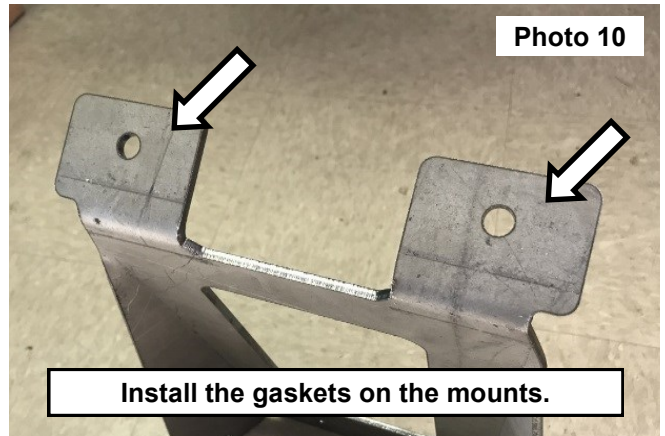
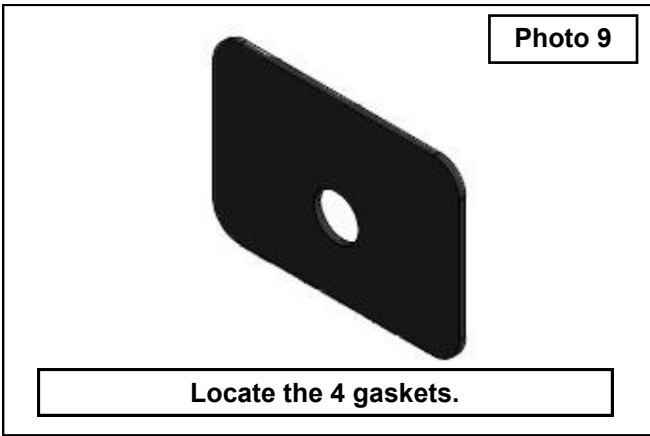
4. Install the wheel mount into the installed adapter mount using 3 of the supplied 1/2-13 x 1-1/4 hex head bolts (6) 1/2" flat washers and (3) 1/2-13 nylock nuts. **See Photo 5.** Do not tighten at this time.
5. Measure the wheel and tire that will be installed onto the mount. Laying a straight edge on the tire, take a measurement of the tire height from the mounting flange of the wheel. Take measurement _____. **See Photo 6.**



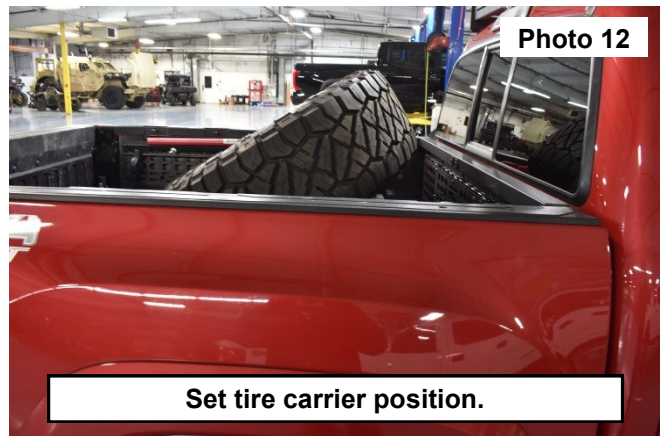
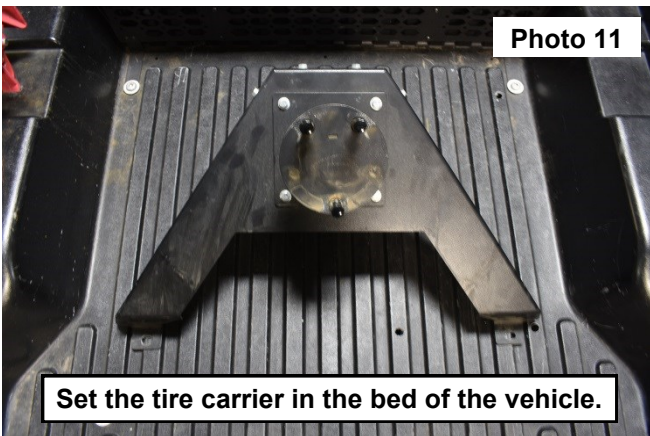
6. Use a tape measure to set the recorded dept of the wheel mount. Torque the hardware to 90 ft-lbs. using a 3/4" wrench and socket. **See Photos 7 and 8.**



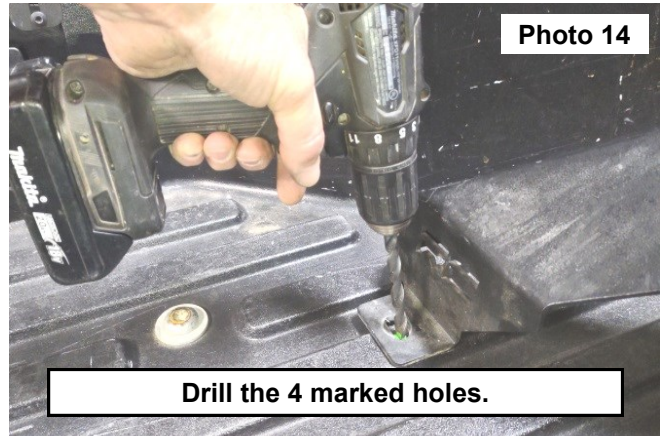
7. Locate the 4 gaskets. **See Photo 9.**
8. Install 1 of the gaskets onto each mount on the bottom of the tire carrier mount. **See Photo 10.**



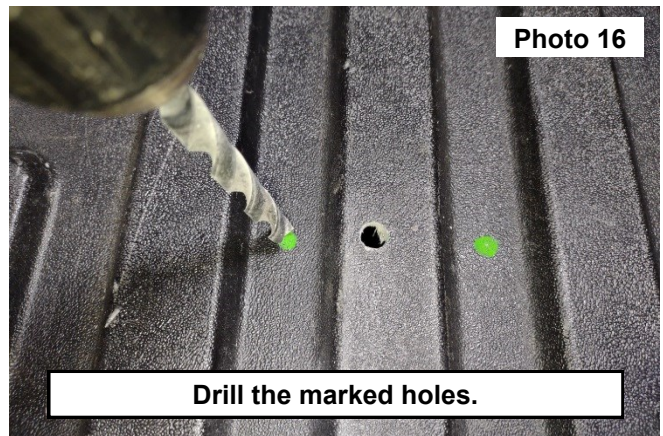
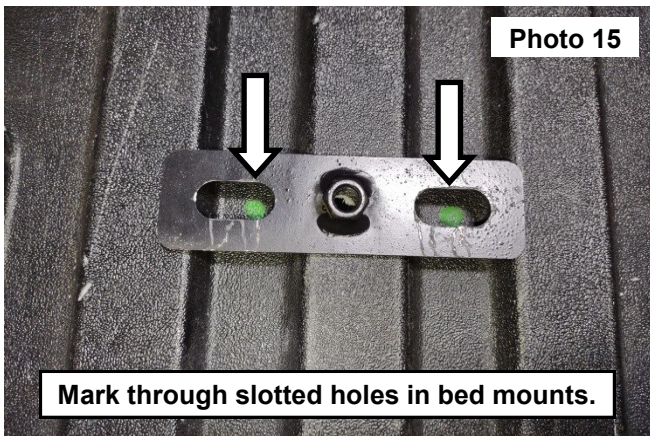
9. Set the tire carrier in the bed of the vehicle. **See Photo 11.**
10. Temporarily install the wheel and tire onto the tire carrier. Set the carrier in the desired position. Double check clearances in-between the tire and the tire carrier. **See Photo 12.**



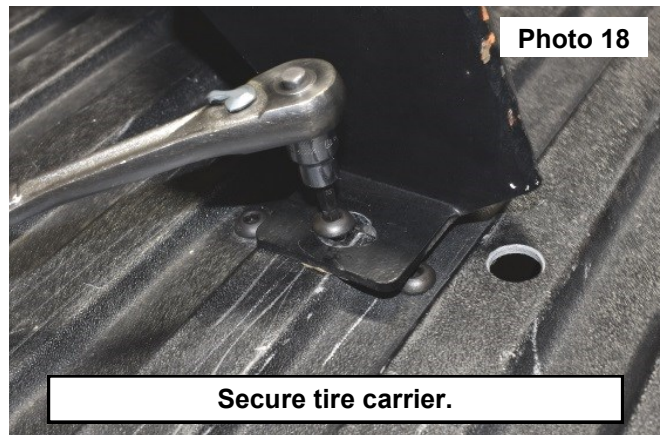
11. Use a pen to mark the 4 mounting locations. **See Photo 13.**
12. **▲ NOTICE** Check clearances under the bed before drilling. Use a 13/32 bit to center drill the marked holes through the bed floor. **See Photo 14.**



13. Place the bed mount brackets over each of the drilled holes and mark through the slotted holes. **See Photo 15.**
14. Use a 13/32 bit to drill the marked holes through the bed floor. **See Photo 16.**



15. Install the supplied clip nuts to the bed mount brackets and install the supplied 3/8" x 1" button head bolts and flat washers to the bed mount brackets using a 7/32" Allen wrench. Then install the button head bolts through the tire carrier to the bed mount brackets. **See Photo 17 and Photo 18.**



16. Install the wheel and tire onto the carrier secure using the supplied lug nuts.

By purchasing any item sold by Rough Country, LLC, the buyer expressly warrants that he/she is in compliance with all applicable, State, and Local laws and regulations regarding the purchase, ownership, and use of the item. It shall be the buyers responsibility to comply with all Federal, State and Local laws governing the sales of any items listed, illustrated or sold. The buyer expressly agrees to indemnify and hold harmless Rough Country, LLC for all claims resulting directly or indirectly from the purchase, ownership, or use of the items.

