

ROUGH COUNTRY

SUSPENSION SYSTEMS®

21 - Up Ford Bronco Safari Bar Kit

Thank you for choosing Rough Country for all of your suspension needs.

Rough Country recommends that a certified technician install this system. In addition to these instructions, professional knowledge of disassemble/reassembly procedures as well as post installation checks must be known. Attempts to install this system without this knowledge and expertise may jeopardize the integrity and/or operating safety of the vehicle. Please read all the instructions before beginning the installation. Check the kit hardware against the "Kit Contents" list below. If question exist, please call us @1-800-222-7023. We will be happy to answer any questions concerning this product. Check all fasteners for proper torque. Check to ensure for adequate clearance between all components. Check and retighten wheels at 50 miles and again at 500 miles. Periodically check all hardware for tightness. Be sure you have all the needed parts and understand where they go. Also, please review the "Tools Needed" list to be certain you have the necessary tools to complete the installation.



21 - Up Bronco Stinger Bar

TOOLS NEEDED:

Torx T-40
3/16" Hex Wrench
1/2" Wrench
9/16" Wrench
13mm Wrench
14mm Wrench

KIT CONTENTS:

Stinger Bar
Light Bar Mount

HARDWARE INCLUDED:

5/16" Button Head Bolt (2)
5/16" Nut-sert (2)
5/16" Fender Washer (2)

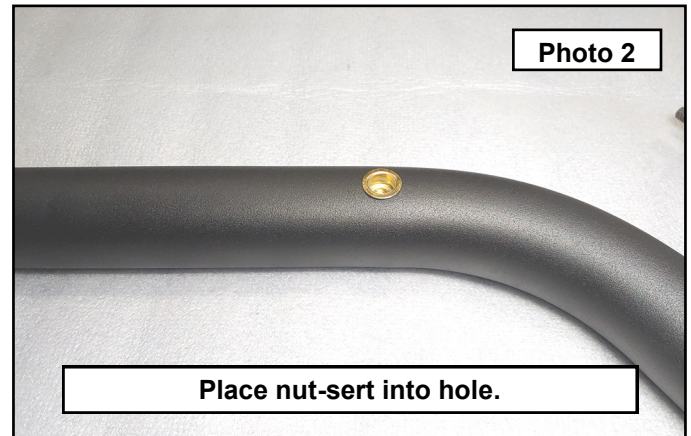
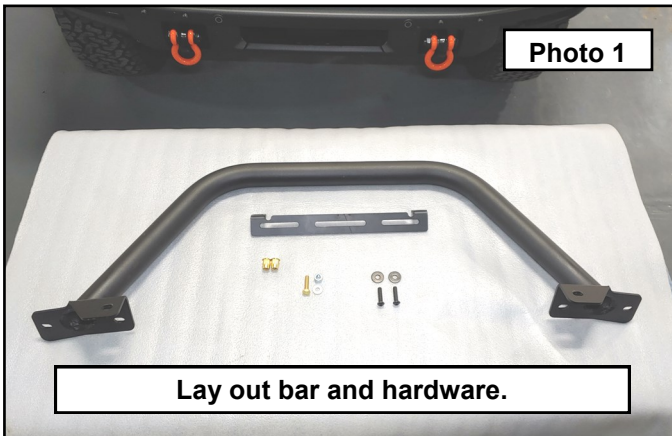
USED FOR NUTSERT INSTALL

5/16" Bolt (1)
5/16" Washer (1)
3/8" Nut(1)

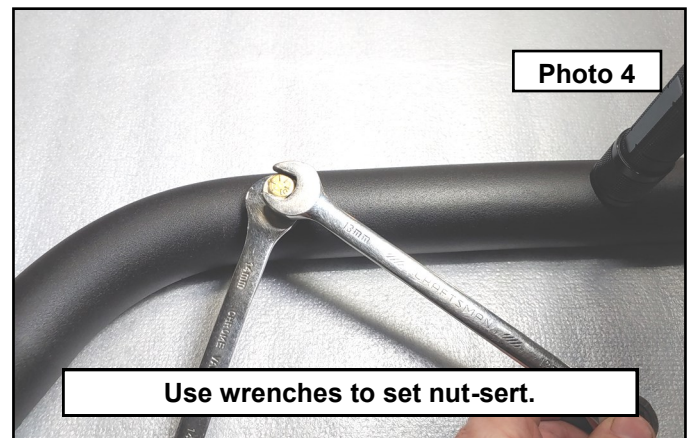
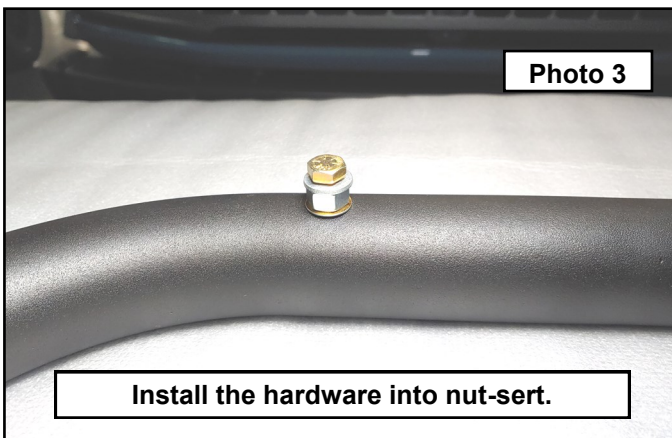


Front Installation

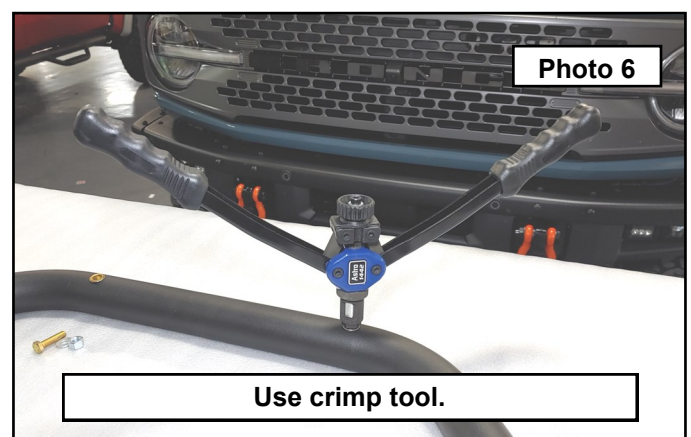
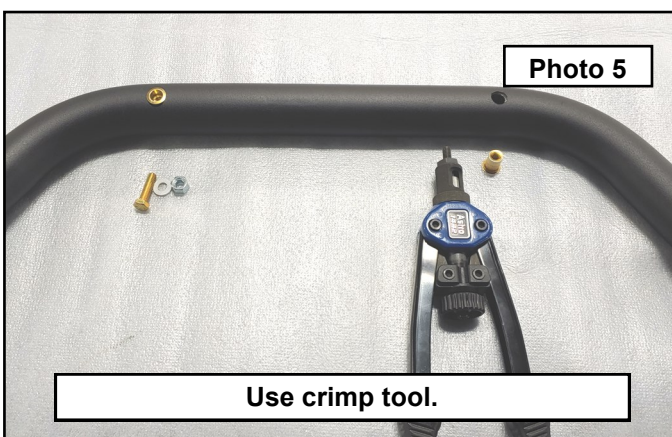
1. Park your vehicle on a clean flat surface, engage the parking brake and block the rear tires.
2. **Save all hardware removed from the vehicle unless otherwise noted.**
3. Light option kits: Lay out the stinger bar and hardware. Photo 1
4. The kit comes with two 5/16" nut-sert to install into the tube if you plan on utilizing the light bar mount. We provide a 5/16" bolt, washer and a 3/8" nut to act as a spacer to install the nut-sert if you do not have a tool for installation. Start by install the nut-sert into the hole on the back side of the tube. Photo 2



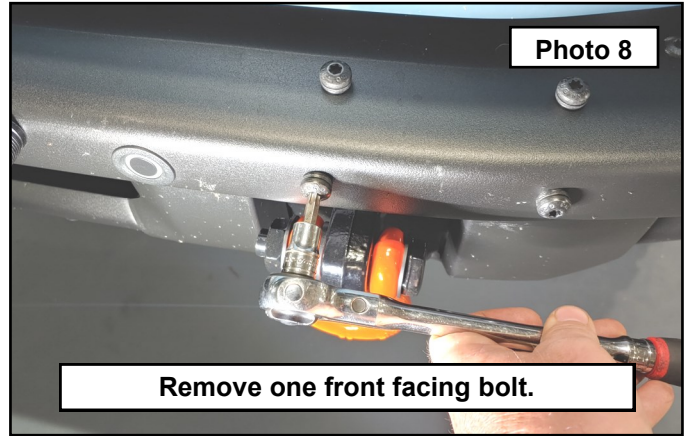
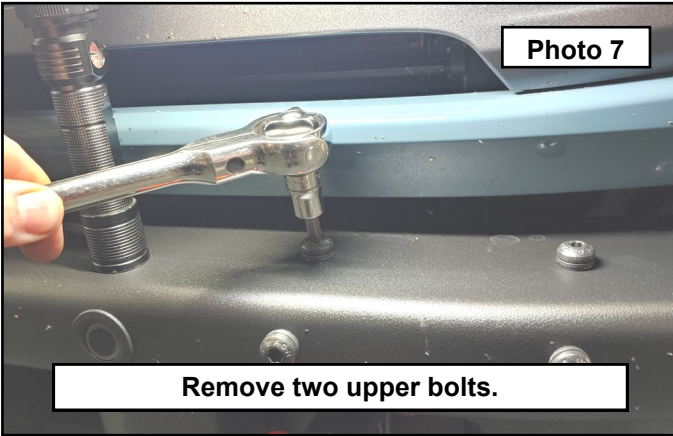
5. Thread the 5/16" bolt with washer and 3/8" nut into the nut-sert as shown. Photo 3
6. Use a 9/16" wrench to hold the 3/8" nut still while placing downward pressure onto the nut-sert. Use a 1/2" wrench to tighten the 5/16" bolt down to set the nu-sert crimp. Tighten until fully crimped into place. Photo 4



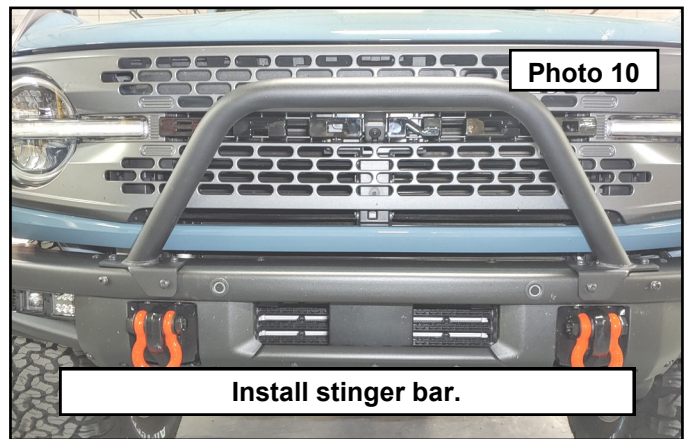
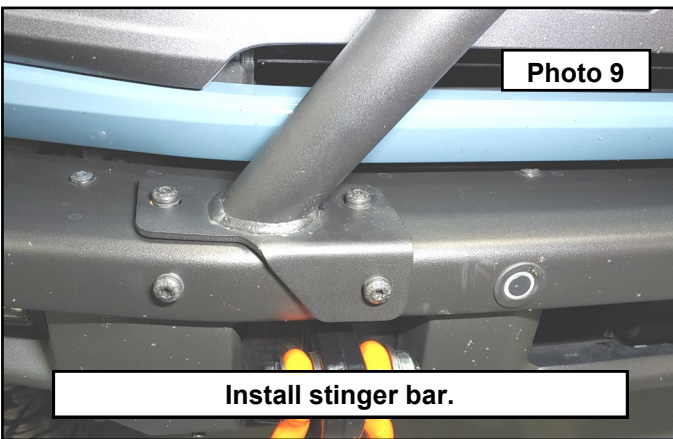
7. If you have a nut-sert crimp tool, use a 5/16" arbor to install the nut-sert to the tube. Photo 5 / 6



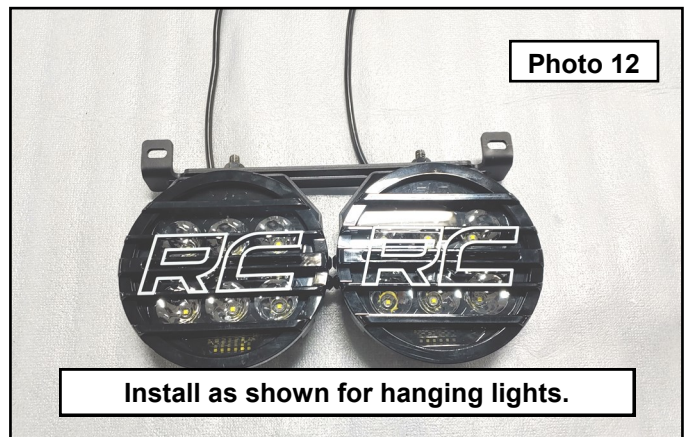
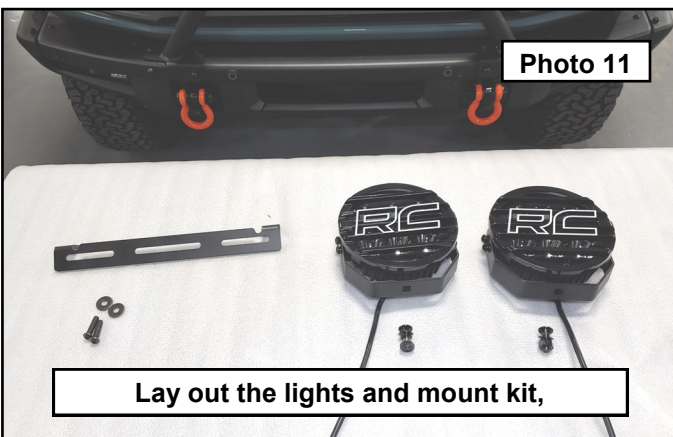
8. On either side of the bumper above the factory tow hooks you will see 4 bolts. Remove the two upper bolts and one front facing bolt using a t-40 Torx driver. Photo 7 / 8



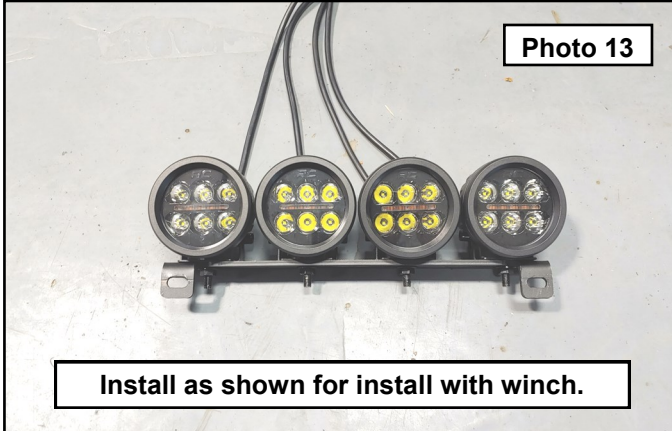
9. Install the stinger bar to the bumper by starting all of the previously removed factory hardware. Once all is in place, torque to 35 ft/lbs. Photo 9 / 10



10. Light optional kits: Depending on which light options and if you have a winch kit, and how you want to run the lights; install the lights to the light bar mount in your desired orientation. Either hanging the lights as shown, or running the lights above the bar. If hanging the lights, install the lights to the mount with the tabs facing up and to the front of the lights using the hardware provided with the light kit. Photo 11 / 12



11. If you have the high mount winch kit installed, you can still use the light bar mount and will be mounting the lights to the top of the bar. In this instance you will need to mount the lights to the mount with the mounting tabs facing down and to the front of the lights. **Photo 13**
12. Install the light bar mount to the back of the stinger bar using the provided 5/16" button head bolts and fender washers. Shown with the R/C 3.5" Round with amber DRL Installed. **Photo 14**



13. Shown with the R/C 6.5" round with amber DRL lights installed. Run the wiring to suit. We recommend running the harness through the slot between the bumper and grill as there are not any obstructions. Going through the grill will interrupt the action of the automated flapper vents. **Photo 15**



By purchasing any item sold by Rough Country, LLC, the buyer expressly warrants that he/she is in compliance with all applicable , State, and Local laws and regulations regarding the purchase, ownership, and use of the item. It shall be the buyers responsibility to comply with all Federal, State and Local laws governing the sales of any items listed, illustrated or sold. The buyer expressly agrees to indemnify and hold harmless Rough Country, LLC for all claims resulting directly or indirectly from the purchase, ownership, or use of the items.