

JEEP 2018-UP JL / 2020-UP JT 9" LED Headlight Kit

Thank you for choosing Rough Country for all your vehicle needs.

Please read instructions before beginning installation. Check the kit hardware against the kit contents shown below. Be sure you have all needed parts and know where they go.

If question exist, please call us @1-800-222-7023. We will be happy to answer any questions concerning this product.

Check all fasteners for proper torque. Check to ensure for adequate clearance between all components.

Periodically check all hardware for tightness.

KIT CONTENTS:

- Driver LED Headlight x1
- Pass LED Headlight x1
- In-Line Headlight Adapters x2
- DRL Wiring harness x1
- Fuse-able Link x1

TOOLS NEEDED:

- 10mm Socket
- Auto Trim Puller / Flat Head Screwdriver
- Wire Crimpers



Torque Specs:

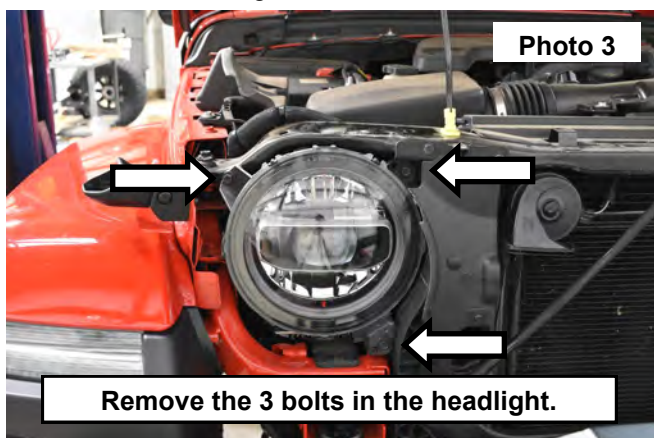
Size	Grade 5	Grade 8	Size	Class 8.8	Class 10.9
5/16"	15 ft/lbs	20ft/lbs	6MM	5ft/lbs	9ft/lbs
3/8"	30 ft/lbs	35ft/lbs	8MM	18ft/lbs	23ft/lbs
7/16"	45 ft/lbs	60ft/lbs	10MM	32ft/lbs	45ft/lbs
1/2"	65 ft/lbs	90ft/lbs	12MM	55ft/lbs	75ft/lbs
9/16"	95 ft/lbs	130ft/lbs	14MM	85ft/lbs	120ft/lbs
5/8"	135ft/lbs	175ft/lbs	16MM	130ft/lbs	165ft/lbs
3/4"	185ft/lbs	280ft/lbs	18MM	170ft/lbs	240ft/lbs

INSTALLATION INSTRUCTONS

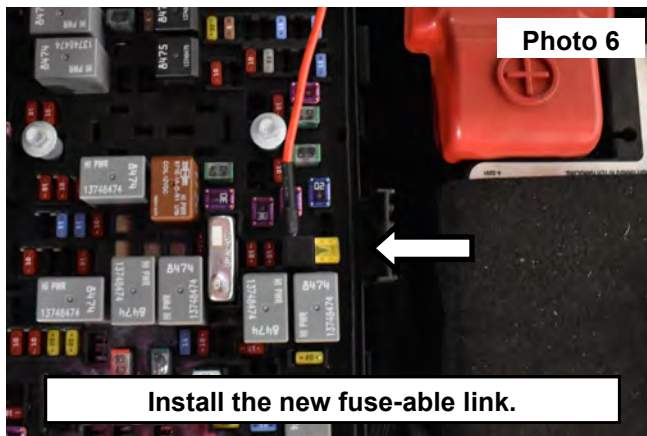
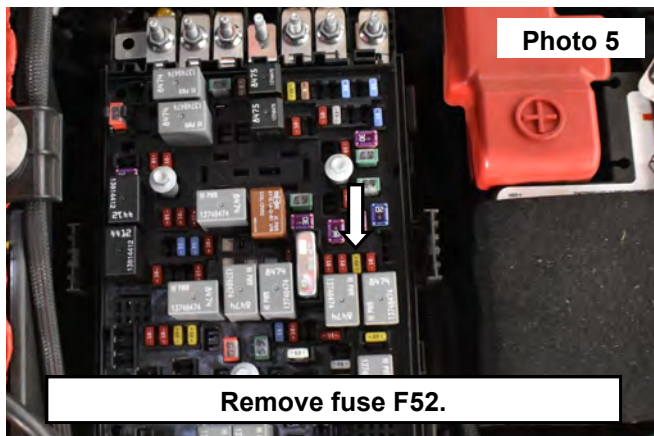
1. Remove the (6) push pins securing the top of the grille using an auto trim puller or flat head screwdriver. **See Photo 1.** Retain the push pins.
2. Lean the top of the grill out and release the clips at the bottom of the grille with a flat head screwdriver. **See Photo 2.**



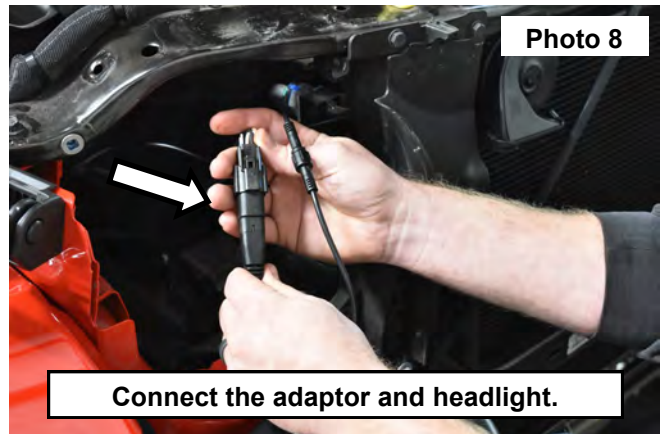
3. Remove the grill and set aside in a safe location.
4. Using a 10mm socket remove the (3) bolts in each of the head lights. **See Photo 3.** Retain hardware.
5. Remove the headlights from the mount and disconnect the plug from the headlight. **See Photo 4.**



6. Remove the fuse box lid. Using the fuse box cover as a guide, locate fuse in location F52 in the center / right of the fuse box. Remove fuse F52 (20 amp fuse -cigarette lighter). **See Photo 5.**
7. Install the removed fuse into the new fuse-able link. Then plug into the fuse box, making sure the link is fully pressed into the fuse box. **See Photo 6.**
8. Connect the positive wire of the DRL wiring harness to the fuse-able link and crimp. Ground the negative wire to the negative battery post.



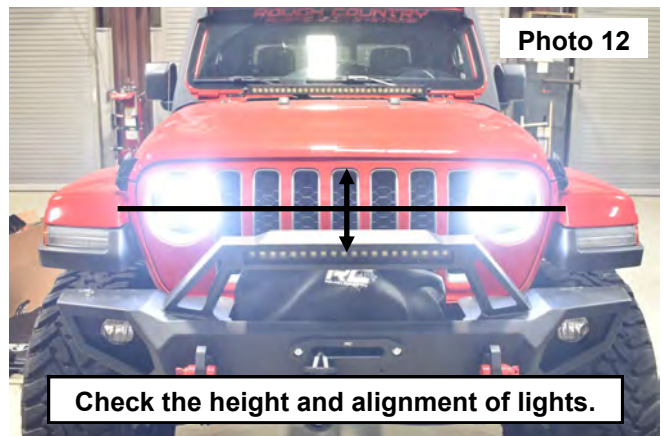
9. Identify the new passenger side head light. Align the tab and connect the plug to the DRL wiring harness. **See Photo 7.**
10. Locate the headlight in-line adaptor and connect the head light plug to the adaptor and then the OE harness to the adaptor. **See Photo 8.**



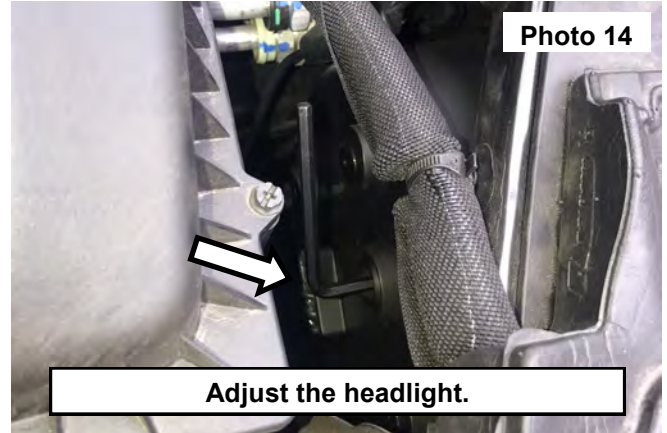
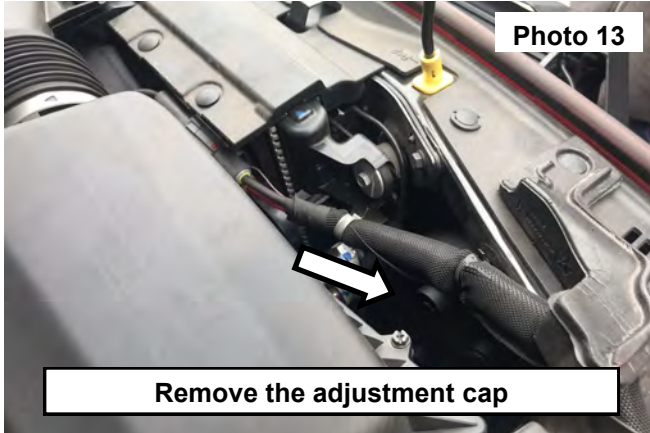
11. Tuck the wires out of harms way and install the headlight using the OE hardware. Tighten using a 10mm socket. **See Photo 9.**
12. Route the DRL wire across the vehicle to the drivers side out of harms way and repeat the headlight installation on the drivers side of the vehicle. Check all connections to insure proper function of the lights **See Photo 10.**



13. Install the grille by pressing in the clips at the bottom of the grille, then install the (6) clips in the top of the grille. **See Photo 11.**
14. Check the height and the alignment of the lights. Perform this in a dark room with the front of the vehicle facing 25 feet away from a wall or flat surface with the lights on the low setting. **See Photo 12.**



15. If adjustment is needed, remove the rubber adjustment cap from the back of the head light. **See Photo 13.**
16. Adjust the driver and passenger headlight to the desired angle. **See Photo 14.**
17. Install rubber adjustment cap.



By purchasing any item sold by Rough Country, LLC, the buyer expressly warrants that he/she is in compliance with all applicable, State, and Local laws and regulations regarding the purchase, ownership, and use of the item. It shall be the buyers responsibility to comply with all Federal, State and Local laws governing the sales of any items listed, illustrated or sold. The buyer expressly agrees to indemnify and hold harmless Rough Country, LLC for all claims resulting directly or indirectly from the purchase, ownership, or use of the items.

