



baja designs[®]
The Scientists of Lighting

Jeep JK S8/Onx6 Mount Kit



PN: 45-7500, 45-7503

Installation Manual

Baja Designs • 185 Bosstick Blvd. • San Marcos • CA • 92069

Phone 760.560.2252 • Fax 760.560.0383 • info@bajadesigns.com

www.bajadesigns.com



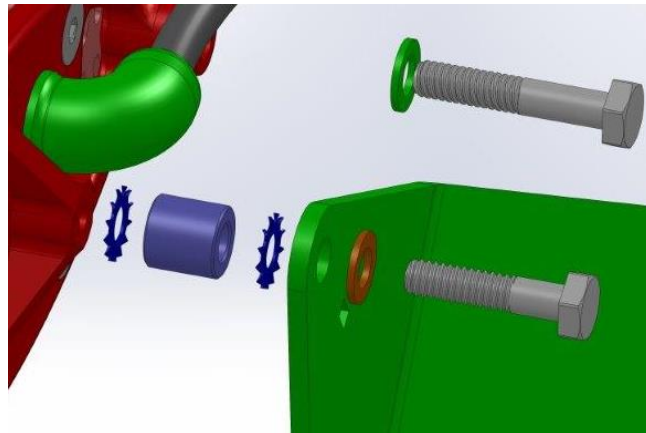
baja designs
The Scientists of Lighting

Bracket Installation:

1. Start by remove the factory A-Pillar bolts on the left and right side of your Jeep.
2. Next you will want to install the Baja Designs Jeep JK Mounting Brackets. These brackets are designed to use the factory bolts.



3. Once the brackets have been installed you can mount the S8 or OnX6 with the power cord located on the driver's side of the vehicle. **NOTE: For the OnX6 you will use the 1/2" spacers and 1/4-20x1.125 provided in the kit. (See Below)**



4. Remove the factory bolts securing the trim between the hood and windshield and route the power cord as shown in the four photos below.



baja designs
The Scientists of Lighting



The wiring harness includes our toggle switch w/led and momentary button for the “mode” function of the light. When the momentary button is pushed the light will toggle between medium and high. When the momentary button is held for two seconds the light will go into strobe mode. To get out of the strobe mode just push the button and the light will go back to full power.

If you decide to use the switches provided with this kit you will need to find a place in the dash area to drill two 15/32” holes for mounting purposes. Be certain there is adequate clearance for the body of the switch behind the mounting location

before drilling. If you choose to run our optional mode switch you will need to drill a 5/8” into the desired area. **Note: Installation of the mode switch is optional so if you do not want to**



baja designs[®]
The Scientists of Lighting

have a medium and strobe mode you will need to isolate the green and black wires from each other.

For the installation shown in these photos the customer provided us with a very clean switch panel made by Daystar.

<http://www.daystarweb.com/productlisting.php?make=Jeep&prodcats=Dash+Panels>

The Daystar panels are designed to accept the Carlisle style switches that most retailer automotive stores sell.

1. Start by routing our wiring harness with the fuse block side along the firewall as shown in the two pictures below.
2. Follow the factory wiring harness along the inner fender on the driver's side and mount the relay to the factory ground location by removing the 10mm nut located in the engine bay.



baja designs
The Scientists of Lighting



e

3. Once you have mounted the relay route the 3 pin connector along the factor harness and plug it into the power cord from the light.

There is a bypass that allows you to get the switch wires inside the cab. This can be done by removing the plastic cover on the end of the dash which is located on the driver's side.

4. Take a wire coat hanger and push through the foam from the cab side to the outside. Use electrical tape and secure the harness to the coat hanger then pull the harness through the foam with the coat hanger like the photos shown below.



baja designs
The Scientists of Lighting



5. Once you have the harness inside the cab route the wires under the dash to the area where you are mounting the switches. **Note: Use zip-ty's to secure the harness.**



6. The **BLACK** wire goes to the terminal labeled "**GROUND**" on the switch. The **BLUE** wire goes to "**ACC.**" The **BROWN** wire goes to "**POWER.**" On the mode switch, polarity is unimportant for the green and black wires.



baja designs®
The Scientists of Lighting

7. You will notice a ring terminal on the other end of the black wire that is shared by the momentary and the toggle switch. This needs to be attached to a metal mounting bolt under the dash. Make sure the bolt is chassis grounded. This ground is for the LED light in the toggle switch as well as the ground for the mode function of the momentary button.

8. Before you finish the installation turn your S8 or OnX on to verify the system is working properly. Once you are satisfied with your work use the provided zipty's to secure the harness.