

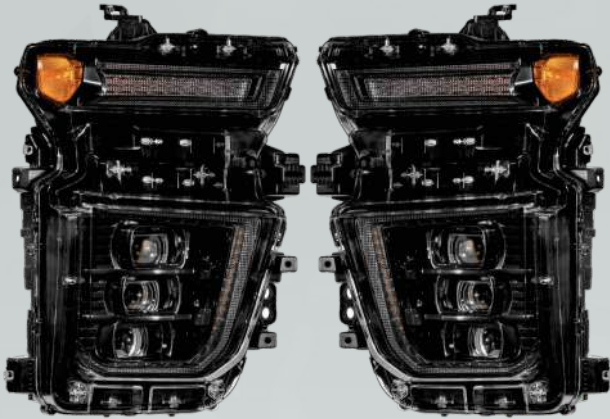


THE AUTOMOTIVE LIGHTING BENCHMARK

2020+ SILVERADO HD XB LED & XB HYBRID LED HEADLIGHTS INSTALL GUIDE

WARNING: By reading this document, you agree it is only to be used as an educational guide. Morimoto Lighting nor its dealers make guarantees on any finished results, nor are they to be held responsible for any damage, misuse, or personal injuries. If you are unable to clearly understand and adapt the information below, professional installation is recommended.

PACKAGE CONTENTS



XB LED

OR



XB HYBRID LED

2X HEADLIGHT ASSEMBLIES



1X FUSE TAP / DRL HARNESS

TOOLS REQUIRED

T20 TORX DRIVER
T15 TORX DRIVER
10MM SOCKET OR WRENCH
8MM SOCKET

7MM SOCKET OR WRENCH
#2 PHILIPS SCREWDRIVER
PICK
PANEL PRY TOOL

IMPORTANT: If your vehicle is equipped with anything but OEM turn signals (full assemblies, LED bulbs, or otherwise) in the tail lights or elsewhere: You may experience a hyper flash and/or problems with the sequential signal setting on these headlights. This is not a defect in the headlight, and caused by un-matched impedance with your original vehicle settings.

INSTALLATION PROCESS

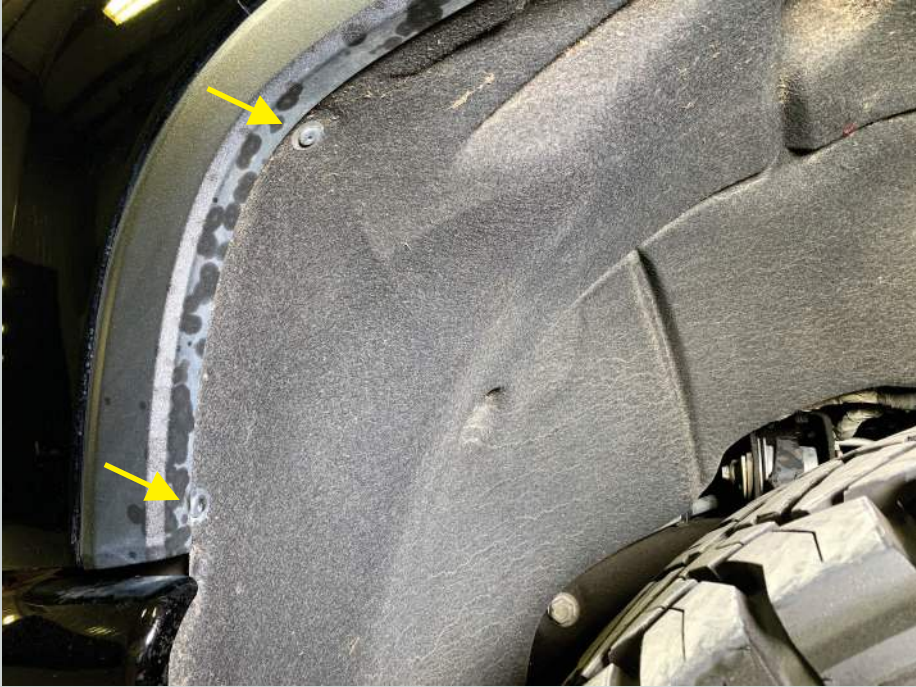
1. Remove the two (2) T15 Torx bolts holding the hood release arm on the latch, then slide the release arm off and set aside.



2. Remove the nine (9) push-clips from the top cover, then remove the cover and set aside.



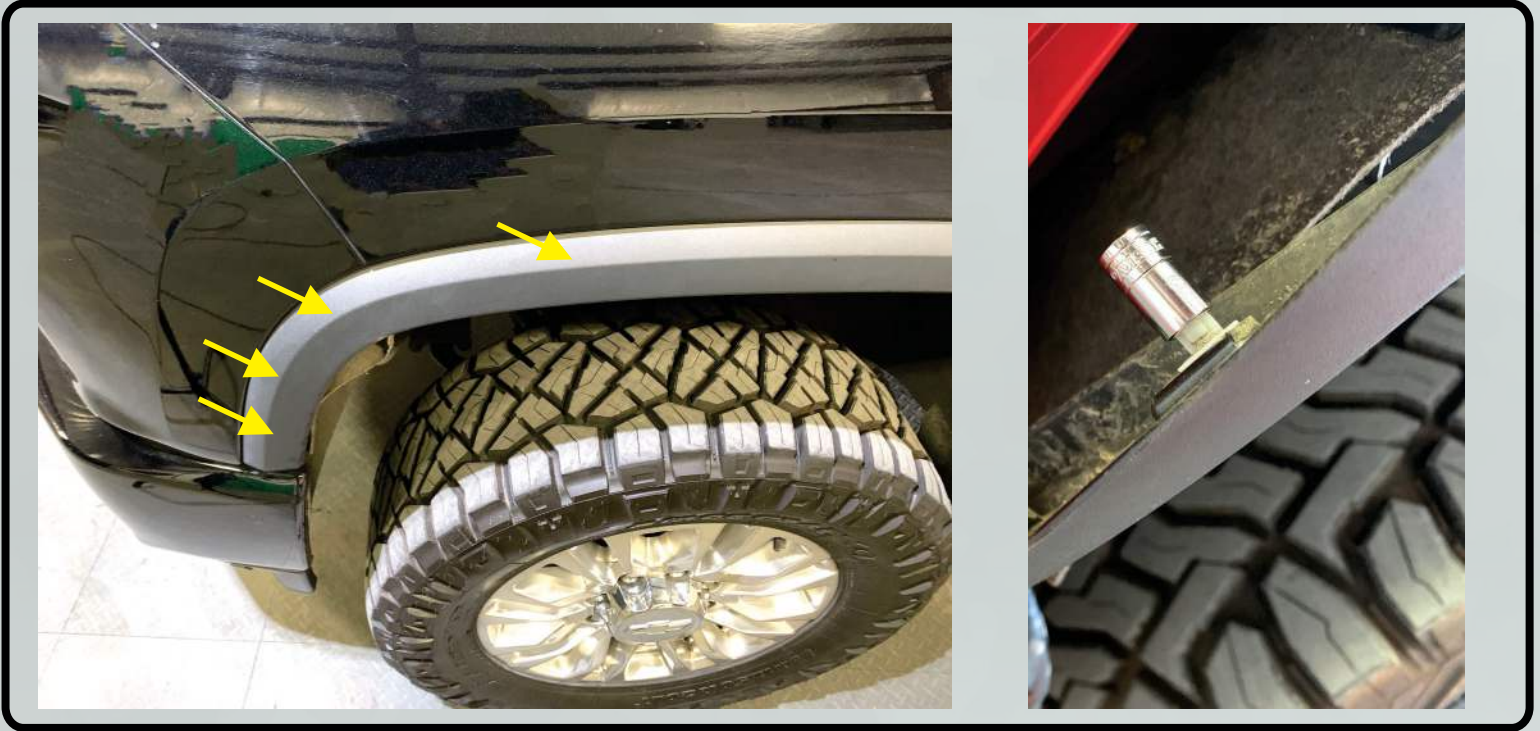
3. Remove the two (2) T15 Torx bolts from each fender liner and set aside.



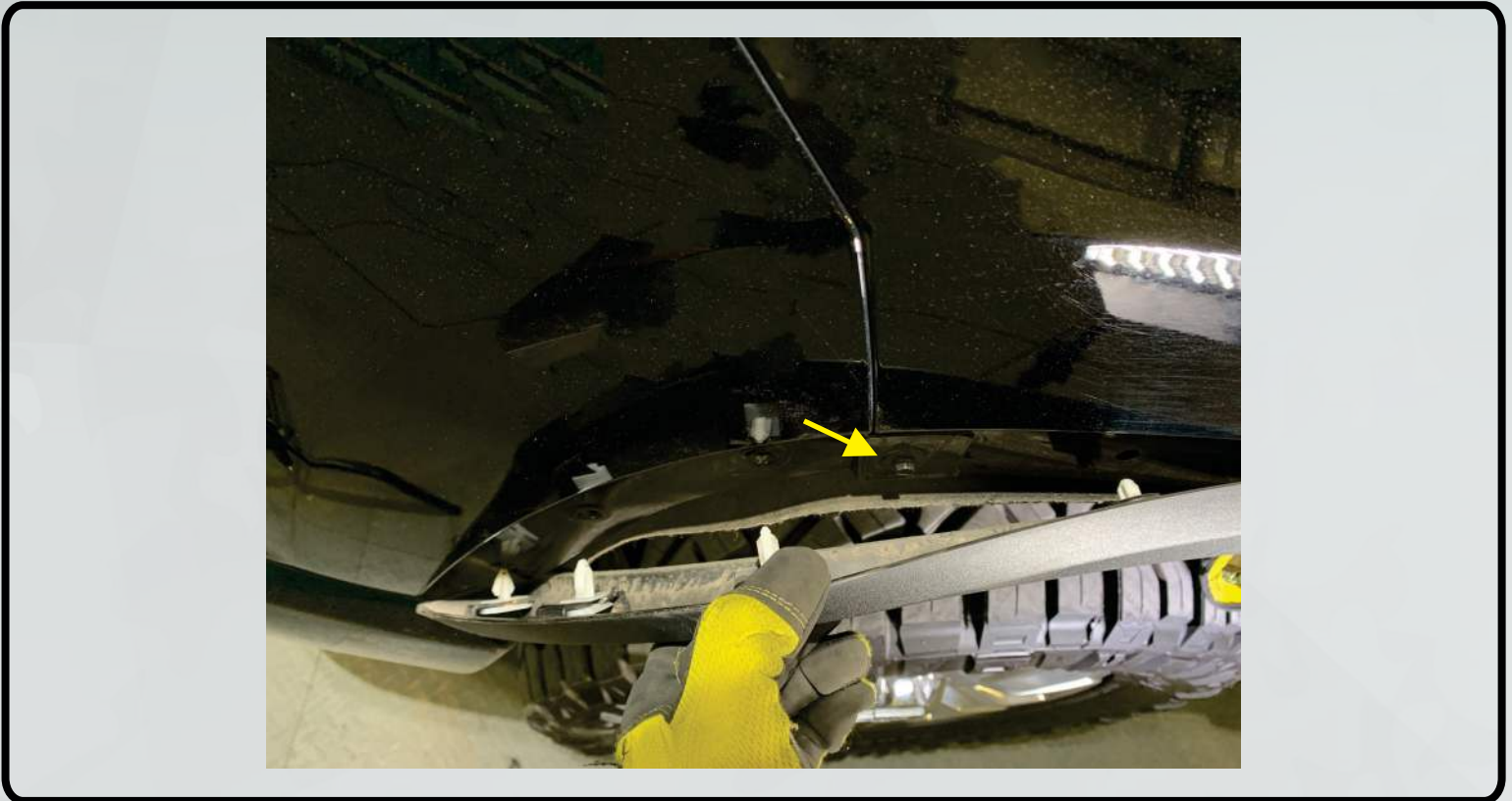
4. Remove the T15 Torx bolt from the top of each fender liner and set aside.



5. Using an 8mm socket, push on the rear of the four plastic clips of the fender flare to release them, then pull the fender flares away from the fender. See step 6 for clip locations.



6. Remove these 7mm fender bolts and set aside.



7. Pull the fender piece out away from the fender (towards yourself). It is held on with push clips.



8. If you have this trim level truck, the two side pieces in step 7 are connected via the middle piece. Once both sides are un-clicked, the entire assembly pulls forward off of the truck and can be set aside.



9. For this trim level truck, these pieces simply remove from the vehicle and can be set aside.

For more information on this process, see this helpful video: <https://www.youtube.com/watch?v=fOPIFW4DvKI>



10. Remove the six (6) 10mm bolts holding on the grille assembly.



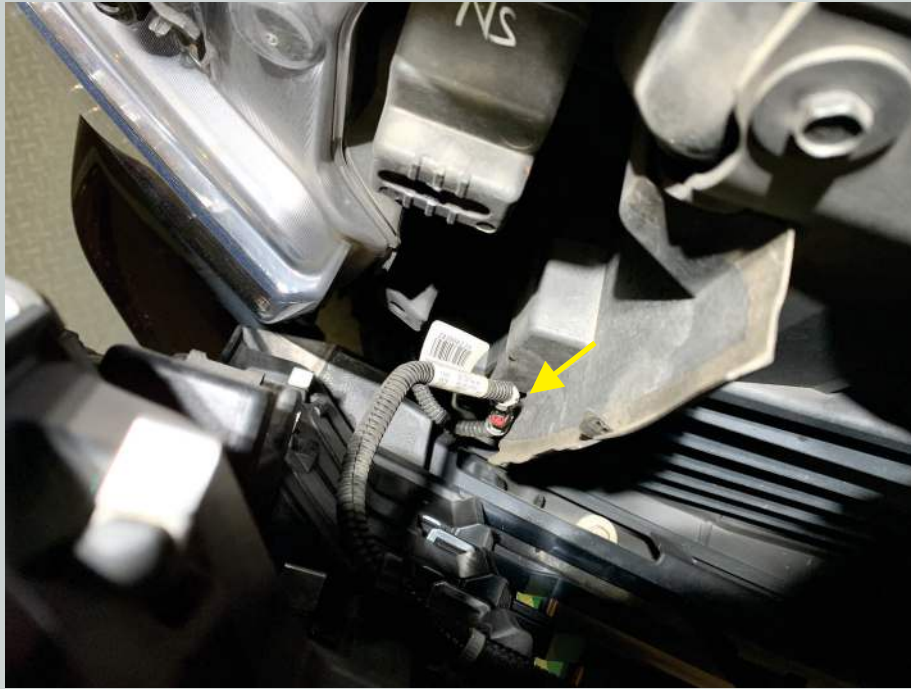
11. Pry up on the edge of the grille to release the plastic clips.



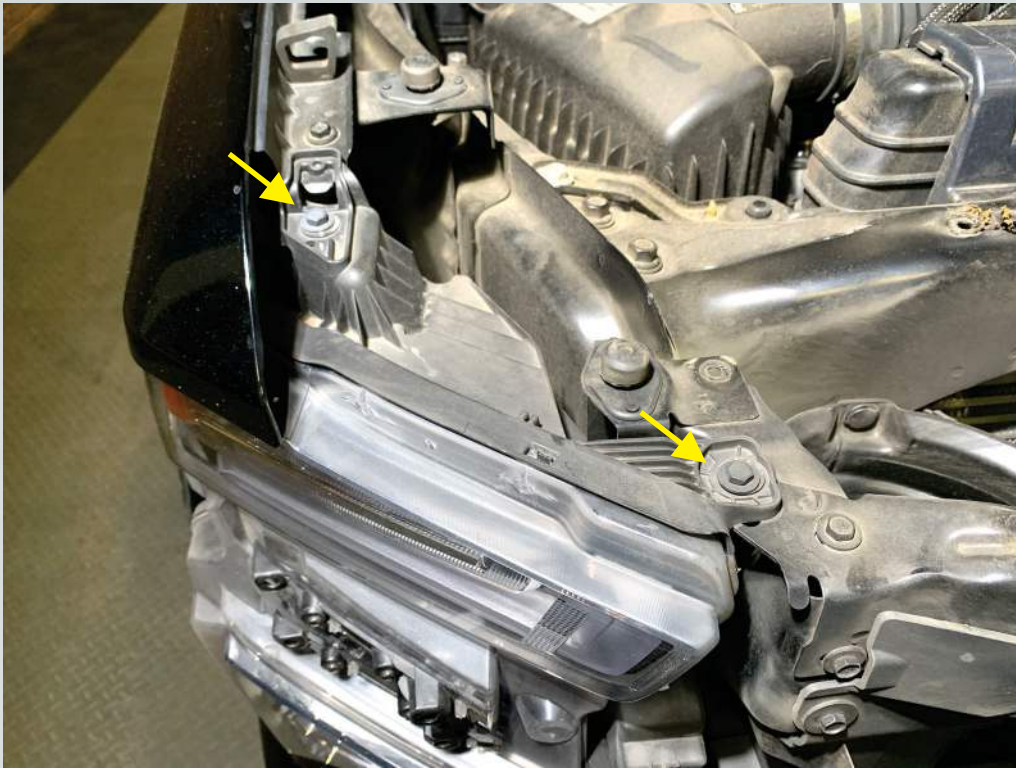
12. Pry away the grille from the headlight on each side of the truck.



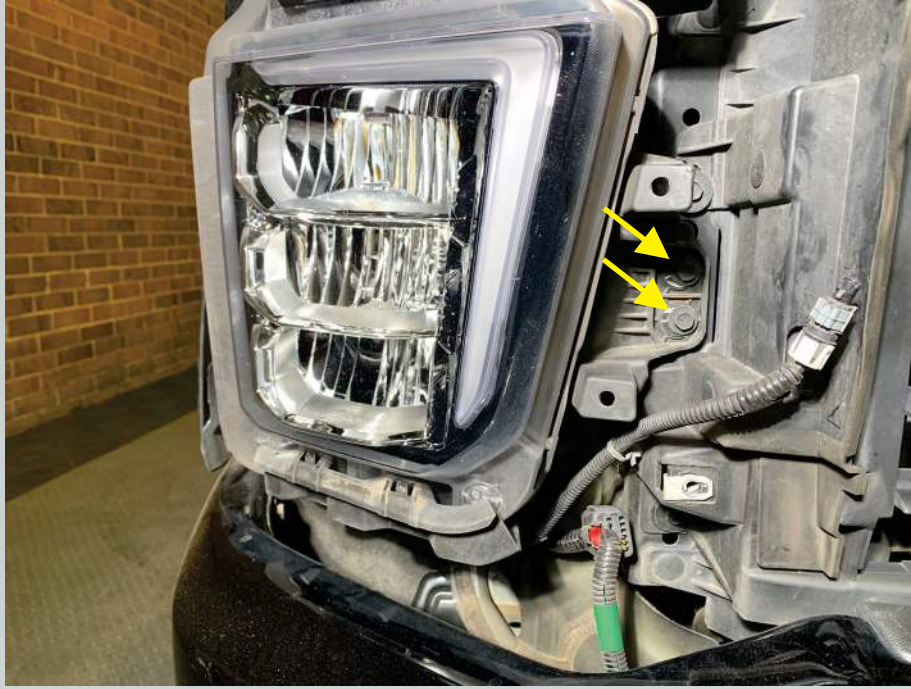
13. Unplug the camera, remove the grille assembly, and set aside.



14. Remove the two (2) 10mm bolts from each headlight and set aside.



15. Remove the two (2) 10mm bolts from each headlight and set aside.



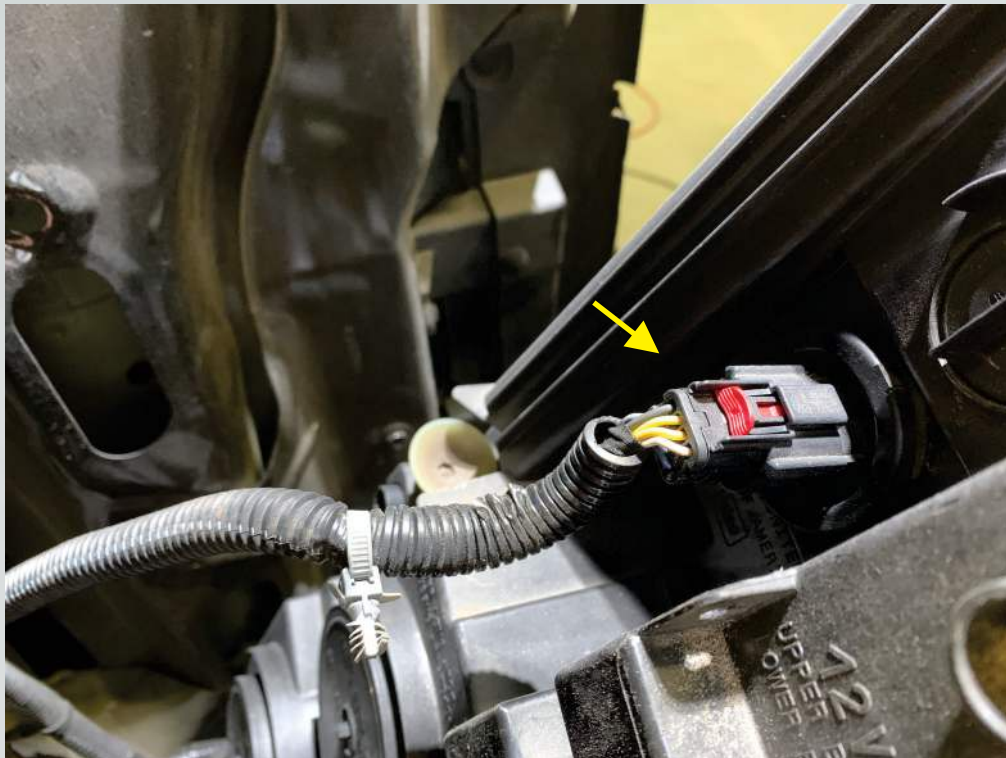
16. Remove the two (2) 10mm bolts from each headlight and set aside.



17. Pry up on this tab to release the headlight.



18. Unplug the headlight connector, remove the headlight, and set aside.



19. Remove the four (4) T20 Torx screws, remove the headlight brackets, and transfer to the Morimoto lights.



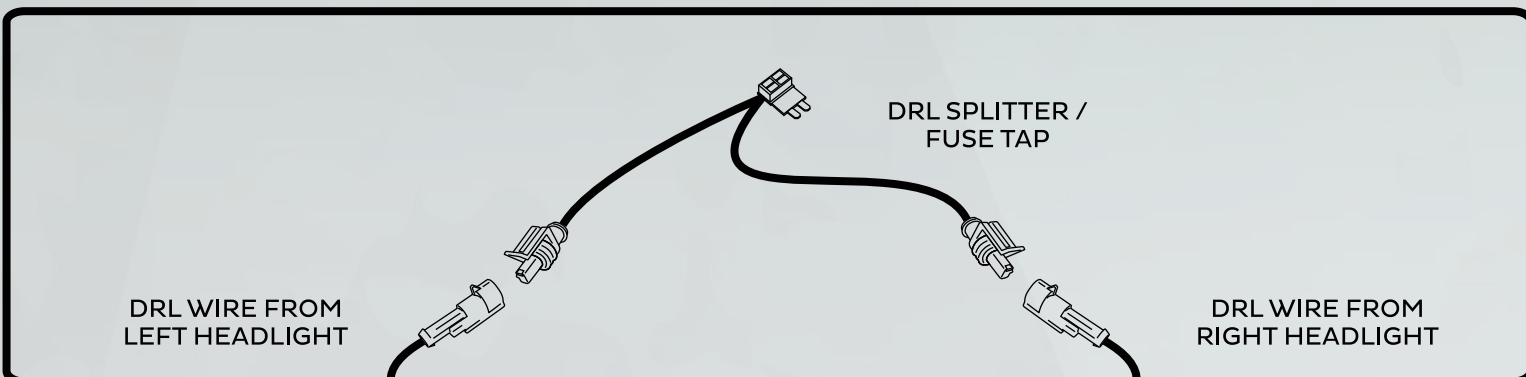
20. Remove the two (2) T20 Torx screws, remove the brackets, and transfer to the Morimoto lights.



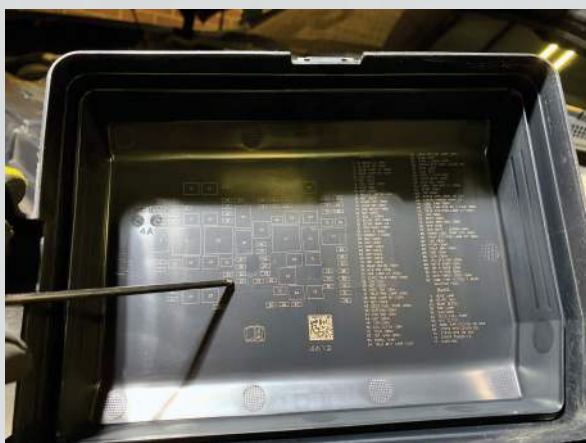
21. XB Hybrid LED headlights only: Turn the turn signal bulb socket counter-clockwise, remove the bulb, and transfer to the Morimoto headlights.



22. Route the DRL fuse tap harness across the radiator support panel.



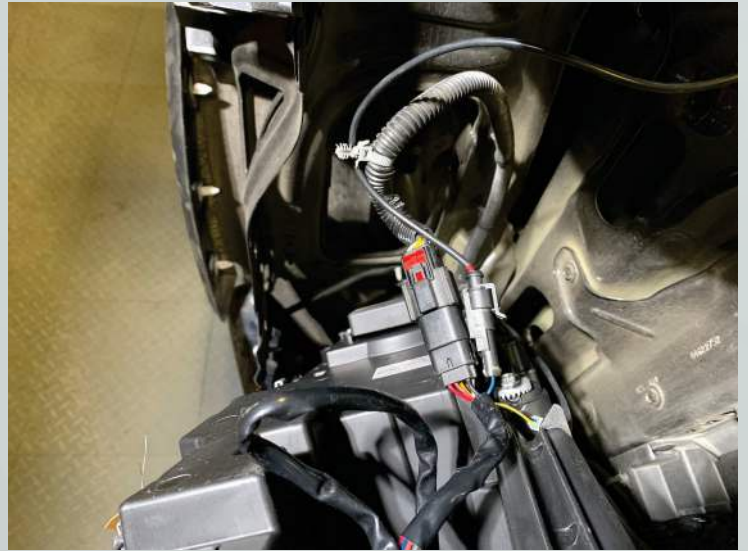
23. Remove the fuse from position #40 and replace with the fuse tap harness.



24. Connect headlights to truck and DRL wiring.



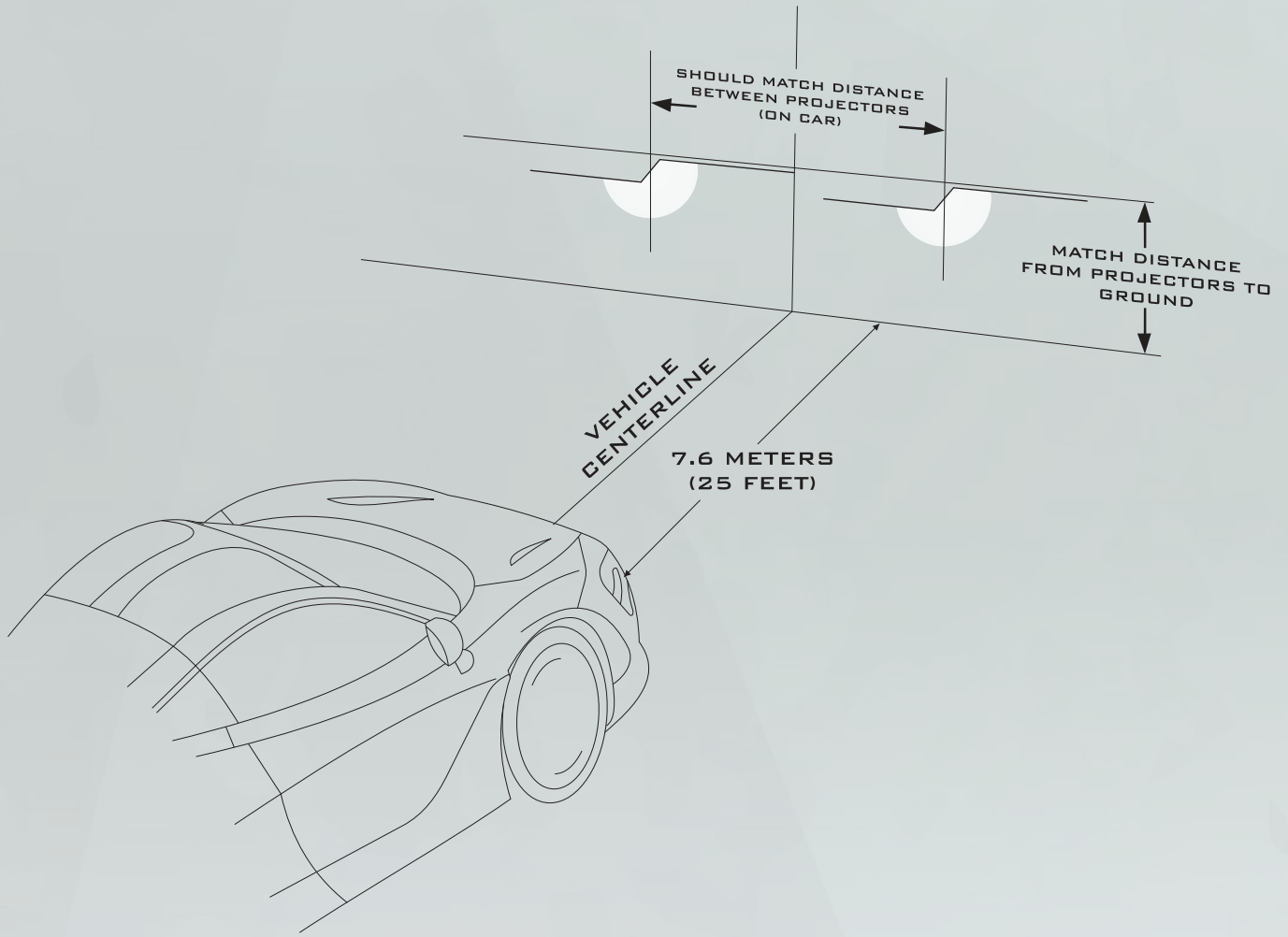
XB LED



XB HYBRID LED

25. Install your new Morimoto headlights in the reverse sequence from above. After the lights are fully bolted in, be sure to aim them (see below) before finishing the rest of the installation. The vertical adjuster can be accessed from the top with the headlight installed. Refer to the aiming standards on the next page when adjusting your lights.





-END-