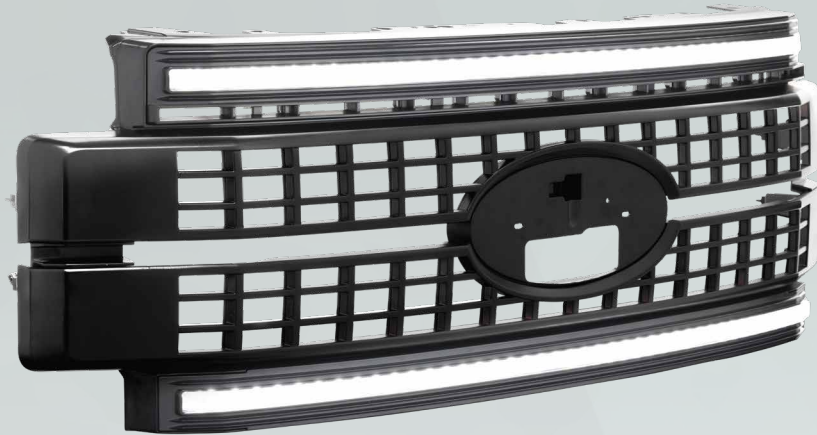


# 17-19 SUPERDUTY XB LED GRILLE INSTALL GUIDE

**WARNING:** By reading this document, you agree it is only to be used as an educational guide. Morimoto Lighting nor its dealers make guarantees on any finished results, nor are they to be held responsible for any damage, misuse, or personal injuries. If you are unable to clearly understand and adapt the information below, professional installation is recommended.

## PACKAGE CONTENTS



1X XBG GRILLE



1 X FUSE TAP / DRL HARNESS



1X HALOGEN ADAPTER HARNESS



1X OEM LED ADAPTER HARNESS

# 2017-2019 FORD SUPERDUTY



## TABLE OF CONTENTS

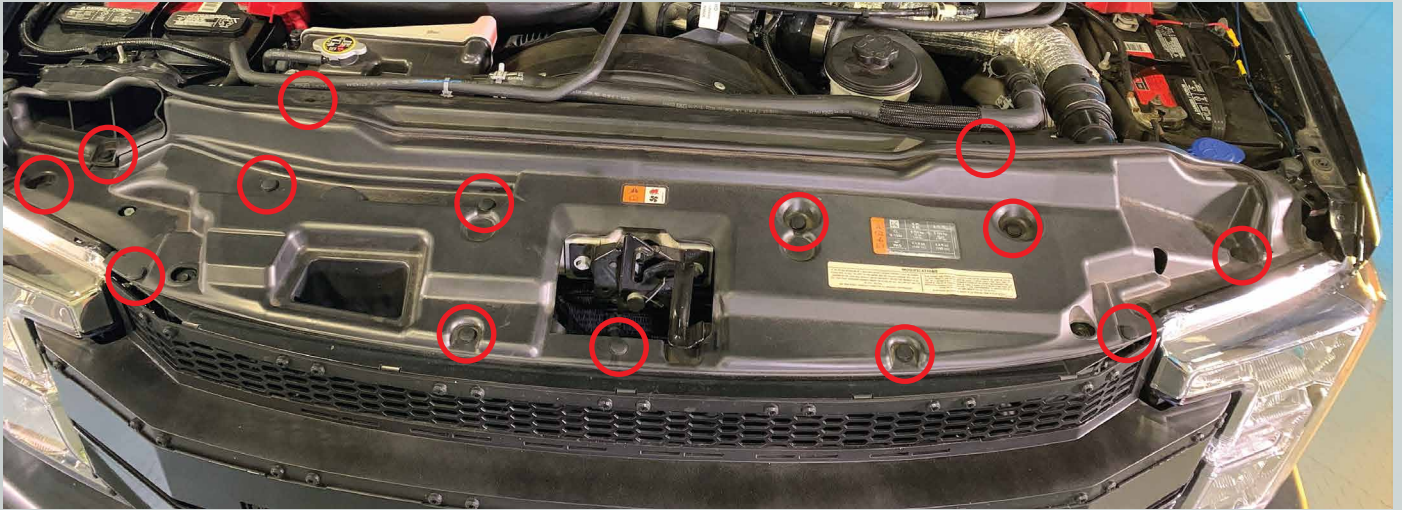
- INSTALLATION PROCESS ..... PAGE 3
- FRONT TRIM REMOVAL INSTRUCTIONS ..... PAGE 13

## REQUIRED TOOLS

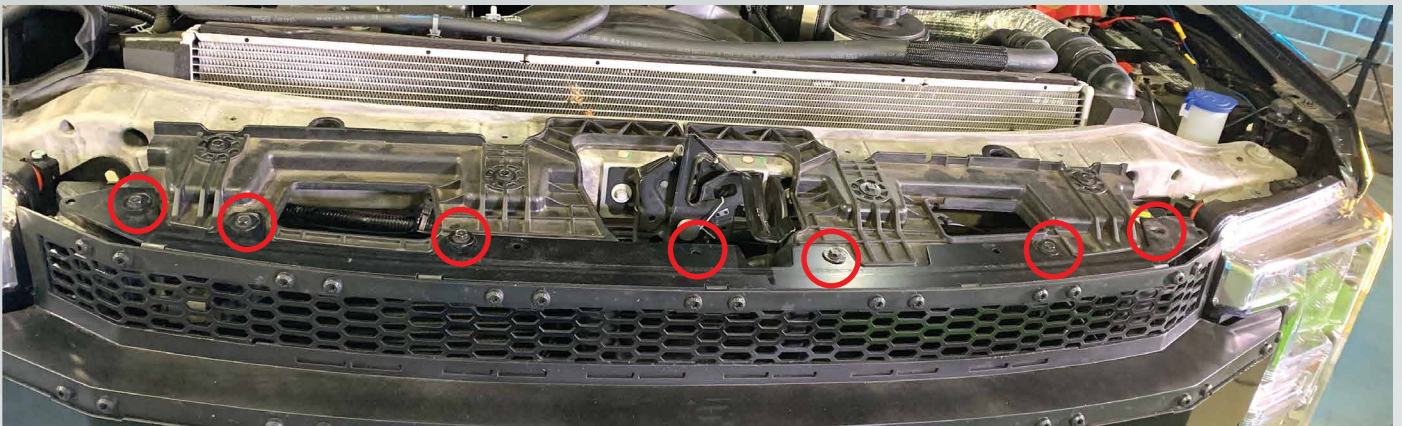
- RATCHET
- 10MM SOCKET
- FLAT HEAD SCREWDRIVER OR TRIM REMOVAL TOOL
- PHILIPS HEAD SCREWDRIVER
- NEEDLE NOSE PLIERS

# INSTALLATION PROCESS

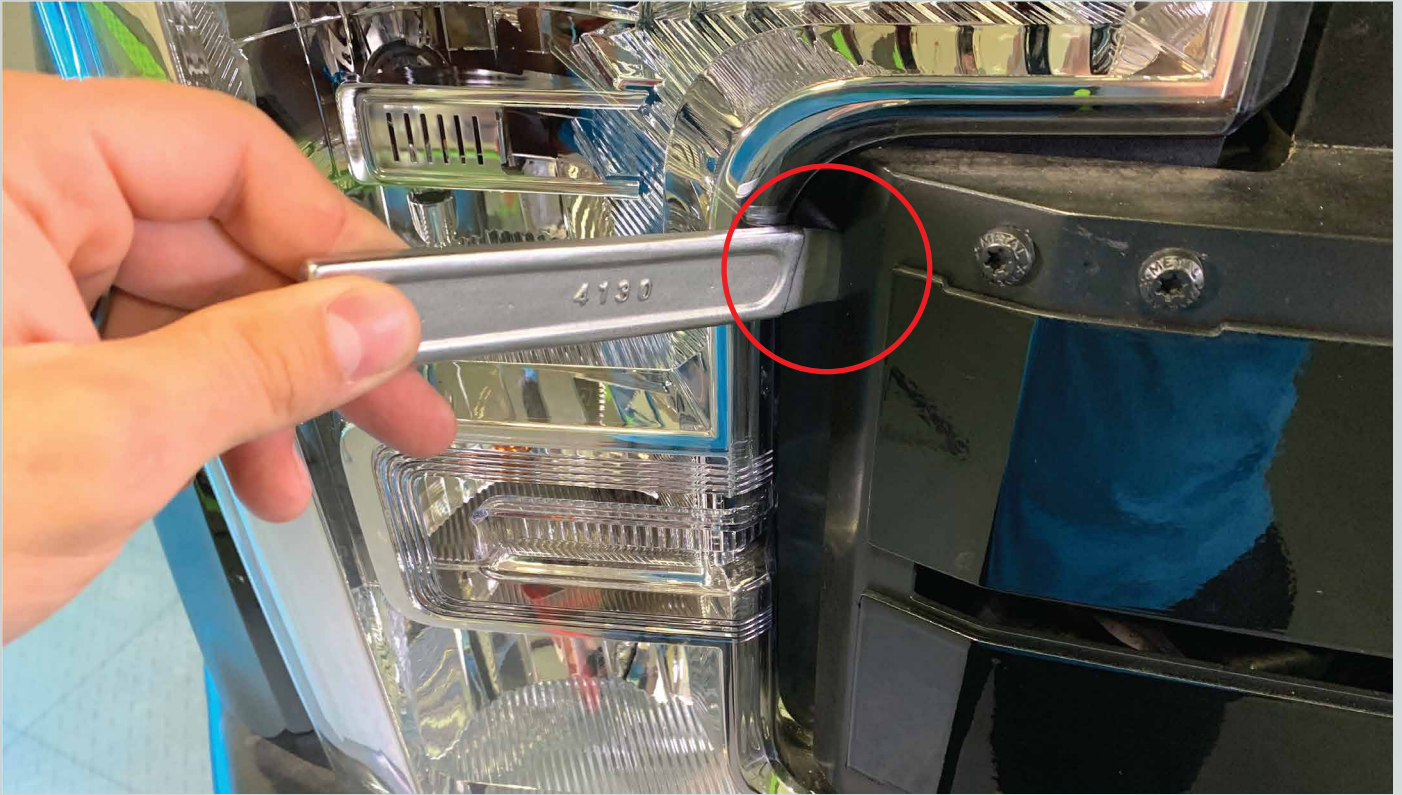
1. Remove the fourteen (14) plastic clips holding on the grille cover. Do this by prying up on the top part of the clip then pry the bottom part up and out of the hole.



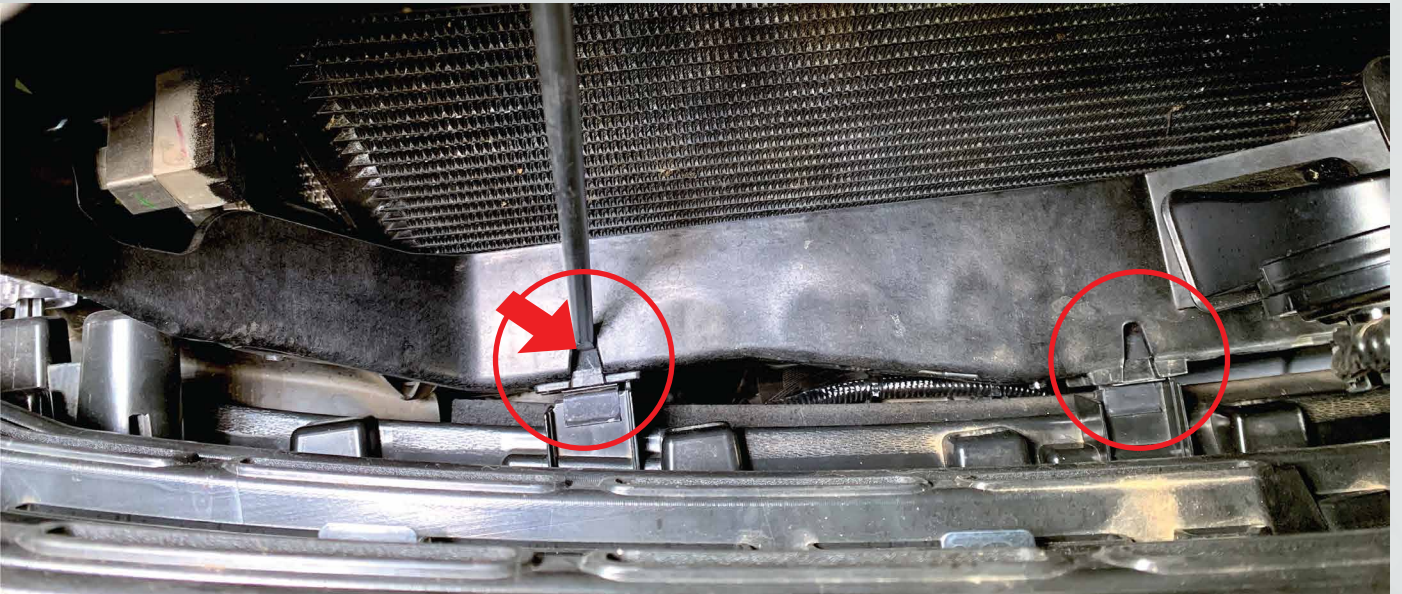
2. Remove seven (7) 10mm bolts from the top of the grille. If you have a front camera, then unplug two (2) connectors by the hood



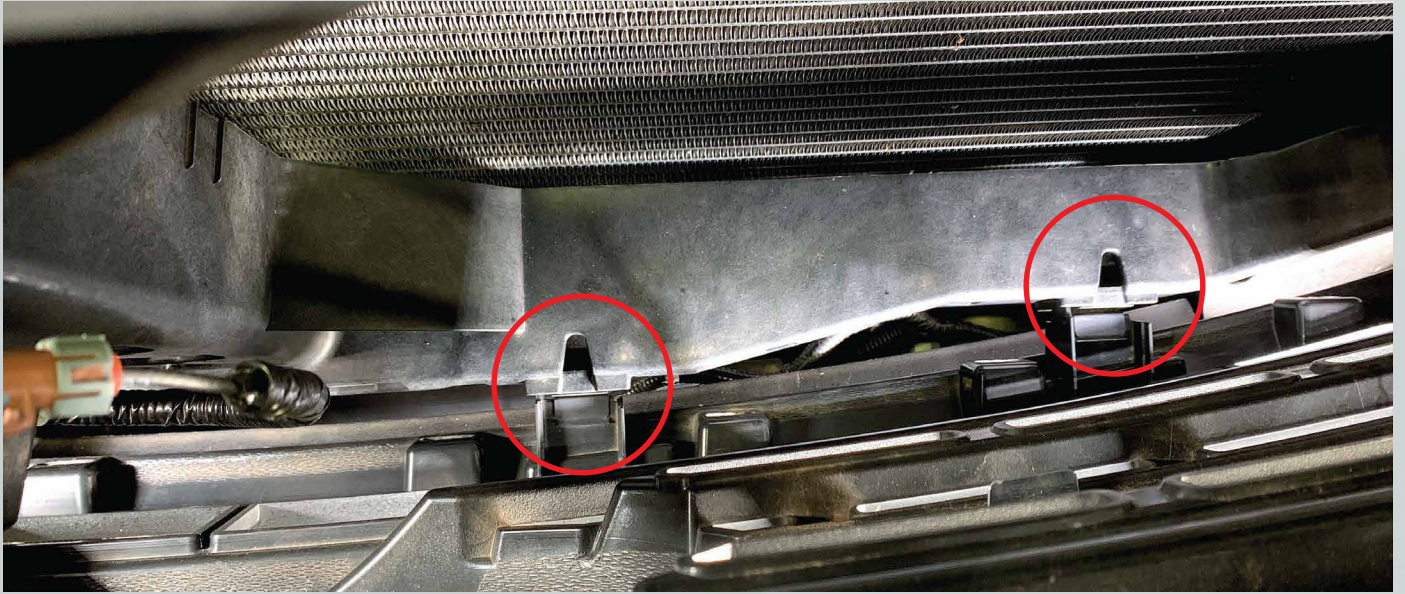
3. Pry forward under the sides of the grille, then pull the top of the grille forward.



4. With the grille tilted forward, get a long flat head screwdriver and press down on these two (2) metal clips to release them. After releasing each clip, pull the grille away from the truck with light pressure so the clips don't lock back into place.



5. Also release these two (2) metal clips on the bottom of the grille. If you have a front camera see step #6. If you don't have a front camera, pull the grille off of the truck and set it aside.



6. If you have a front camera, unplug the connector on the camera by pressing the release tab and sliding the connector off. Then disconnect the washer fluid hose fitting by prying up on one side of the locking collar then slide the hose fitting off (A few drops of washer fluid may come out.). Now pull the grille off of the truck and set it aside.



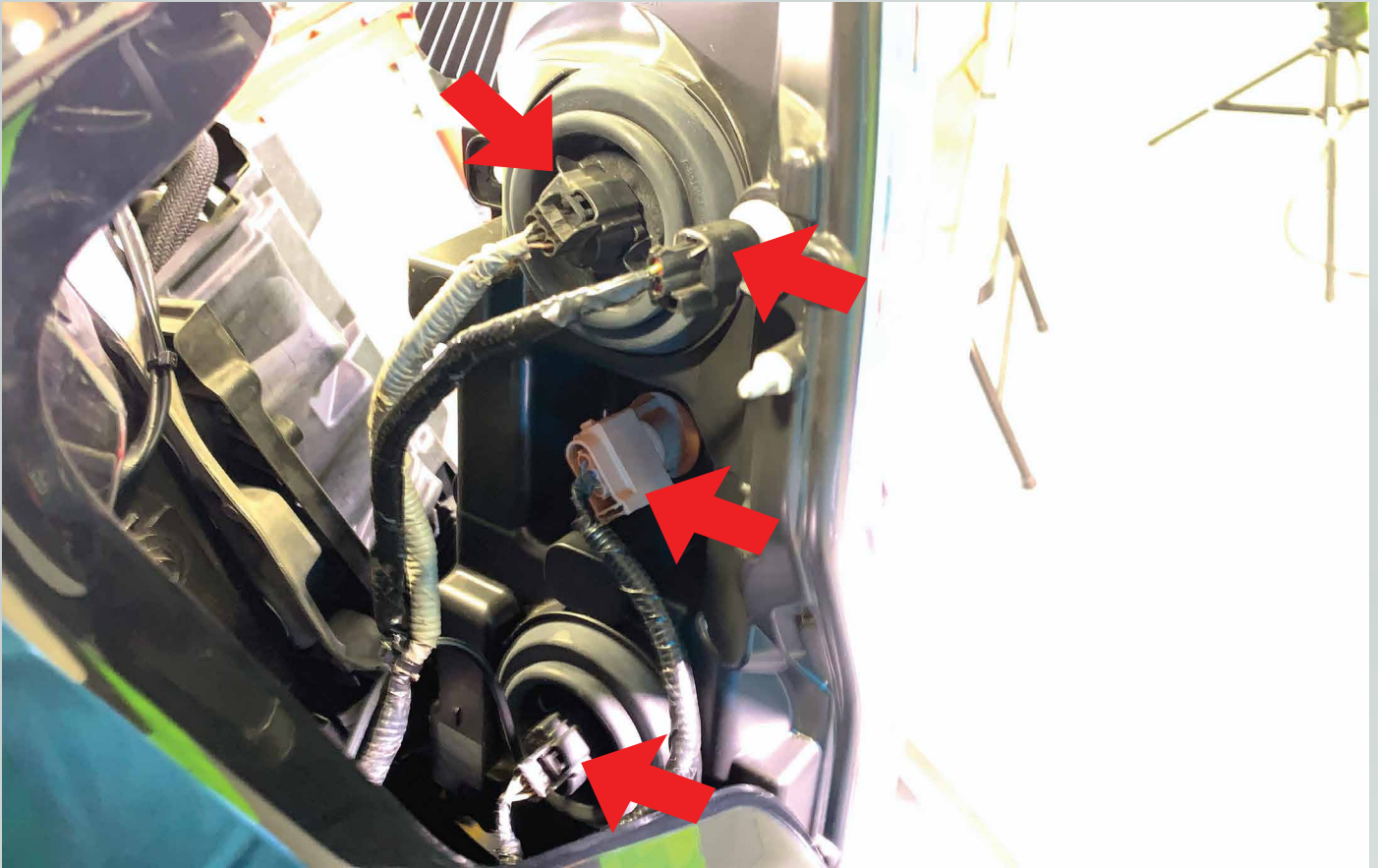
7. Remove one (1) 10mm bolt from the passenger side headlight, it is located between the fender and bumper. Then remove two (2) 10mm bolts from the inner side of the passenger side headlight.



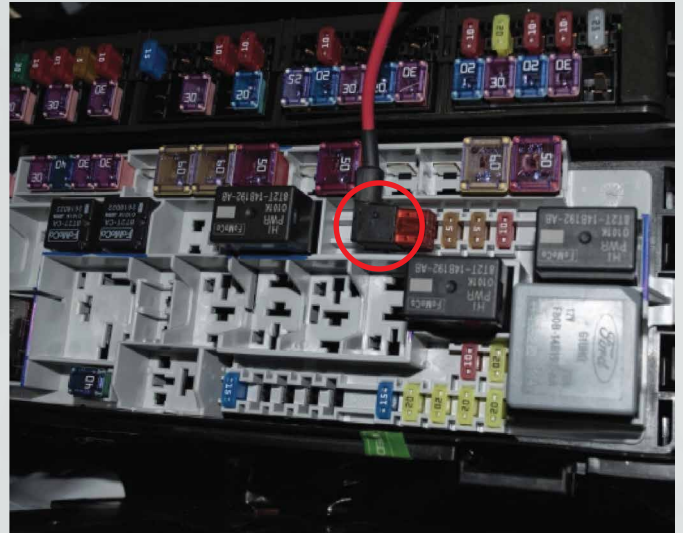
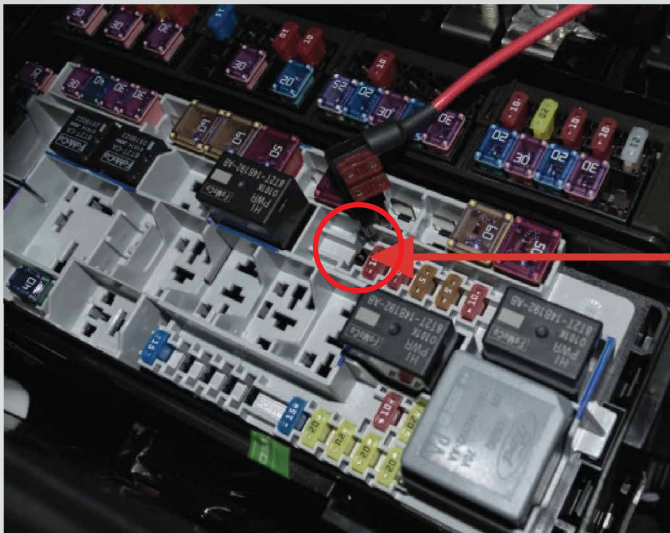
8. Remove one (1) 10mm bolt from the top of the passenger side headlight. Pull the headlight forward to release the headlight from the truck.



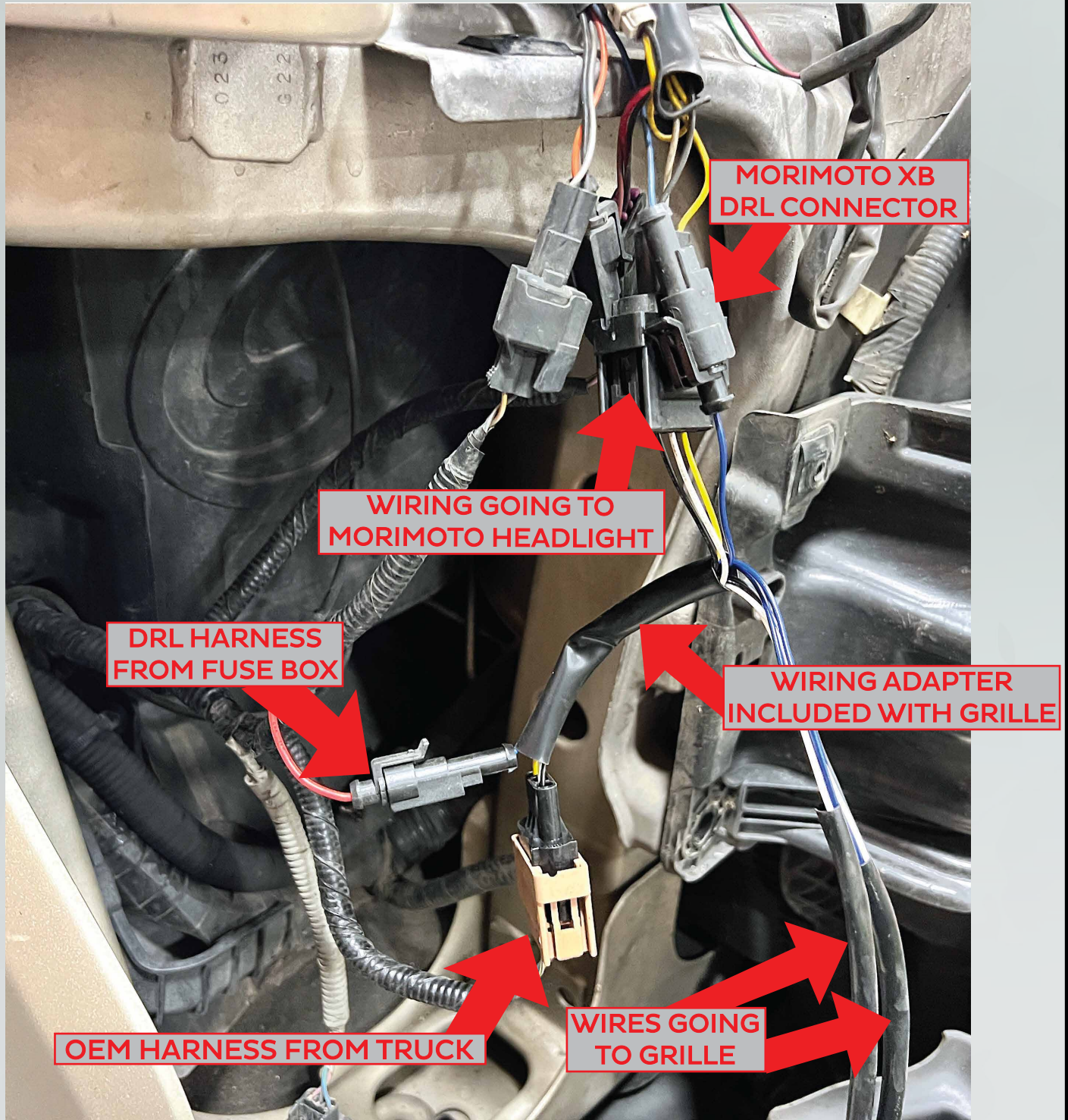
9. Disconnect these four connectors by pressing the release tabs and pulling the connectors off.



10. Locate the fuse box under the hood on the passenger side, by the firewall and remove fuse #35. Find the included fuse tap harness and plug it in place of the fuse you just removed. Route the end of the harness to the passenger side headlight area. (IF YOU ARE USING MORIMOTO HEADLIGHTS, USE THE FUSE TAP HARNESS THAT IS INCLUDED WITH THE HEADLIGHTS)

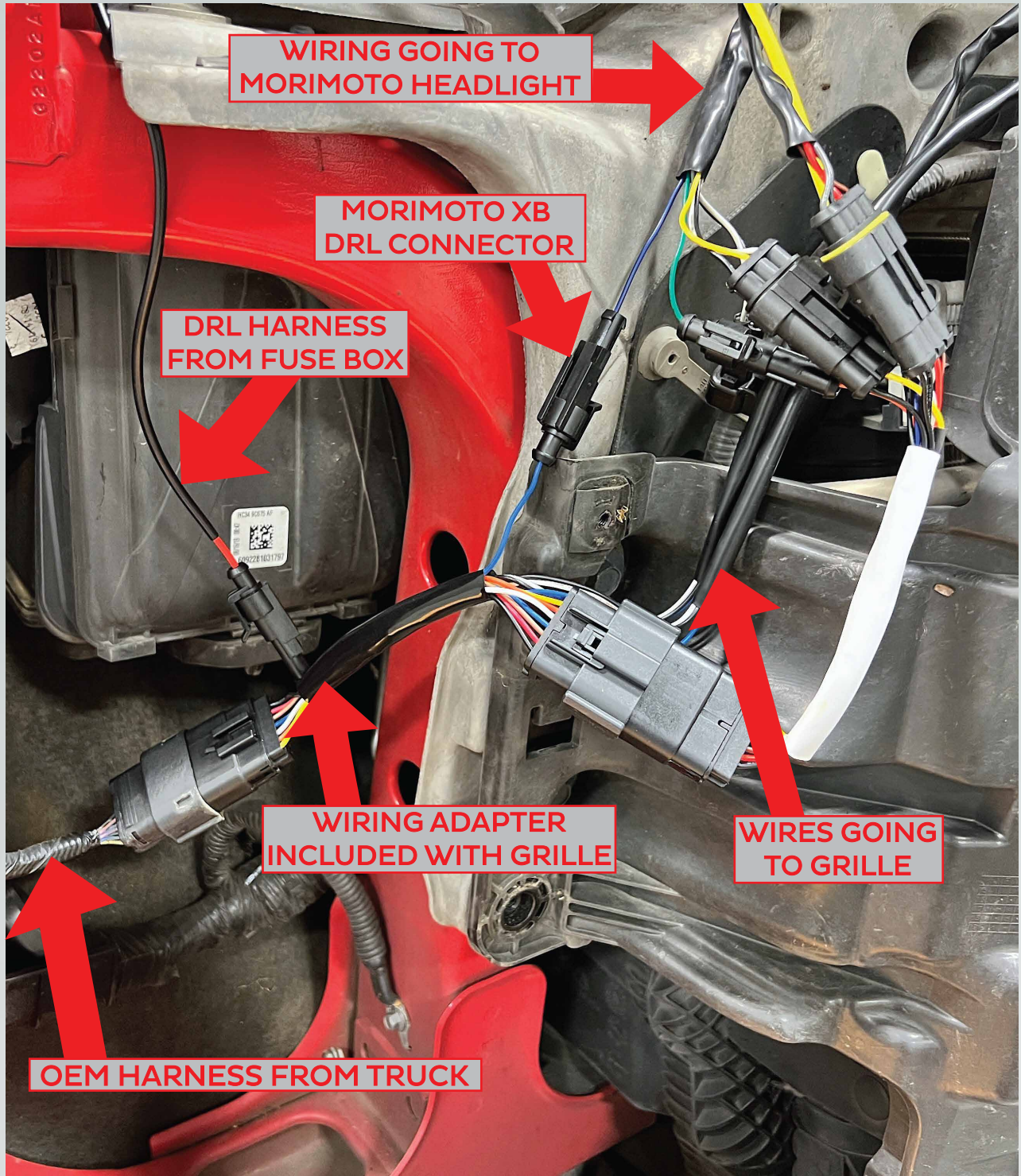


11. Locate the included headlight tap wiring. Plug it inline between your truck wiring and the headlight wiring. Route the wiring with the two (2) connectors, that go the grille, toward the grille area. Reinstall the headlight.

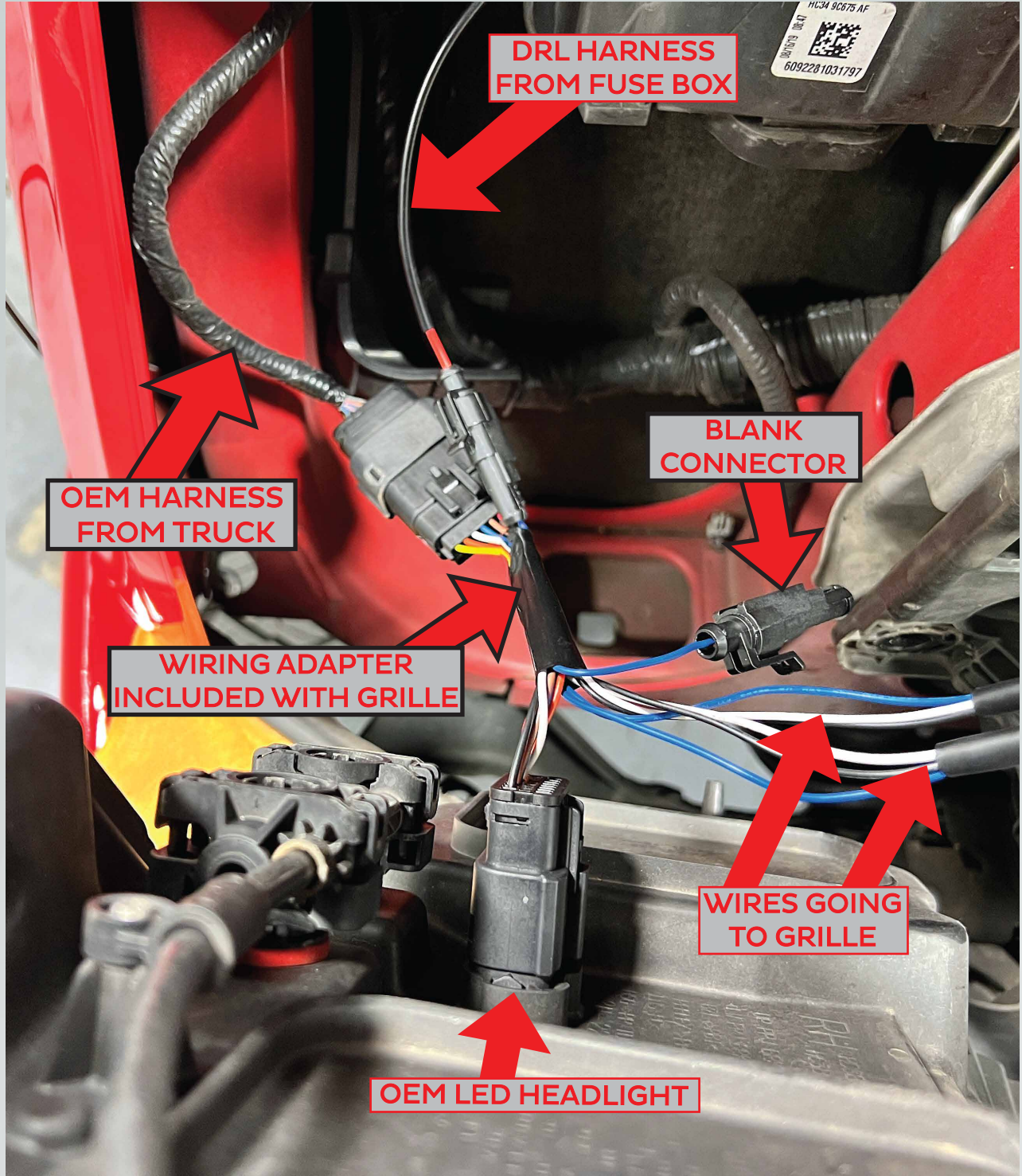


## OEM HALOGEN TRUCK USING MORIMOTO XB HEADLIGHTS





## OEM LED TRUCK USING MORIMOTO XB HEADLIGHTS



**OEM LED TRUCK USING  
OEM LED HEADLIGHTS**

10. Lay your OEM grille down on a soft surface and remove the three (3) 10mm nuts on the back of the FORD emblem and remove the emblem. And install it into your Morimoto grille (HAND TIGHTEN ONLY).



11. Take your Morimoto grille and set it onto the bumper. Plug in the two (2) XBG connectors into the connectors that are run from the back of the passenger side headlight (these 2 connectors are interchangeable). Tuck the wiring behind the headlight so it's not in the way of the grille mounting to the truck.



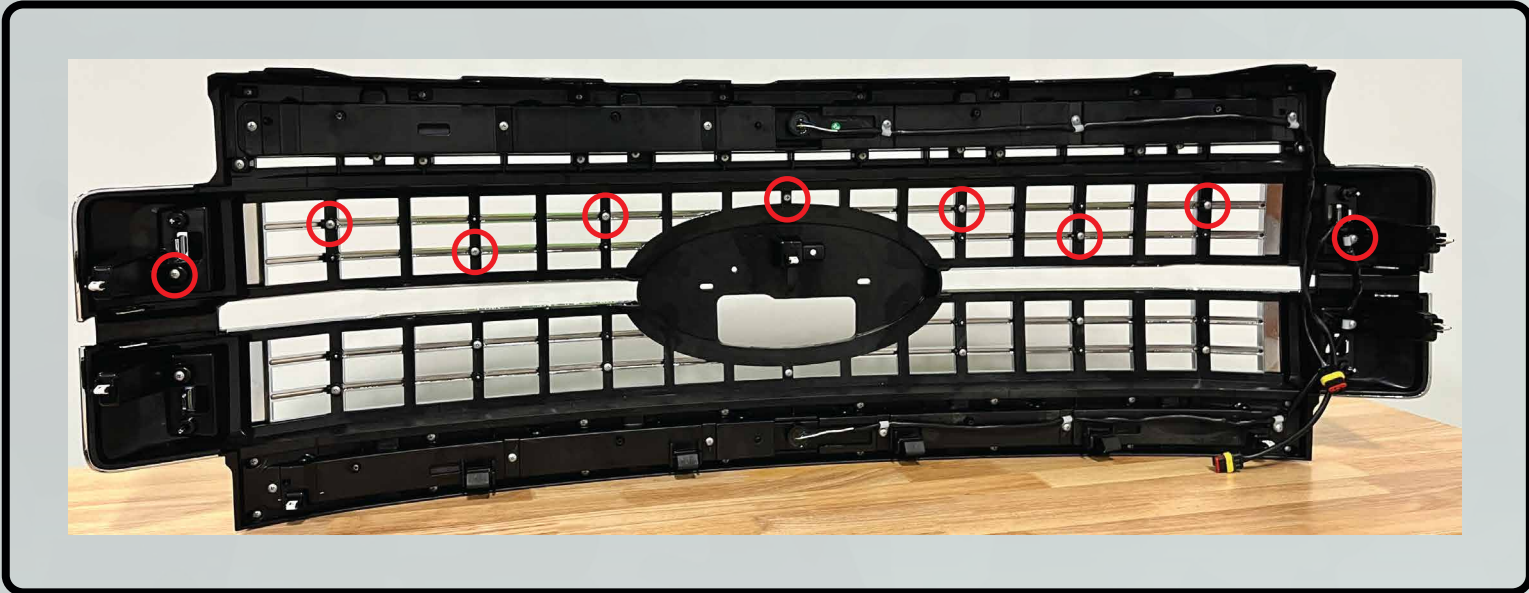
12. Set the grille into it's resting place. Plug in the OEM wiring at the top of the grille (if you have a front camera).
13. Turn the truck on and test all of the functions.
14. Reassemble the truck in the opposite order of removal.

**ENJOY YOUR NEW MORIMOTO XBG GRILLE!**

# FRONT TRIM SWAP INSTRUCTIONS

(FOR REMOVING THE PAINTABLE TRIM PIECES TO GET PAINTED OR WRAPPED)

1. Remove these nine (9) philips head screws to remove the top trim piece.



2. Remove these nine (9) philips head screws to remove the bottom trim piece.



**WHEN REINSTALLING THE SCREWS, HAND TIGHTEN ONLY!**