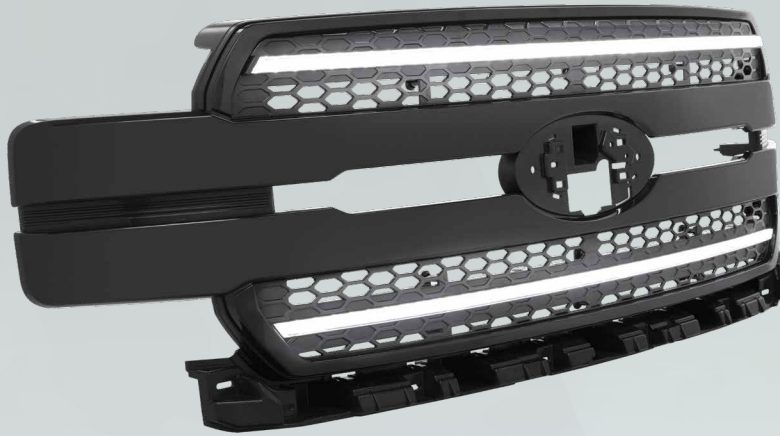


2018-2020 F150 XB LED GRILLE INSTALL GUIDE

WARNING: By reading this document, you agree it is only to be used as an educational guide. Morimoto Lighting nor its dealers make guarantees on any finished results, nor are they to be held responsible for any damage, misuse, or personal injuries. If you are unable to clearly understand and adapt the information below, professional installation is recommended.

PACKAGE CONTENTS



1 X XB6 GRILLE



1 X FUSE TAP / DRL HARNESS



1 X HALOGEN ADAPTER HARNESS



1 X OEM LED ADAPTER HARNESS

2018-2020 FORD F150



TABLE OF CONTENTS

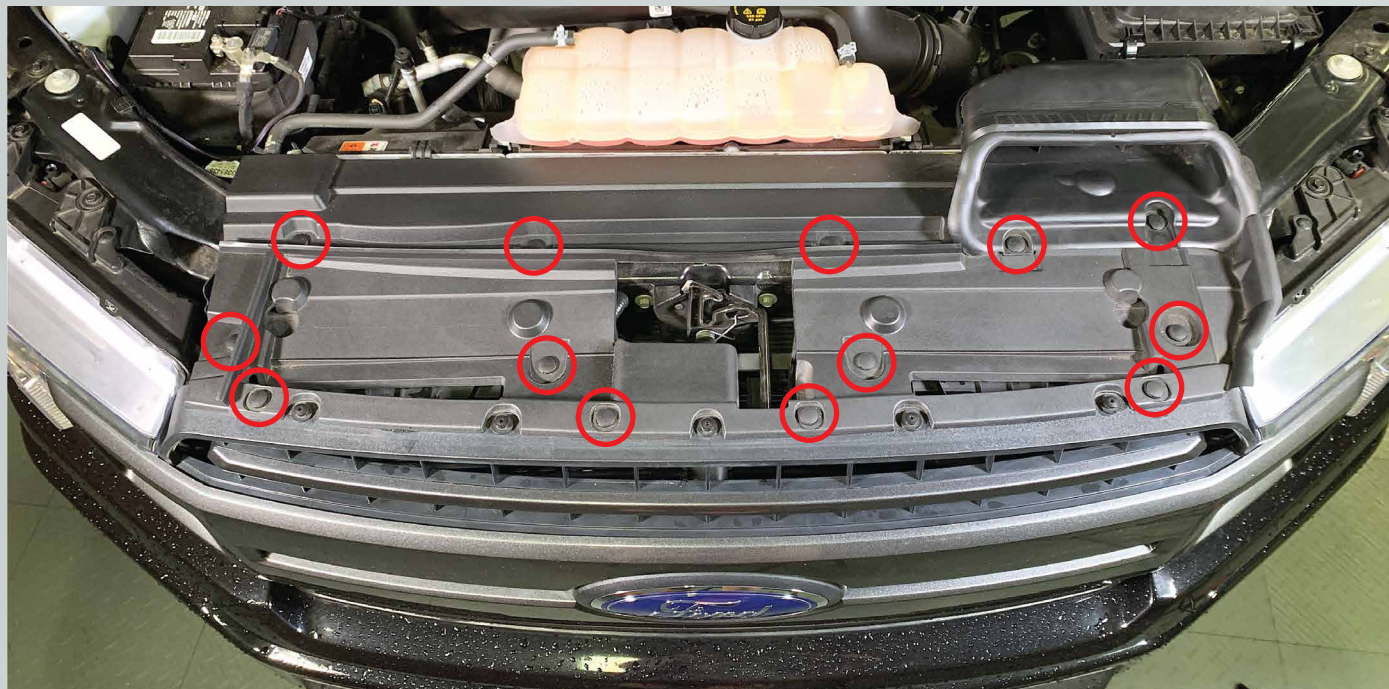
- INSTALLATION PROCESS PAGE 3
- FRONT TRIM REMOVAL INSTRUCTIONS PAGE 20

REQUIRED TOOLS

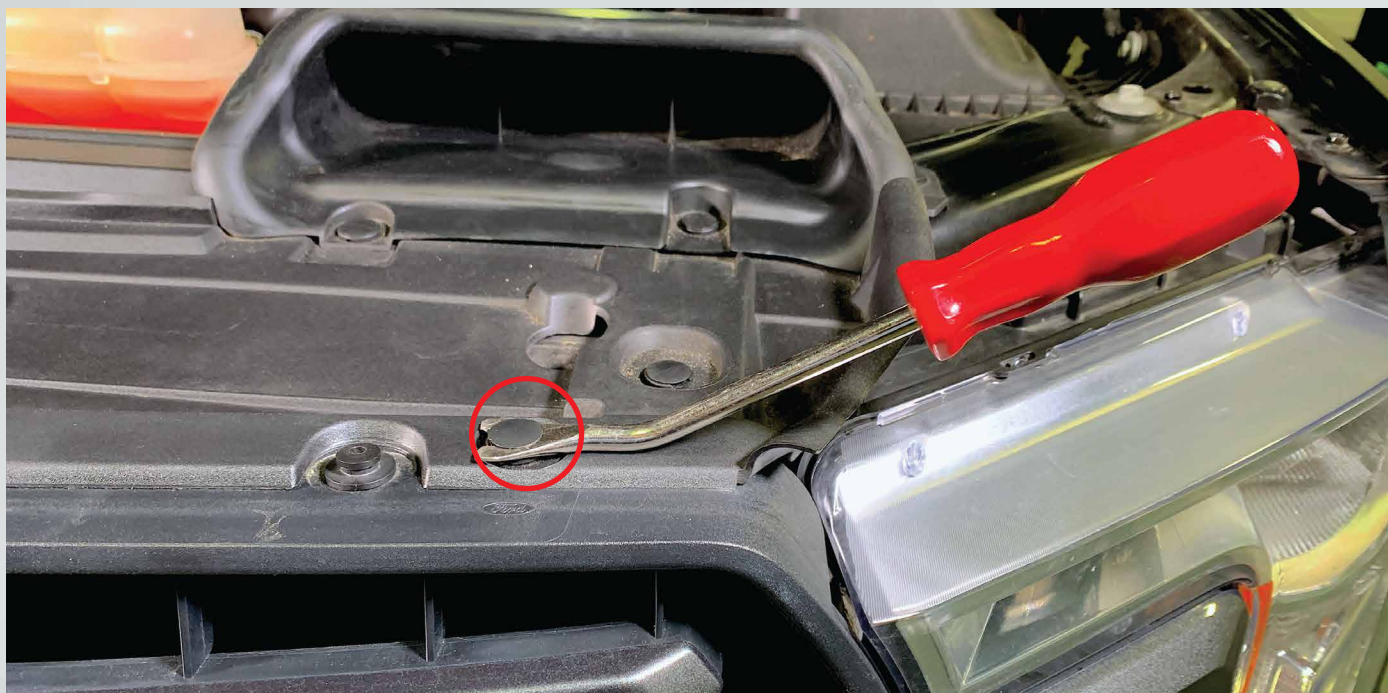
- RATCHET
- PHILIPS HEAD SCREWDRIVER
- 7MM SOCKET
- NEEDLE NOSE PLIERS
- 8MM SOCKET
- LOCKING PLIERS
- 10MM SOCKET
- WIRE CUTTERS
- FLAT HEAD SCREWDRIVER OR TRIM REMOVAL TOOL

INSTALLATION PROCESS

1. Remove the thirteen (13) plastic clips holding on the grille cover, and remove the grille cover.



2. To remove clips, take a flat head screwdriver and pry up on the head til it stops. Then pry up on the bottom part of the clip to remove it.



3. Remove two (2) 7mm bolts holding the fender flare .



4. Pry the flare up and away from the truck with a plastic pry tool to release it from the two (2) clips. Next pry out on the bumper trim to release it from the clips holding it to the fender along the red line.



5. Repeat steps 3 & 4 on the other side of the truck.

6. Release the bumper trim from the grille by pulling it towards you and with a thin pick, pry down the locking tabs. There are six (6) locking tabs in total. Then remove the upper bumper piece from the truck.



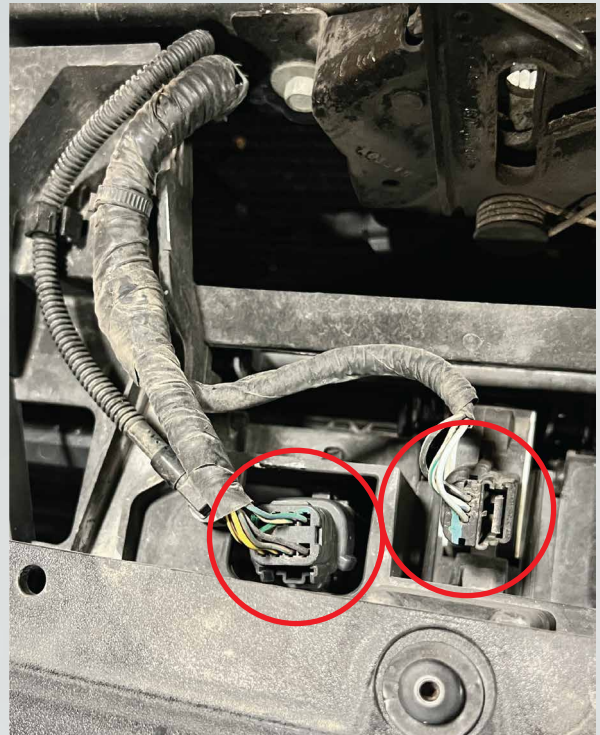
7. Remove four (4) 10mm bolts from the top of the grille.



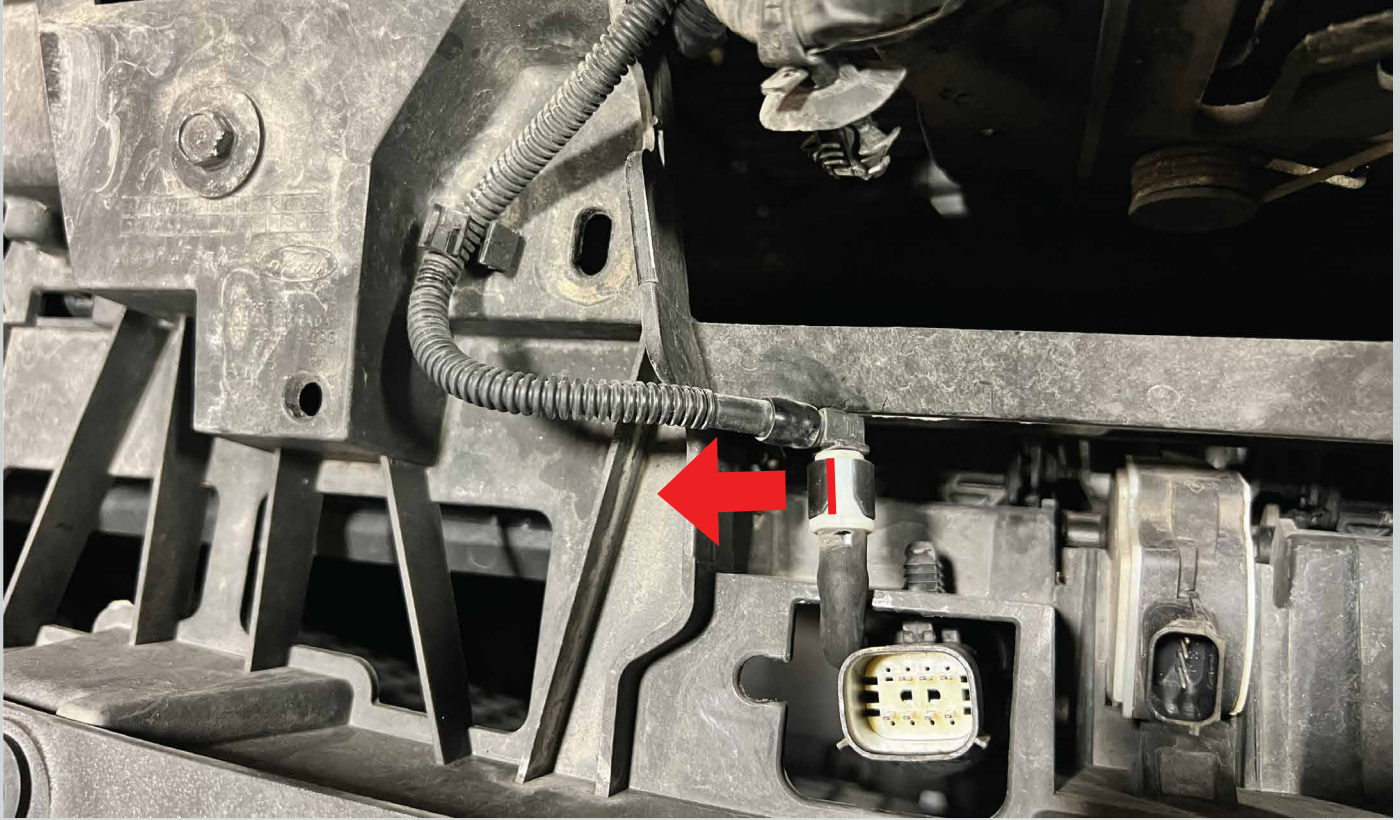
8. Remove connector off of the grille by pressing the release tab and sliding the connector up. Then pry up on the cable tie clip to release the wiring from the grille.



If your truck has a front camera, first release the clamp holding the plastic hose, then disconnect the two (2) electrical connectors.



9. Disconnect the camera washer hose by prying the ends of the black ring outwards, then slide the connection apart. A few drops of washer fluid may come out.



10. Remove one (1) 8mm bolt from the bottom of the grille. Remove the same bolt on the other side of the grille.



11. Pry up under the grille sides with a plastic pry tool to release the locking clips.



12. Pull the grille up and out to remove grille from the truck and set aside. May have to use some force to get it out as the grille gets caught on the rubber piece that is attached to the bumper.

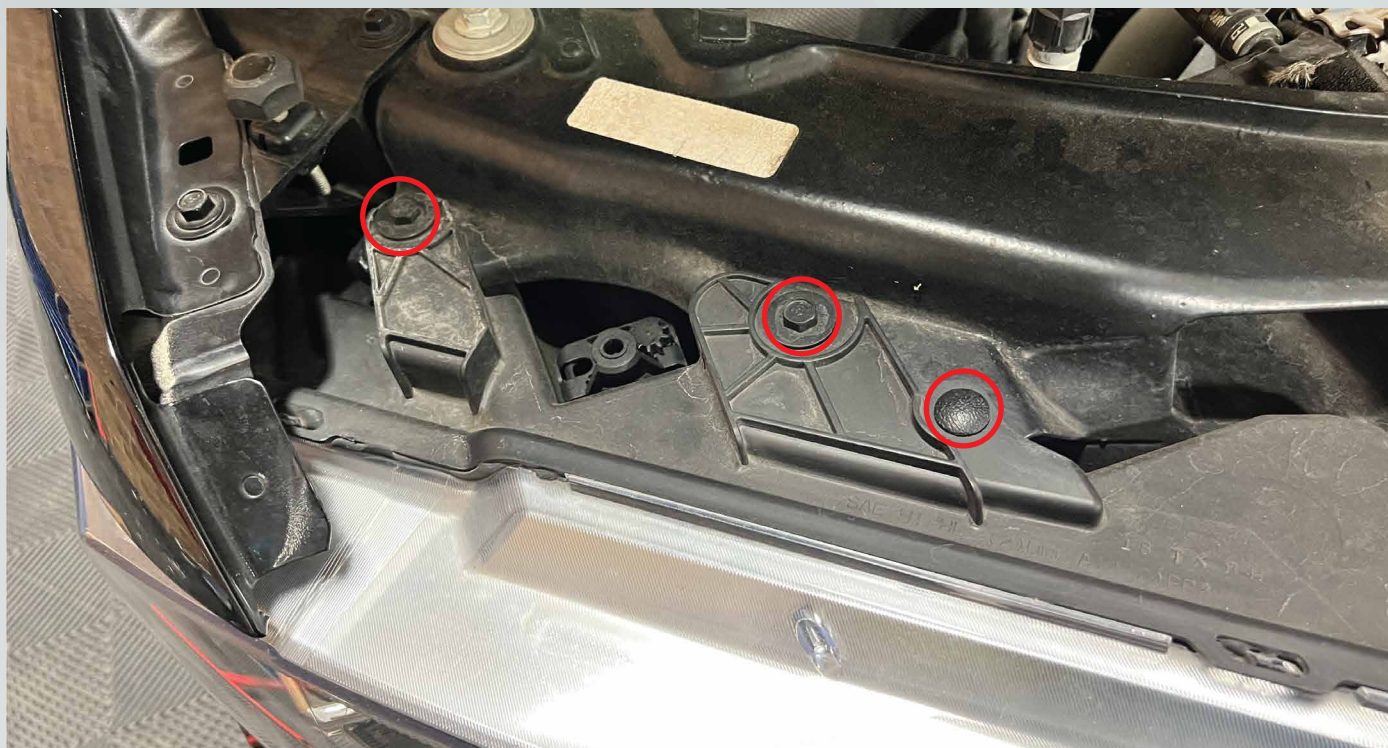
13. Remove three (3) 10mm bolts and one (1) 8mm bolt from the bottom of the passenger headlight. Remove the bracket with the three bolts.



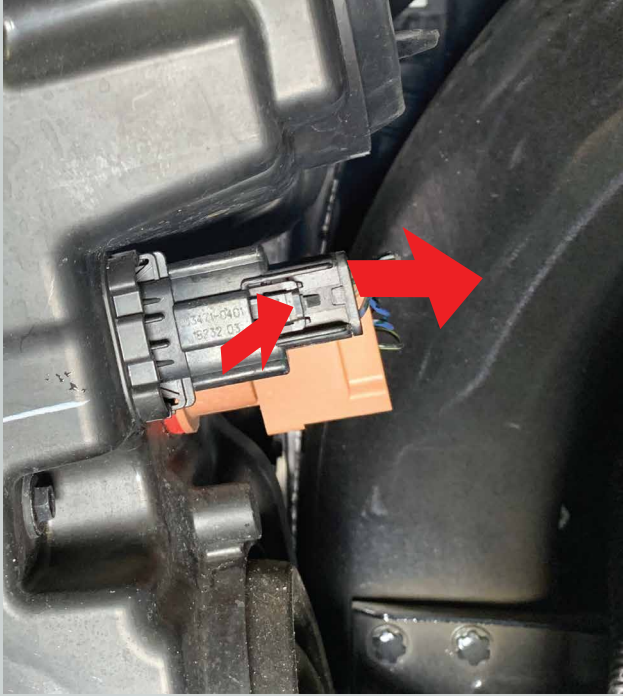
14. Pry down to release this vent from the headlight.



15. Remove two (2) 10mm bolts from the headlight. Pry up and remove the plastic clip. Slide the headlight forward to remove it from the truck.



16. If you have a OEM halogen truck, disconnect the black connector by pressing the release tab and sliding the connector off. Remove the turn signal socket the same way.

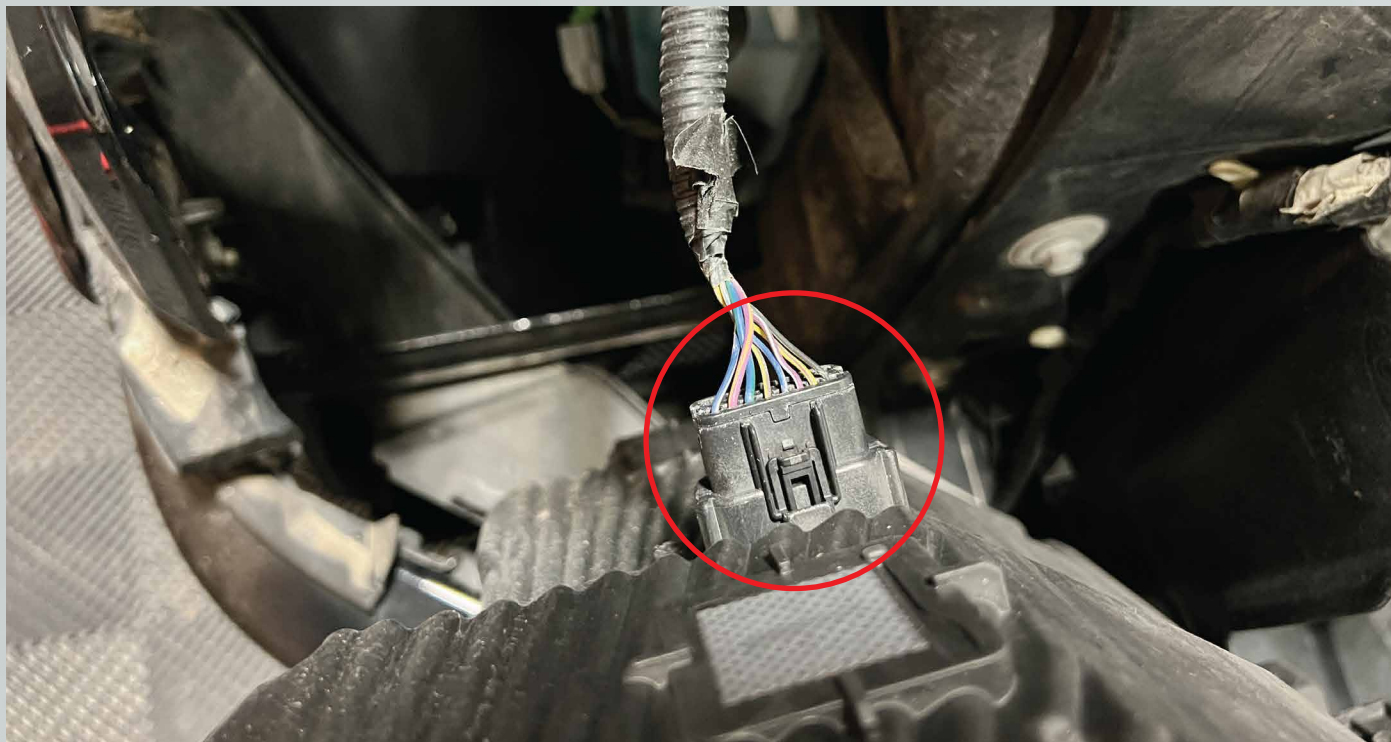


17. Disconnect the parking light black connector by pressing the release tab and sliding the connector off.

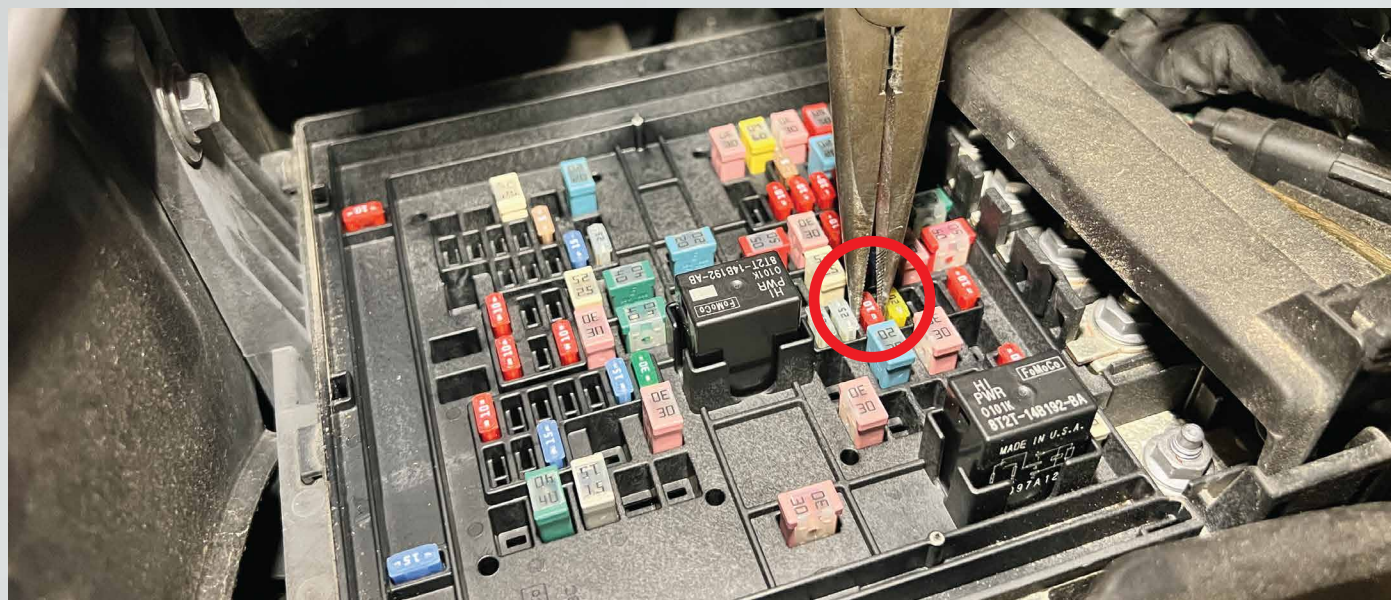


17. Remove headlight off the truck.

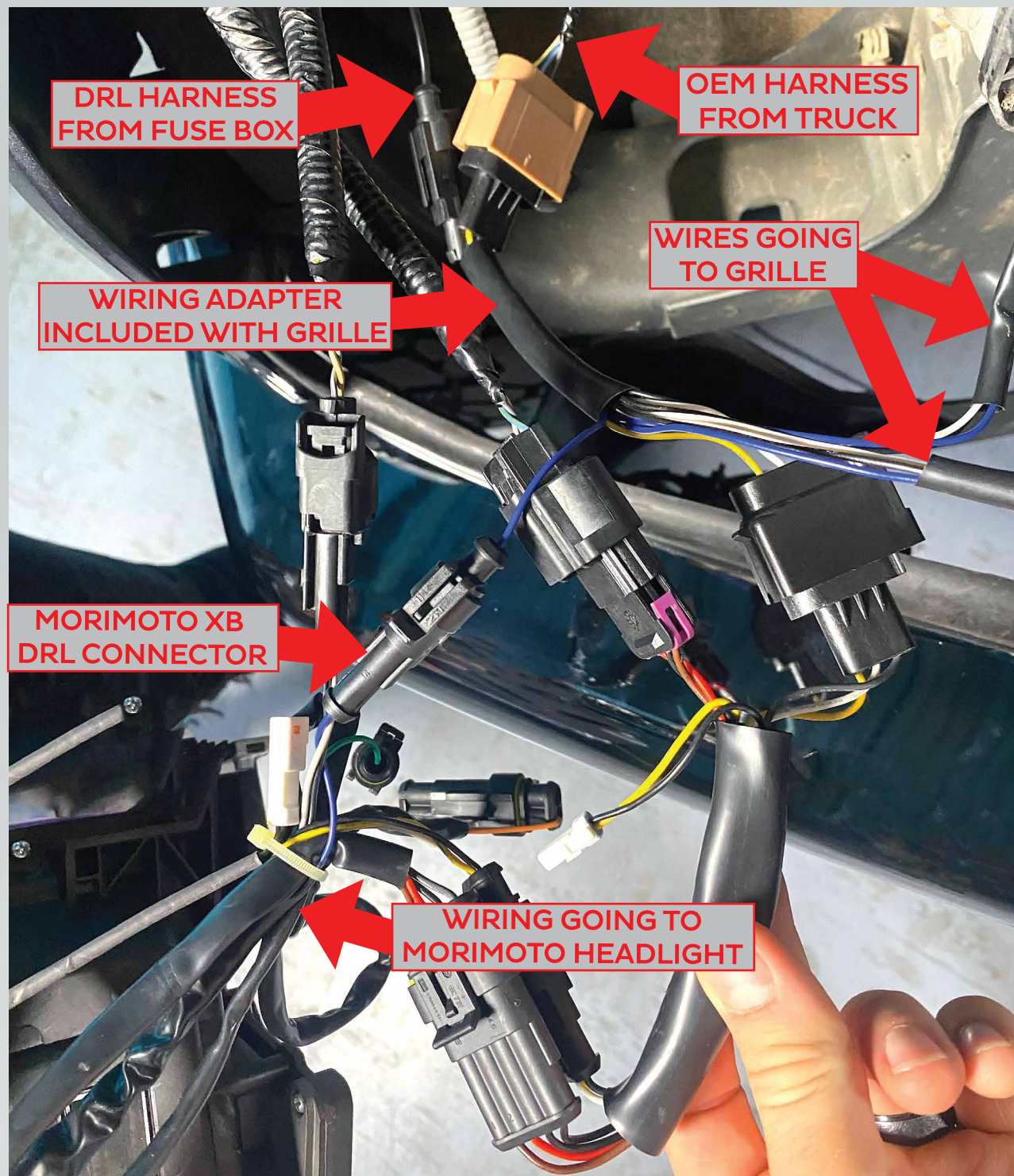
18. If you have an OEM LED truck, simply disconnect this one connector from your headlight, remove and set the headlight off to the side.



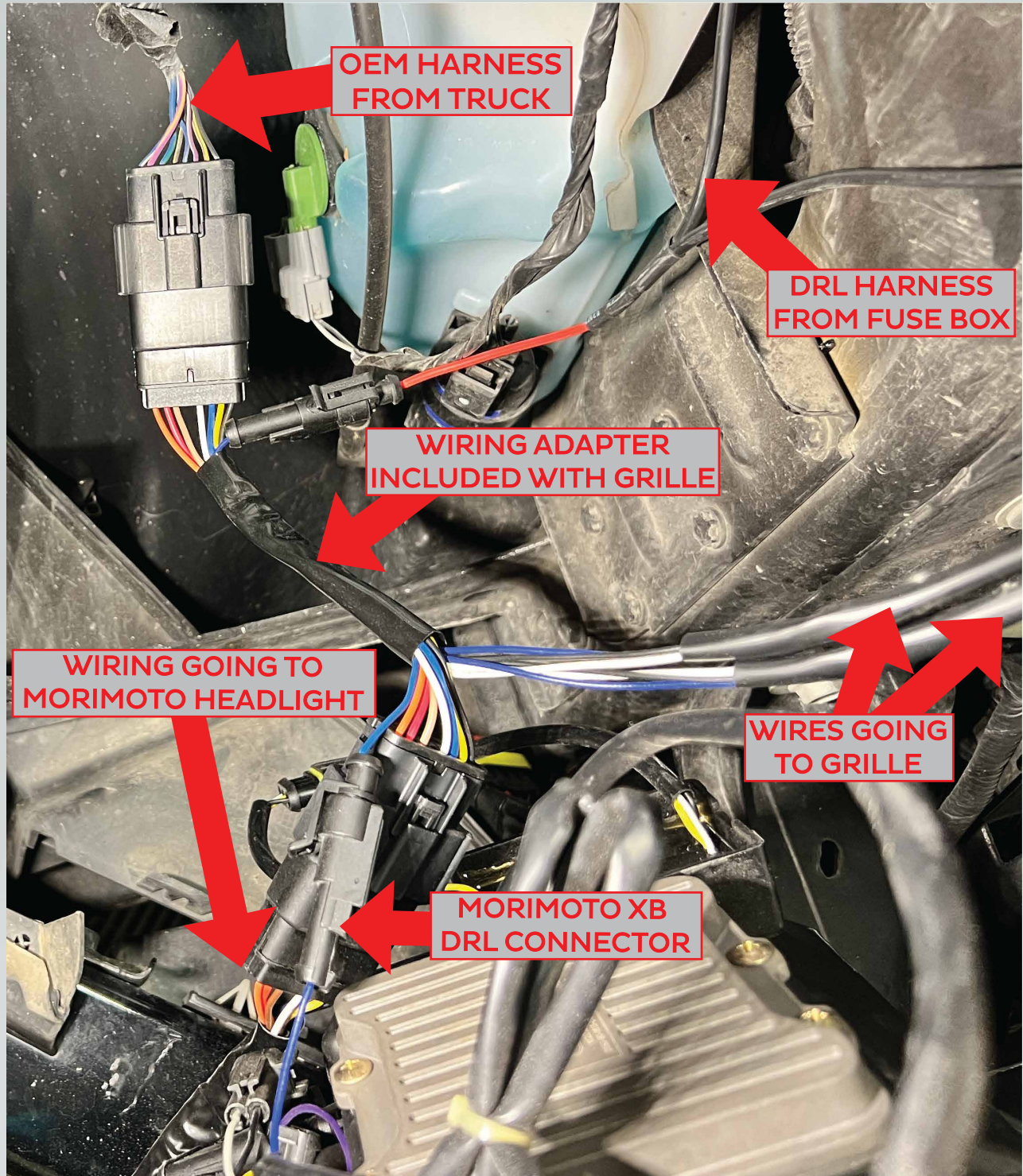
19. Locate the fuse box under the hood on the passenger side, by the firewall and remove fuse #36. Find the included fuse tap harness and plug it in place of the fuse you just removed. Route the end of the harness to the passenger side headlight area. (IF YOU ARE USING MORIMOTO HEADLIGHTS, USE THE FUSE TAP HARNESS THAT IS INCLUDED WITH THE HEADLIGHTS)



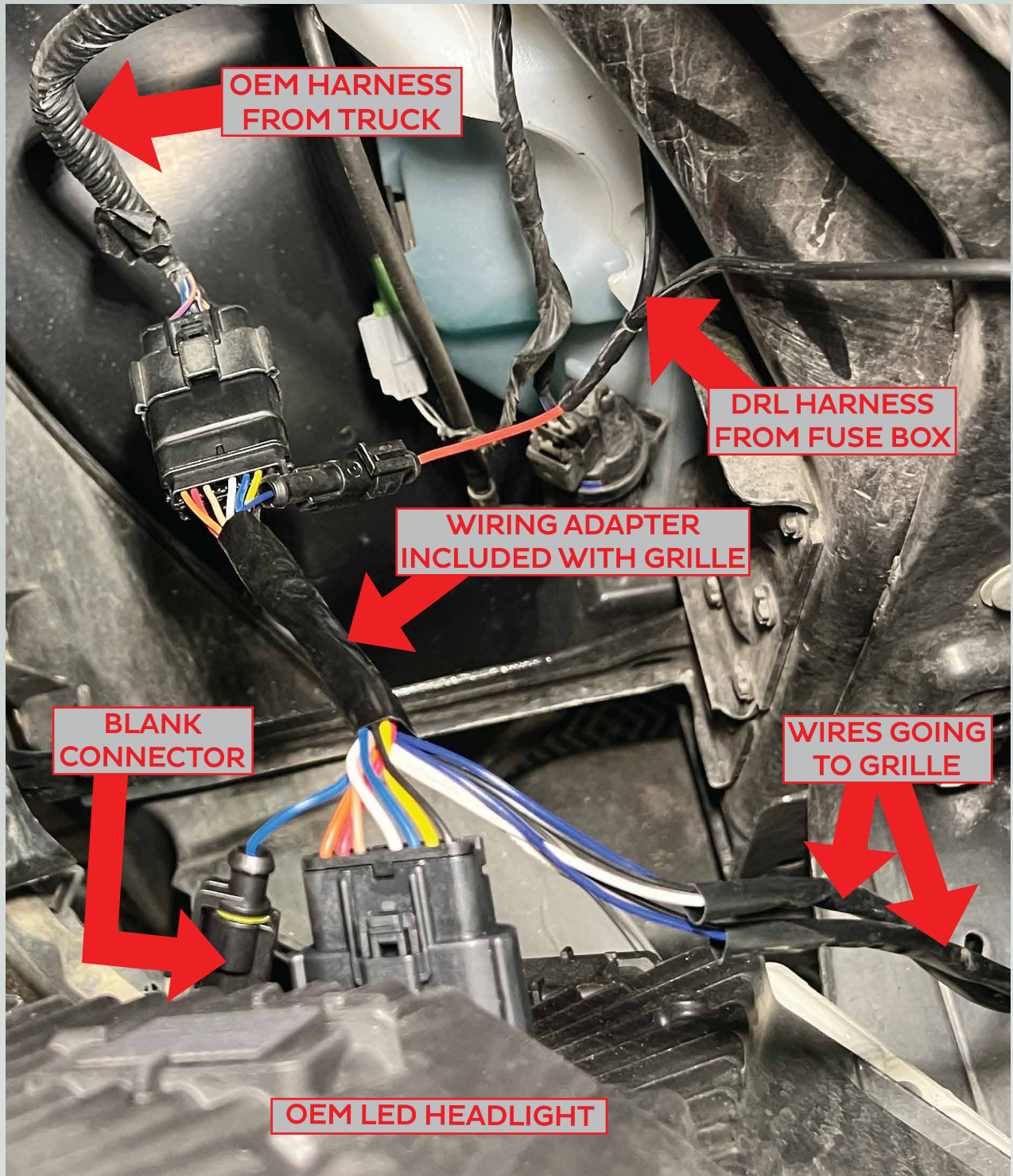
20. Locate the included headlight tap wiring. Plug it inline between your truck wiring and the headlight wiring. Route the wiring with the two (2) connectors, that go the grille, toward the grille area. Reinstall the headlight.



OEM HALOGEN TRUCK USING MORIMOTO XB HEADLIGHTS



**OEM LED TRUCK USING
MORIMOTO XB HEADLIGHTS**



**OEM LED TRUCK USING
OEM LED HEADLIGHTS**

21. Get your OEM grille and remove five (5) plastic clips from the top.



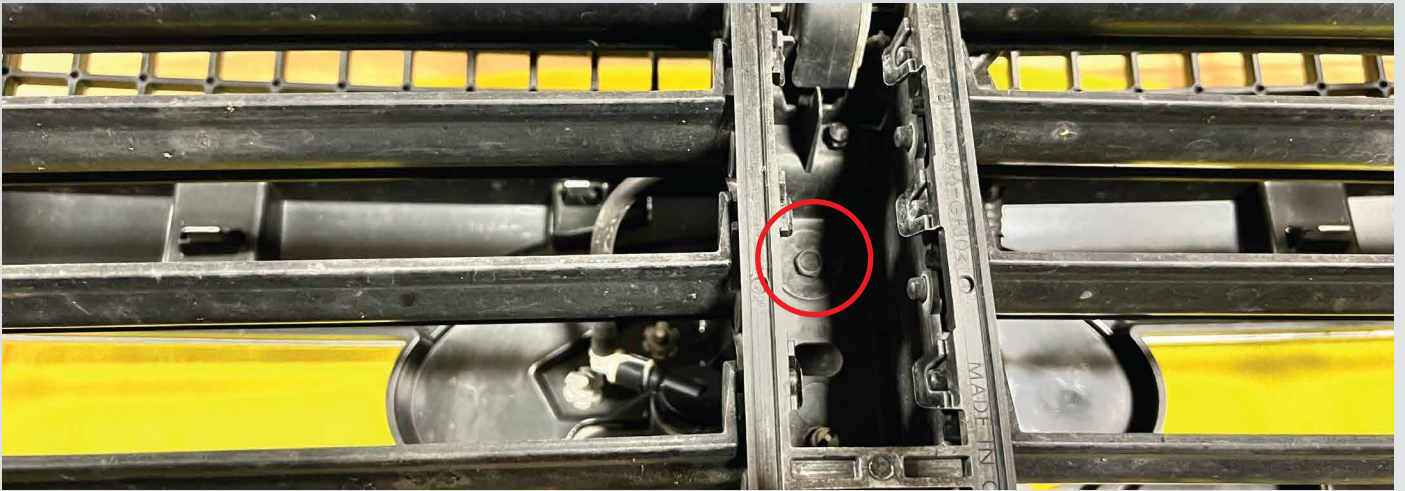
22. On the bottom of the grille, remove eight (8) plastic push clips and the plastic shield.



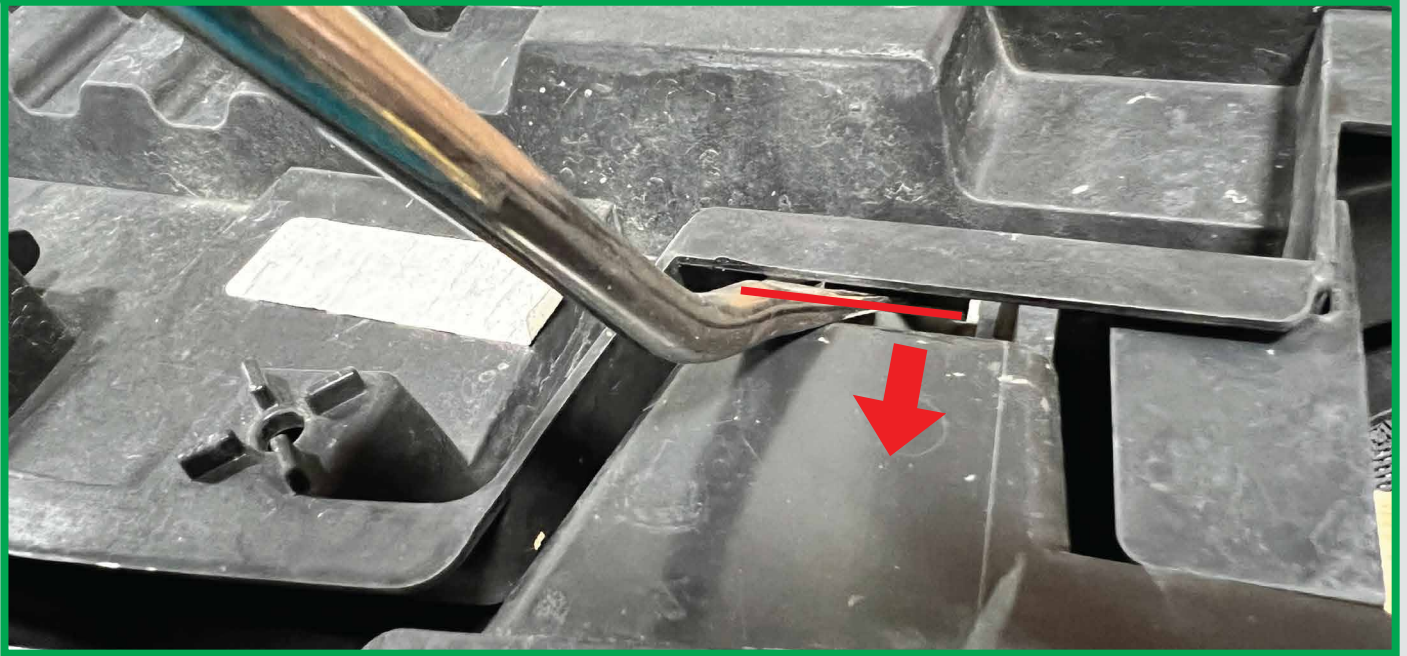
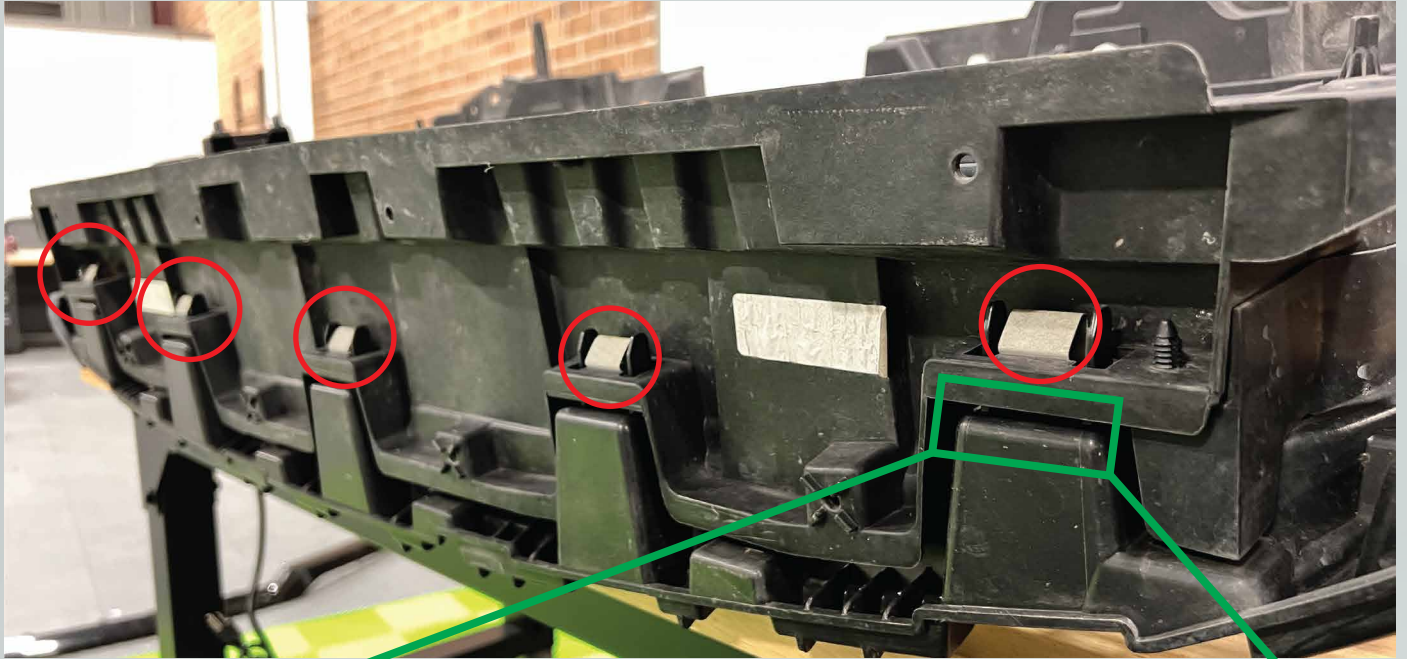
23. Flip the grille over on a clean, soft surface face down, and from the back remove these two (2) 10mm nuts, there are 2 per side. If the nut doesn't come off of the threaded shaft then that is fine, later we will fix that.



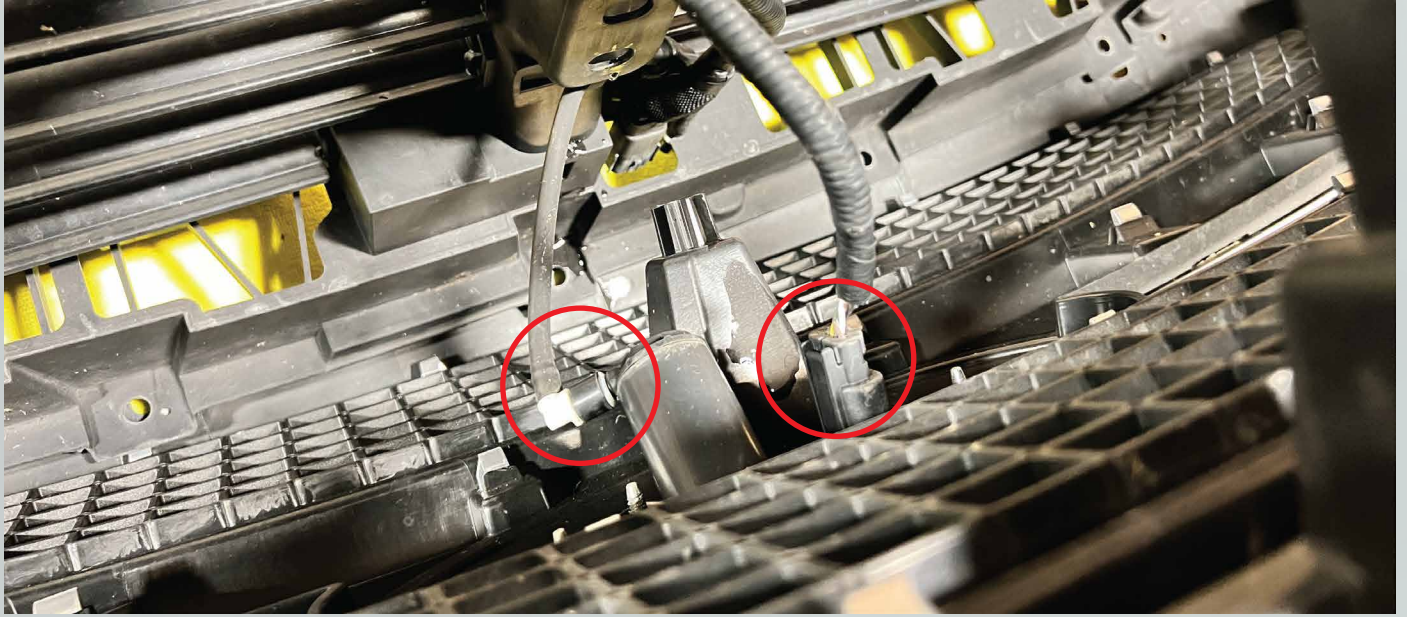
24. Remove one (1) 7mm bolt right behind the FORD emblem.



25. On the bottom of the grille these five (5) clips will need to be released. Do this by pressing down on the lip and the clip should release. While unlocking the clips slowly separate the two halves of the grille.



26. Once the grille is split open, if you have a front camera then go ahead and unplug the connector and washer hose line.



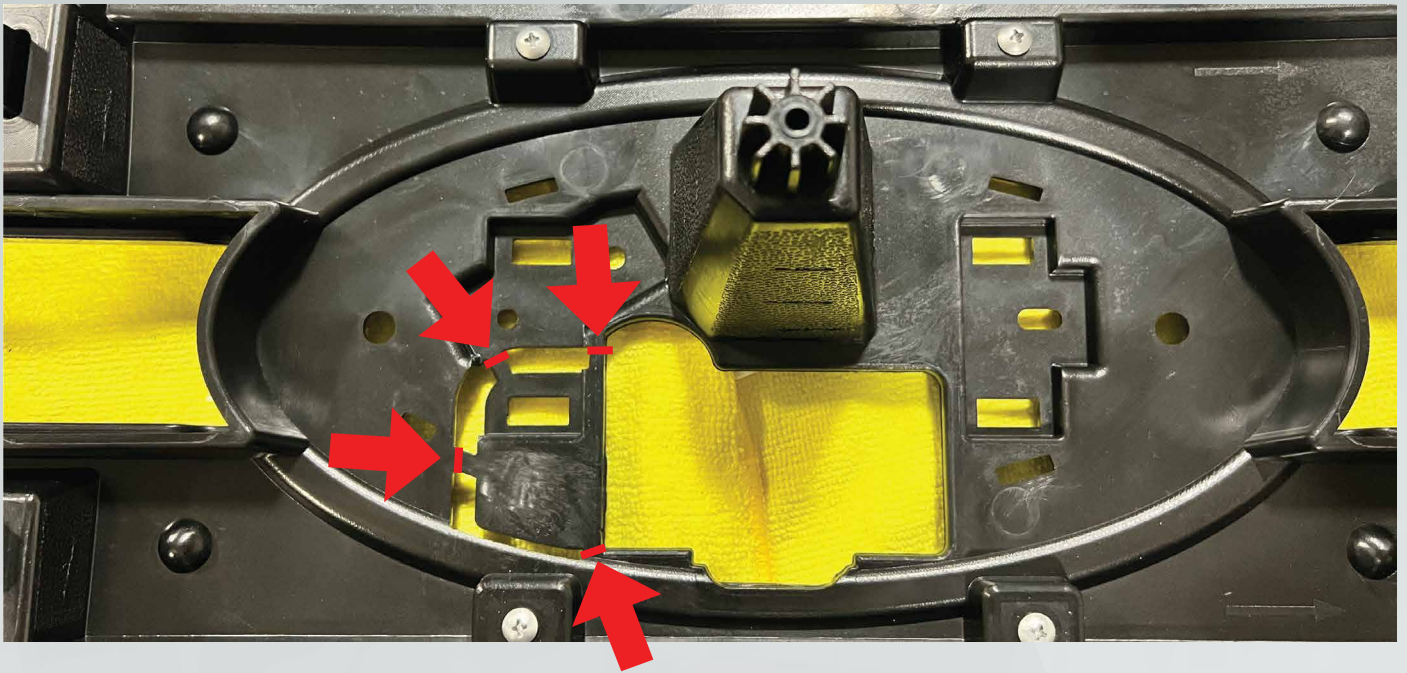
27. Remove the five (5) metal clips from the bottom of your oem grille and install them on your Morimoto grille.



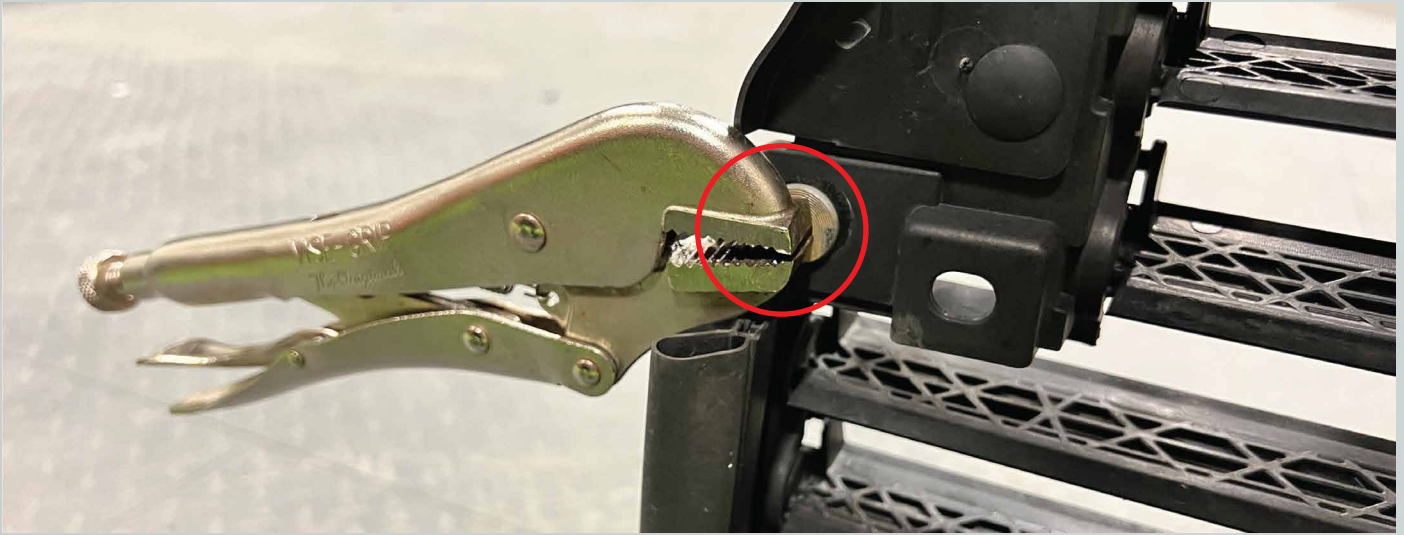
28. Remove the three (3) 10mm nuts on the back of the FORD emblem and remove the emblem. And install it into your Morimoto grille (HAND TIGHTEN ONLY).



If your FORD emblem has a camera and washer, you will have to make these four (4) cuts, with a pair of wire cutters, on the Morimoto grille and remove the extra plastic piece.



29. If the 10mm nuts didn't come off from step 23, get the back part of the OEM grille (with the flaps). Take a pair of locking pliers and lock them onto the coarse threaded side of the metal stud (be careful as these studs will get reused). Remove the 10mm nut from the other side. Repeat for the other nuts that didnt come off.



30. Thread the 10mm nut onto the fine threaded side, then thread the coarse threaded side of the stud into the included plastic clips. Hold the clip with some pliers as the stud will be cutting itself new threads. Then slide the clips with installed studs into your Morimoto grille. If installed properly, the clips should lock in place.



31. Install your Morimoto grille onto the OEM grille piece (with air shutters). Make sure the XBG wiring doesn't get trapped in between the 2 halves but make sure it comes out of the passenger side.
 - If you have the OEM camera and washer connect them before you lock the halves together.
 - Now make sure the bottom metal clips lock in.
 - Reinstall the bottom plastic shield with the eight (8) push clips.
 - Reinstall the four (4) 10mm nuts, two on each side of the grille.
 - Reinstall the one (1) 7mm bolt on the center of the grille (behind the emblem).
 - Reinstall the five (5) plastic clips on the top of the grille.
32. Set the grille onto the bumper and plug in the two (2) XBG connectors into the connectors that are run from the back of the passenger side headlight (these 2 connectors are interchangeable). Tuck the wiring behind the headlight so it's not in the way of the grille mounting to the truck.



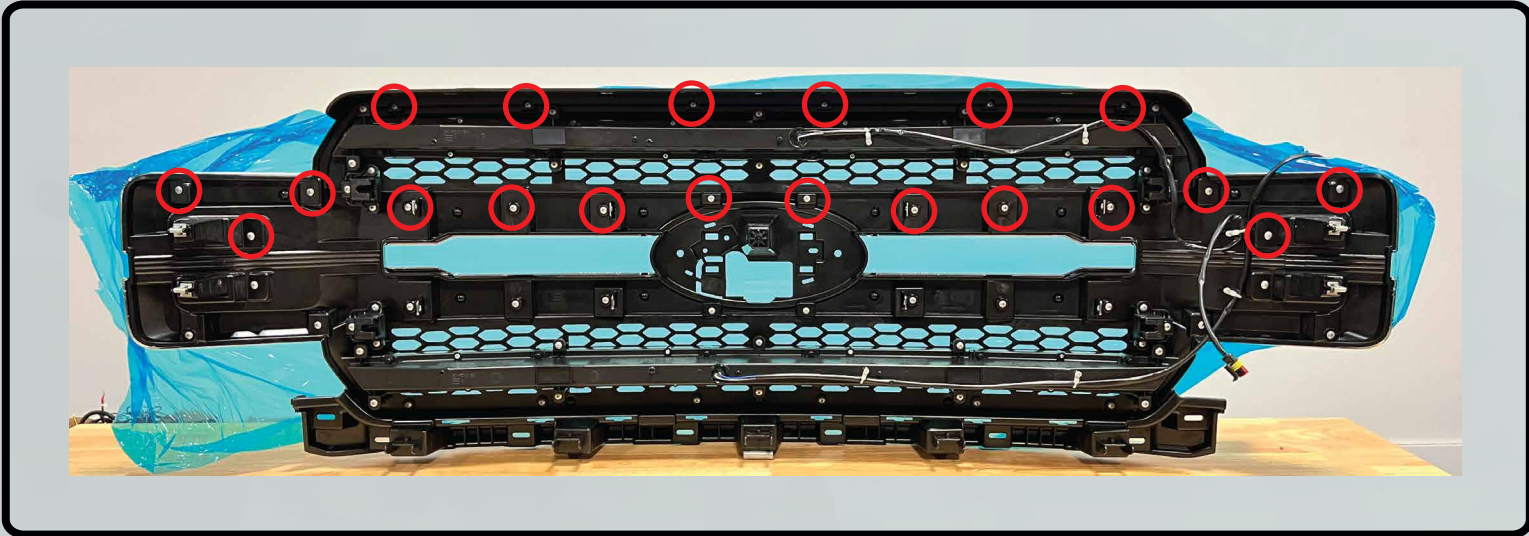
33. Set the grille into it's resting place. Plug in the OEM wiring at the top of the grille.
34. Turn the truck on and test all of the functions.
35. Reassemble the truck in the opposite order of removal.

ENJOY YOUR NEW MORIMOTO XBG GRILLE!

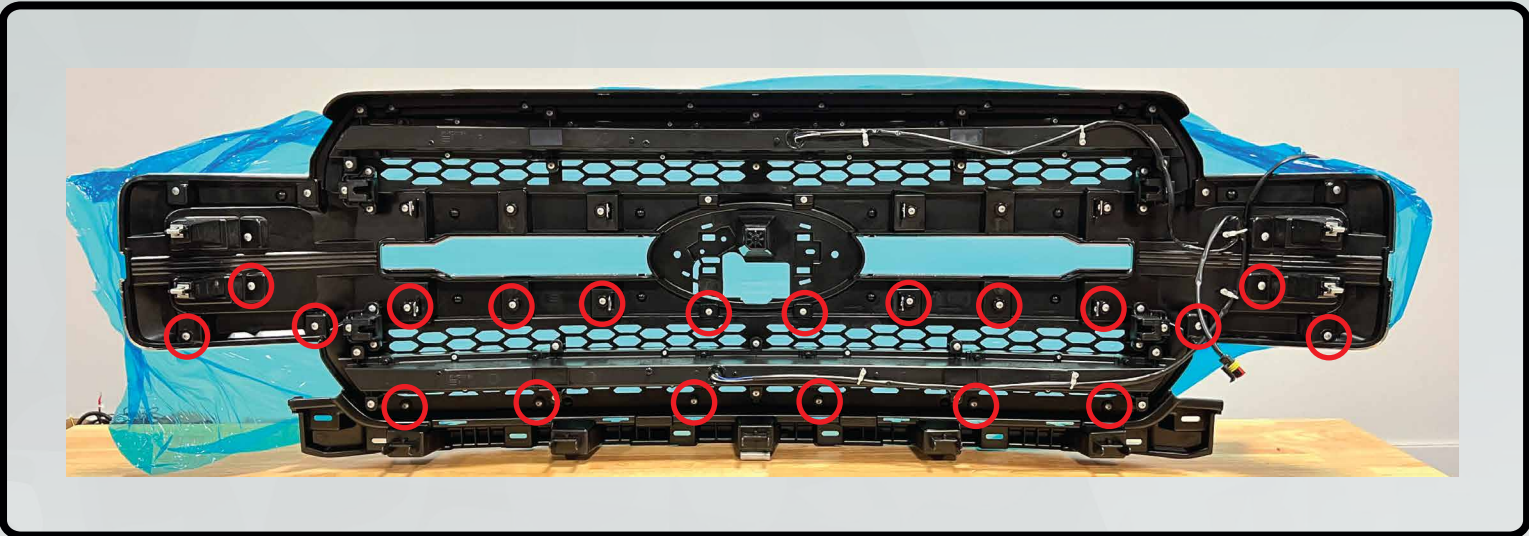
FRONT TRIM SWAP INSTRUCTIONS

(FOR REMOVING THE PAINTABLE TRIM PIECES TO GET PAINTED OR WRAPPED)

1. Remove these twenty (20) philips head screws to remove the top trim piece.



2. Remove these twenty (20) philips head screws to remove the bottom trim piece.



WHEN REINSTALLING THE SCREWS, HAND TIGHTEN ONLY!