

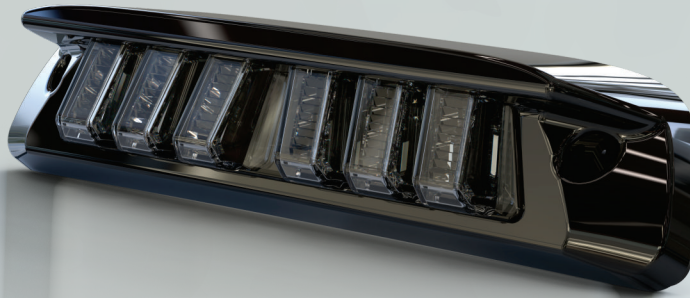


THE AUTOMOTIVE LIGHTING BENCHMARK

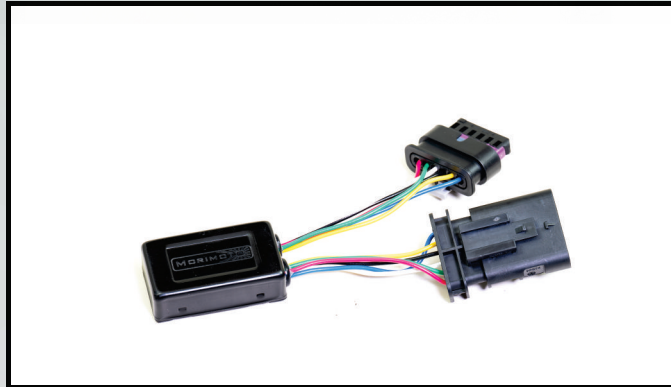
05-15 TACOMA X3B THIRD BRAKE LIGHT INSTALLATION GUIDE

WARNING: By reading this document, you agree it is only to be used as an educational guide. Morimoto Lighting nor its dealers make guarantees on any finished results, nor are they to be held responsible for any damage, misuse, or personal injuries. If you are unable to clearly understand and adapt the information below, professional installation is recommended.

PACKAGE CONTENTS



1X THIRD BRAKE LIGHT



OPTIONAL X3B01 RAPID FLASH MODULE

TOOLS REQUIRED

T20 TORX SCREWDRIVER

INSTALLATION PROCESS

1. Remove the 2 (two) Philips screws holding the brake light in place. Pull brake light away from vehicle.



2. Using a trim removal tool, carefully wedge between the third brake light and cab, loosening the foam seal from the cab in the process.



3. Once the foam seal has been broken from the cab, unplug and pull out the third brake light.



2. Using a trim removal tool, carefully wedge between the third brake light and cab, loosening the foam seal from the cab in the process.



3. For steps on installing the Rapid Flash Module (SKU X3B01), see Page 4.

4. Installation is reverse of removal. Do not overtighten the screws when reinstalling. Snug by hand only.

5. Turn on the truck and go through all modes to ensure proper functionality.

-END-

RAPID FLASH MODULE INSTALLATION

1. Unclip the wiring harness from the back of the X3B Brake Light (Image 1)
2. Plug the female connector into the X3B Brake Light (Image 2)
3. Plug X3B Brake Light harness into male connector of the flasher module.
4. Peel back wrapper from double-sided tape on the flasher module. Stick and secure module onto either the back of the X3B Brake Light or the inside of the light cavity.
5. Turn on the truck and go through all modes to ensure proper functionality.
6. Enjoy your new X3B Brake Light with Rapid Flash!

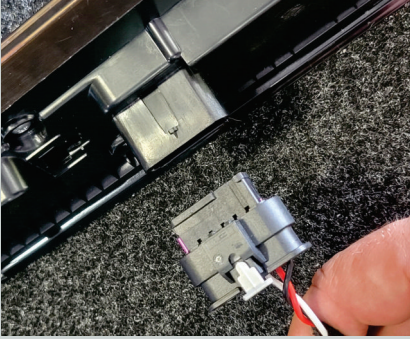


Image 1

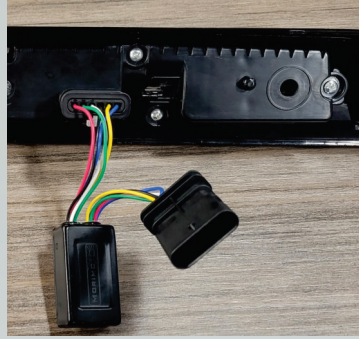


Image 2

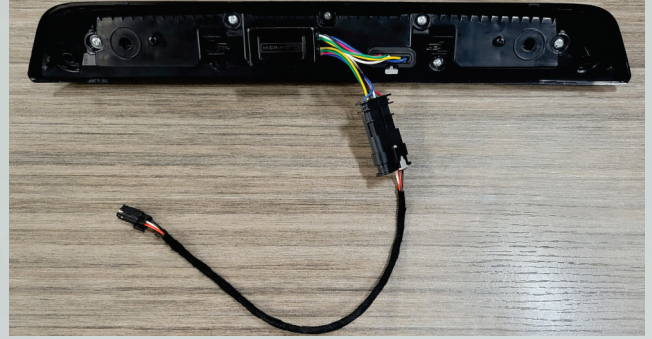


Image 3

-END-