



THE AUTOMOTIVE LIGHTING BENCHMARK

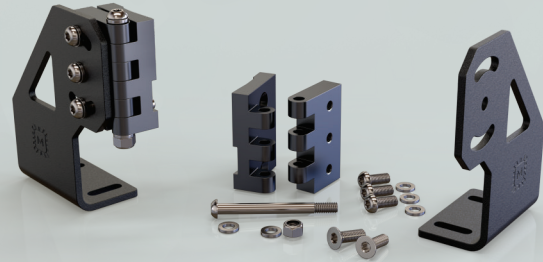
TRIPLE ROW LIGHT BAR FEATURING BIGBANGER PODS ASSEMBLY GUIDE

WARNING: By reading this document, you agree it is only to be used as an educational guide. Morimoto Lighting nor its dealers make guarantees on any finished results, nor are they to be held responsible for any damage, misuse, or personal injuries. If you are unable to clearly understand and adapt the information below, professional installation is recommended.

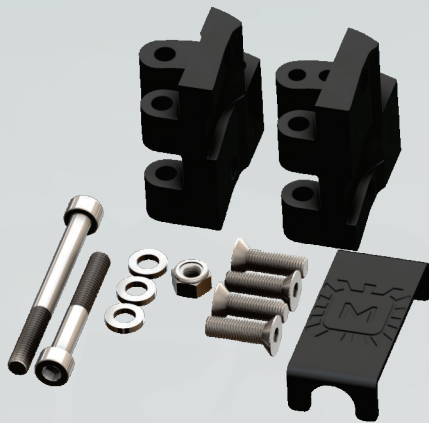
PACKAGE CONTENTS



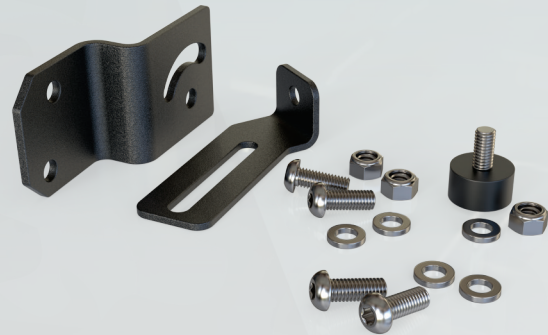
BIGBANGER PODS
(PRE-CONFIGURED QTY)



2X BAR END MOUNTING FEET



POD-LINK KITS
(PRE-CONFIGURED QTY)



MIDDLE SUPPORT LEG(S)
(PRE-CONFIGURED QTY)

TOOLS REQUIRED

- 10MM SOCKET OR WRENCH
- T27 TORX BIT OR DRIVER
- 4MM L-KEY OR DRIVER
- 5MM L-KEY OR DRIVER
- PLIERS (OPTIONAL)

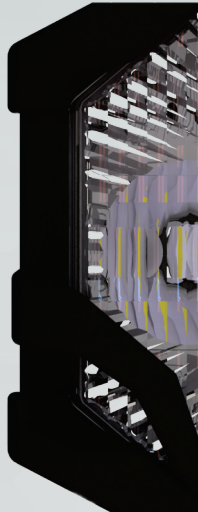
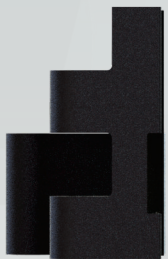
**DO NOT USE
POWER TOOLS!**

ASSEMBLY PROCESS

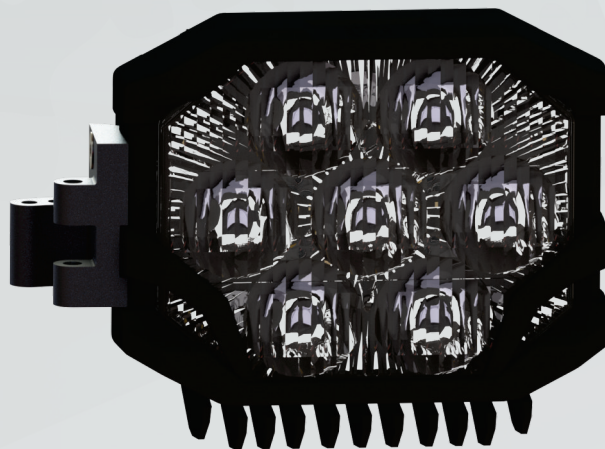
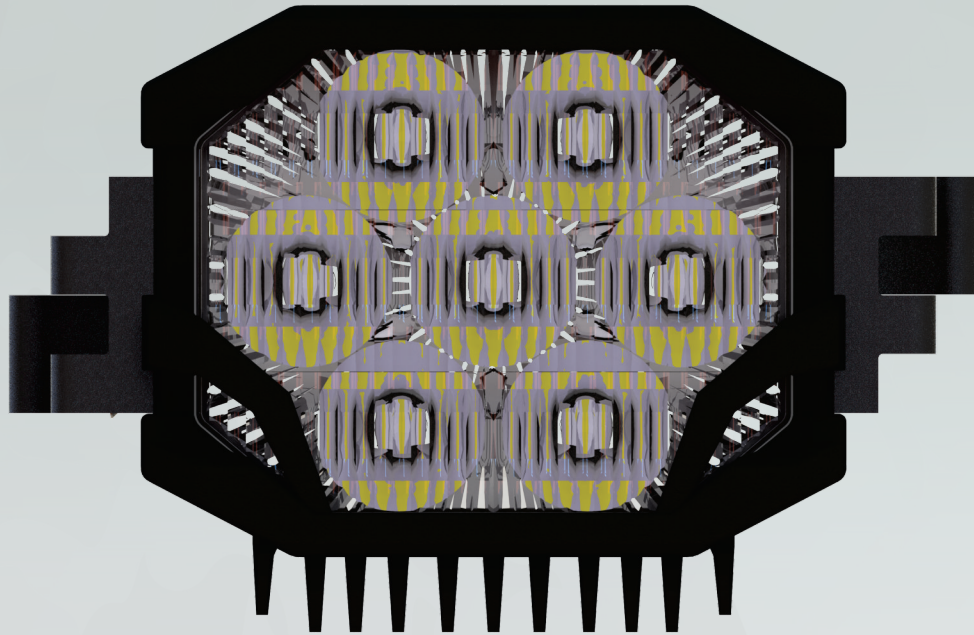
1. Begin by removing the pre-installed u-brackets from the BigBangers using a torx T27 bit or driver. Lay out the pods in a line to be assembled. Follow the recommended format below:



2. Fit the interlink pieces to the end of each BigBanger pod, except for the end pods. Note: these pieces are not interchangeable. Install and tighten the M6 flat head screws using a 4mm hex key or bit.

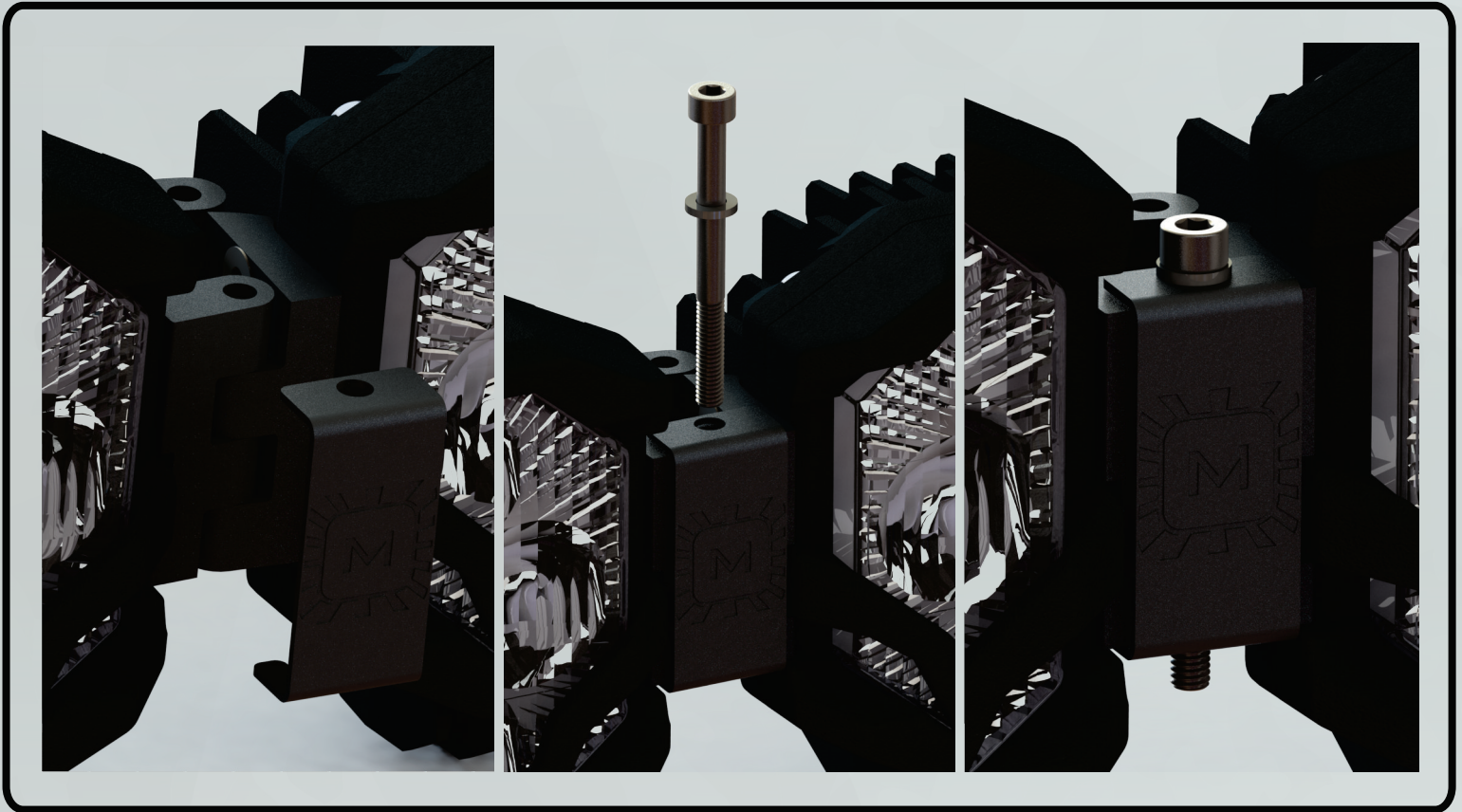


3. Repeat the bracket install for the remaining pods. Note: All pods will have two brackets installed except for the end pods. These pods will only have one bracket installed toward the center of the bar (shown at bottom).

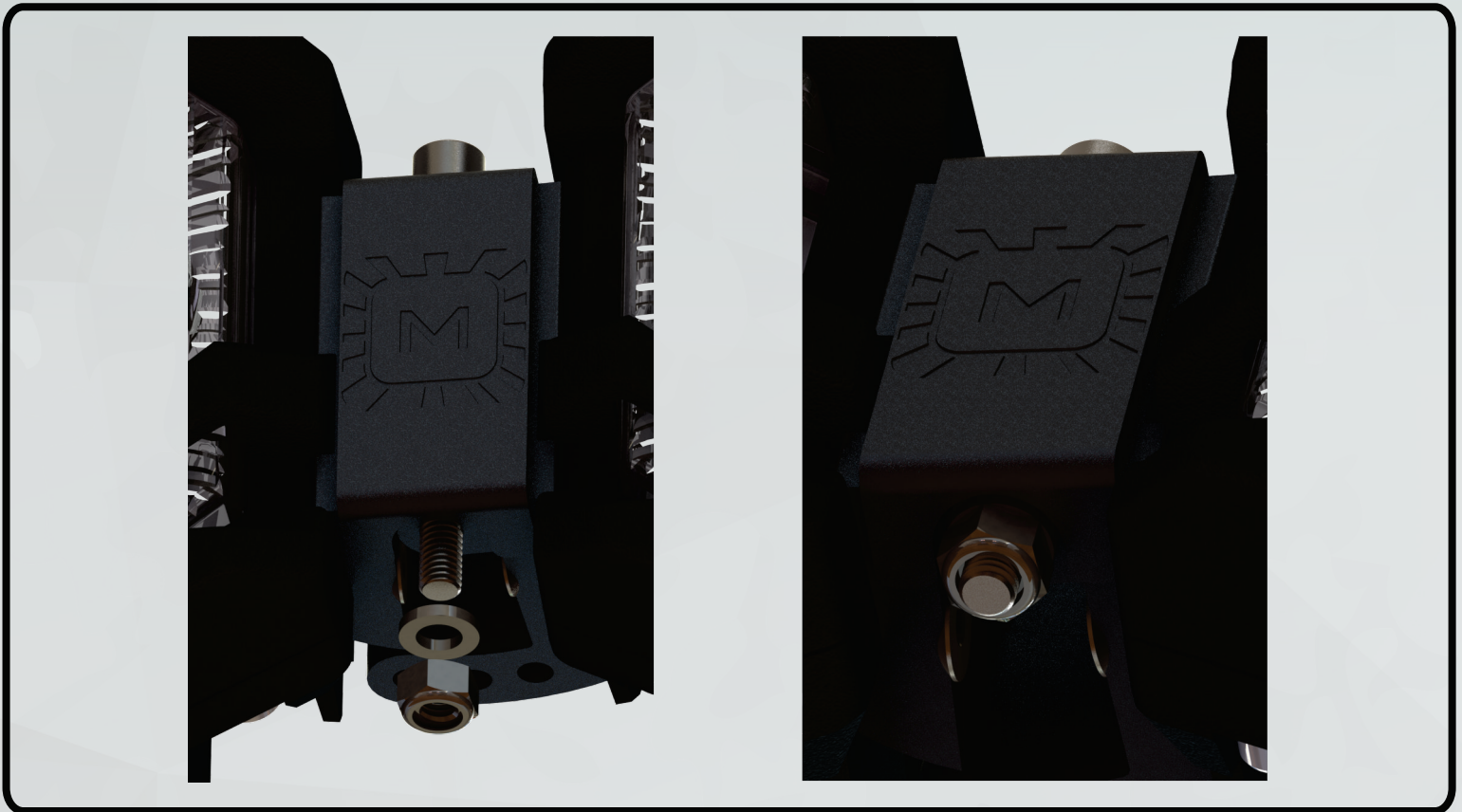


END POD

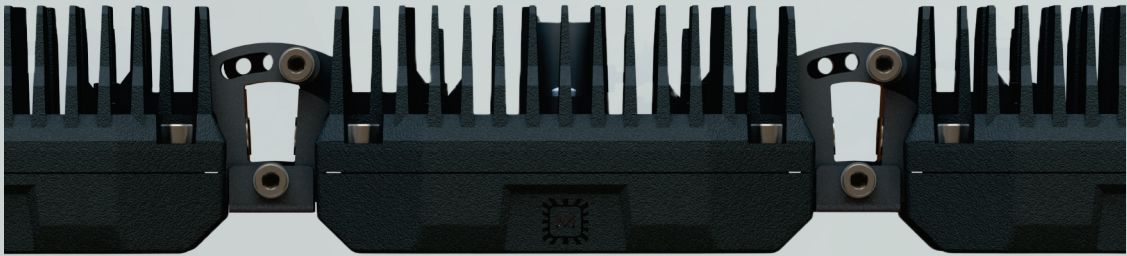
4. Fit a front cover over the link assembly. Using a M6 x 65mm screw and an M6 washer, assemble the pieces as shown.



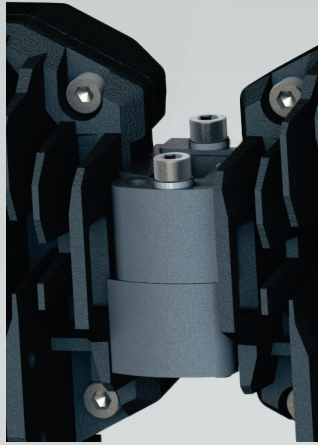
5. Fit an M6 washer and M6 lock nut from below. Snug up using a 5mm hex key and 10mm socket or wrench. Do not fully tighten!



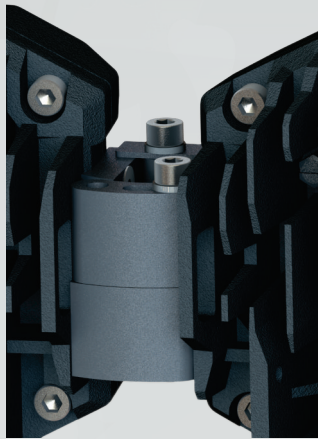
6. With the brackets snugly together, fit an M6 washer on an M6 X 45mm screw into the desired hole to create either a flat bar or curved.



0 Degrees

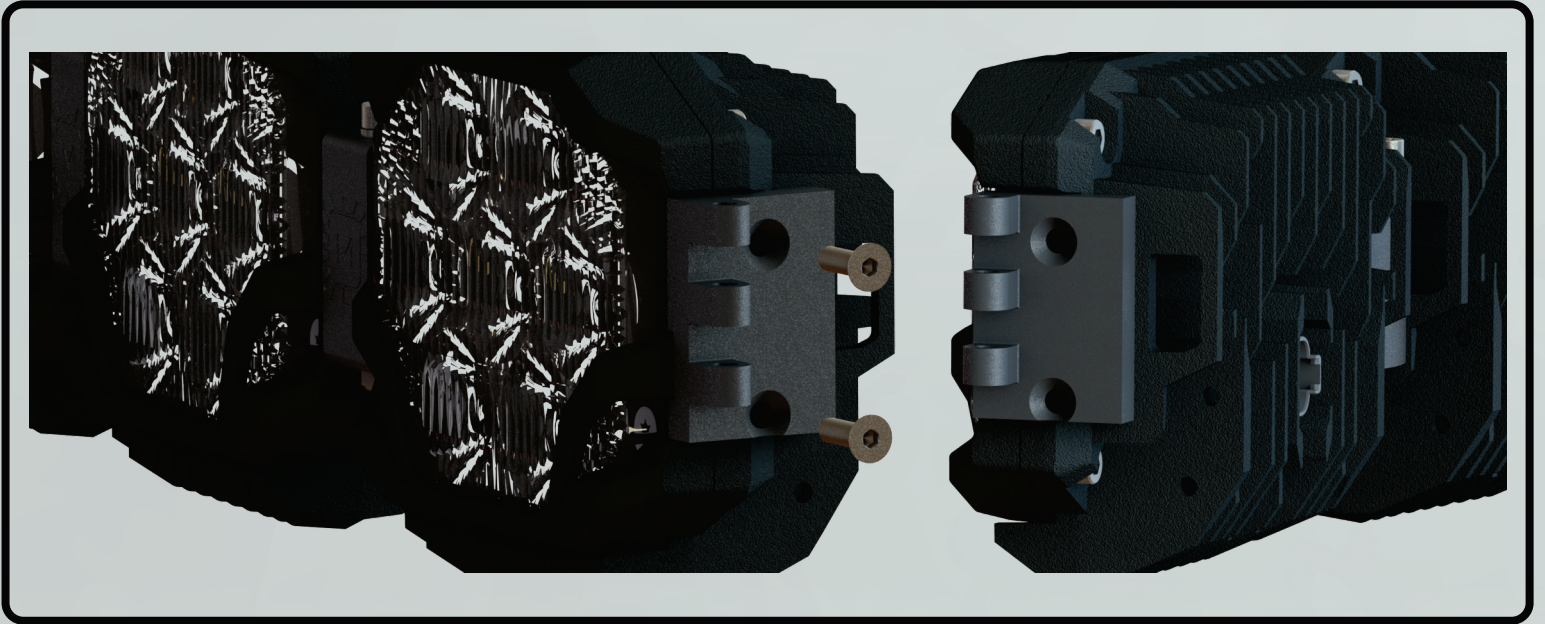


3 Degrees

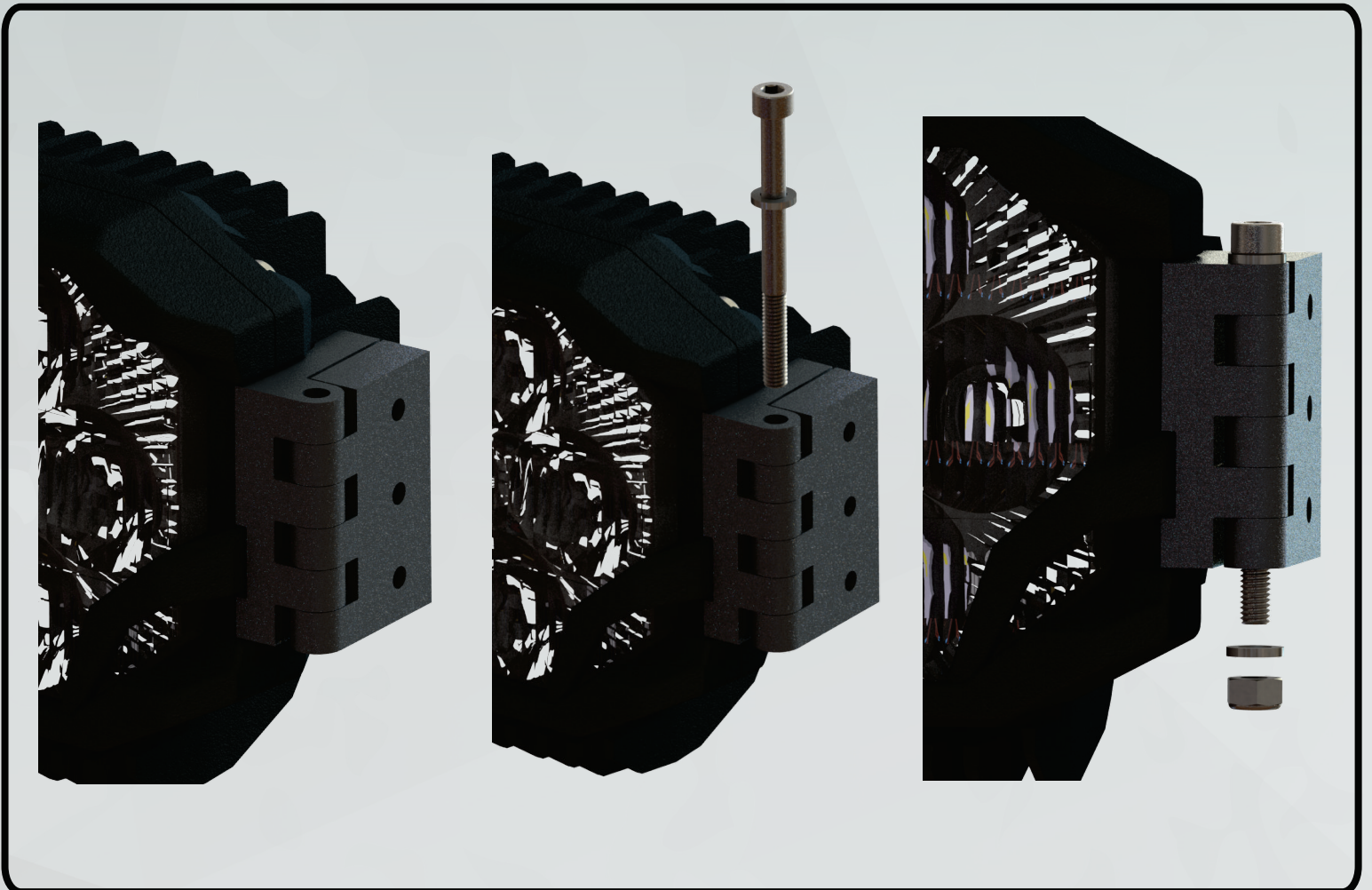


6 Degrees

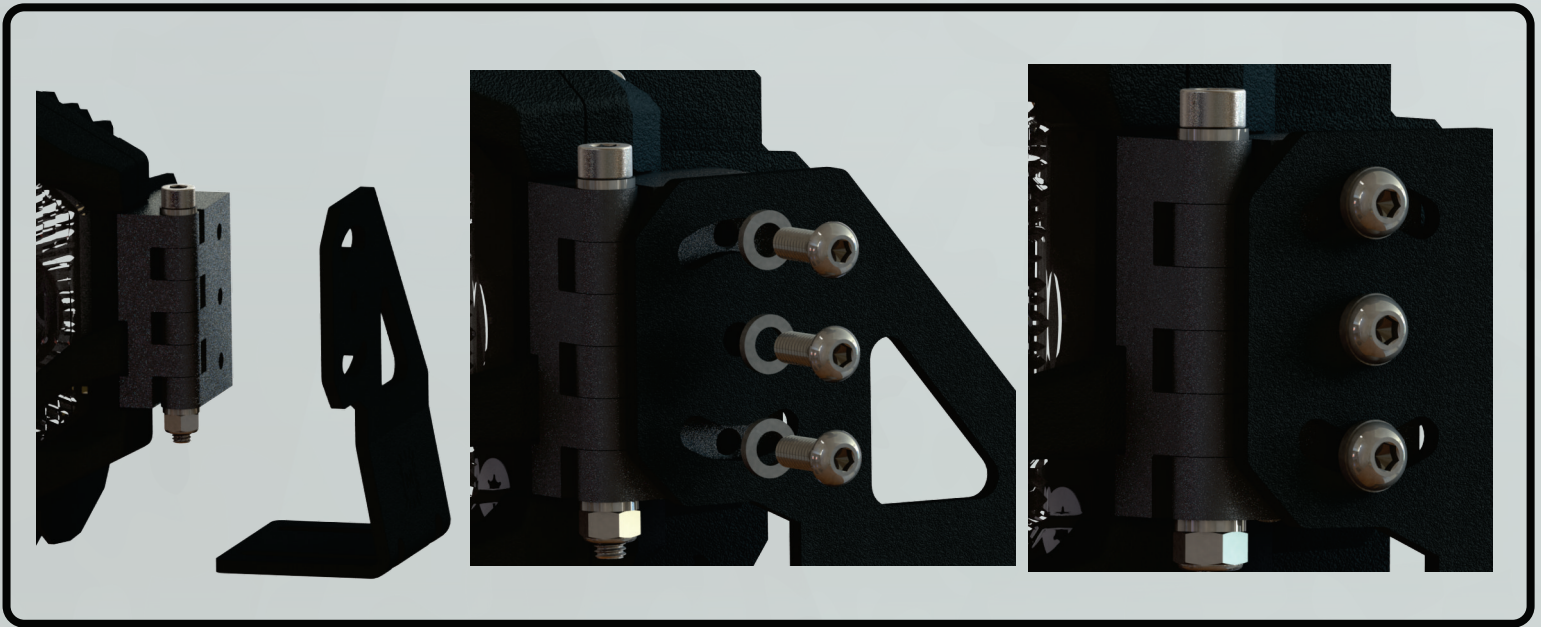
7. At the ends, align the appropriate bracket to the pod. Install and tighten 2x M6 flat head screws using a 4mm hex key.



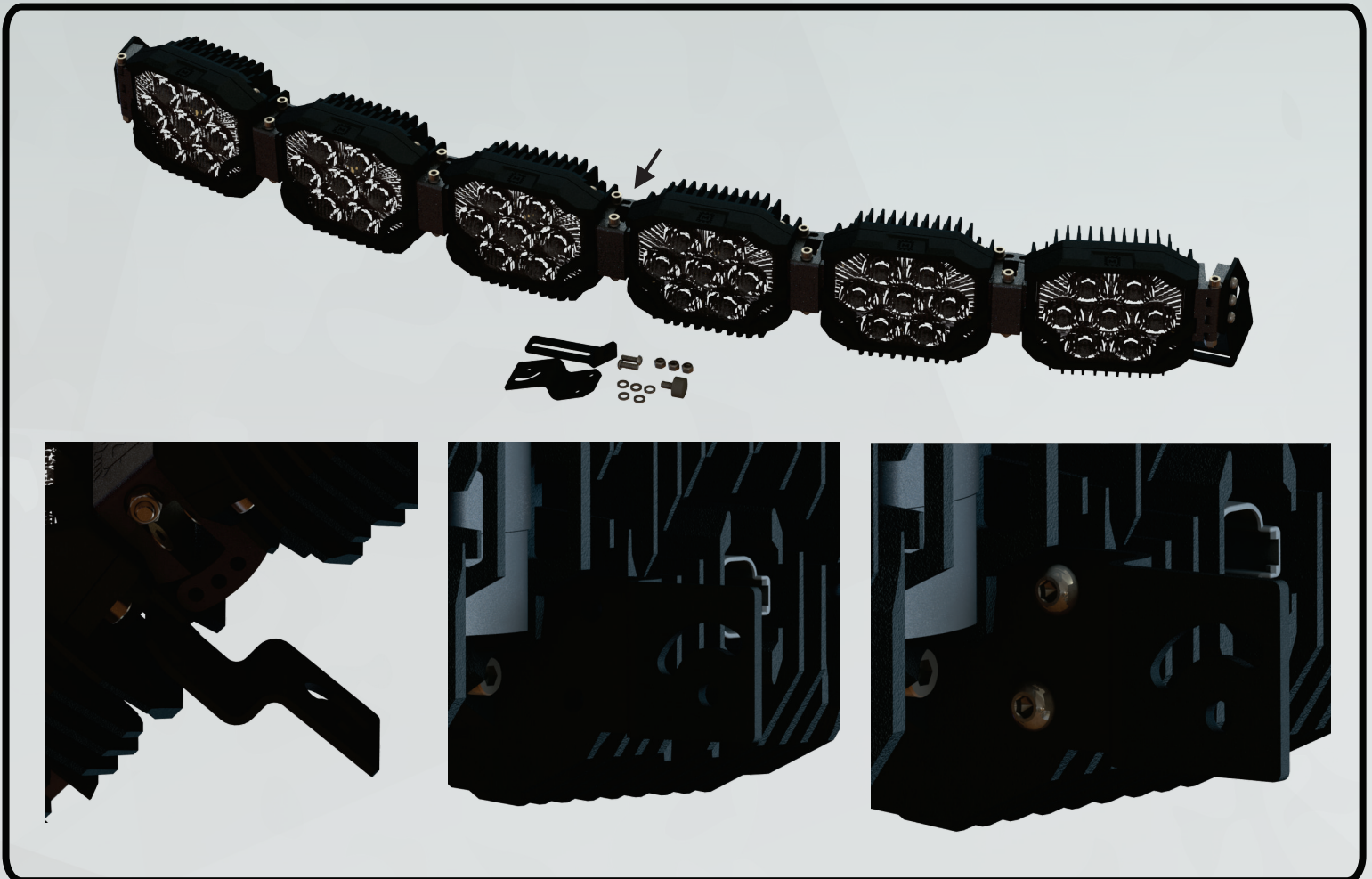
8. Align the swivel brackets to those installed in the prior step. Fit an M6 x 70mm screw with an M6 washer in and through the hinge. At the bottom, add an M6 washer and M6 lock nut and snug up with a 5mm hex key and 10mm socket or wrench but do not fully tighten!



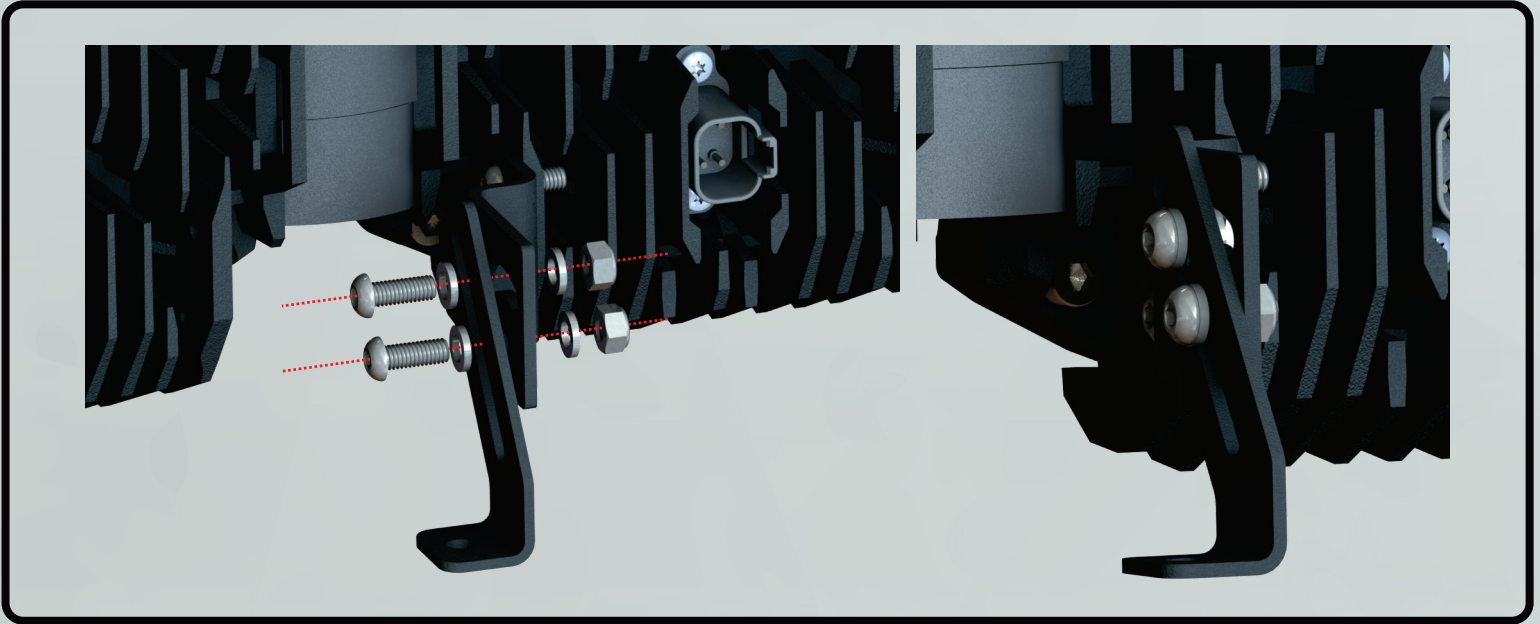
9. Align the steel mounting brackets to the holes on the swivel brackets. Using a 5mm hex key, fit and snug up three M6 x 16mm screws with M6 washers. Do not fully tighten!



11. Support legs are provided to minimize vibration and movement. We recommend using a support leg every 3-4 brackets. This will help distribute the load more evenly across the assembly. Fit the bracket by removing the pre-installed screws and then re-install them through the bracket.

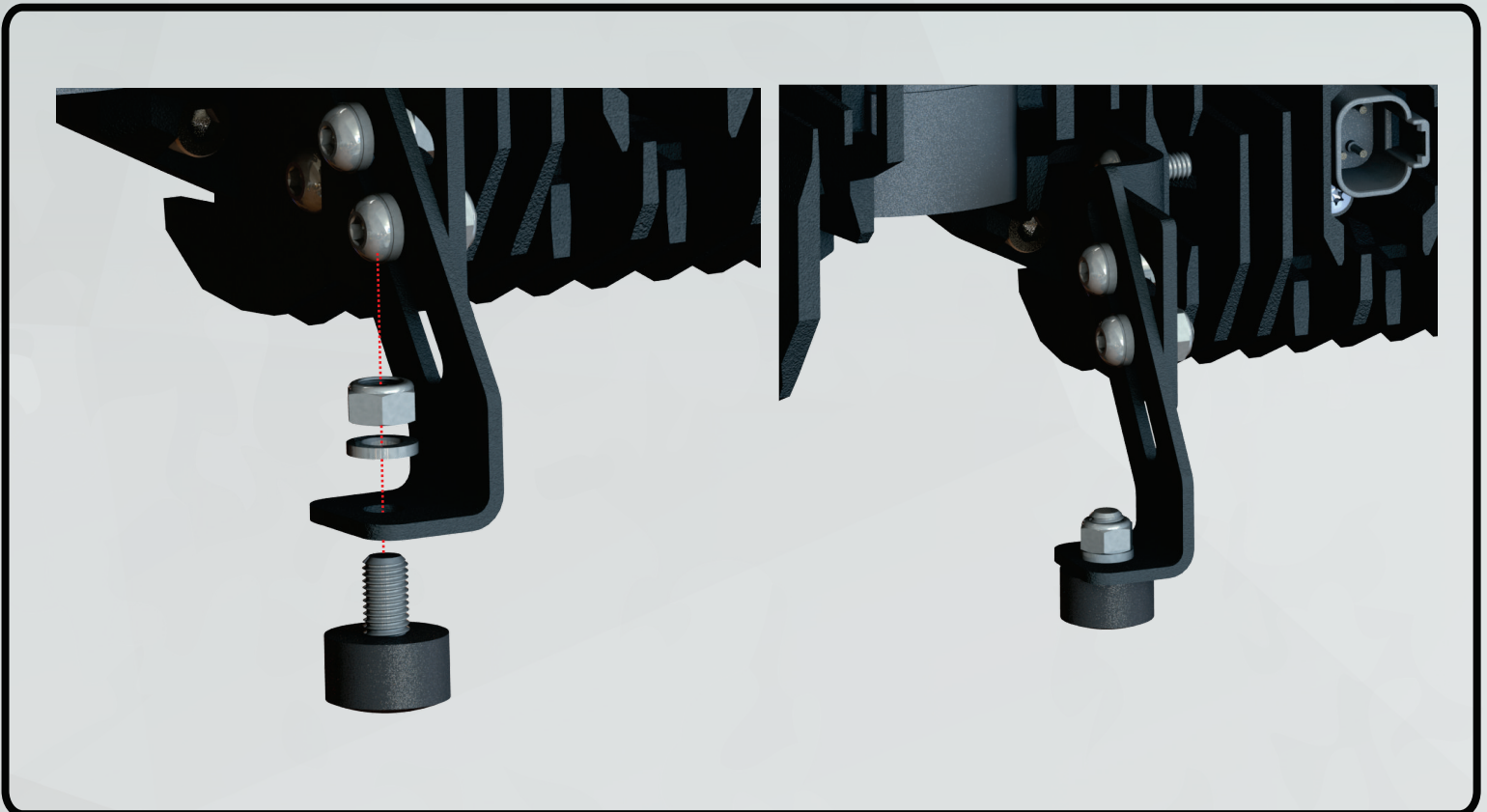


12. Mate the support bracket leg against the base as shown. Fit 2x M6 x 16mm screws, 4x M6 washers, and 2x M6 lock nuts as shown. Use a 4mm hex bit and 10mm socket or wrench to snug. Do not fully tighten!

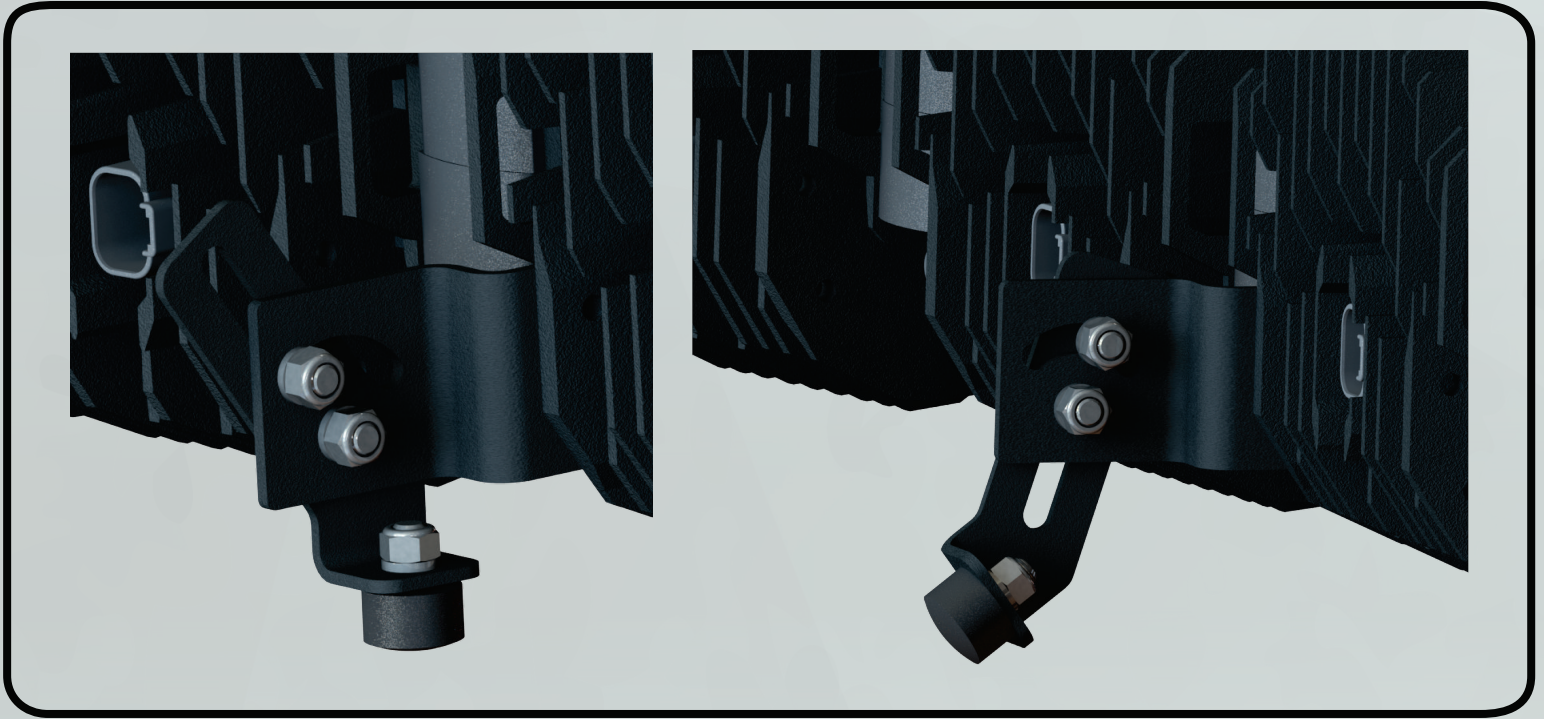


13. Fit the rubber bumper through the support leg, place an M6 washer and M6 lock nut. Using your hands or pliers, fully tighten the lock nut using a 10mm socket or wrench.

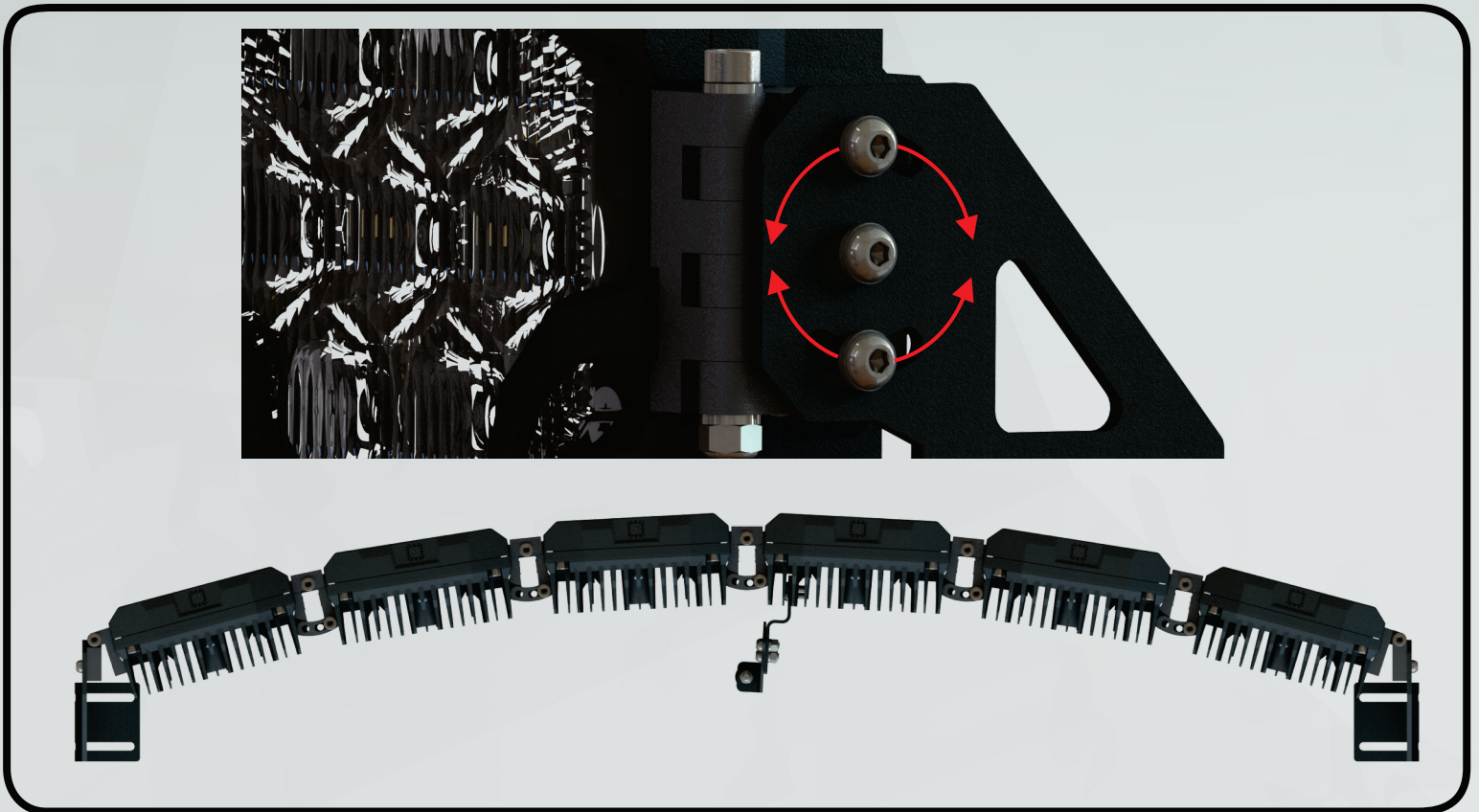
To set the preload for the support bracket, pull upwards on the mounted BigBanger bar and adjust the support bracket leg until it is pressed against the surface. Tighten the support bracket leg to the base and release the BigBanger Bar. Sufficient preload should be applied to the support bracket and vibration should be reduced across the BigBanger Bar.



14. When installing the BigBanger bar to the vehicle, the support leg can be configured by flipping its orientation as needed (shown below).



15. The end mounts can be mounted to the vehicle using M6 bolts, screws, or existing studs. The slots in the steel brackets allow for the curvature of the bar. If necessary, the steel brackets can be swapped L/R to increase or decrease the mounting location width. Fit the bar to your vehicle, adjust aim and curvature, and then tighten all bolts until snug. Do not overtighten.



-END-