

UNIVERSAL TRUCK BED SPARE TIRE CARRIER

Thank you for choosing Rough Country for all your vehicle needs.

Please read instructions before beginning installation. Check the kit hardware against the kit contents shown below. Be sure you have all needed parts and know where they go.

If question exist, please call us @1-800-222-7023. We will be happy to answer any questions concerning this product.

Check all fasteners for proper torque. Check to ensure for adequate clearance between all components.

Periodically check all hardware for tightness.

Kit Contents:

- 1 - Tire Mount
- 1 - Tire Retention Strap
- 4 - Bed Mount Brackets

Hardware Included:

- 12 - 3/8" x 1" Button Head Allen Bolt
- 8 - 3/8" Body Clip

Tools Required:

- Drill Motor
- 13/32" Drill
- Paint Pen
- 7/32" Allen Wrench
- 9/16" Wrench



Torque Specs:

Size	Grade 5	Grade 8	Size	Class 8.8	Class 10.9
5/16"	15 ft/lbs	20ft/lbs	6MM	5ft/lbs	9ft/lbs
3/8"	30 ft/lbs	35ft/lbs	8MM	18ft/lbs	23ft/lbs
7/16"	45 ft/lbs	60ft/lbs	10MM	32ft/lbs	45ft/lbs
1/2"	65 ft/lbs	90ft/lbs	12MM	55ft/lbs	75ft/lbs
9/16"	95 ft/lbs	130ft/lbs	14MM	85ft/lbs	120ft/lbs
5/8"	135ft/lbs	175ft/lbs	16MM	130ft/lbs	165ft/lbs
3/4"	185ft/lbs	280ft/lbs	18MM	170ft/lbs	240ft/lbs



INSTALLATION INSTRUCTONS

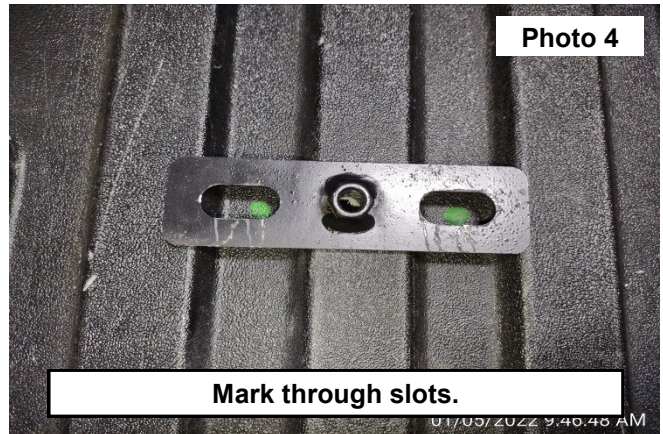
1. Place tire mount in desired location in the truck bed. Place spare tire in the mount so there is room between the bed and the tire. See Photo 1.
2. Once a location is chosen, look under the truck bed to make sure nothing will be damaged when drilling (gas tank, stock spare tire, brake lines, gas lines, etc.)
3. Use a paint pen to mark first drilling locations. NOTE: First drill locations must be on the truck bed stiffening ribs. See Photo 2.

▲ NOTICE

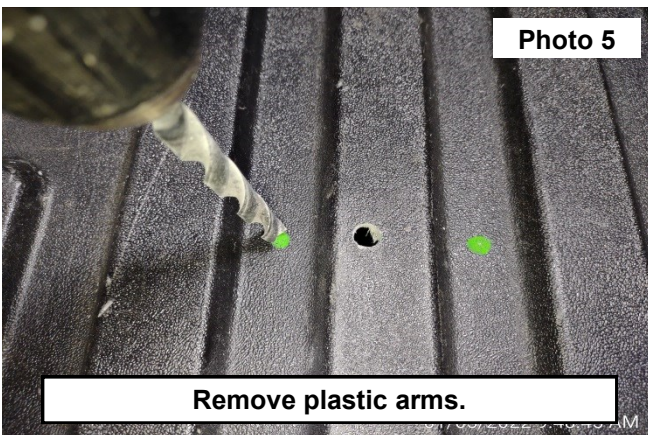
Trucks with composite beds must also avoid drilling into the support webbing



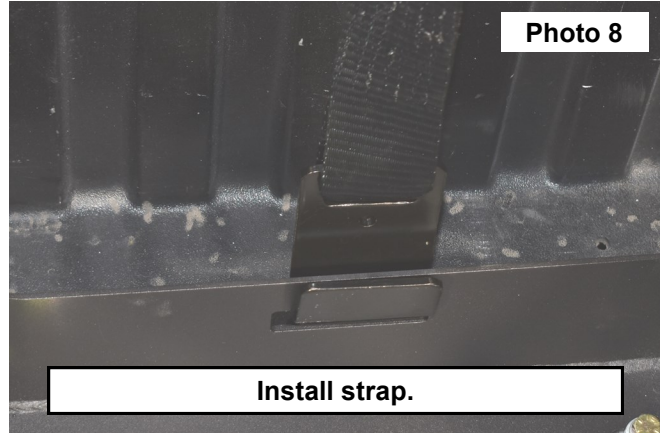
4. Remove spare tire and tire mount from the truck bed.
5. Use a 13/32" drill to make a hole in the four (4) marked locations. Clean up debris when finished. See Photo 3.
6. Place bed mount brackets over the previously drilled hole to mark two (2) additional drill locations per bracket with a paint pen. NOTE: These new holes will be in the truck bed valleys. See Photo 4.



7. Drill the remaining marked locations with a 13/32" drill. See Photo 5.
8. Install the supplied clip nuts (2) to the bed mount bracket and install the supplied 3/8" x 1" button head bolts (2) and flat washers (4) to the bed mount brackets using a 7/32" Allen wrench. See Photo 6.
9. Repeat for remaining three (3) mounting brackets.



10. Install the supplied 3/8" x 1" button head bolt to secure the tire mount to the bed. See Photo 7.
11. Hook the strap end without the ratcheting mechanism to the rear end of the tire mount. See Photo 8.
12. Install spare tire and tighten with ratchet mechanism.



By purchasing any item sold by Rough Country, LLC, the buyer expressly warrants that he/she is in compliance with all applicable, State, and Local laws and regulations regarding the purchase, ownership, and use of the item. It shall be the buyers responsibility to comply with all Federal, State and Local laws governing the sales of any items listed, illustrated or sold. The buyer expressly agrees to indemnify and hold harmless Rough Country, LLC for all claims resulting directly or indirectly from the purchase, ownership, or use of the items.

