



CS-FSBD-LVL-17
Ford Leveling Sway Bar Drop Kit

Fitment
2017+ F250/350 4x4

Carli Suspension, Inc.
596 Crane St.
Lake Elsinore, CA 92530
888-992-2754

Note

Please review the product instructions prior to attempting installation to ensure installer is equipped with all tools and capabilities necessary to complete the product installation. We recommend thoroughly reading the instructions at least twice prior to attempting installation.

Before beginning disassembly of the vehicle, check the "What's Included" section of the instructions to ensure you've received all parts necessary to complete installation. Further, verify that the parts received are PROPER TO YOUR application (year range, motor, etc.) to avoid potential down-time in correcting potential discrepancies. Any discrepancies will be handled by Carli Suspension and the correcting products will be shipped UPS Ground.

Lifetime Product Warranty

Carli Suspension provides a limited lifetime product warranty against defects in workmanship and materials from date of purchase to the original purchaser for all products produced by Carli Suspension. Parts not manufactured by, but made to Carli Suspension's specifications by third party manufacturers will carry a warranty through their respective manufacturer. (i.e. King Shocks, Bilstein Shocks, Fox Shocks). Deaver Leaf Spring's warranty will be processed by Carli Suspension.

Proof of purchase (from the original purchaser only) will be required to process any warranty claims. Carli Suspension products must be purchased for the listed Retail Price reflected by the price listed on the Carli Suspension Website at the time of purchase. Carli Suspension reserves the right to refuse warranty claims made by any customer refusing or unable to present proof of purchase, or presenting proof of purchase reflecting a price lower than Carli Suspension's Retail Price at the time the item was purchased.

Carli Suspension's Limited Lifetime Warranty excludes the following parts which are subject to wear: Track Bar Bushings, Track Bar Heim Joints, Limit Straps, Control Arm Bushings, Radius Arm Bushings, Shock Bushings, Sway Bar End Link Heim Joints, Shock Seals, Shock Bearings, and Corrosion on Shock Shafts or Bodies. These items will be warranted for a period of 60 days from the date of purchase only if determined to be installed properly signifying manufacturing defect. Carli Suspension cannot warrant a product's cosmetic finish due to the varying extreme elements that may be encountered.

Any alterations, modifications, or improper installation, of the product will void this warranty. Products should be inspected for defect upon receipt and approved before installation. Any defect in NEW product will be warranted if returned before installation in its original packaging. Carli Suspension's obligation under this warranty is limited to the repair or replacement of the defective product only. All costs of removal, installation or reinstallation, freight charges, incidental or consequential damage are expressly excluded from this warranty.

Carli Suspension is not responsible for damages and/or warranty of other vehicle parts related or non-related to the installed Carli Suspension product. This warranty shall not apply to any product that has been subjected to accident, negligence, alteration, abuse or misuse as determined by Carli Suspension. Carli Suspension reserves the right to refuse warranty claims if produced parts are combined and/or substituted with other aftermarket suspension products. Combination and/or substitution of other aftermarket suspension components may cause premature wear and/or product failure. Carli Suspension reserves the right to change/alter product without obligation to update any previously purchased products.

Parts Checklist

- (Qty. 2) - Carli Sway Bar Drop Brackets
- (Qty. 2) - Captured Nut Brackets
- (Qty. 4) - 3/8"-16 x 1" Grade 8 Bolt
- (Qty. 4) - 3/4" Grade 8 Flat Washer



CS-FSBD-LVL-17 Ford Leveling Sway Bar Drop Kit

Carli Suspension, Inc.
596 Crane St.
Lake Elsinore, CA 92530
888-992-2754

Disassembly Instructions

1. If not already disconnected, use a 18mm Socket to remove the nut securing the sway bar to the end link on both sides. Pull the sway bar up and out of the way.
2. Using the 15mm socket, remove the 4 nuts holding the sway bar to the frame. We recommend using a hand ratchet for these to avoid breaking the capture-bolts from their bracket.
3. Remove the sway bar from the vehicle.
4. Remove the 4 capture bolts from the frame rail



Installation Instructions

1. Insert the provided captured-nut bracket (pictured black powder coated, production models will be ZINC) into the frame rail. The insert has 2 roll-pins installed to index it into the opening and it should otherwise fit flush against the frame rail with the threaded inserts facing upward into the frame. Insert the bracket into the frame hole from which the front capture-bolt was removed.



2. Install one of the 3/8" x 1" bolts (with a washer) a couple turns into the rear hole of the bracket that was inserted into the frame.
3. Use a 9/16" shallow socket to an extension and insert the 3/8" x 1" bolt and washer into the socket. The Sway Bar Drops are slotted at the rear to allow easy installation. Slide the drop bracket in place so the pre-installed bolt fits into the slot at the rear of the sway bar drop, then set the drop bracket flat against the frame rail and use the extension/socket to install the forward bolt into the front hole of the drop bracket.
4. Once the sway bar drop is in place, hand tight, torque both 3/8" bolts to 30 lb/ft.



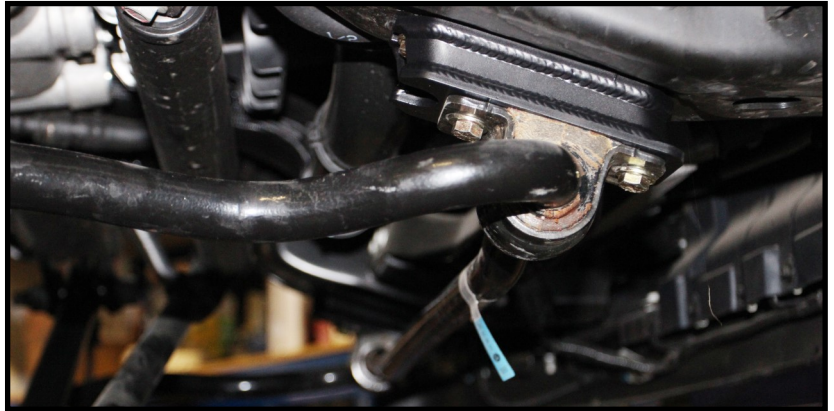


CS-FSBD-LVL-17
Ford Leveling Sway Bar Drop Kit

Carli Suspension, Inc.
596 Crane St.
Lake Elsinore, CA 92530
888-992-2754

Installation Instructions

5. Reinstall the Factory sway bar to the Carli drop bracket's threaded inserts with the remaining (qty. 4) provided 3/8 x 1" bolts and washers.
6. Torque to 30 lb./ft.



6. Insert the provided gold spacer onto the top of the factory end link, then pull Sway Bar down onto the top of the End Link and secure with the factory hardware.
7. Torque to 30 lb./ft.
8. Double check end link/Carli brake line clearance to ensure no contact. The metal bracket on the brake lines can be manipulated to ensure clearance.

