



PORTABLE AIR COMPRESSOR

Thank you for choosing Rough Country for all your vehicle needs.

Please read instructions before beginning installation. Check the kit hardware against the kit contents shown below. Be sure you have all needed parts and know where they go.

If question exist, please call us @1-800-222-7023. We will be happy to answer any questions concerning this product. Check all fasteners for proper torque. Check to ensure for adequate clearance between all components. Periodically check all hardware for tightness.



Torque Specs:

Size	Grade 5	Grade 8	Size	Class 8.8	Class 10.9
5/16"	15 ft/lbs	20ft/lbs	6MM	5ft/lbs	9ft/lbs
3/8"	30 ft/lbs	35ft/lbs	8MM	18ft/lbs	23ft/lbs
7/16"	45 ft/lbs	60ft/lbs	10MM	32ft/lbs	45ft/lbs
1/2"	65 ft/lbs	90ft/lbs	12MM	55ft/lbs	75ft/lbs
9/16"	95 ft/lbs	130ft/lbs	14MM	85ft/lbs	120ft/lbs
5/8"	135ft/lbs	175ft/lbs	16MM	130ft/lbs	165ft/lbs
3/4"	185ft/lbs	280ft/lbs	18MM	170ft/lbs	240ft/lbs



Kit Contents

- **Air compressor and air tank mounted to a waterproof carry case**
- **Nylon storage compartment**
- **20' air hose with male to female fittings**
- **Tire inflator with pressure gauge**

SPECIFICATIONS

GENERAL SPECS	IMPERIAL	METRIC
SUPPLY VOLTAGE	12V DC	12V DC
MAX CURRENT DRAW (each motor)	34.3A @ 150 PSI	34.3A @ 1030 kPa
MAX CURRENT DRAW (total)	68.6A @ 150 PSI	68.6A @ 1030 kPa
FUSE RATING (each motor)	40A	40A
RELAY RATING (each motor)	40A	40A
WEIGHT	33 lbs	15 kg
DIMENSIONS: -LENGTH	18.8 in	478 mm
-WIDTH	14 in	355 mm
-HEIGHT	7.3 in	186 mm
PRESSURE SWITCH CLOSED	< 135 PSI	< 930 kPa
PRESSURE SWITCH OPEN	> 150 PSI	> 1030 kPa
SAFETY VALVE PRESSURE	> 180 PSI	> 1240 kPa
MOTOR THERMAL CUT-OUT	239°F	115°C
MAX AMBIENT TEMPERATURE	212°F	100°C
SPECS @ NO LOAD	IMPREIAL @ 0 PSI	METRIC @ 0 kPa
CURRENT DRAW	28.4A	28.4A
AIR FLOW RATE	6.16 CFM	174.4 LPM
SPECS @ TIRE PRESSURE	IMPREIAL @ 29 PSI	METRIC @ 200 kPa
CURRENT DRAW	50.4A	50.4A
AIR FLOW RATE	4.68 CFM	131.8 LPM
EXTERNAL CONNECTION SPECS		
AIR INTAKE THREAD	1/4 - 18 NPSC	
AIR FILTER THREAD	1/4 - 18 NPT	
PRESSURE SWITCH THREAD	1/4 - 18 NPT	
SAFETY VALVE PORT THREAD	1/8 BSPP	
MANIFOLD OUTLET THREAD	1/4 - 18 NPT	
STAINLESS BRAIDED HOSES	JIC-4 [AN-4]	
AIR COUPLING FITTING TYPE	US INDUSTRIAL STANDARD	
(INTERNATIONAL EQUIVALENT STANDARDS)	ISO 6150 B	
	RECTUS 23/24/1400	
	TEGMA 1400	
	LEGRIS 23	
	DYNAQUIP D3	
	CEJN 310	
	US.MIL.C 4109	
	NORMA / AFNOR: NF.E49.053	
	AIGNEP 220	
	HANSEN 3000	
	NORGREN 237	
	GROMELLE 600	

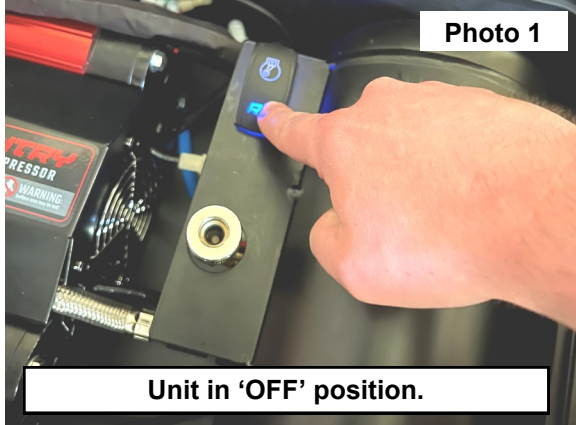
SAFETY

- Never connect the compressor to the battery with the switch in the 'ON' position as the resulting sparking near the battery terminal can lead to a fire hazard
- Wear suitable protective equipment to reduce the risk of injury due to projectile particles.
- Never point the hose at anyone and make sure bystanders are out of the line of air flow.
- Never stop or slow the flow of compressed air using direct exposure to skin.
- Never use compressed air to clean clothing, body, or hair.
- Disconnecting hoses or other accessories from the system can result in projectiles.
- Use products and hose fittings that conform to safety standards.
- Use air hoses that have a high temperature rating and pressure rating over 200 PSI [1380 kPa]
- Secure air hose to prevent whipping
- Do not use the compressed air for respiratory protective devices
- System contains two pressure relief valves that will bleed off pressure when the system is above 160 PSI [1100 kPa]
- Avoid impacts with the air tank.
- If the air tank suffers any damage, replace immediately.
- Product may become hot after extended use.

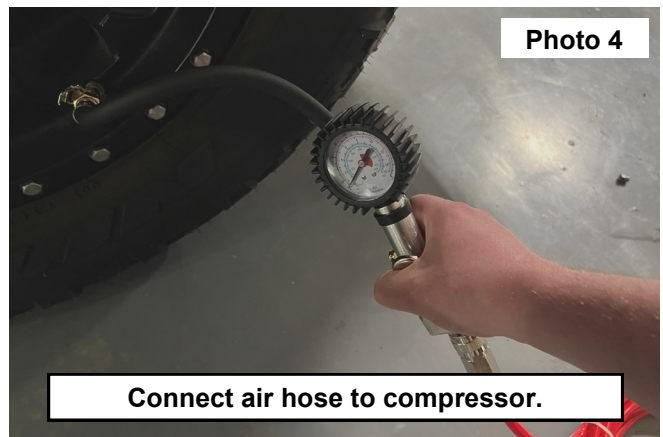
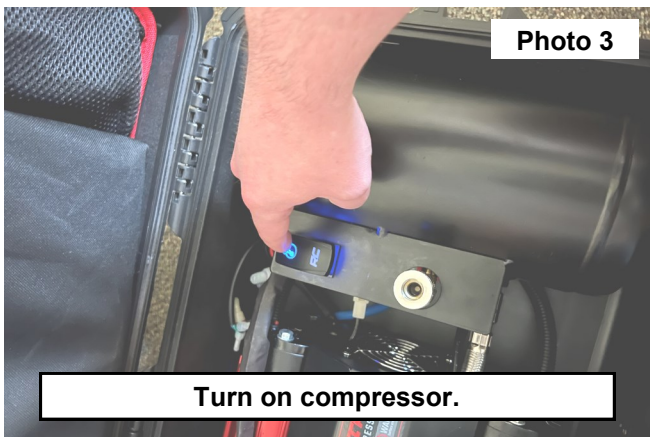


INSTALLATION INSTRUCTONS

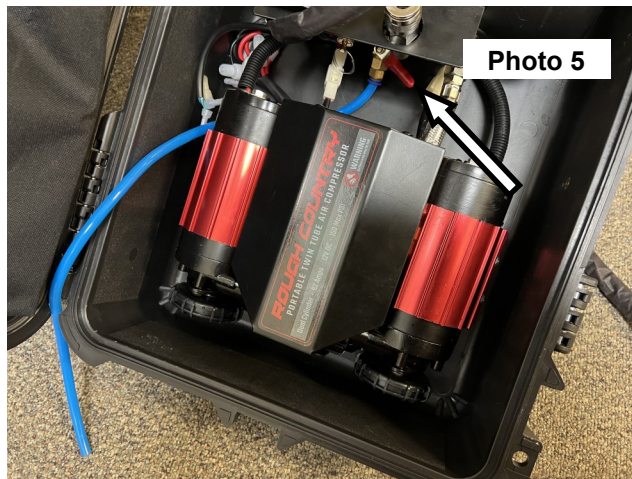
1. Position the waterproof carry box on a flat surface before opening.
2. Open the box by undoing the four latches surrounding the box.
3. Make sure the switch is in the 'OFF' position by pressing down on the bottom of the rocker switch. **See Photo 1.**
4. Unwind the power cable and connect the red alligator clamp (+) directly to the positive (+) terminal of the vehicle battery.
5. Connect the black alligator clamp (-) directly to the negative (-) battery terminal on the vehicle. **NOTE:** When the unit is powered, the rocker switch will be illuminated.
6. Connect the supplied air hose to the compressor by inserting the hose male air fitting into the compressor female air fitting. **See Photo 2.**



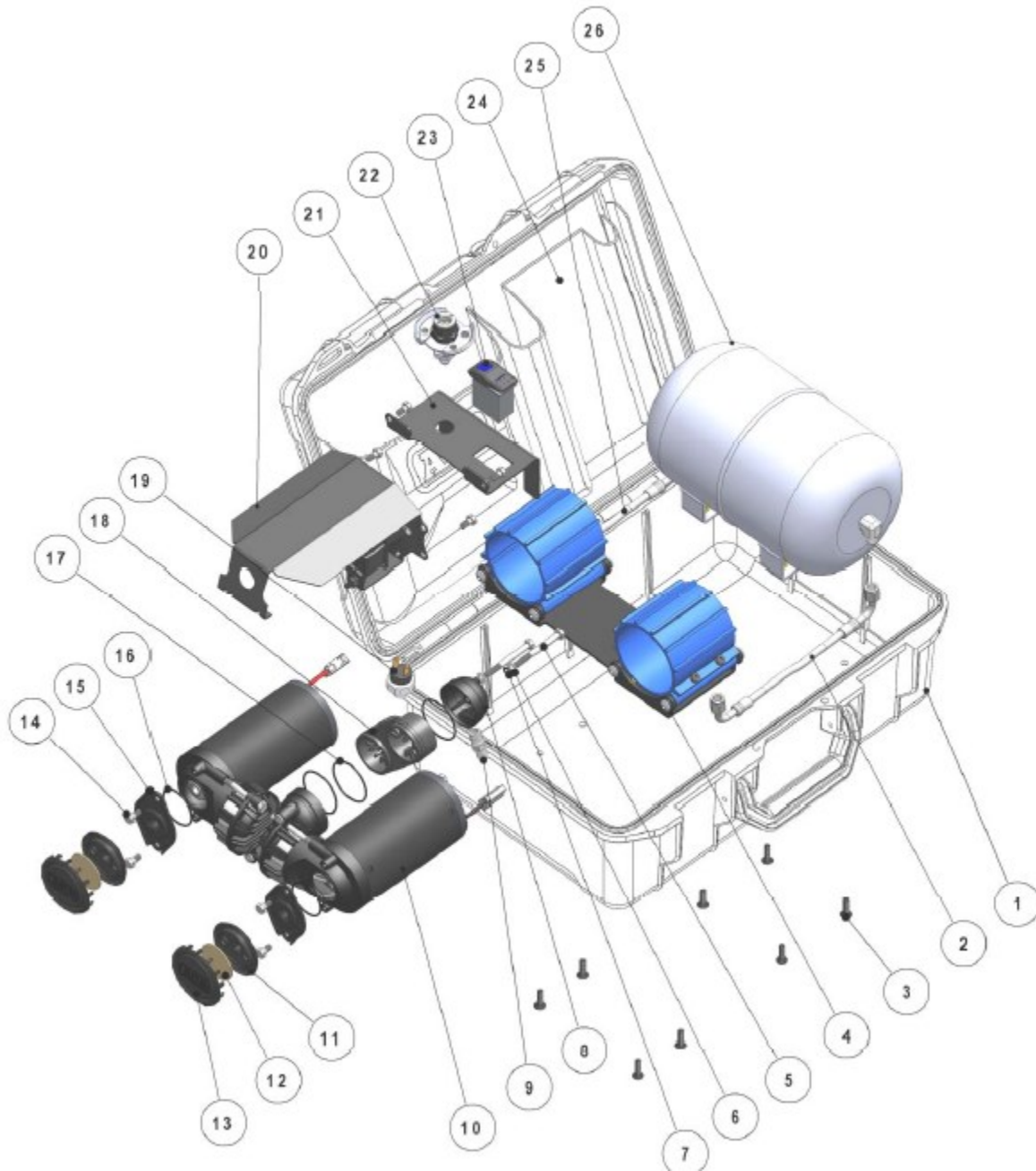
7. Attach desired air accessory to the opposite end of the hose.
8. Press the top of the rocker switch down to turn on the compressor and pressurize the tank. **See Photo 3.** **NOTE:** The compressor will automatically stop when the pressure in the system reaches 1501 PSI [1030 kPa].
9. Unit comes with an air tool to check tire pressure and add air to the tires as needed. Connect the tool to the female end of the air hose. Attach brass end of tool to the tire valve. Squeeze paddle on tool to inflate tire. **See Photo 4.**



10. Moisture can accumulate in the air tank. It is recommended to drain the tank after 10-20 hours of run time. Connect the unit to power following **Steps 5 and 6.** Tilt the carry case so the rubber hose is pointed down to the ground. **NOTE:** Hose is blue for display purposes. Turn the red lever to release the air and moisture trapped in the tank. **See Photo 5.**



EXPLODED VIEW



By purchasing any item sold by Rough Country, LLC, the buyer expressly warrants that he/she is in compliance with all applicable, State, and Local laws and regulations regarding the purchase, ownership, and use of the item. It shall be the buyers responsibility to comply with all Federal, State and Local laws governing the sales of any items listed, illustrated or sold. The buyer expressly agrees to indemnify and hold harmless Rough Country, LLC for all claims resulting directly or indirectly from the purchase, ownership, or use of the items.

