

ROUGH COUNTRY

SUSPENSION SYSTEMS®

Bronco Front Camera Relocation

Thank you for choosing Rough Country for all of your suspension needs.

Rough Country recommends that a certified technician install this system. In addition to these instructions, professional knowledge of disassemble/reassembly procedures as well as post installation checks must be known. Attempts to install this system without this knowledge and expertise may jeopardize the integrity and/or operating safety of the vehicle. Please read all the instructions before beginning the installation. Check the kit hardware against the "Kit Contents" list below. If question exist, please call us @1-800-222-7023. We will be happy to answer any questions concerning this product. Check all fasteners for proper torque. Check to ensure for adequate clearance between all components. Check and retighten wheels at 50 miles and again at 500 miles. Periodically check all hardware for tightness. Be sure you have all the needed parts and understand where they go. Also, please review the "Tools Needed" list to be certain you have the necessary tools to complete the installation.

NOTICE TO DEALER AND VEHICLE OWNER

Any vehicle equipped with any Rough country product must have the "Warning to Driver" decal installed on the sun visor or dash. The decal is to act as a constant reminder for whoever is operating the vehicle of its unique handling characteristics. **INSTALLING DEALER**—It is your responsibility to install the warning decal and to forward these installation instructions on too the vehicle owner for review and to be kept in the vehicle for its service life.



Bronco Front Camera Relocation

TOOLS NEEDED:

Wire Cutters

Allen Wrench

5mm
8mm

Torx Bit

T30

Wrench/Socket

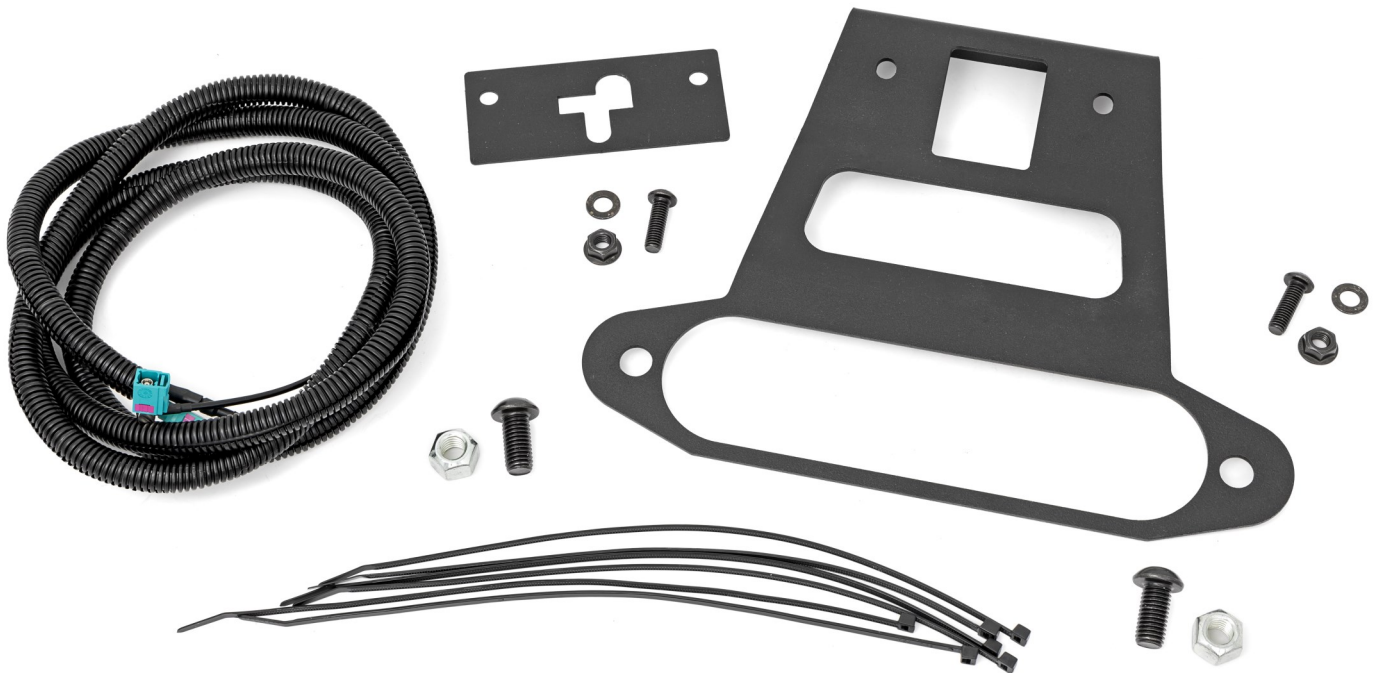
10mm
19mm

KIT CONTENTS:

Camera Bracket
Clamp Bracket
Camera Cable
Washer Hose

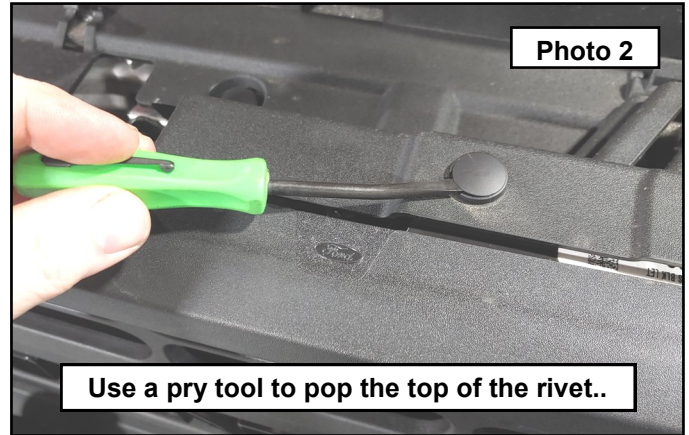
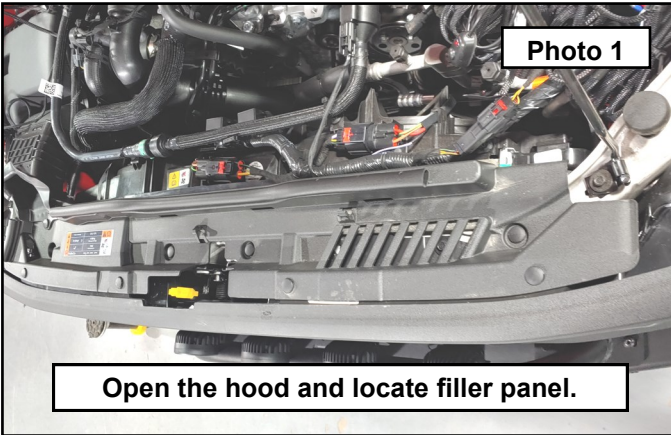
HARDWARE INCLUDED:

8mm Button Head Bolt (2)
8mm Washer (2)
8mm Flange Nut (2)
12mm Button Head Bolt (2)
12mm Locking Jam Nut (2)
11" Zip Tie (6)

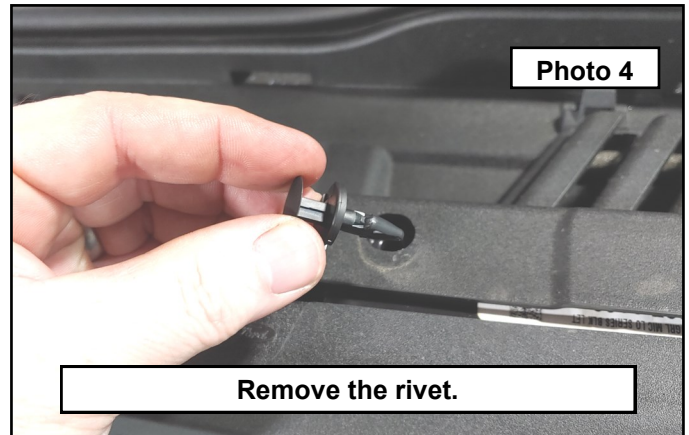
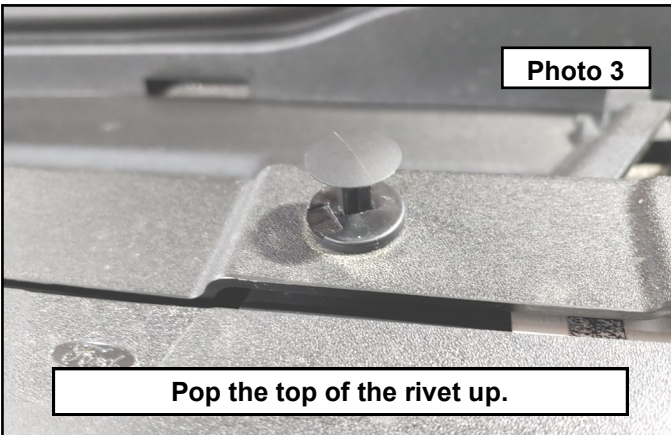


Front Installation

1. Park your vehicle on a clean flat surface, engage the parking brake and block the rear tires.
2. If there is any bumper, winch or combo that is blocking the grill, it will need to be removed from the vehicle to remove the grill. Open the hood and locate the front filler panel between the core support and grill. This is held in place with plastic rivets. **Photo 1**
3. Use a pry tool to pop the top of the rivets up. **Photo 2**



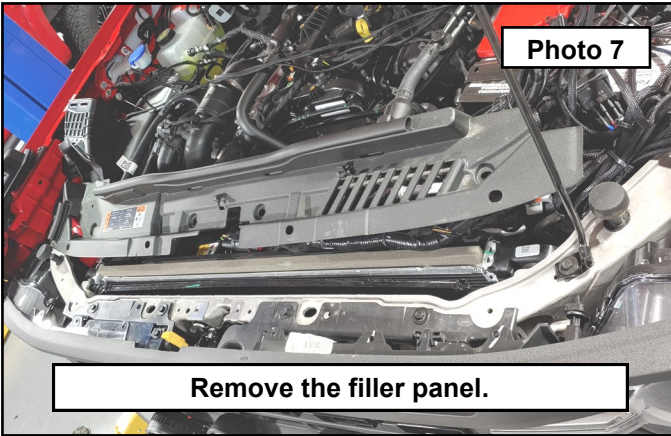
4. With the top of the rivet popped up, remove the rivet and set aside. **Photo 3 / 4**



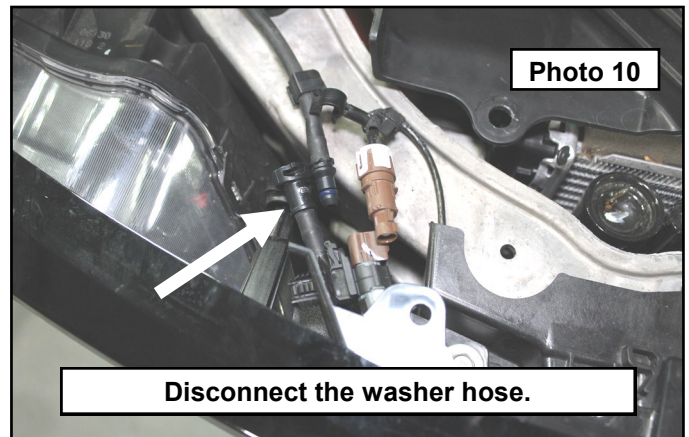
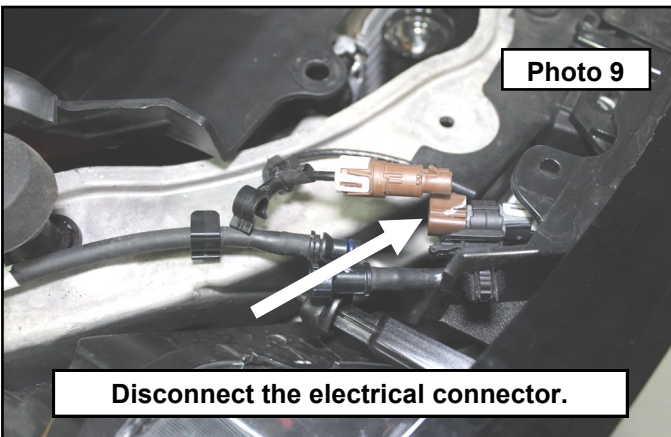
5. Remove the rivet holding the air intake boot in place. **Photo 5**
6. Pull the air intake boot off the airbox and set aside. **Photo 6**



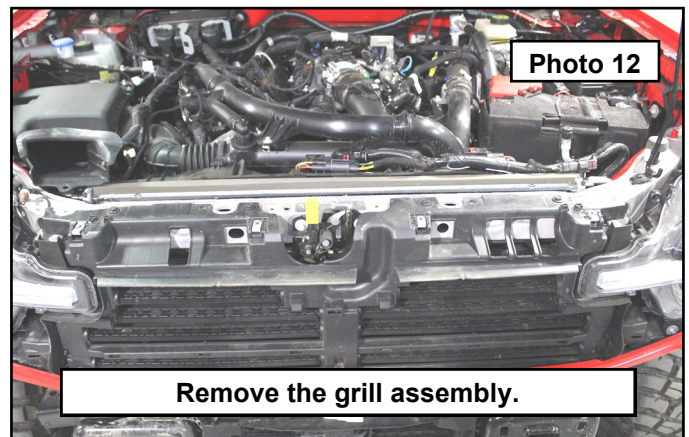
7. Remove the filler panel and set aside. **Photo 7**
8. Locate the bolts holding the grill shell in place. Remove using a 10mm socket. **Photo 8**



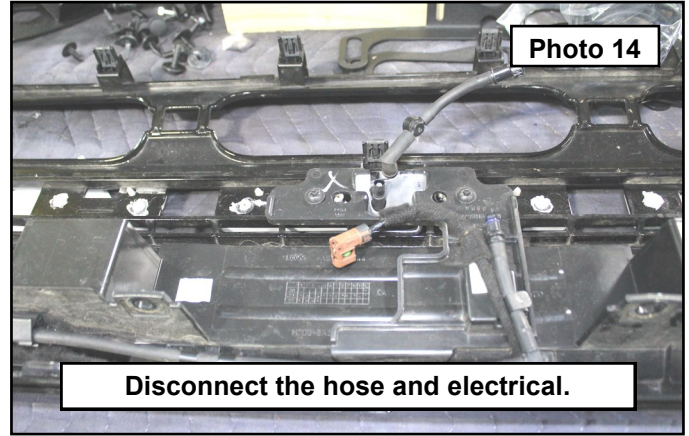
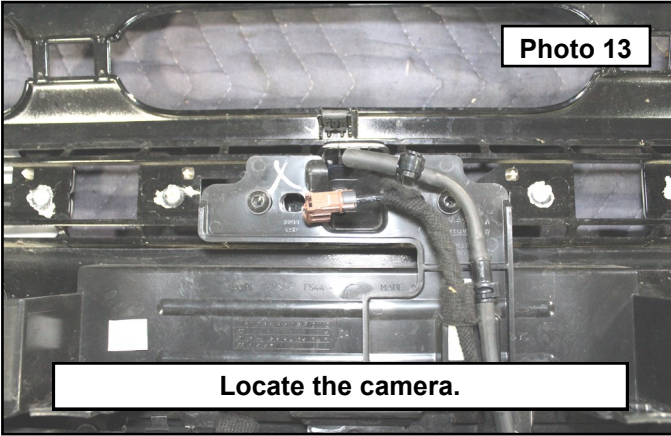
9. On the passenger side of the vehicle, locate and disconnect the camera electrical connector. **Photo 9**
10. Disconnect the washer hose by removing the quick disconnect. **Photo 10**



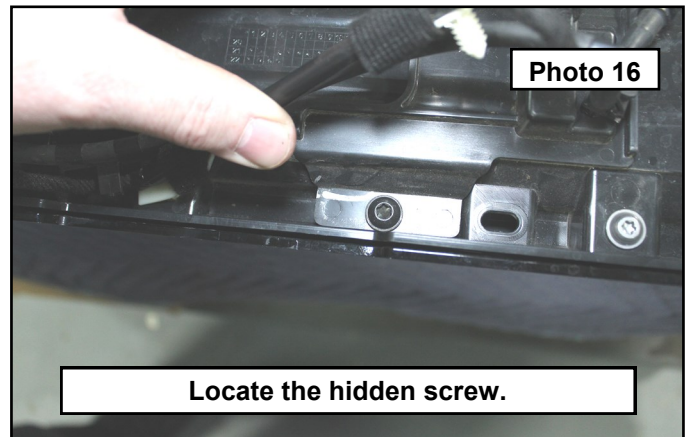
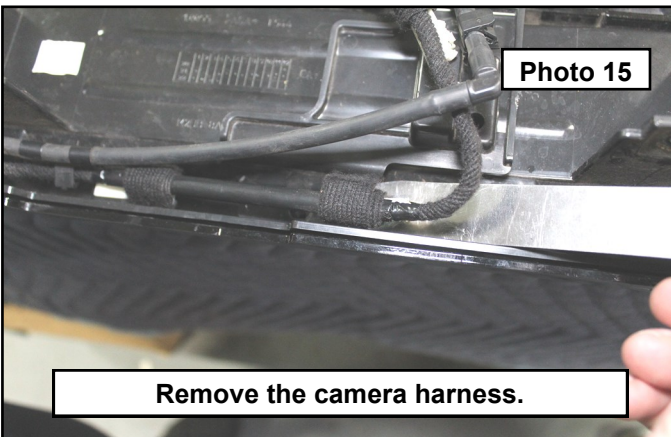
11. Grab the grill shell and pull away from the body and set onto a padded surface to protect the paint. It is held in place using clips around its perimeter. **Photo 11 / 12**



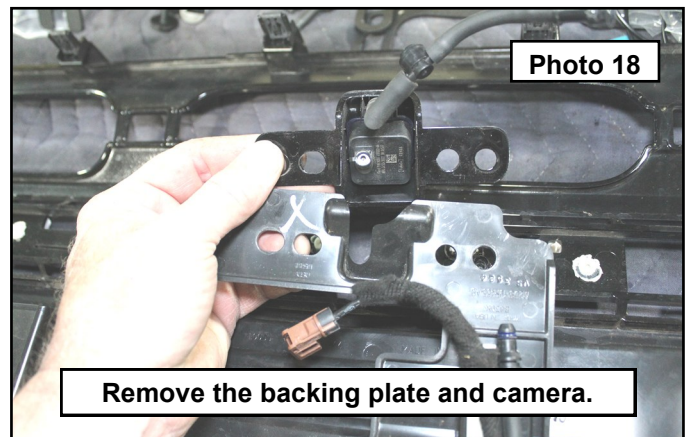
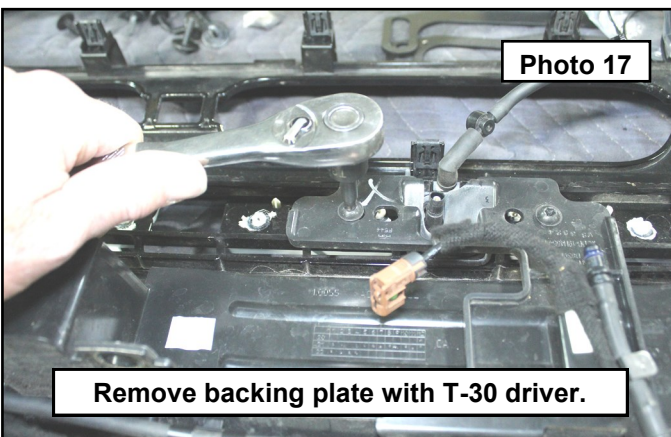
12. Lay face down and locate the camera in the center of the grill shell. Disconnect the electrical and washer hose from the camera. **Photo 13 /14**



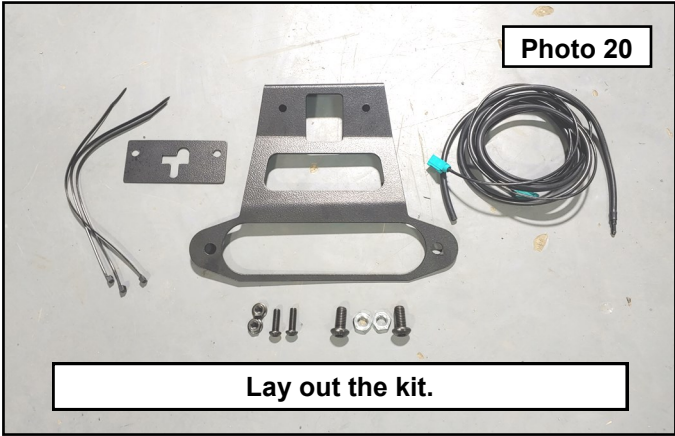
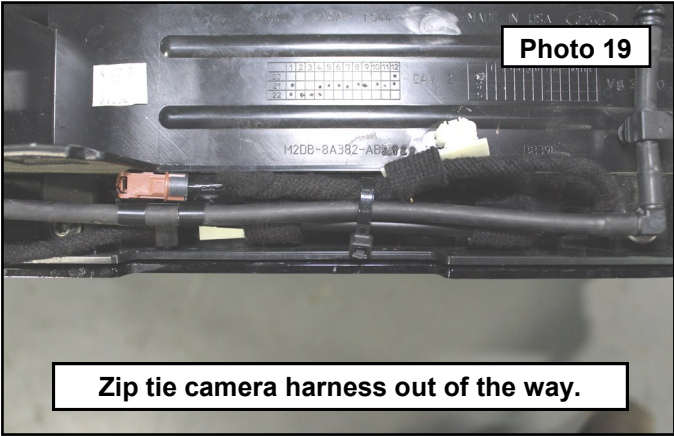
13. Use a pry tool to remove the camera harness from the upper grill shell. **Photo 15**
14. This is covering on of the screws holding the camera backing plate in place. **Photo 16**



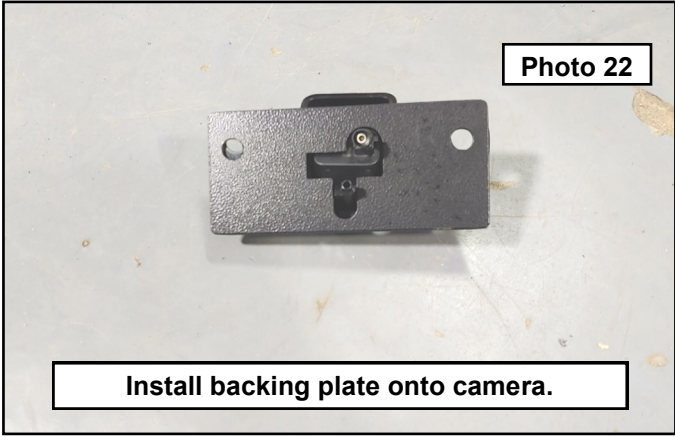
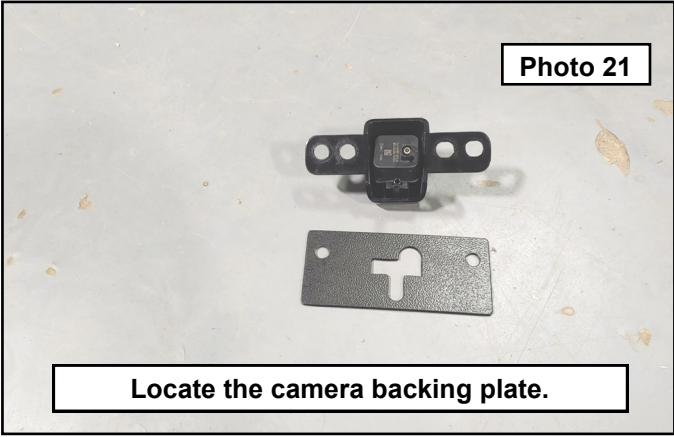
15. Remove the camera backing plate from the grill in three spots using a T-30 Torx driver. **Photo 17**
16. Remove the camera and backing plate from the grill shell. **Photo 18**



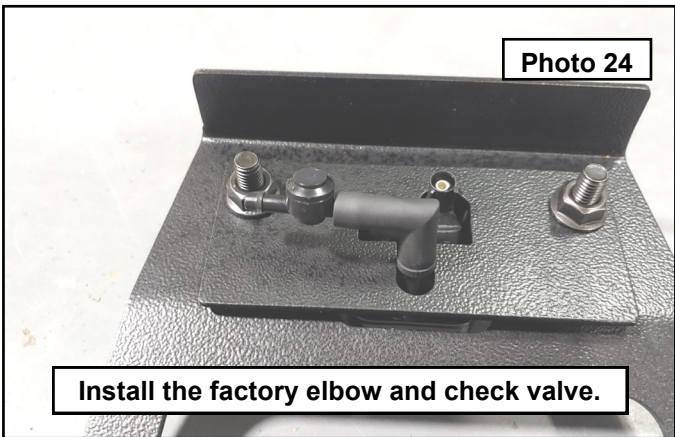
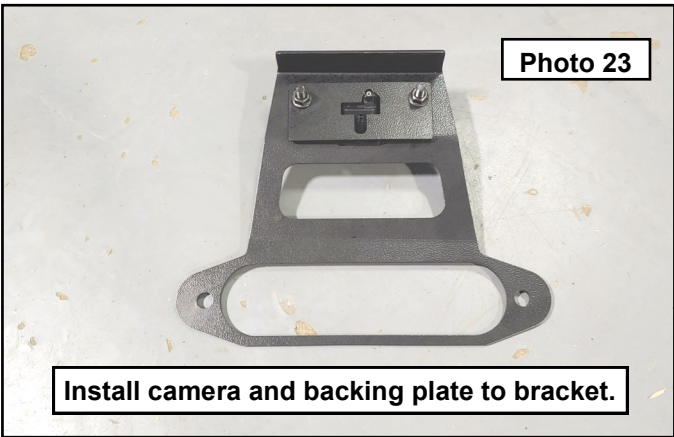
- 17. Fold the camera harness up and zip tie to itself out of the way. **Photo 19**
- 18. Lay out the camera relocation kit. **Photo 20**



- 19. Locate the camera backing plate and install to the back of the camera as shown. **Photo 21 / 22**

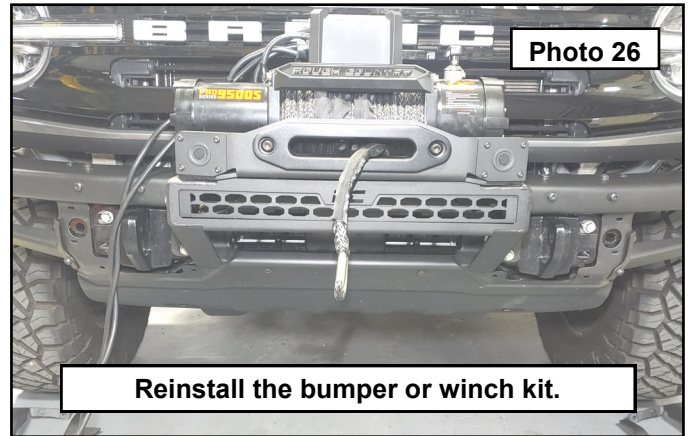
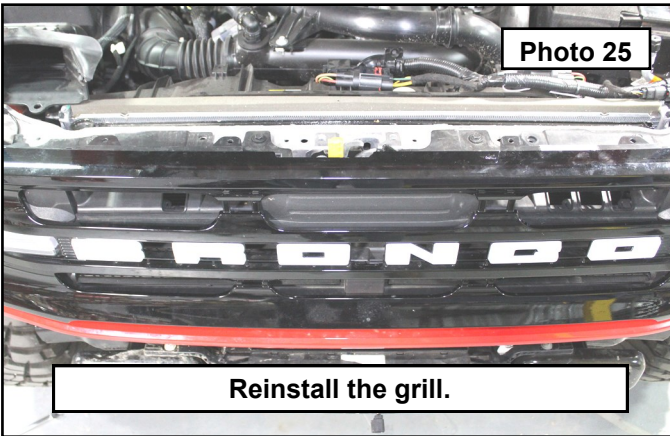


- 20. Install the camera with backing plate to the main bracket using the provided 8mm button head bolts, washers and flange nuts. **Photo 23**
- 21. Remove the 90 degree elbow and check valve from the washer line on the grill. Install to the camera as shown. **Photo 24**



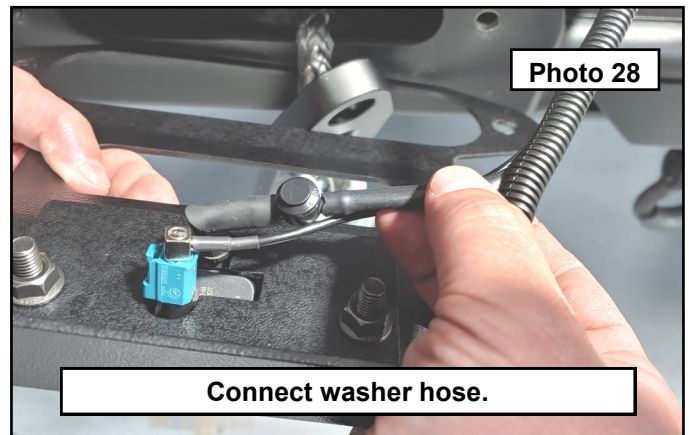
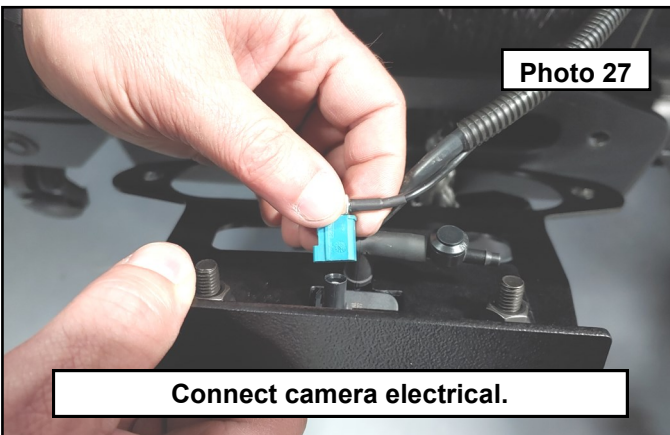
22. Reinstall the grill to the vehicle in the reverse order of disassembly. **Photo 25**

23. Reinstall the previously removed bumper or winch set up. **Photo 26**



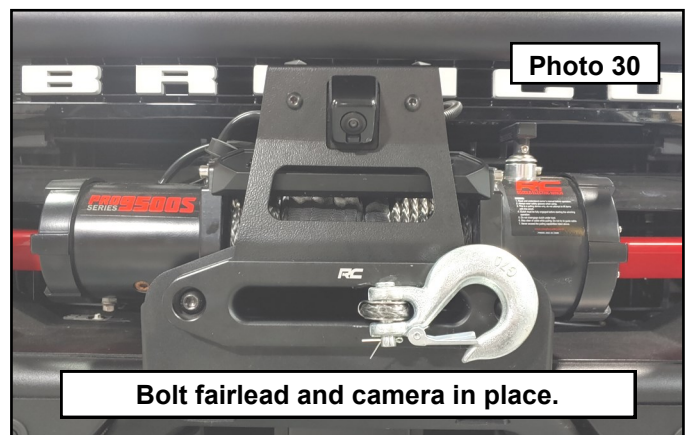
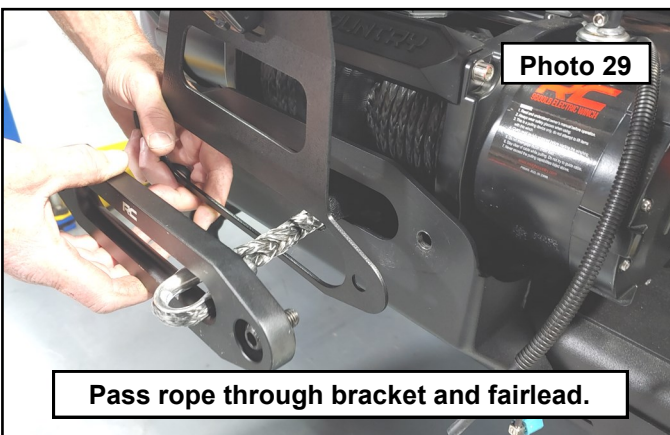
24. Connect the provided camera extension to the factory connector on the passenger side of the vehicle. Make sure to install the straight fitting here. Remove the quick disconnect fitting on the washer hose and plug in the provided coupler hose. The 90 degree fitting will be used at the camera. Drop the harness down between the headlight and the grill. Route the harness between the grill and the bumper, around the winch control box and let hang out front. Plug in the 90 degree electrical connector onto the camera. **Photo 27**

25. Attach the washer hose to the check valve nipple. You may need to trim the washer hose. **Photo 28**

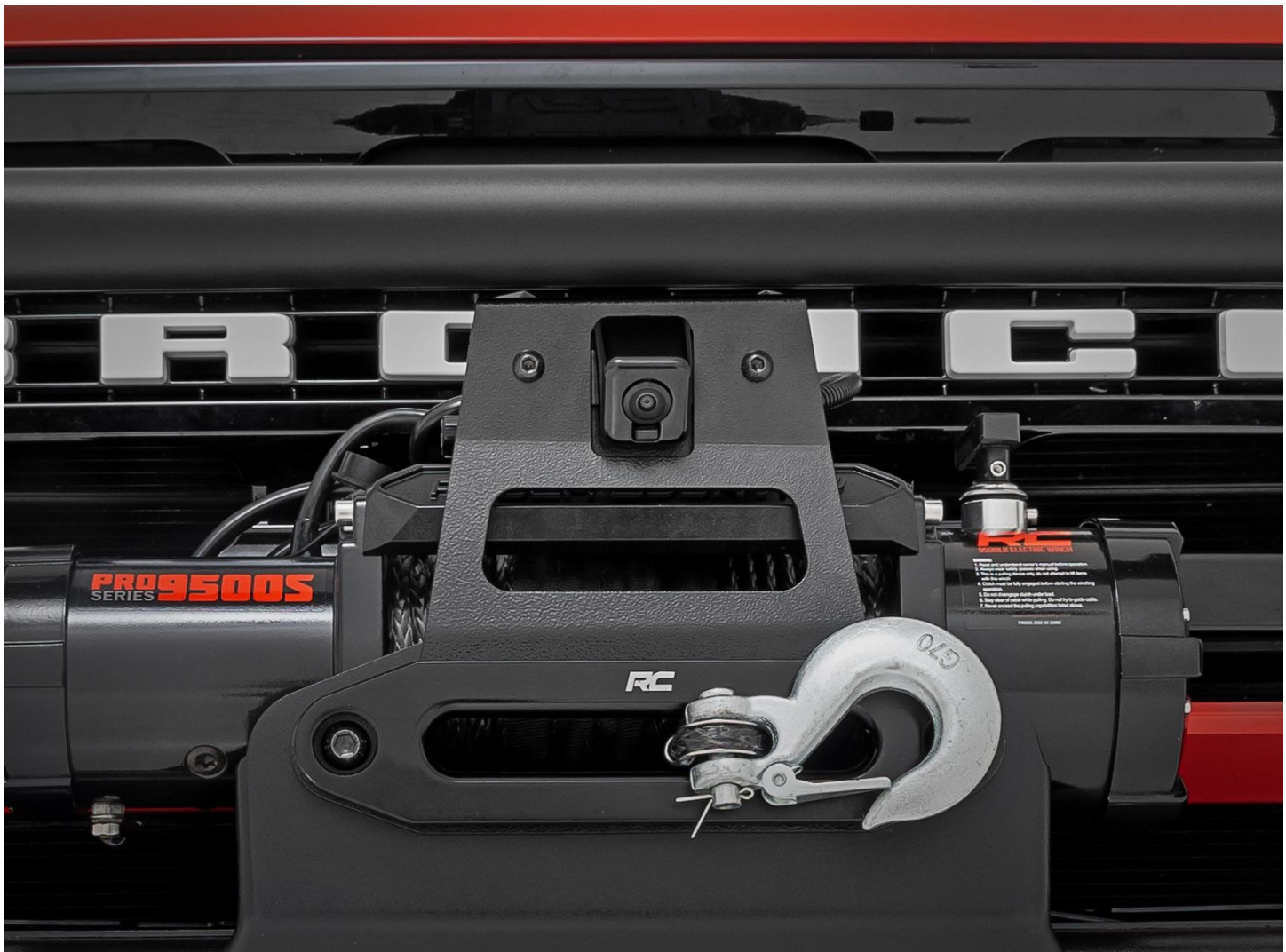
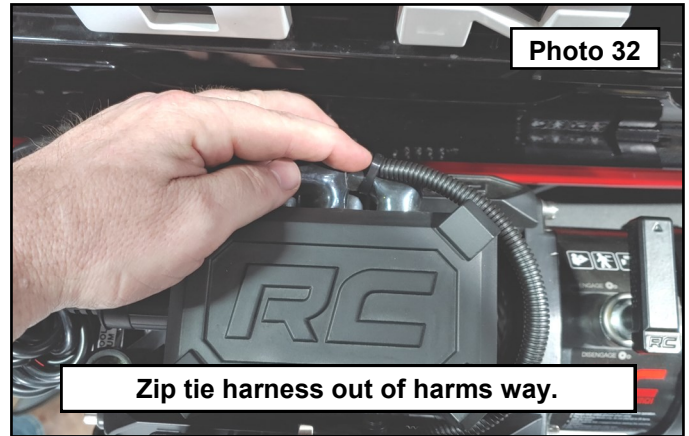
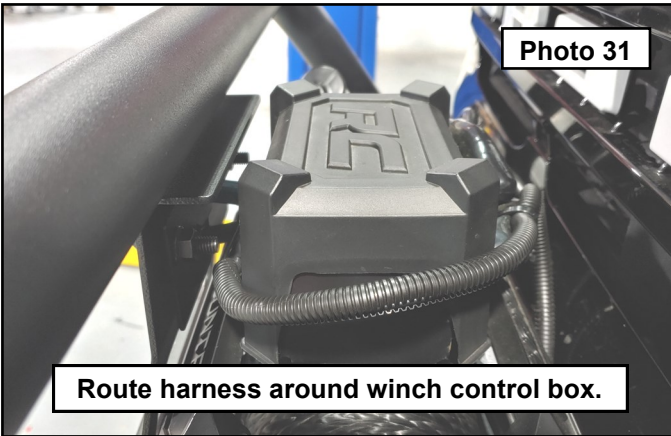


26. Pass the rope through the relocation bracket and fairlead. **Photo 29**

27. Bolt the fairlead to the winch tray or bumper using the provided 12mm button head bolts and the 12 mm locking jam nuts. Install the rope hook. **Photo 30**



28. Route the camera harness around the winch control box and zip tie out of harms way along its path back into the vehicles body. Cycle the ignition on and make sure the camera is operating as intended. **Photo 31 / 32**



By purchasing any item sold by Rough Country, LLC, the buyer expressly warrants that he/she is in compliance with all applicable , State, and Local laws and regulations regarding the purchase, ownership, and use of the item. It shall be the buyers responsibility to comply with all Federal, State and Local laws governing the sales of any items listed, illustrated or sold. The buyer expressly agrees to indemnify and hold harmless Rough Country, LLC for all claims resulting directly or indirectly from the purchase, ownership, or use of the items.