



## CS-FBDR-17 : Ford Rear Bump Drop

Fitment  
2017+ F250/350 4x4  
Add-a-Pack and Full Spring Pack

---

### Note

---

Please review the product instructions prior to attempting installation to ensure installer is equipped with all tools and capabilities necessary to complete the product installation. We recommend thoroughly reading the instructions at least twice prior to attempting installation.

Before beginning disassembly of the vehicle, check the "What's Included" section of the instructions to ensure you've received all parts necessary to complete installation. Further, verify that the parts received are PROPER TO YOUR application (year range, motor, etc.) to avoid potential down-time in correcting potential discrepancies. Any discrepancies will be handled by Carli Suspension and the correcting products will be shipped UPS Ground.

---

### Lifetime Product Warranty

---

Carli Suspension provides a limited lifetime product warranty against defects in workmanship and materials from date of purchase to the original purchaser for all products produced by Carli Suspension. Parts not manufactured by, but made to Carli Suspension's specifications by third party manufacturers will carry a warranty through their respective manufacturer. (i.e. King Shocks, Bilstein Shocks, Fox Shocks). Deaver Leaf Spring's warranty will be processed by Carli Suspension.

Proof of purchase (from the original purchaser only) will be required to process any warranty claims. Carli Suspension products must be purchased for the listed Retail Price reflected by the price listed on the Carli Suspension Website at the time of purchase. Carli Suspension reserves the right to refuse warranty claims made by any customer refusing or unable to present proof of purchase, or presenting proof of purchase reflecting a price lower than Carli Suspension's Retail Price at the time the item was purchased.

Carli Suspension's Limited Lifetime Warranty excludes the following parts which are subject to wear: Track Bar Bushings, Track Bar Heim Joints, Limit Straps, Control Arm Bushings, Radius Arm Bushings, Shock Bushings, Sway Bar End Link Heim Joints, Shock Seals, Shock Bearings, and Corrosion on Shock Shafts or Bodies. These items will be warranted for a period of 60 days from the date of purchase only if determined to be installed properly signifying manufacturing defect. Carli Suspension cannot warrant a product's cosmetic finish due to the varying extreme elements that may be encountered.

Any alterations, modifications, or improper installation, of the product will void this warranty. Products should be inspected for defect upon receipt and approved before installation. Any defect in NEW product will be warranted if returned before installation in its original packaging. Carli Suspension's obligation under this warranty is limited to the repair or replacement of the defective product only. All costs of removal, installation or reinstallation, freight charges, incidental or consequential damage are expressly excluded from this warranty.

Carli Suspension is not responsible for damages and/or warranty of other vehicle parts related or non-related to the installed Carli Suspension product. This warranty shall not apply to any product that has been subjected to accident, negligence, alteration, abuse or misuse as determined by Carli Suspension. Carli Suspension reserves the right to refuse warranty claims if produced parts are combined and/or substituted with other aftermarket suspension products. Combination and/or substitution of other aftermarket suspension components may cause premature wear and/or product failure. Carli Suspension reserves the right to change/alter product without obligation to update any previously purchased products.

---

### Parts Checklist

---

- (Qty. 2) - Bump Stop Drops
  - (Qty. 4) - 3/8" Bolts
  - (Qty. 4) - 3/8" Washers
  - (Qty. 2) - Captured Nut Bracket

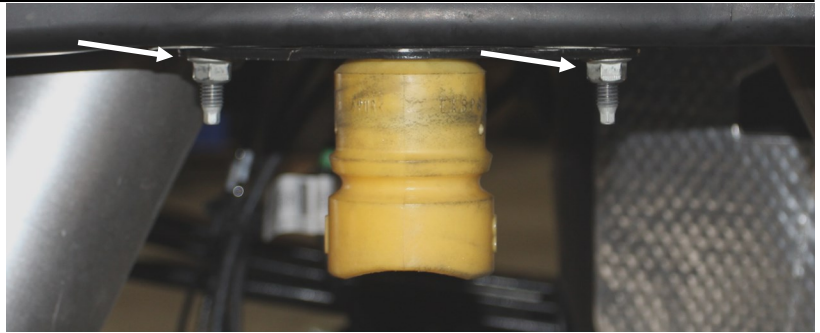


## CS-FBDR-17 : Ford Rear Bump Drop

Fitment  
2017+ F250/350 4x4  
Add-a-Pack and Full Spring Pack

### Instructions

1. Remove the 2 nuts retaining the factory bump stop using a 15mm socket and remove the assembly from the truck.



3. Remove the bump stop from the factory plate and retain the nut.

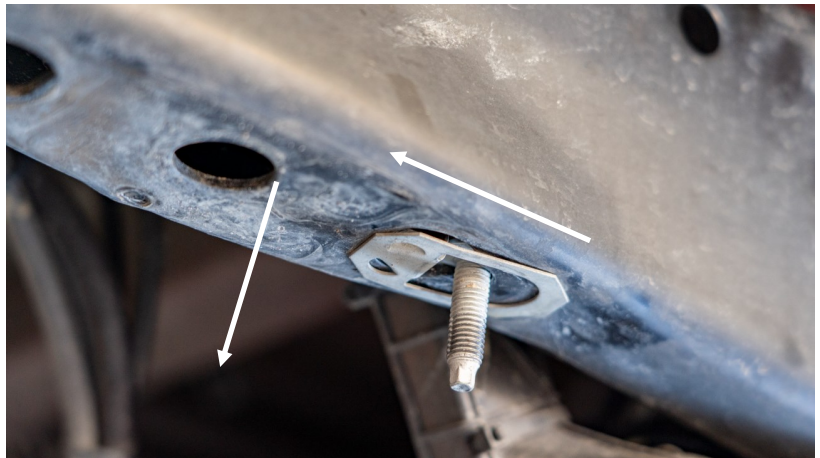


4. Assemble the bump stop to the Carli drop ensuring the index is placed into the guide hole in the Carli Bracket. This will index the bump stop to the proper orientation so the concave of the bump hits the round part of the axle.

5. Use a 15mm socket with an extension to secure the bump stop to the bracket ensuring the index remains seated in the hole in the Carli drop.



5. Remove the factory studs from the holes in the frame rail. Pull down and inward (toward the center hole) to remove them.



6. Install the captured-nut bracket in the frame. The threads face up and doublers that fit the cutout face down and index the bracket into the openings.

7. Hand thread the provided 3/8" Bolts and Washers to secure the bump stop to the capture nut bracket. We recommend starting both bolts and holding downward pressure on the bump stop as you tighten to keep the nut-bracket in the frame from shifting. Using a 9/16" - torque these bolts to 26lb.ft.

**NOTE: As pictured below, the Full Spring Bump Drops will Center the Bump, the Add-a-Pack Bumps will shift the bump to the Rear of the truck!**

