

CS-FCOMKIT-05 – 2005-07 Ford Upper & Lower Coilover Mounts

NOTE:

Please review the product instructions prior to attempting installation to ensure installer is equipped with all tools and capabilities necessary to complete the product installation. We recommend thoroughly reading the instructions at least twice prior to attempting Installation.

Before beginning disassembly of the vehicle, check the “Parts Checklist” section of the instructions to ensure you’ve received all parts necessary to complete installation. Further, verify that the parts received are PROPER TO YOUR application (year range, motor, etc.) to avoid potential down-time in correcting potential discrepancies. Any discrepancies will be handled by Carli Suspension and the correcting products will be shipped UPS Ground.

LIFETIME PRODUCT WARRANTY

Carli Suspension provides a limited lifetime product warranty against defects in workmanship and materials from date of purchase to the original purchaser for all products produced by Carli Suspension. Parts not manufactured by, but made to Carli Suspension’s specifications by third party manufacturers will carry a warranty through their respective manufacturer. (i.e. King Shocks, Bilstein Shocks, Fox Shocks). Deaver Leaf Spring’s warranty will be processed by Carli Suspension.

Proof of purchase (from the original purchaser only) will be required to process any warranty claims. Carli Suspension products must be purchased for the listed Retail Price reflected by the price listed on the Carli Suspension Website at the time of purchase. Carli Suspension reserves the right to refuse warranty claims made by any customer refusing or unable to present proof of purchase, or presenting proof of purchase reflecting a price lower than Carli Suspension’s Retail Price at the time the item was purchased.

Carli Suspension’s Limited Lifetime Warranty excludes the following parts which are subject to wear: Track Bar Bushings, Track Bar Heim Joints, Limit Straps, Control Arm Bushings, Radius Arm Bushings, Shock Bushings, Sway Bar End Link Heim Joints, Shock Seals, Shock Bearings, and Corrosion on Shock Shafts or Bodies. These items will be warranted for a period of 60 days from the date of purchase only if determined to be installed properly signifying manufacturing defect. Carli Suspension cannot warrant a product’s cosmetic finish due to the varying extreme elements that may be encountered.

Any alterations, modifications, or improper installation, of the product will void this warranty. Products should be inspected for defect upon receipt and approved before installation. Any defect in NEW product will be warranted if returned before installation in its original packaging. Carli Suspension’s obligation under this warranty is limited to the repair or replacement of the defective product only. All costs of removal, installation or reinstallation, freight charges, incidental or consequential damage are expressly excluded from this warranty.

Carli Suspension is not responsible for damages and/or warranty of other vehicle parts related or non-related to the installed Carli Suspension product. This warranty shall not apply to any product that has been subjected to accident, negligence, alteration, abuse or misuse as determined by Carli Suspension. Carli Suspension reserves the right to refuse warranty claims if produced parts are combined and/or substituted with other aftermarket suspension products. Combination and/or substitution of other aftermarket suspension components may cause premature wear and/or product failure. Carli Suspension reserves the right to change/alter product without obligation to update any previously purchased products.



Parts Checklist: 2005-2007

- **(2) Fabricated Upper Coilover Mounts**
- **Upper Mount Hardware Kit**
 - (14) ½" x 1.25" Bolts
 - (14) ½" C-Lock Nuts
 - (28) ½" Washers
 - (2) 5/8" x 9.5" – Heat Treated Bolts
 - (4) 5/8" Washers
 - (2) 5/8" C-Lock Nuts
 - (2) Frame-spacers (2008+, not utilized)
- **(2) Fabricated Lower Shock Mounts**
- **Lower Mount Hardware (preassembled on mount)**
 - (2) 1/2" x 3"
 - (4) ½" Washers
 - (2) ½" C-Lock Nuts
 - (6) ¼" x 1" Bolts
 - (12) ¼" Washers
 - (6) ¼" Nyloc Nuts
 - (2) M14 x 35mm Bolts
 - (2) M14 Washers

Parts Checklist: 2008-2016

- **(2) Fabricated Upper Coilover Mounts**
- **Upper Kit**
 - (12) ½" x 1.25" Bolts
 - (2) ½" x 1.5" Bolts
 - (14) ½" C-Lock Nuts
 - (28) ½" Washers
 - (2) 5/16" x 1.25" Bolt
 - (4) 5/16" Washers
 - (2) 5/16" C-Lock Nut
 - (2) 5/8" x 9.5" – Heat Treated Bolts
 - (4) 5/8" Washers
 - (2) 5/8" C-Lock Nuts
 - (2) Frame-spacers
- **(2) Fabricated Lower Shock Mounts**
- **Lower Mount Hardware (preassembled on mount)**
 - (2) 1/2" x 3"
 - (4) ½" Washers
 - (2) ½" C-Lock Nuts
 - (6) ¼" x 1" Bolts
 - (12) ¼" Washers
 - (6) ¼" Nyloc Nuts
 - (2) M14 x 35mm Bolts
 - (2) M14 Washers

Instructions

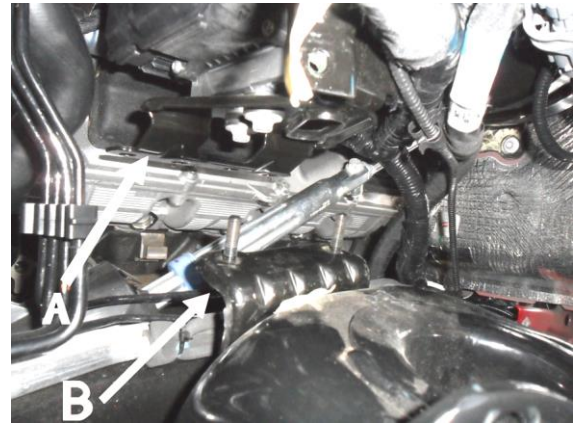
NOTE: This instruction is intended to be a continuation of a modular, full kit installation; if you're just installing the coilover brackets, there may be additional steps involved not mentioned in this document.

1. Fully extend front suspension and remove factory coils
2. Remove Fender Liners
3. Remove factory front bump stops from the cups that hold them. They're press in and only require a bit of manipulation to remove. These will be reused.
4. Remove Bump stop cup from the frame mount and set aside; this will be reused later.
5. Remove track bar bracket. Do not discard this will be used later.



6. Remove bolt on backside of driver's side coil bucket that holds wiring loom bracket.

7. Remove factory spring/shock bucket by removing 7 rivets that retain it to the frame. We use a grinder to "X" the rivet heads and an air-chisel to remove the heads. A punch will push the rivets through the frame; some are more difficult than others and will require drilling as well.
8. **2011-16 Vehicles require the ABS pump to be unbolted and re-attached to the new Coil Over Mount with the supplied ABS Bracket.** You will re-use the stock ABS Coil bucket bracket (Arrow "B") and bolt it onto the Carli Upper Coil Over Mount. Un-clip the Brake Lines that run behind the coil bucket before removing OEM Coil Bucket. Remove the 3 bolts and the rubber grommets on the ABS Bracket (Arrow "A"). Re-Install rubber grommets into the supplied Carli ABS Bracket into the same holes as the original bracket. Attach bracket onto ABS pump with the 3 bolts. This bracket will then install onto the OEM Bracket that you attached to the Carli Coil Over Mount.



9. Drill out ALL 7 factory rivet holes to 1/2"
10. Remove factory lower spring mount and discard.
11. Install new lower coilover mount with supplied M14, 1/2" and 1/4" hardware.
 - a. Torque Spec:
 - i. M14,2.0 x 35mm: 100ft.lbs
 - ii. 1/2" Lower Coilover Bolts: 85ft.lbs.
 - iii. 1/4" Mounting Hardware: 9 ft.lbs.
12. Install coilover in upper coilover mount with supplied 5/8" hardware; Torque to 130 ft/lbs.

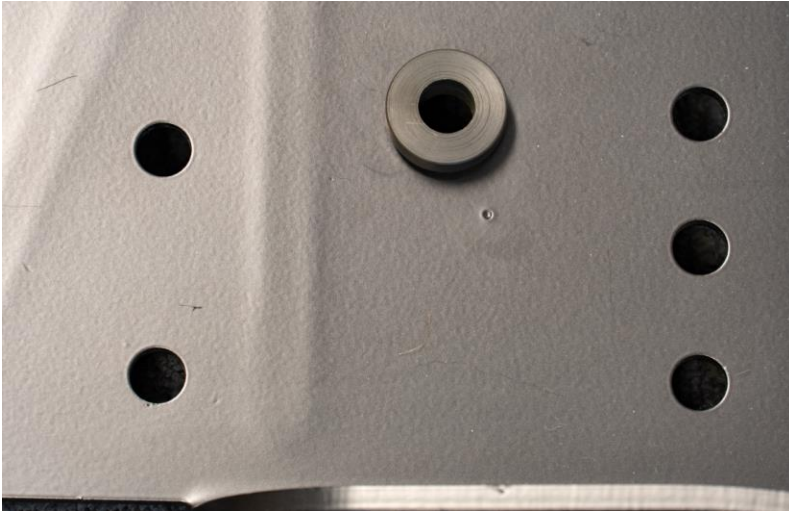
NOTE 1: This bolt may require a bit of a manipulation to go in as it's heat treated and may be slightly warped.

NOTE 2: Order of hardware front-back should be Bolt Head, washer, bracket, mis-alignment spacer, coilover, misalignment spacer, bracket, washer, nut.

NOTE 3: This step is how we install it in the shop as the long, upper 5/8" coilover bolt is VERY difficult to install with the mount installed to the frame rail.
13. Secure Coilover Mount to the Frame Rail as follows:
 - a. **2005-2007:** Lean the coilover away from the mount and place the bracket against the frame and assemble the (Qty: 14) - 1/2" x 1.25" Bolts and hardware hand tight. The Spacer is NOT used as the center mounting hole in the bucket is for the 2008-16 trucks.
 - b. **2011-2016:** Vehicles will require the ABS pump to be bolted onto the Coil Over Mount at this time. Lean the coilover away from the mount and place the bracket against the frame and assemble the (Qty: 12) - 1/2" x 1.25" Bolts and hardware hand tight. The (Qty. 2) - 1/2" x 1.5" longer bolts are for the centermost hole in the Coilover Bracket.
 - c. **Also, all 2008-16 will require the provided spacer to be installed into the center hole of the coilover bracket.** There's a corresponding "divot" in the frame rail this spacer bridges.



View from the BACK of the coilover Plate and, to the right, of the spacer itself. Tap in in with a dead-blow until flush.



14. Begin torquing the $\frac{1}{2}$ " mounting hardware to 85 ft/lbs starting with the bottom two bolts to ensure the base of the bracket is secure to the bottom of the frame.

NOTE: Be sure to attach the Brake Lines back into their clips behind Mount.

15. **2005-2007:** IGNORE, move to next step.

2011-2016: Mount previously disconnected wiring loom bracket to new upper coilover mount with the provided $\frac{5}{16}$ " hardware, torque spec 18 ft.lbs.

16. Remount factory track bar bracket using factory hardware and torque to 65 lbs/ft.

17. Assemble Coilovers to lower mount using supplied $\frac{1}{2}$ " bolts. Torque to 85 ft/lbs.

NOTE: We provide 2 Misalignment spacers per coilover that reduce the $\frac{5}{8}$ " bearing to the $\frac{1}{2}$ " bolt and spacer the shock mount, ensure these are installed!

18. Mount coilover reservoir to the side of the front section of the frame using reservoir mounts and self tapping screws (supplied with your suspension system) as shown in image below.

NOTE: If system is equipped with Bypass Shocks, mount them at this time using provided hardware on top and the factory bolt on the bottom mount. Torque to 85ft.lbs.

19. Install factory fender liners using factory hardware and trim accordingly.

20. Proceed to next part of the Kit Instruction.



Shown with optional Bypass Shock and Gold Coilover Plates for presentation