

ROUGH COUNTRY

SUSPENSION SYSTEMS®

921604310

JEEP 2014-23 KL Cherokee Lift Kit

Thank you for choosing Rough Country for all your vehicle needs.

Please read instructions before beginning installation. Check the kit hardware against the kit contents shown below. Be sure you have all needed parts and know where they go.

If questions exist, please call us @1-800-222-7023. We will be happy to answer any questions concerning this product. Check all fasteners for proper torque. Check to ensure for adequate clearance between all components. Periodically check all hardware for tightness.

KIT CONTENTS:
 Front Struts x2
 Rear Coil Springs x2
 Rear Shocks x2

TOOLS NEEDED:
 10mm socket
 15mm socket
 16mm socket
 18mm socket
 18mm wrench
 21mm socket
 36mm socket
 19mm socket
 E14 Torx Socket
 E20 Torx Socket

HARDWARE INCLUDED:
 Strut Clamps x2



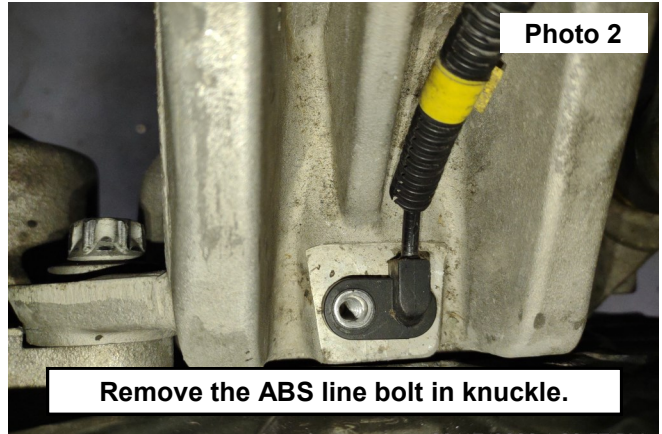
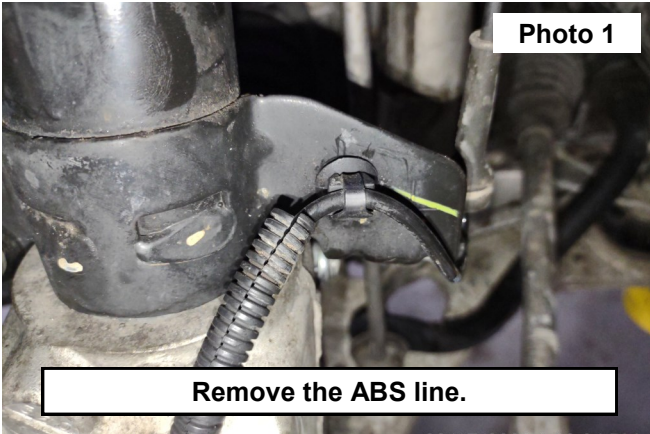
Torque Specs:

Size	Grade 5	Grade 8	Size	Class 8.8	Class 10.9
5/16"	15 ft/lbs	20ft/lbs	6MM	5ft/lbs	9ft/lbs
3/8"	30 ft/lbs	35ft/lbs	8MM	18ft/lbs	23ft/lbs
7/16"	45 ft/lbs	60ft/lbs	10MM	32ft/lbs	45ft/lbs
1/2"	65 ft/lbs	90ft/lbs	12MM	55ft/lbs	75ft/lbs
9/16"	95 ft/lbs	130ft/lbs	14MM	85ft/lbs	120ft/lbs
5/8"	135ft/lbs	175ft/lbs	16MM	130ft/lbs	165ft/lbs
3/4"	185ft/lbs	280ft/lbs	18MM	170ft/lbs	240ft/lbs

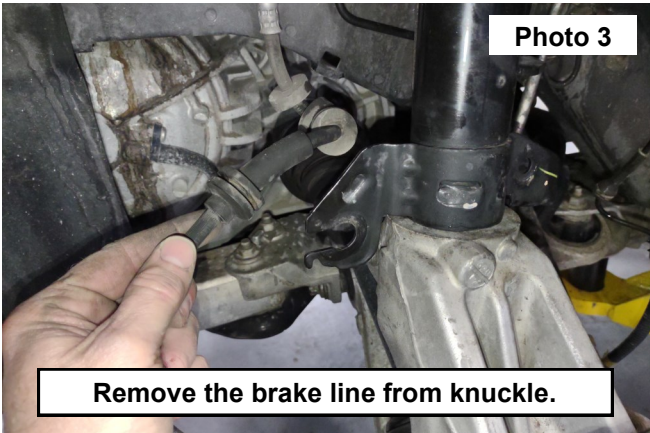


INSTALLATION INSTRUCTONS

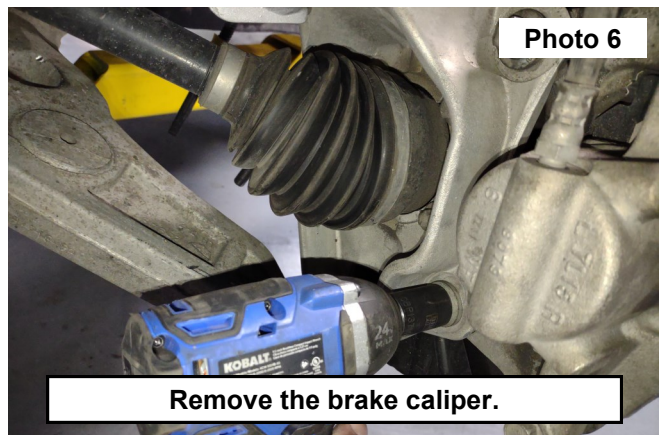
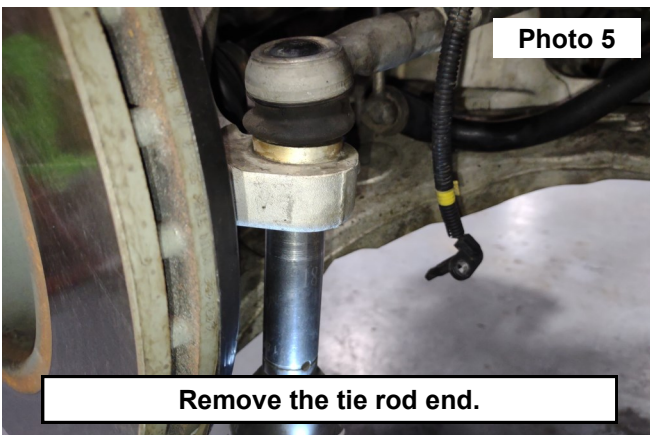
1. Lift the front of the vehicle and place onto jack stands. Remove the wheels and tires using a 19mm socket.
2. Remove the ABS line clip from the lower strut mount. **See Photo 1.**
3. Remove the ABS line from the lower knuckle using a 10mm socket. **See Photo 2.**



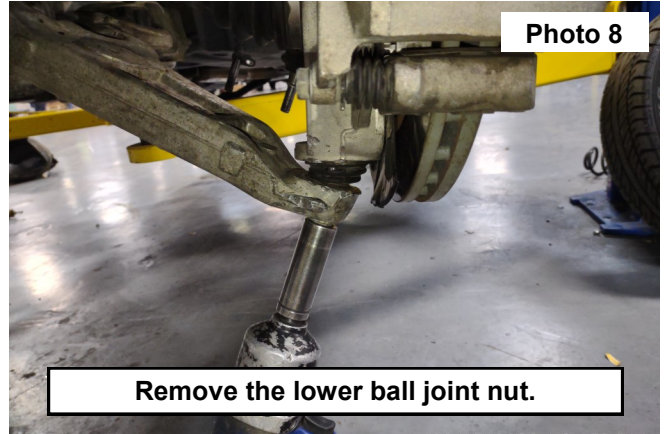
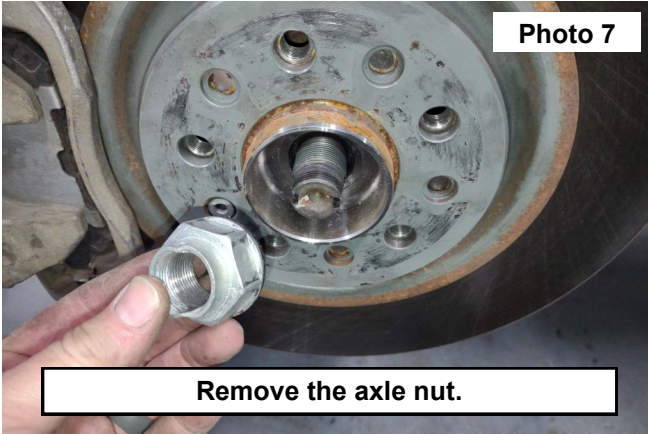
4. Remove the rubber gromet brake line from the lower strut mount. **See Photo 3.**
5. Remove the upper sway link nut from the strut mount using a 15mm socket. **See Photo 4.**



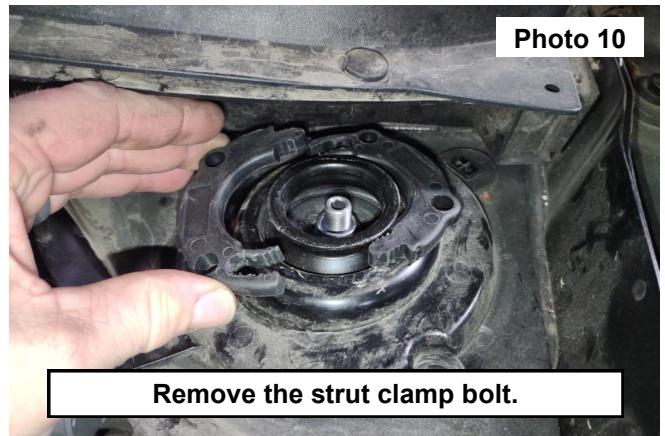
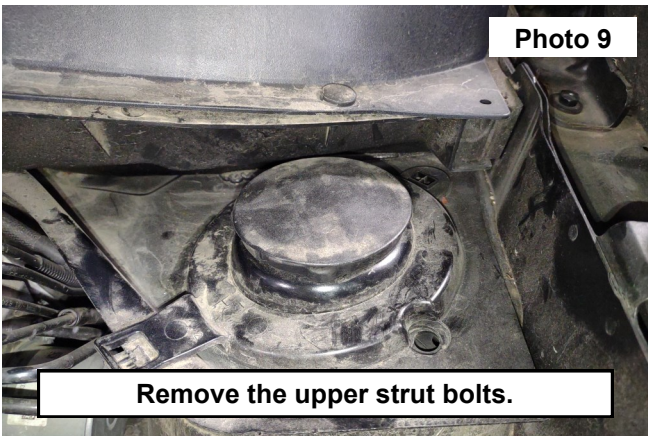
6. Loosen the nut from the tie rod end using a 21mm socket. Then unseat the taper by striking the knuckle boss, remove the nut, and remove the ball joint. **See Photo 5.**
7. Remove the (2) brake caliper bolts using and E20 Torx socket. Remove the brake caliper from the lower knuckle and hang it in a safe location. Do not extend the brake line. **See Photo 6.**



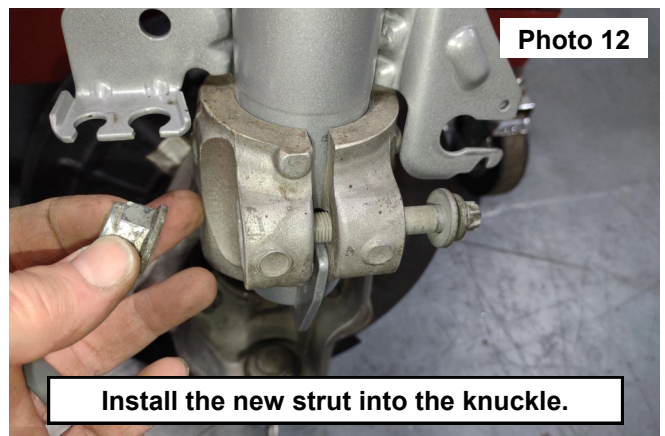
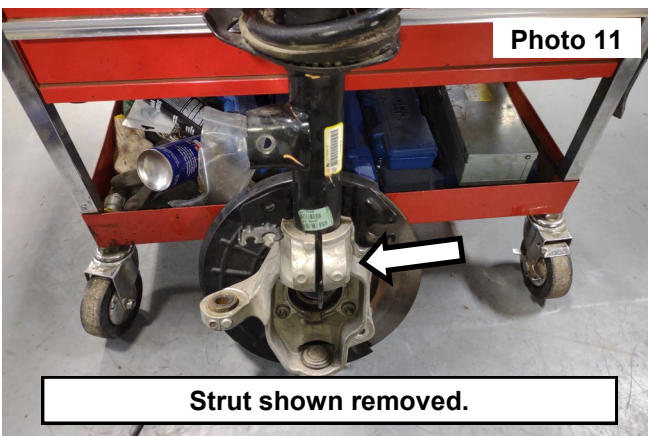
8. Remove the axle nut using a 36mm socket. **See Photo 7.**
9. Loosen the lower ball joint using an 18mm socket. Unseat the taper by striking the lower control arm boss, remove the, nut and remove the knuckle from the lower arm. **See Photo 8.**



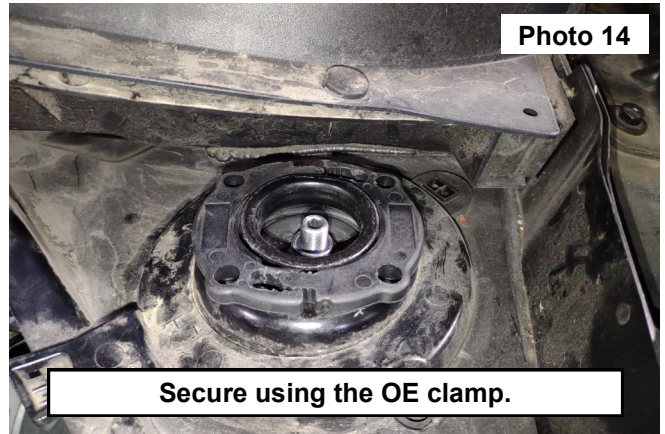
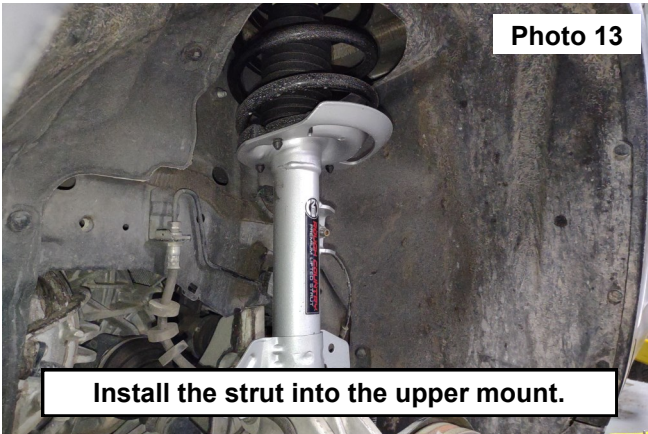
10. Remove the upper strut dust cap from the clamp. **See Photo 9.**
11. Separate the upper strut clamp to remove the strut from the vehicle. **See Photo 10.**



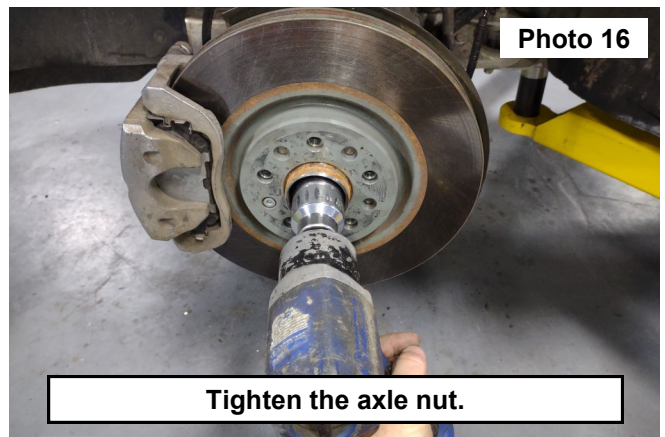
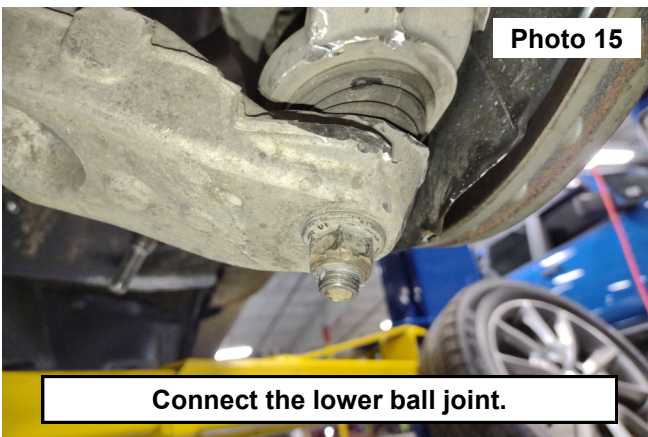
12. Remove the strut knuckle clamp bolt using a 18mm wrench and E14 Torx socket. Remove the strut from the knuckle. **See Photo 10.**
13. Install the new strut into the knuckle and secure using the OE bolt and nut. Tighten using 18mm socket on the nut and a E14 Torx socket on the bolt. **See Photo 12.**



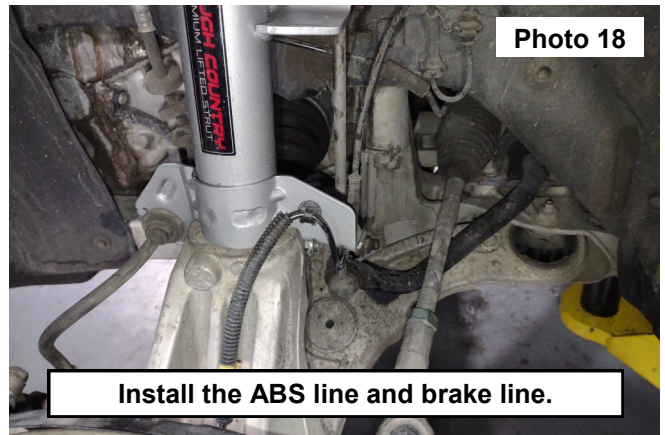
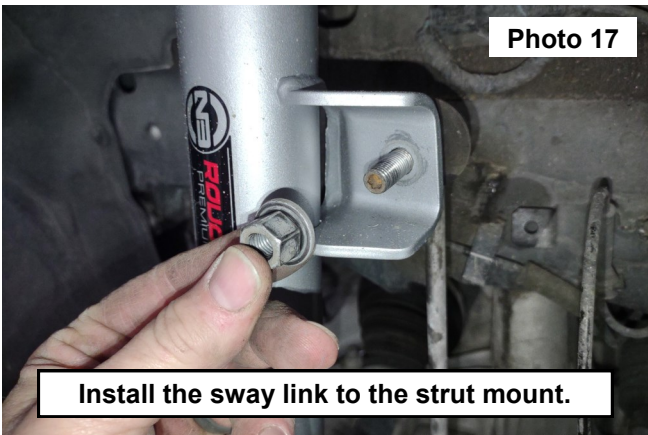
14. Install the strut and knuckle into the vehicle. Secure the strut into the upper mount using the supplied clamp and OE dust cover. **See Photos 13 and 14.**



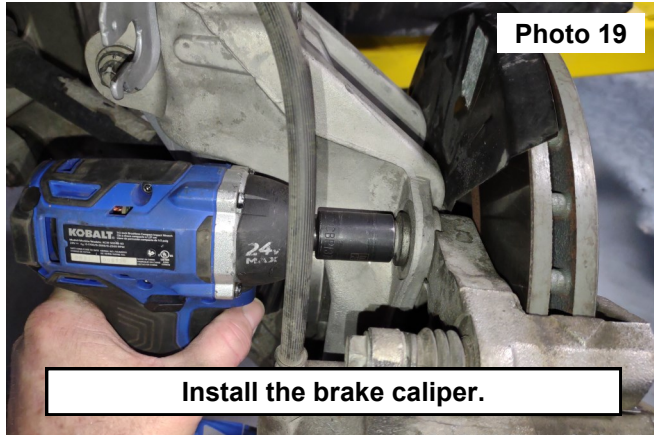
15. Connect the lower ball joint to the lower control arm and secure using an 18mm socket. **See Photo 15.**
16. Install the axle nut using a 36mm socket. **See Photo 16.**



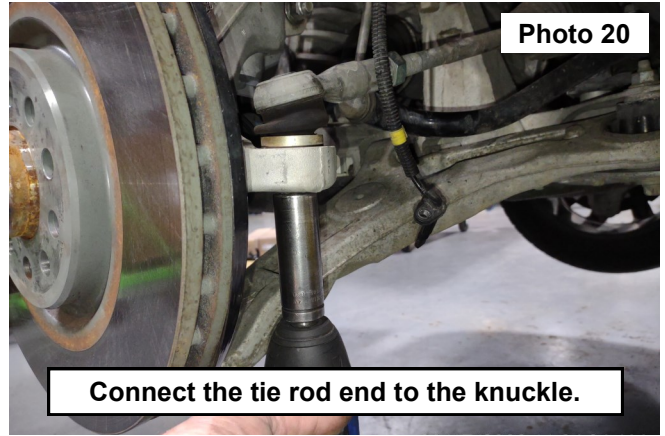
17. Install the sway link to the strut mount. Tighten the nut using a 15mm socket. **See Photo 17.**
18. Install the brake line and ABS line clips into the strut mount, install the ABS sensor into the knuckle. Tighten using a 10mm socket. **See Photo 18.**



19. Install the brake caliper onto the knuckle using (2) of the OE bolts. Tighten the caliper bolts using a E20 Torx socket. **See Photo 19.**



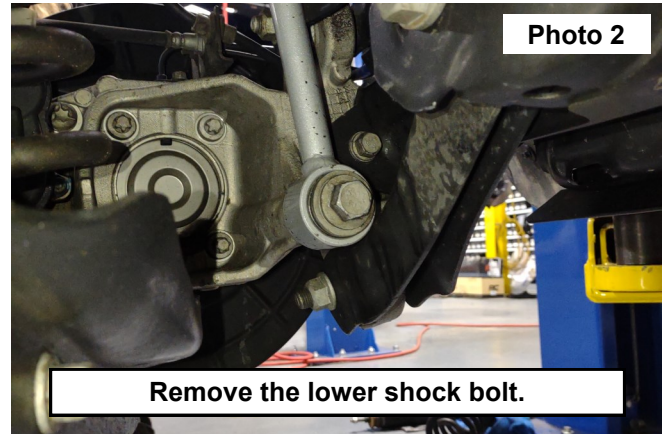
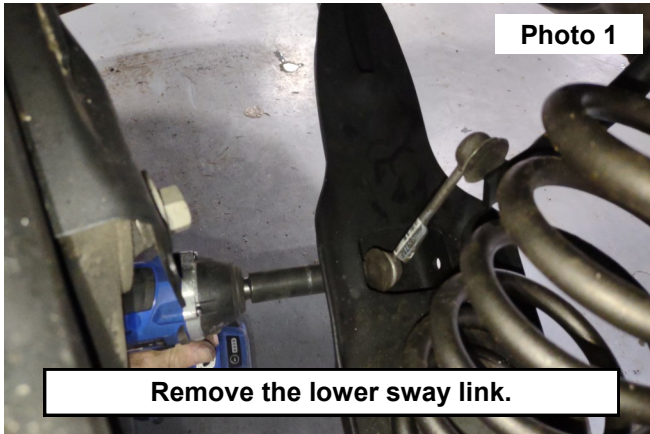
Install the brake caliper.



Connect the tie rod end to the knuckle.

21. Repeat steps 1-20 on the opposite side of the vehicle.
22. Install wheels and tires, remove the vehicle from the jack stands and lower the front onto the ground.

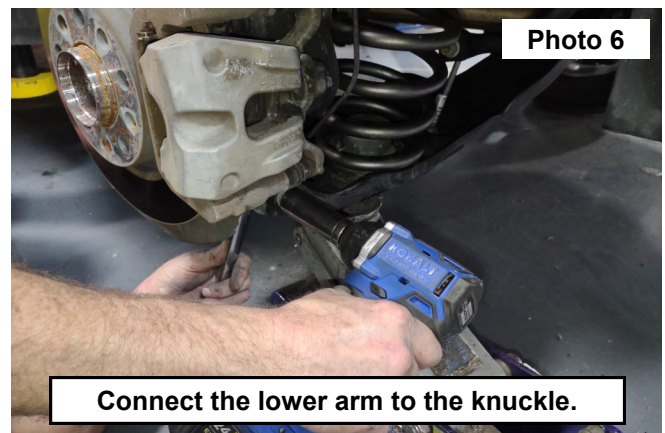
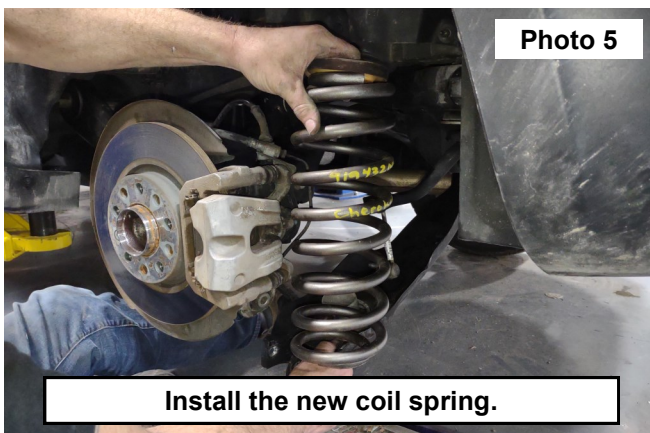
1. Lift the rear of the vehicle up and place on jack stands. Remove the wheels and tires.
2. Remove the lower sway link from the control arm using an 15mm socket. **See Photo 1.**
3. Remove the lower shock bolt using an 21mm socket. **See Photo 2.**



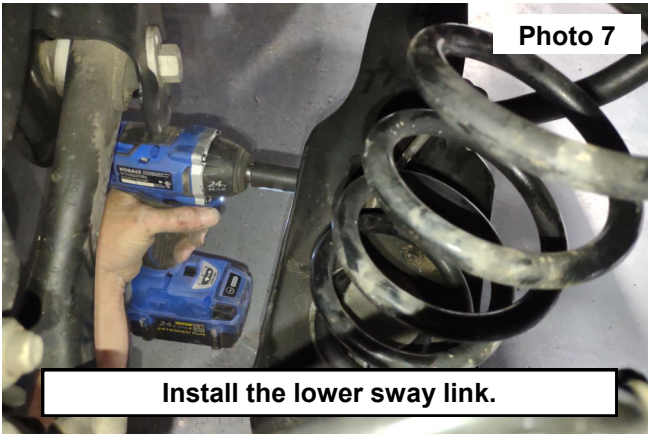
4. Lift the lower control arm up using a jack. Remove the outer knuckle bolt using an 18mm socket and wrench. **See Photo 3.**
5. Lower the jack and remove the rear coil spring. Retain the upper spring seat. **See Photo 4.**



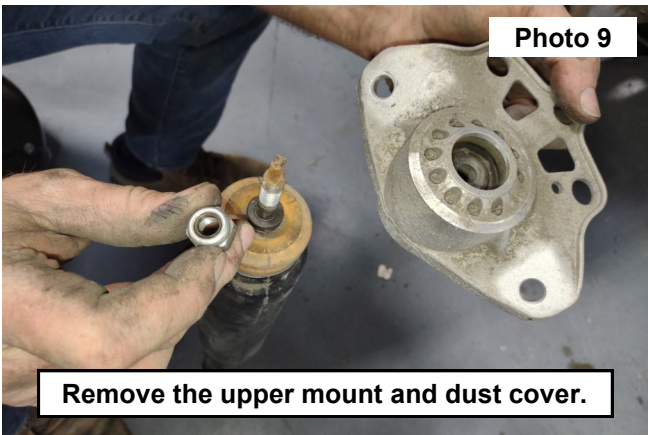
6. Install the new rear coil spring using the OE upper spring seat. Lift the control arm up and secure the outer knuckle bolt and tighten using an 18 wrench and 19mm socket. **See Photos 5 and 6.**
7. Lower and remove the jack.



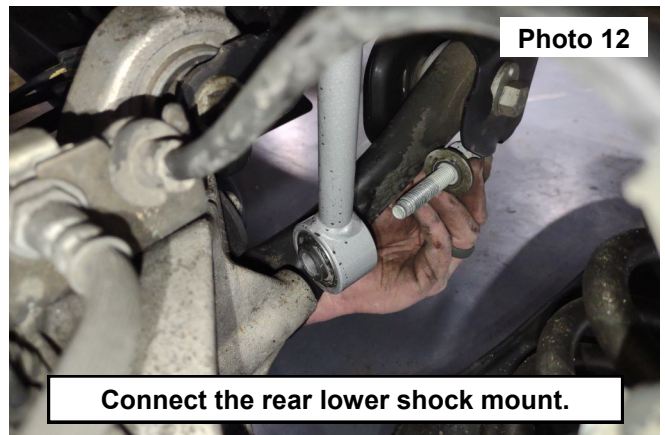
8. Install the sway link to the lower control arm. Tighten using a 18mm socket. **See Photo 7.**
9. Remove the rear upper (2) bolts in the shock mount using an 16mm socket. **See Photo 8.**



10. Remove the upper stem nut using an 17mm socket and remove the shock mount and the dust cover. **See Photo 9.**
11. Install the dust cover and the upper shock mount onto the new shock. Secure using the supplied nut. Tighten using a 17mm socket. **See Photos 10.**



12. Install the shock into the upper mount and secure using the (2) OE bolts tighten using a 16mm socket. **See Photo 11.**
13. Lift the lower control arm and connect the lower shock mount using the OE bolt. Tighten using a 18mm socket. **See Photo 12.**
14. Repeat steps 1-12 on the opposite side of the vehicle.
15. Install the wheels and tires and remove the vehicle from the jack stands.



By purchasing any item sold by Rough Country, LLC, the buyer expressly warrants that he/she is in compliance with all applicable, State, and Local laws and regulations regarding the purchase, ownership, and use of the item. It shall be the buyers responsibility to comply with all Federal, State and Local laws governing the sales of any items listed, illustrated or sold. The buyer expressly agrees to indemnify and hold harmless Rough Country, LLC for all claims resulting directly or indirectly from the purchase, ownership, or use of the items.

