

CS-FLTB-EX-99 – Ford Long Travel Airbags, 1999-06 Excursion

NOTE:

Please review the product instructions prior to attempting installation to ensure installer is equipped with all tools and capabilities necessary to complete the product installation. We recommend thoroughly reading the instructions at least twice prior to attempting Installation.

Before beginning disassembly of the vehicle, check the “What’s Included” section of the instructions to ensure you’ve received all parts necessary to complete installation. Further, verify that the parts received are PROPER TO YOUR application (year range, motor, etc.) to avoid potential down-time in correcting potential discrepancies. Any discrepancies will be handled by Carli Suspension and the correcting products will be shipped UPS Ground.

LIFETIME PRODUCT WARRANTY

Carli Suspension provides a limited lifetime product warranty against defects in workmanship and materials from date of purchase to the original purchaser for all products produced by Carli Suspension. Parts not manufactured by, but made to Carli Suspension’s specifications by third party manufacturers will carry a warranty through their respective manufacturer. (i.e. King Shocks, Bilstein Shocks, Fox Shocks). Deaver Leaf Spring’s warranty will be processed by Carli Suspension.

Proof of purchase (from the original purchaser only) will be required to process any warranty claims. Carli Suspension products must be purchased for the listed Retail Price reflected by the price listed on the Carli Suspension Website at the time of purchase. Carli Suspension reserves the right to refuse warranty claims made by any customer refusing or unable to present proof of purchase, or presenting proof of purchase reflecting a price lower than Carli Suspension’s Retail Price at the time the item was purchased.

Carli Suspension’s Limited Lifetime Warranty excludes the following parts which are subject to wear: Track Bar Bushings, Track Bar Heim Joints, Limit Straps, Control Arm Bushings, Radius Arm Bushings, Shock Bushings, Sway Bar End Link Heim Joints, Shock Seals, Shock Bearings, and Corrosion on Shock Shafts or Bodies. These items will be warranted for a period of 60 days from the date of purchase only if determined to be installed properly signifying manufacturing defect. Carli Suspension cannot warrant a product’s cosmetic finish due to the varying extreme elements that may be encountered.

Any alterations, modifications, or improper installation, of the product will void this warranty. Products should be inspected for defect upon receipt and approved before installation. Any defect in NEW product will be warranted if returned before installation in its original packaging. Carli Suspension’s obligation under this warranty is limited to the repair or replacement of the defective product only. All costs of removal, installation or reinstallation, freight charges, incidental or consequential damage are expressly excluded from this warranty.

Carli Suspension is not responsible for damages and/or warranty of other vehicle parts related or non-related to the installed Carli Suspension product. This warranty shall not apply to any product that has been subjected to accident, negligence, alteration, abuse or misuse as determined by Carli Suspension. Carli Suspension reserves the right to refuse warranty claims if produced parts are combined and/or substituted with other aftermarket suspension products. Combination and/or substitution of other aftermarket suspension components may cause premature wear and/or product failure. Carli Suspension reserves the right to change/alter product without obligation to update any previously purchased products.

Special Notes:

- THIS AIR BAG SYSTEM WAS DESIGNED AROUND A STOCK EXHAUST CONFIGURATION. SOME AFTERMARKET EXHAUST SYSTEMS WILL REQUIRE MODIFICATIONS TO THE TAIL PIPE!
- Installation will be done with rear axle at full droop (extended).
- The lower airbag brackets are part of the 4.5" System (Upper U-Bolt Plate and Bump stop Strike Plate). They are NOT included in this kit and will be reused from the suspension system.
- AIR PRESSURE, **EMPTY:** 5psi **Loaded:** Bags can be filled to a MAXIMUM of 100psi. Adjust the pressure according to the load.

Package Contents:

- (2) Upper Air Bag Brackets
- (2) Airbags
- (2) 90° Air Fittings, (2) Schrader Valves
- (9 Ft.) of Airline

Airbag Bracket Hardware:

- (6) 1/2" x 1" Bolts
- (12) 1/2" Flat Washers
- (6) 1/2" C-Lock Nuts

Airbag Securing Hardware:

- (4) 3/8" x 1" Bolts
- (4) 3/8" Lock Washers
- (4) 3/8" Flat Washers

This airbag system is designed to work with the Carli 4.5" lift for the Excursion. WE DO NOT GUARANTEE FITMET NOR OFFER WARRANTY to any application other than those equipped with the 4.5" Carli Suspension System. The following components are NOT included in the airbag kit as they were provided with the Suspension System and will be re-utilized:

Included with Rear Leaf Springs:

- (2) Fabricated U-Bolt Upper Plates
- (2) Bump Stop Strike Plate/Lower Airbag Bracket
- (4) 3/8" x 6.5" Bolts
- (8) 3/8" Flat Washers
- (4) 3/8" Lock Nuts

Included With Rear Bump Stop Drops:

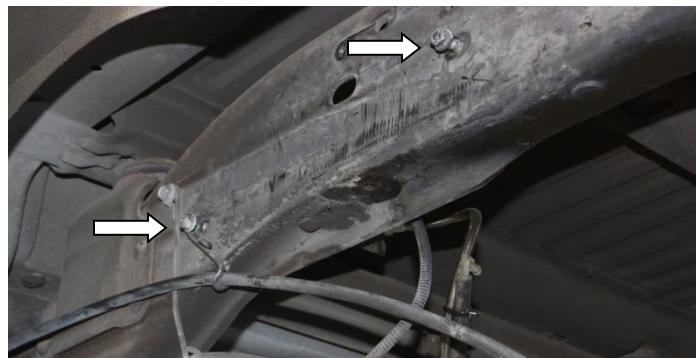
- (2) 3/8" x 1" Bolts
- (4) 3/8" Flat Washers
- (2) 3/8" Lock Washers
- (2) 5/8" x 1.25" Bolt
- (2) 5/8" Flat Washer
- (2) 3/16" thick, 5/8" Fender Washer

Installation Instructions:

1. Block front wheels so vehicle will not roll while doing the install.
2. Jack up rear of the vehicle and place jack stands under both frame rails.
3. Let axle fully extend, remove rear wheels if needed.
4. Remove the rear Carli Bump Stop Drops and O.E yellow bumpstops, you will no longer need these while the long travel air bags are installed. The E-Brake cable will be installed to the drop bracket if a Carli system was previously installed. Remove hardware securing the P-Clamp and let brake line hang. If Carli Drops are not installed, remove the bumps from the frame. You'll need to start with a bare frame rail.



5. Un-bolt the fuel line retaining hardware from the outside of the Driver's side, rear frame rail to allow manipulation of the fuel lines inside the frame rail during installation.



6. Fit the passenger side bracket up to the frame rail and use the provided 3/8" x 1" hardware to hold it in place to the bottom of the frame rail, hand tight.

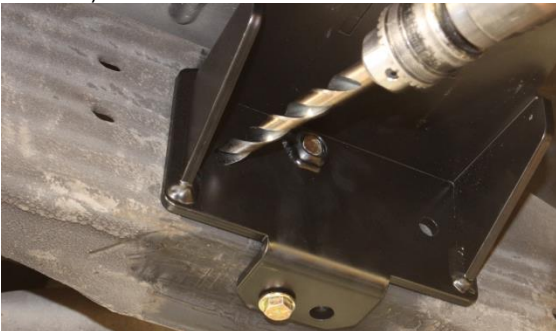


8. From the inside of the frame rail, insert the 5/8" x 1.25" bolt, Flat washer and Fender washer hand tight into the captured nut in the bracket.
9. The upper and lower brackets need to be in line with each other. The 5/8" hole is slotted and the 3/8" bolt is in a 1/2" hole to allow the bracket to slide forward or back to index the upper bracket to the lower. The airbag should be mocked up to ensure alignment before the holes are drilled in the following steps.
10. Once alignment is confirmed, torque 3/8" hardware to 40 lb/ft to hold the bracket flush to the frame, then torque 5/8" bolt to 212lb/ft.
11. These two bolts index the bracket to the frame.

7.



12. The remaining holes in the bracket will need to be drilled to accept the provided 1/2" hardware. There are a total of (3) 1/2" holes to be drilled, (1) on the bottom & (1) on each side of the 5/8" hardware. Drill these and install the provided 1/2" x 1" Bolts, Washers, and C-Lock Nuts. Torque Hardware to 100lb/ft.



NOTE: When Drilling on the DRIVER'S side, there are fuel lines running the length of the frame rail. Remove the fastening hardware and move these lines out of the way if not already moved from installation of the 5/8" hardware.

13. Once The brackets are bolted to the frame rail, reattach the brake lines/E-brake cable using the factory hardware to the inside of the frame rail.
14. Install the 90* air fitting into the bag using Teflon tape or thread sealant It should face the rear and be parallel with the upper piston.

15. Assemble the bag to the upper bracket using provided 3/8" x 1" bolt, lock washer and flat washer.
16. The air fitting in should face the rear frame rail.



17. Remove the Bump Stop Strike plate from the U-Bolt top plate and assemble it to the bottom of the bag using the 3/8" x 1" Bolt, lock washer and flat washer and tighten.



18. Pull the bracket down to meet with the U-Bolt Plate and resecure the lower mount to the U-Bolt plate with the 3/8" Hardware. Torque to 40lb/ft. The slope should be to the rear.



19. Route the airlines to the rear of the truck and mount the air valves in your desired location; we mount them to the trailer hitch.
20. Fill the bags with 50psi and spray them with a soap/water solution and check for leaks.
21. Make sure nothing is rubbing the airbags, check torque on all bolts and retorque after 500 miles.