



CS-JATB-07-R - Adjustable Track Bar, Rear

Fitment
2007-17 Wrangler JKU, 4x4

Carli Suspension, Inc.
596 Crane St.
Lake Elsinore, CA 92530
888-992-2754

Note

Please review the product instructions prior to attempting installation to ensure installer is equipped with all tools and capabilities necessary to complete the product installation. We recommend thoroughly reading the instructions at least twice prior to attempting installation.

Before beginning disassembly of the vehicle, check the "What's Included" section of the instructions to ensure you've received all parts necessary to complete installation. Further, verify that the parts received are PROPER TO YOUR application (year range, motor, etc.) to avoid potential down-time in correcting potential discrepancies. Any discrepancies will be handled by Carli Suspension and the correcting products will be shipped UPS Ground.

Lifetime Product Warranty

Carli Suspension provides a limited lifetime product warranty against defects in workmanship and materials from date of purchase to the original purchaser for all products produced by Carli Suspension. Parts not manufactured by, but made to Carli Suspension's specifications by third party manufacturers will carry a warranty through their respective manufacturer. (i.e. King Shocks, Bilstein Shocks, Fox Shocks). Deaver Leaf Spring's warranty will be processed by Carli Suspension.

Proof of purchase (from the original purchaser only) will be required to process any warranty claims. Carli Suspension products must be purchased for the listed Retail Price reflected by the price listed on the Carli Suspension Website at the time of purchase. Carli Suspension reserves the right to refuse warranty claims made by any customer refusing or unable to present proof of purchase, or presenting proof of purchase reflecting a price lower than Carli Suspension's Retail Price at the time the item was purchased.

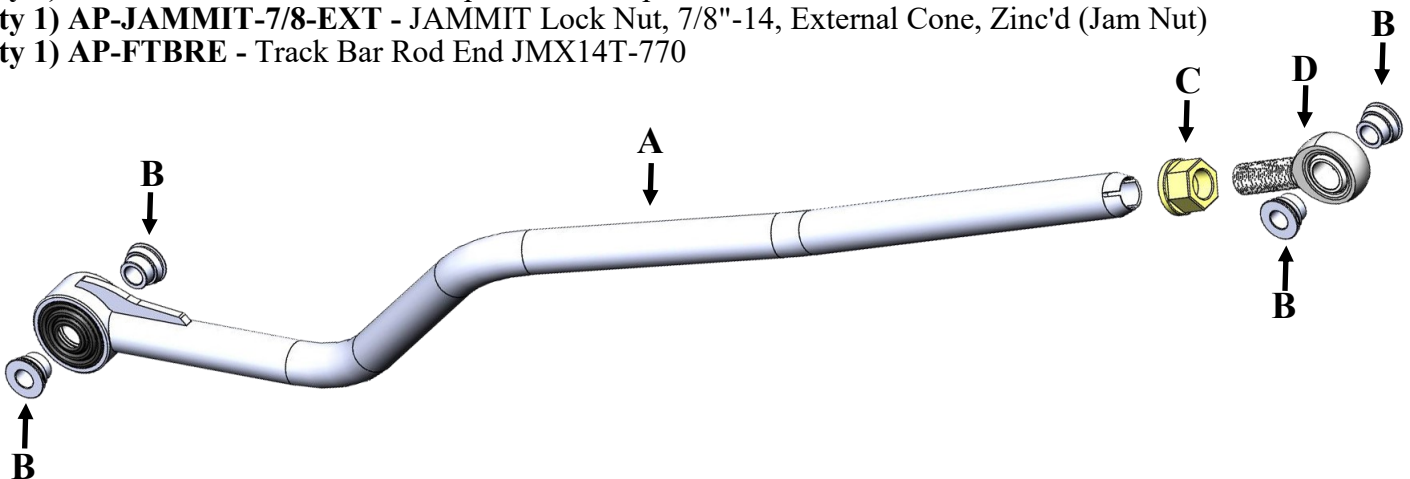
Carli Suspension's Limited Lifetime Warranty excludes the following parts which are subject to wear: Track Bar Bushings, Track Bar Heim Joints, Limit Straps, Control Arm Bushings, Radius Arm Bushings, Shock Bushings, Sway Bar End Link Heim Joints, Shock Seals, Shock Bearings, and Corrosion on Shock Shafts or Bodies. These items will be warranted for a period of 60 days from the date of purchase only if determined to be installed properly signifying manufacturing defect. Carli Suspension cannot warrant a product's cosmetic finish due to the varying extreme elements that may be encountered.

Any alterations, modifications, or improper installation, of the product will void this warranty. Products should be inspected for defect upon receipt and approved before installation. Any defect in NEW product will be warranted if returned before installation in its original packaging. Carli Suspension's obligation under this warranty is limited to the repair or replacement of the defective product only. All costs of removal, installation or reinstallation, freight charges, incidental or consequential damage are expressly excluded from this warranty.

Carli Suspension is not responsible for damages and/or warranty of other vehicle parts related or non-related to the installed Carli Suspension product. This warranty shall not apply to any product that has been subjected to accident, negligence, alteration, abuse or misuse as determined by Carli Suspension. Carli Suspension reserves the right to refuse warranty claims if produced parts are combined and/or substituted with other aftermarket suspension products. Combination and/or substitution of other aftermarket suspension components may cause premature wear and/or product failure. Carli Suspension reserves the right to change/alter product without obligation to update any previously purchased products.

Parts Checklist

- A. (Qty 1) CS-JATB-07-R - Adjustable Track Bar, Frame Bushing Installed
- B. (Qty 4) MP-JATBSPCR-14MM - Jeep Track Bar Spacer, 14MM
- C. (Qty 1) AP-JAMMIT-7/8-EXT - JAMMIT Lock Nut, 7/8"-14, External Cone, Zinc'd (Jam Nut)
- D. (Qty 1) AP-FTBRE - Track Bar Rod End JMX14T-770





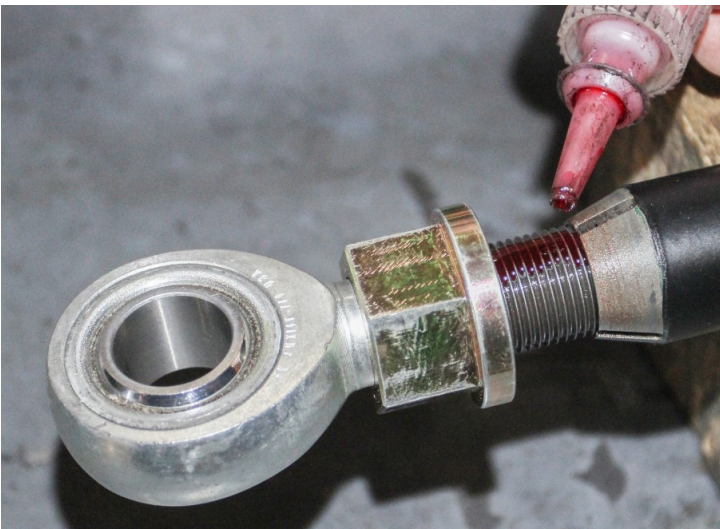
CS-JATB-07-R - Adjustable Track Bar, Rear

NOTE - This rear track bar is designed ONLY for use with the Carli track bar riser (PN: CS-JATB-07-R-RISER). It will not work in the factory bracket!!

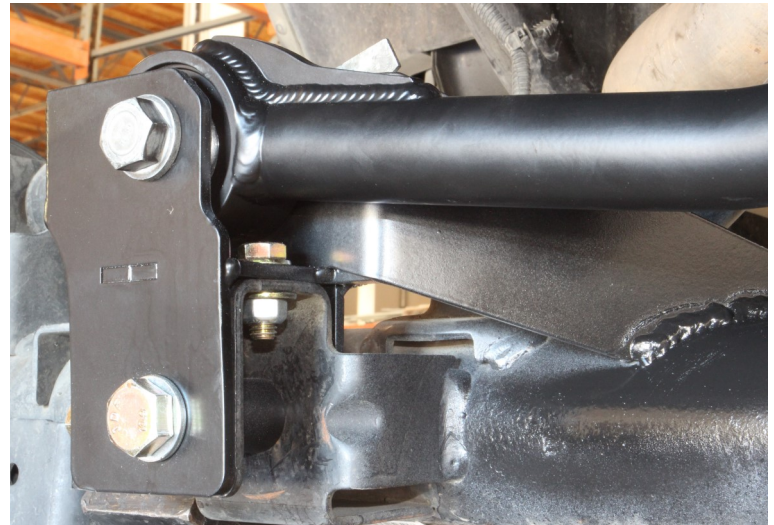
1. Inspect the Carli Track Bar to ensure all needed to install is present. The Frame and axle sides should be preassembled with 2 spacers zip-tied to the assembly. The frame end of the bar with should also have a jam nut pre installed.
2. Clip the zip ties and set the 4 misalignment spacers aside.
3. Place the axle of the track bar housing into a vice to hold it's position securely vertical and support the bar with a block of wood to give you the easiest working angle when tightening the jam-nut.



4. Thread the heim joint all the way out until only a couple threads hold it to the bar.
5. Thread the jam-nut all the way to the end of the heim joint shank to expose the threads.
6. Apply a generous amount of red (high strength) thread locker, we recommend loctite brand, to the exposed threads.



7. Spin the jam nut onto the exposed threads to ensure both the male threads on the heim joint shank and female jam nut threads are coated with the thread locker.
8. Thread the rod end into the bar until the center to center measurement (center of the heim joint to the center of the frame joint) measures 40-1/8". When this measurement is achieved, spin the heim joint until it's perfectly parallel to the frame end of the track bar housing.
9. Spin the jam nut to the end of the bar and torque using a crow's foot to 200lb.ft. **The joint will not yield until close to 500lb.ft. The more torque, the better. We use a 36" adjustable wrench to take this joint far beyond 200lb.ft.**
10. Once torqued, make sure the ends are parallel and did not move during the torquing process; if the heim moved, you can use a large adjustable wrench to roll it counter-clockwise until parallel ensuring the nut doesn't loosen with it.
11. With the bar set to length, insert 2 of the misalignment spacers into the axle-end joint (welded cup with strap) and slide it into the Carli track bar riser.



12. Insert the factory bolt and capture nut hand tight for now.
13. Insert the other misalignment spacers into the frame end heim joint assembly and slide into the factory bracket, again securing with the factory hardware. If the holes are off and installation is being done with the axle off the ground, a ratchet strap secured to the passenger side of the axle and driver's side frame rail can be used to pull the axle over and line up the bolt holes.



14. With the track bar installed, torque upper and lower mounting hardware to 125lb.ft.