

AIR LIFT
PERFORMANCE

Kit 78667

Lexus IS (XE30), GS (L10)

Rear Application



INSTALLATION GUIDE

For maximum effectiveness and safety, please read these instructions completely before proceeding with installation.

Failure to read these instructions can result in an incorrect installation.

Protect your Air Lift Performance Purchase by Completing your Warranty Registration




Thank you for purchasing an Air Lift Performance product!

Take a photo of your sales receipt and then scan the
QR code to complete your online warranty registration.



TABLE OF CONTENTS

A. Introduction	2
Notation Explanation	2
B. Important Safety Notices	2
C. Installation Diagram	3
Hardware List	3
D. Installing the Air Suspension	4
Removing the Stock Suspension	4
Installing the Air Suspension	5
Routing Air Lines	8
E. Finished Installation	9
F. Before Operating	10
Set the Ride Height	10
Torque Specifications	10
Suggested Driving Air Pressure and Maximum Air Pressure	10
Check for Binding	10
Installation Checklist	11
Damping Adjustment	11
Limited Warranty and Return Policy	12



A. Introduction

Air Lift Performance thanks you for purchasing the most complete, fully engineered high-performance air suspension made for the Lexus IS (XE30) and GS (L10). Read these installation instructions to correctly and safely set up the vehicle for a #lifeonair.

Air Lift assumes that the installer has the mechanical knowledge and ability to work on vehicle suspension systems and has basic tools necessary to complete a suspension replacement project. Special tools needed to complete the installation are noted on the Installation Diagram page.

Air Lift reserves the right to make changes and improvements to its products and publications at any time. For the latest version of this manual, contact Air Lift Performance at (800) 248-0892 or visit www.airliftperformance.com.

An Air Lift Performance air management system is highly recommended for this product. Learn more at air-lift.co/productlines.

NOTATION EXPLANATION

Hazard notations appear in various locations in this publication. Information which is highlighted by one of these notations must be observed to help minimize risk of personal injury or possible improper installation which may render the vehicle unsafe. Notes are used to help emphasize areas of procedural importance and provide helpful suggestions. The following definitions explain the use of these notations as they appear throughout this guide.

**DANGER**

INDICATES IMMEDIATE HAZARDS WHICH WILL RESULT IN SEVERE PERSONAL INJURY OR DEATH.

**WARNING**

INDICATES HAZARDS OR UNSAFE PRACTICES WHICH COULD RESULT IN SEVERE PERSONAL INJURY OR DEATH.

**CAUTION**

INDICATES HAZARDS OR UNSAFE PRACTICES WHICH COULD RESULT IN DAMAGE TO THE VEHICLE OR MINOR PERSONAL INJURY.

NOTE

Indicates a procedure, practice or hint which is important to highlight.

B. Important Safety Notices

**WARNING**

DO NOT INFLATE AIR SPRINGS WHILE OFF OF THE VEHICLE. DAMAGE TO ASSEMBLY MAY RESULT AND VOID WARRANTY.

**CAUTION**

DO NOT WELD TO OR MODIFY PERFORMANCE STRUTS/SOCKS IN ANY WAY. DAMAGE TO UNIT MAY OCCUR AND WILL VOID WARRANTY.

**WARNING**

AFTER INSTALLATION, ENSURE ALL ORIGINAL EQUIPMENT VEHICLE SAFETY FEATURES ARE PROPERLY CALIBRATED BY A QUALIFIED TECHNICIAN. CHANGING VEHICLE HEIGHT MAY AFFECT FUNCTIONING OF SAFETY SENSORS AND CAMERAS.

C. Installation Diagram

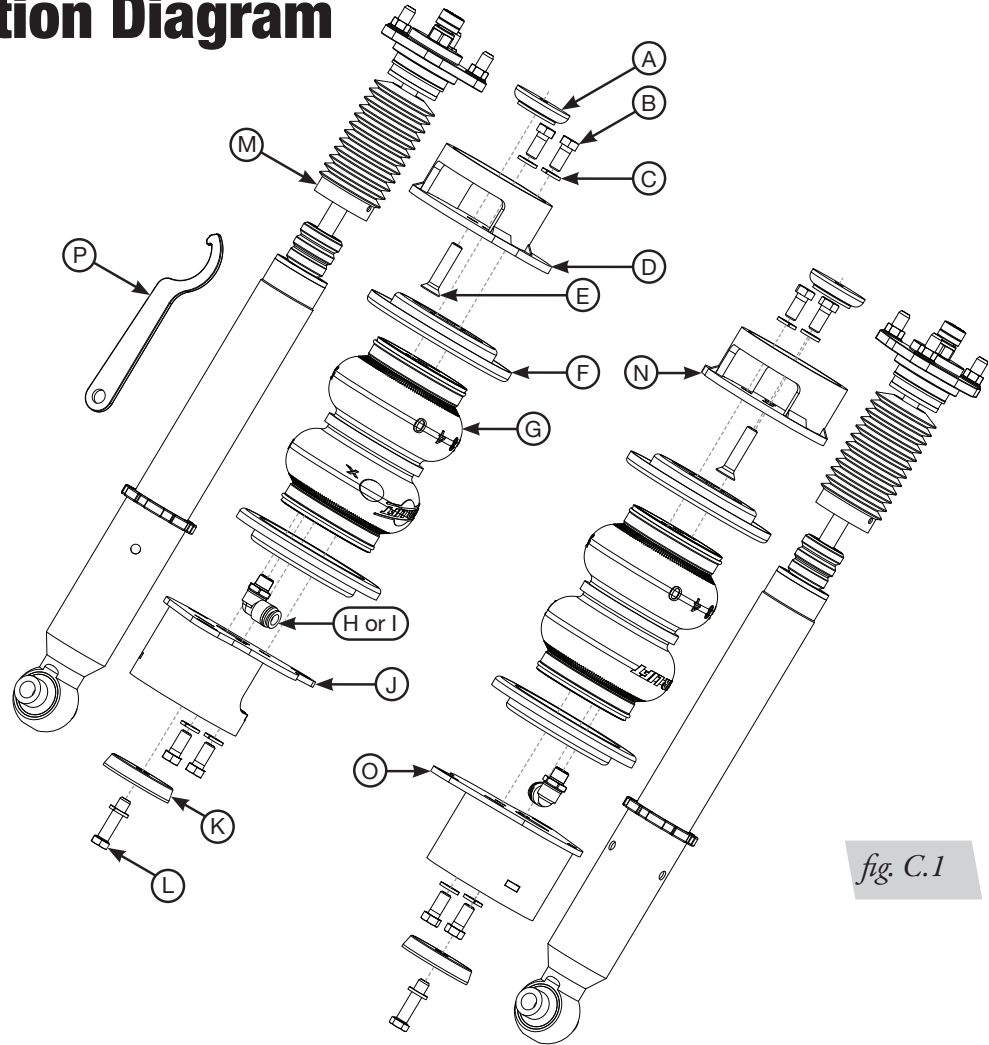
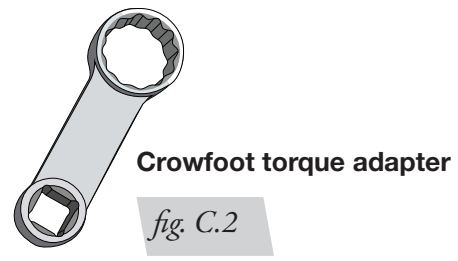


fig. C.1

Item	Part #	Description	Qty
A	13321	Upper centering spacer.....	2
B	17203	3/8"-24 x 7/8" Hex-head bolt.....	8
C	18427	3/8" Lock washer.....	10
D	07047	Left rear upper bracket.....	1
E	17415	3/8"-16 x 1 3/4" Flat-head socket cap bolt.....	2
F	11803	Roll plate.....	4
G	58535	Air spring	2
H	21779	1/4" MNPT x 1/4" PTC Elbow fitting	2
I*	21851	1/4" MNPT x 3/8" PTC Elbow fitting	2
J	03029	Left rear lower bracket.....	1
K	13322	Lower centering spacer.....	2
L	17108	3/8"-16 x 1 1/2" Hex-head bolt	2
M	26868	Rear shock.....	2
N	07046	Right rear upper bracket.....	1
O	03028	Right rear lower bracket	1
P		Spanner wrench.....	1

* 1/4" FNPT X 3/8" PTC are NOT included in this kit, but are available as a special order



SPECIAL TOOLS REQUIRED

Description.....	Qty
Hex key socket set.....	1
9/16" Crowfoot torque adapter (Fig. C.2).....	1



Missing or damaged parts? Call Air Lift customer service at (800) 248-0892 for a replacement part.

D. Installing the Air Suspension

NOTE

See "Important Safety Notices" on page 2.

REMOVING THE STOCK SUSPENSION

CAUTION

USE SAFETY STANDS TO SUPPORT THE VEHICLE IF USING A JACK TO LIFT IT.

1. Remove the wheel and support the hub.
2. Remove the fender liner.
3. Disconnect the sway bar end link from the control arm (Fig. D.1).

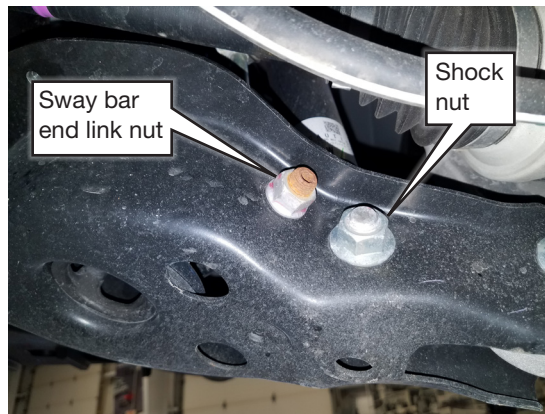


fig. D.1

4. Unbolt the shock from the control arm (Fig. D.1).
5. Loosen the lower control arm inner pivot bolt.
6. With the lower control arm supported, disconnect the control arm from the hub (Fig. D.2).



fig. D.2

7. Lower the control arm until the spring is relaxed. Remove the spring and rubber isolators (Fig. D.3).

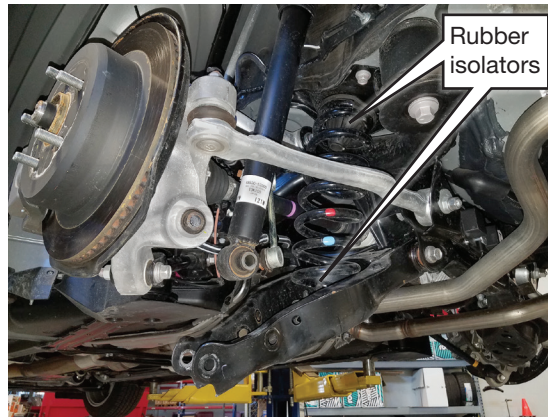


fig. D.3

8. From within the luggage compartment, pull the carpet back to access the upper shock mount and remove the upper shock mount nuts. Remove the shock assembly (Fig. D.4).



fig. D.4

INSTALLING THE AIR SUSPENSION

1. Install the Air Lift Performance shock in the vehicle and attach with the upper mount nuts. Torque to 67Nm (49 lb.-ft.) (Fig. D.5).



fig. D.5

- Choose the appropriate swivel air fitting (H or I). Tighten the fitting to the air spring 1 3/4 turns beyond hand-tight (Fig. D.10).



fig. D.10

- Attach the air spring with a roll plate (F) to the installed upper mount. The air fitting on the bottom of the air spring must be toward the outside of the car (Fig. D.11). Torque the bolts to 27Nm (20 lb.-ft.) using a 9/16" crowfoot torque adapter (Fig. C.2).

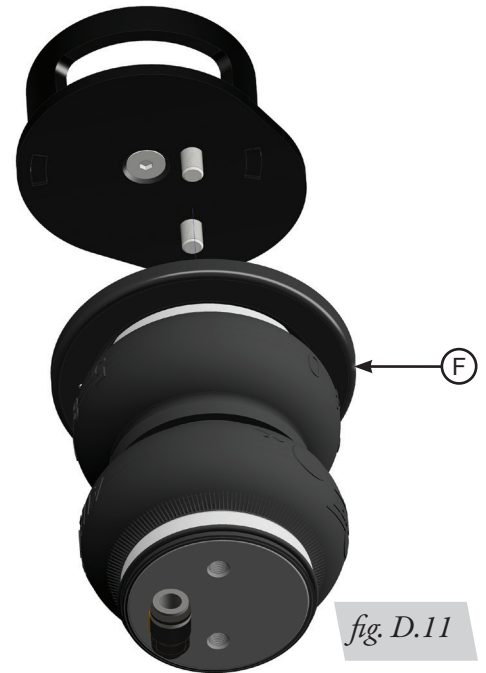


fig. D.11

- Assemble a roll plate (F) and the lower mount (J or O) to the air spring with 3/8"-24 x 7/8" bolts (B) and 3/8" lock washers (C) (Fig. D.12). Torque the bolts to 27Nm (20 lb.-ft.) using the crowfoot adapter.

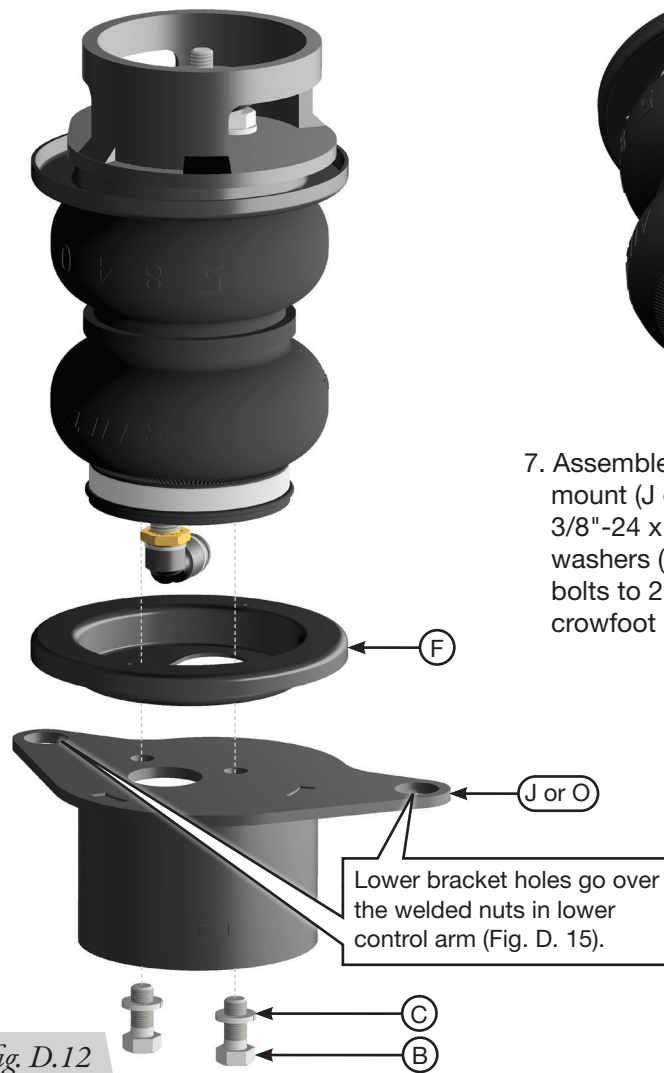


fig. D.12

8. Install the shock bushing spacers (Fig. D.13). Reconnect the lower control arm to the hub. Reattach the lower shock mount bolt and nut (Fig. D.14). Torque both, along with the lower control arm pivot bolt, during the "Set The Ride Height" steps.



fig. D.13



fig. D.14

9. Install the lower centering spacer (K) with 3/8"-16 x 1 1/2" hex-head bolt (L) and lock washer (C) through the lower control arm, attaching it to the lower bracket. Torque to 27Nm (20 lb.-ft.) (Figs. D.15 & D.16).

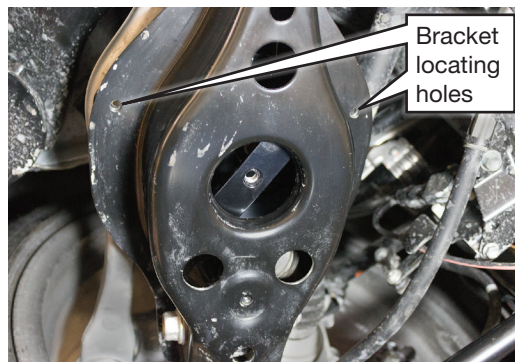


fig. D.15

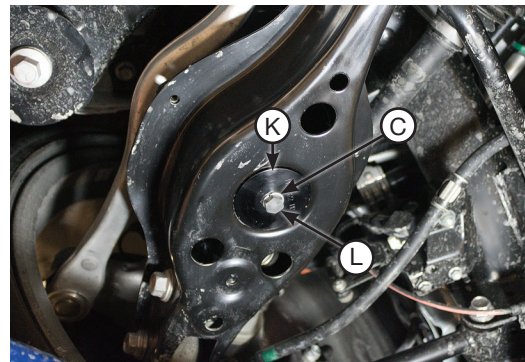


fig. D.16

10. Reattach the sway bar end link. Torque to 70Nm (52 lb.-ft.) (Fig. D.14).
11. Reinstall the fender liner.

ROUTING AIR LINES

1. Fully compress the suspension using a jack. With the suspension compressed, review the best routing for the air line that is clear of all suspension components and axle.
2. Routing should also allow for the suspension to extend without kinking or pulling the line tight or rubbing on other components. Check clearances to all other components.

WARNING

AFTER INSTALLATION, ENSURE ALL ORIGINAL EQUIPMENT VEHICLE SAFETY FEATURES ARE PROPERLY CALIBRATED BY A QUALIFIED TECHNICIAN. CHANGING VEHICLE HEIGHT MAY AFFECT FUNCTIONING OF SAFETY SENSORS AND CAMERAS.

E. Finished Installation

Fig. E.1 shows the finished installation.



fig. E.1

F. Before Operating

SET THE RIDE HEIGHT

1. Refer to the User Guide supplied with this kit to set up the suspension.

Torque Specifications		
Location	Nm	lb.-ft.
Upper shock mount nuts	67	49
Air spring attaching bolts	27	20
Upper and lower bracket mounting bolts	27	20
End link nut	70	52
Control arm pivot bolt	150	111
Lower shock mount bolt to control arm	110	81
Control arm to hub	145	107
Air fitting	1 3/4 turns beyond hand-tight	
Wheel studs	103	76

2. Upon successful completion of the installation, follow these pressure requirements for the air springs.



Suggested Driving Air Pressure



Maximum Air Pressure



FAILURE TO MAINTAIN ADEQUATE MINIMUM PRESSURE (OR PRESSURE PROPORTIONAL TO LOAD) MAY RESULT IN EXCESSIVE BOTTOMING OUT AND **WILL VOID THE WARRANTY.**

CHECK FOR BINDING



MAKE SURE THE FRONT WHEELS ARE STRAIGHT WHEN DEFLATING AND REINFLATING AIR SPRINGS.

1. Inflate and deflate the system (do not exceed 8.6BAR [125 PSI]) to check for clearance or binding issues. With the air springs deflated, check clearances on everything so as not to pinch brake lines, vent tubes, etc. Clear lines if necessary.
2. Inflate the air springs to 5.2-6.2BAR (75-90 PSI) and check all connections for leaks.

INSTALLATION CHECKLIST

- Clearance** — Inflate the air springs to 75-90 PSI (5.2-6.2BAR) and make sure there is at least 1/2" (13mm) clearance from anything that might rub against the air spring. This should be checked with the air spring fully inflated and fully deflated.
- Leak** — Inflate the air springs to 75-90 PSI (5.2-6.2BAR) and check all connections for leaks. All leaks must be eliminated before the vehicle is road tested.
- Heat** — Be sure there is sufficient clearance from heat sources, at least 152mm (6") from air springs and air lines. If a heat shield was included in the kit, install it. If there is no heat shield, but one is required, call Air Lift customer service at **(800) 248-0892**.
- Fastener** — Recheck all bolts for proper torque.
- Road** — Inflate the air springs to recommended driving pressures (Table 2). Drive the vehicle 10 miles (16km) and recheck for clearance, loose fasteners and air leaks.
- Operating instructions** — If professionally installed, the installer should review the operating instructions with the owner. Be sure to provide the owner with all paperwork that came with the kit.

DAMPING ADJUSTMENT

1. The dampers in this kit have 30 settings, or “clicks,” of adjustable compression and rebound damping characteristics. Damping is changed through the damper rod using the supplied adjuster (Figs. F.2 & F.3) or a 3mm hex key (not included).
2. Turn the adjuster clockwise (H) and the damping settings are hardened, reducing oscillations and body motion. Turn the adjuster counterclockwise (S) and the damping is softened.
3. Each damper in this kit is preset to “-20 clicks.” This means that the damper is adjusted 20 clicks away from full stiff, which starts at 0. Counting up from full stiff is the preferred method of keeping track of, or setting, damping. This setting was developed on a 2016 Lexus IS 200t with stock suspension.

For more information, refer to the User Guide.



fig. F.2



fig. F.3

Limited Warranty and Return Policy

Air Lift Company provides a 1-year limited warranty to the original purchaser of Air Lift Performance damper kits from the date of original purchase, that the products will be free from defects in workmanship and materials when used on vehicles as specified by Air Lift Company and under normal operating conditions, subject to the requirements and exclusions set forth in the full Limited Warranty and Return Policy that is available online at www.airliftperformance.com/warranty.

For additional warranty information contact Air Lift Company customer service.

Air Lift Company reserves the right to make changes and improvements to its products and publications at any time. For the latest version of this manual, contact Air Lift Company at (800) 248-0892 or visit www.airliftperformance.com.

Need Help?

Contact Air Lift Company customer service department by calling (800) 248-0892. For calls from outside the USA or Canada, dial (517) 322-2144.



CONNECT BY SEARCHING FOR **AIR LIFT PERFORMANCE** #LIFEONAIR



Thank you for purchasing Air Lift Performance products!



MADE IN USA
WITH GLOBAL
COMPONENTS

Air Lift Performance • 2727 Snow Road • Lansing, MI 48917 or P.O. Box 80167 • Lansing, MI 48908-0167
Toll Free (800) 248-0892 • Local (517) 322-2144 • Fax (517) 322-0240 • www.airliftperformance.com

Printed in the USA
JJC-1021

California: ⚠️ WARNING: Cancer and Reproductive Harm - www.P65Warnings.ca.gov