

# ROUGH COUNTRY

## SUSPENSION SYSTEMS®



**WARNING:** This product contains a chemical known to the State of California to cause Cancer and Reproductive Harm. For more information, go to [www.P65Warnings.ca.gov](http://www.P65Warnings.ca.gov).

## 2019-UP GMC SIERRA 1500 (ALL BED SIZES) SPORT STYLE FLARES

### PRIOR TO INSTALLATION

- A) Install the flares according to these written instructions with the hardware provided. **WARNING:** Failure to install according to these instructions will invalidate the warranty. This includes, but is not limited to, using alternative installation methods, hardware, or materials. **DO NOT USE:** Loctite, Superglue, or similar products on the hardware or the flares. Install flares on cleaned vehicle surfaces.
- B) **Fit:** Verify the fit of the flares to vehicle prior to installation (some filing, sanding, or cutting may be necessary to ensure proper fit).
- C) **Painting:** (Optional) if paint is desired it must be done prior to installing flares on vehicle. Clean outer surface with a good grade degreaser. **DO NOT USE LACQUER THINNER OR ENAMEL REDUCER AS A DEGREASER.** Wipe outer surface thoroughly with a tack rag prior to paint. Application of plastic adhesion promoter for ABS plastic as per your paint system manufacturer's recommendations is required. Paint flares using a high-quality enamel, or polyurethane automotive paint. If painting edge trim (not recommended), use a flex additive.
- D) **Performance:** Using larger tires may increase the area required to turn the vehicle. Some tire/rim combinations may require lowering bump stops and or installing steering stops to prevent tire from contacting flare.
- E) **Exhaust System:** Modifications may be necessary to maintain a minimum 4" clearance between flares and exhaust pipes. (Exhaust gases should not vent directly onto flares)
- F) **Metal Protection:** All exposed fasteners and bare metal should be treated with rust resistant paint **BEFORE** installing flares. Spray inner fender wells with undercoating **AFTER** flare attachments have been completed.
- G) **Decals:** Flares may interfere with existing decals on vehicle. If you wish, remove decals prior to installation of flares.
- H) **Care & Cleaning:** Fender flares are built to last; any detergent you use to wash your vehicle is sufficient to clean the flare. Do not use any harsh abrasive detergents.

### TOOLS FOR EASY INSTALLATION:

- Socket Wrench
- 10mm Socket
- T-15 Torx Bit
- Grease Pencil
- Phillips Screwdriver

**PLEASE READ:** Dirt and debris can become lodged between the fender flares and the vehicle's fenders, causing scratching and paint wear from vibration. Manufacturer is not responsible for any damage, and the installation of our fender flares is done with the buyer's understanding that this scratching and paint wear may occur.

**LIMITED LIFETIME WARRANTY AGAINST ANY MANUFACTURING DEFECTS:** To claim warranty you must provide Proof of Purchase.

## INCLUDED IN HARDWARE KIT:

1.



Foam Mounting Tab  
4 pcs

2.



"U" Clip  
22 pcs

3.



#10 Truss Head  
Screw  
22 pcs

4.



Edge Trim  
348 inches



### IF YOU PURCHASED GLOSSY BLACK FLARES (CODE "RCGB"):



Prior to beginning installation process, peel the protective liner from each plastic piece included in the flare kit – all flares and inner pieces.

NOTE: It will be difficult to remove liner once edge trim and hardware are installed.

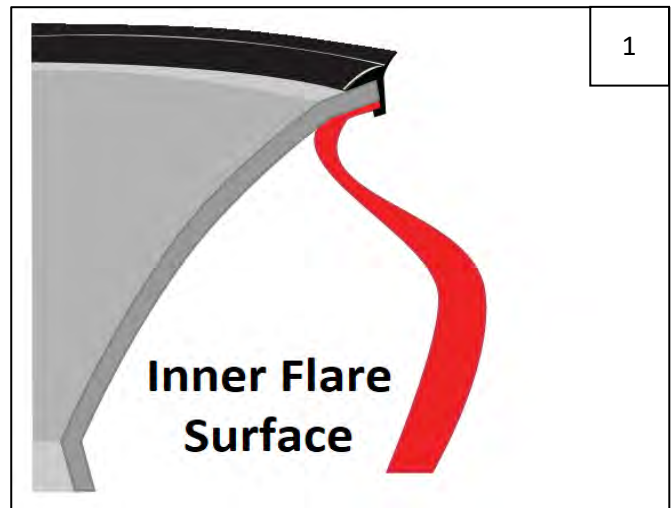
Once liner is removed, take care not to scratch flare surfaces. If flare needs to be cleaned, wipe gently with a clean soft cloth.



## SECTION 1: EDGE TRIM INSTALLATION

Using a debris-free soft cloth or alcohol wipe, clean vehicle at areas of installation.

Peel 2-3 inches of red vinyl backing away from supplied edge trim tape. Applying the adhesive side of the edge trim to the inner side of the flare, affix the edge trim to the top edge of the flare (the portion that comes in contact with the side of the vehicle).



## SECTION 2: FRONT FLARE INSTALLATION



Using a 10mm socket, remove 1 bolt from underside of factory mud guard, at rear of front wheel well. Then use a T-15 Torx bit to remove 1 factory screw. Retain all T-15 Torx screws for later use. Some will be used.



Remove 2 T-15 factory screws from mud guard at inside rear of wheel well. NOTE: It may help to turn the wheel for clearance.



Using a quick jerking motion down and toward you, pry forward mud guard from vehicle and discard.



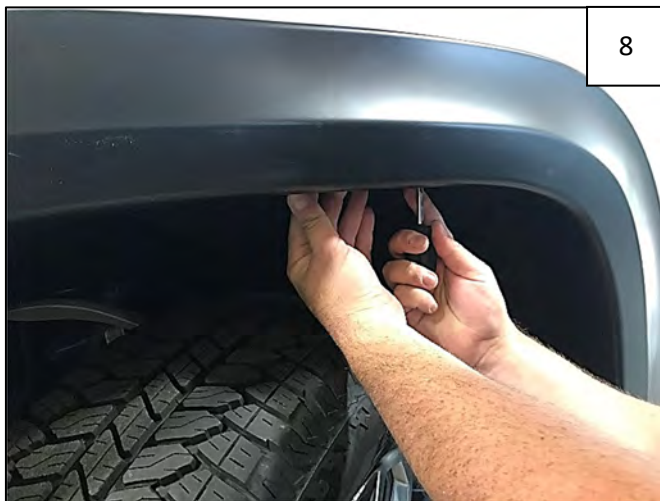
Remove 1 T-15 factory screw from wheel well (above mud guard area).



6 Hold flare firmly on vehicle. Using a grease pencil, mark 4 hole locations through flare onto fender lip.



7 Remove flare from fender and slide a supplied "U" Clip over plastic lip in 4 locations, centering over marks made in Step 6.



8 Holding flare firmly on fender, start 4 supplied #10 Truss-Head Screws through holes in flare and into clips installed in Step 7.



9 Install 2 factory T-15 Tox screws through rearward holes in flare and into factory holes in fender.



10 Press flare to fender and tighten all screws.



11 Complete Front Flare Installation.

## SECTION 4: REAR FLARE INSTALLATION



At front of rear wheel well, remove 2 T-15 bolts from underside of forward mud guard.



Remove 2 T-15 bolts from mud guard at inside front of wheel well.



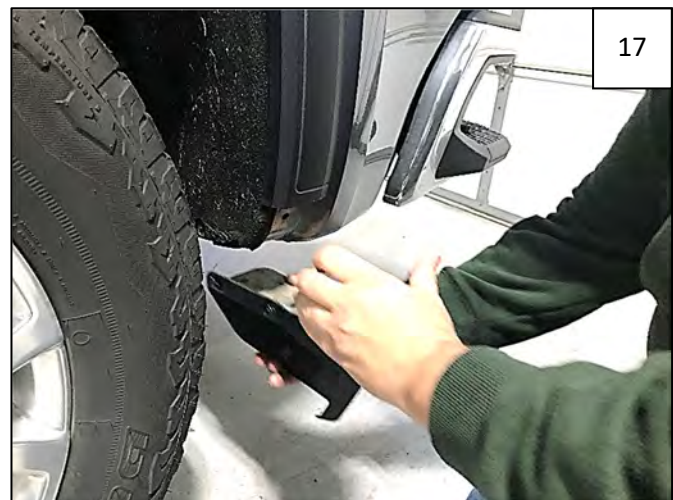
Using a quick jerking motion down and toward you, pry forward mud guard from vehicle and discard.



At rear of rear wheel well, remove 2 T-15 bolts from underside of rearward mud guard.



Remove 2 T-15 bolts from mud guard at inside rear of wheel well.



Using a quick jerking motion down and toward you, pry rearward mud guard from vehicle and discard.



Tuck factory splash shield into fender sheet metal lip at both front and rear of wheel well. The sheet metal lip will need to be accessible for clip installation in Step 23.



Hold flare firmly on vehicle. Using a grease pencil, mark 7 hole locations through flare onto fender lip.



Set flare aside. Peel liner from 2 supplied Foam Mounting Tabs and install over 2 lowermost clip locations marked in Step 19 – on the sheet metal exposed in Step 18.



Foam Mounting Tab locations.



Slide a supplied "U" Clip over plastic lip in 5 locations, centering over marks made in Step 19. Slide a "U" Clip over each Foam Mounting Tab installed in Step 21.



Holding flare firmly on fender, start 7 supplied #10 Truss-Head Screws through holes in flare and into clips installed in Step 22. Ensure flare fit and tighten all screws.



Complete Rear Flare Installation.