



WARNINGS & DISCLAIMERS

By installing this product you acknowledge that the suspension of this vehicle has been modified. As a result, this vehicle may handle differently than that of factory-equipped vehicles. As with any vehicle, Extreme Care must be used to prevent loss of control or roll-over during sharp turns or abrupt maneuvers. Always wear seat belts, and drive safely, recognizing that reduced speeds and specialized driving techniques may be required. Failure to drive this vehicle safely may result in serious injury or death. Do not drive this vehicle unless you are familiar with its unique handling characteristics and are confident of your ability to maintain control under all driving conditions. Some modifications (and combinations of modifications) are not recommended and may not be permitted in your state. Consult your owner's manual, the instructions accompanying this product, and state laws before undertaking these modifications. You are responsible for the legality and safety of the vehicle you modify using these components.

Limited Lifetime Warranty

ReadyAIR provides a limited lifetime warranty to the original purchaser of its load support products, that the product be free from defects in workmanship and materials when used on cars and trucks as specified by ReadyAIR and under normal operating conditions, subject to the requirements and exclusions set forth in the full Limited Warranty and Return Policy that is available at: ReadyLIFT.com/ReadyAIR/warranty.

READYGUARD Powertrain Warranty

ReadyLIFT is proud to offer its customers a FREE powertrain warranty. The most popular line of suspension products on the market just got better with the introduction of an unprecedented 5 year - 60,000 mile Powertrain Warranty. To register please visit: ReadyLIFT.com/ready-guard

IMPORTANT INFO!

⚠ DO NOT OVERLOAD VEHICLE

This product does not increase your vehicle's maximum load capacity. Never exceed GVWR.

⚠ DO NOT OVER INFLATE

Do not exceed 150psi in the air springs.

⚠ DO NOT UNDER INFLATE

Maintain at least 10 psi in air springs when driving unloaded.

⚠ ADDING AIR

When loaded, add air until stock ride height is achieved.

⚠ CHECK TIRE CLEARANCE

Make sure that there is at least 1" clearance between the inside of tire and air spring assembly.

⚠ AVOID AIR LINE DAMAGE

Do not route air lines near hot exhaust or sharp corners.

⚠ CHECK YOUR HARDWARE

Retorque all fasteners after 500 miles.

PARTS INCLUDED

QTY	DESCRIPTION
1	DRIVER SIDE AIR SPRING ASSEMBLY
1	PASSENGER SIDE AIR SPRING ASSEMBLY
1	HARDWARE KIT
1	MANUAL INFLATION KIT
HARDWARE KIT CONTENTS	
88-23170 BAG 1	
2	M10-16MM HEX BOLT
2	JOUNCE BUMPER SPACER
1	THREAD LOCK TUBE (RED)
88-23170 BAG 2	
8	3/8"-16 4.5" CARRIAGE BOLT
8	3/8"-16 NYLON LOCKING NUT
8	3/8" FLAT WASHER
3	5/8"-11 4.5" HEX HEAD BOLT
1	5/8"-11 4" HEX HEAD BOLT
1	5/8" SPLIT LOCK WASHER
3	5/8"-11 NYLON LOCKING NUT
7	5/8" FLAT WASHER
4	AIR SPRING LOWER STRAP 3.5" CTC
88-23170 BAG 3	
2	CENTER PIN SPACER
8	AXLE U-BOLT SPACER
2	23170 7/16" LEAF SPRING CENTER PIN (SINGLE REAR WHEEL)
2	23170 1/2" LEAF SPRING CENTER PIN (DUAL REAR WHEEL)
2	1/2" SPLIT LOCK WASHER
2	1/2" WASHER
2	1/2"-13 HEX NUT

TOOLS REQUIRED

9/16" DEEP SOCKET	JACK & JACK STANDS
15/16" WRENCH & SOCKET	12MM WRENCH (X2)
15MM SOCKET	TORQUE WRENCH
17MM SOCKET	DRILL
SOCKET DRIVER	5/16" DRILL BIT
PLASTIC TRIMMING TOOL	AIR LINE CUTTER (RAZOR BLADE)

⚠ ATTENTION!

If your ReadyAIR product has a damaged or missing part, please contact customer service directly and a new replacement part will be sent to you immediately. For warranty issues, please return to the place of installation and contact ReadyAIR.

PARTS INCLUDED CONT'D

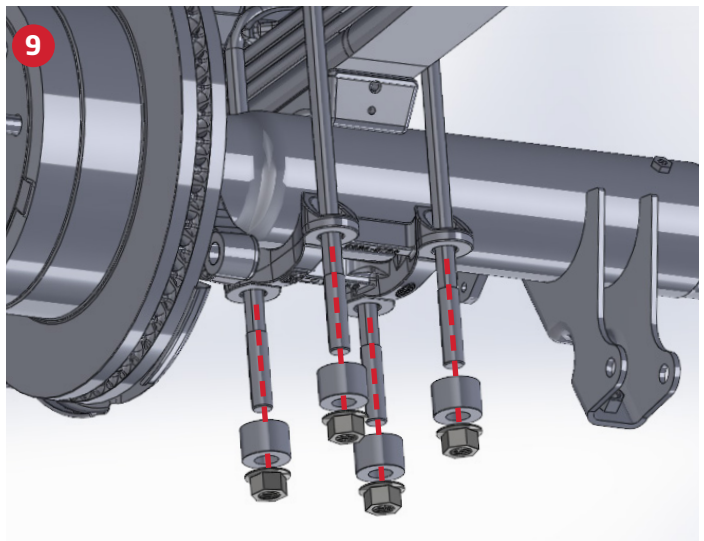
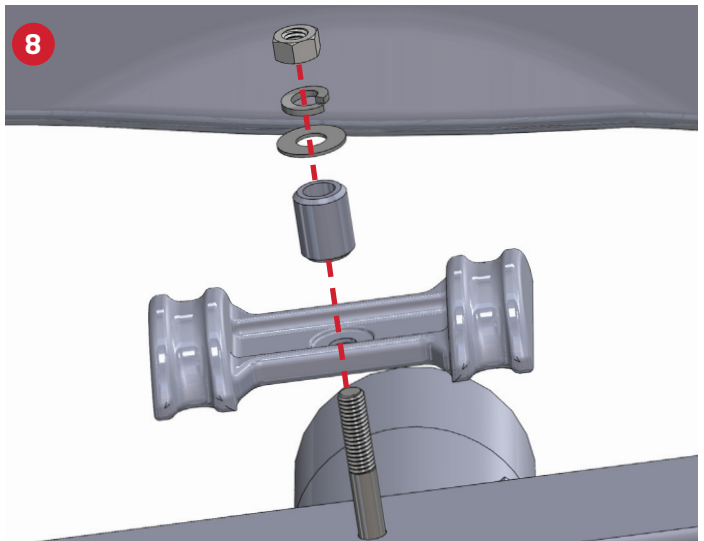
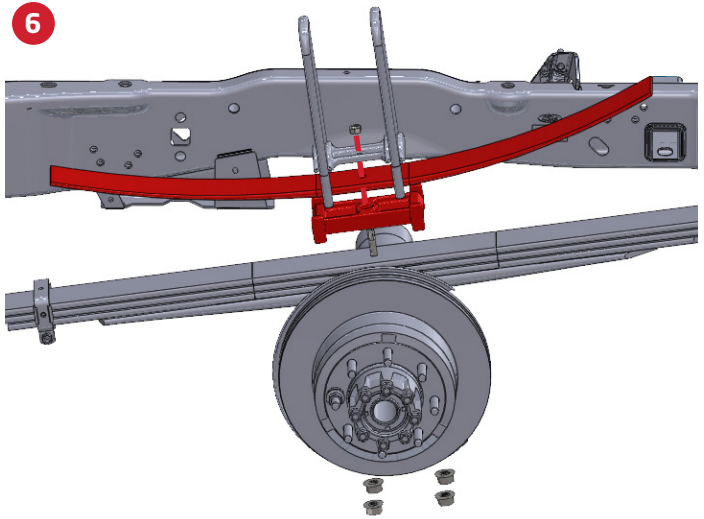
2	7/16" SPLIT LOCK WASHER
2	7/16" WASHER
2	7/16"-14 HEX NUT
MANUAL INFLATION KIT CONTENTS	
16	8" ZIP TIES
2	INFLATION VALVE TO 1/4" PTC FITTING
1	16' ROLL 1/4" AIRLINE

INSTALLATION PROCESS

1	Note original ride height measurement from center of rear fender arch to ground.
2	Safely lift truck and support with jack stands under axle.
3	Remove rear wheels.
4	Remove the factory overload springs one side at a time.
5	Spray factory center pin nuts and axle U-bolt nuts with penetrating oil.
6	Remove center pin nut and factory axle U-bolts. If factory center pin gets damaged during the removal process, refer to "ALTERNATE STEPS" .
7	Remove overload spring and overload spacer block.
8	Reinstall the factory U-bolt saddle and install the Center Pin Spacer flat washer, split washer, and center pin nut. Torque the center pin nut to 35 lb.ft
9	Reinstall factory U-bolt saddle and factory U-bolts with Axle U-bolt Spacers between the axle and the factory U-bolt nuts. Torque the U-bolt nuts in a cross pattern in 4 stages to the specifications shown in TABLE 1 .

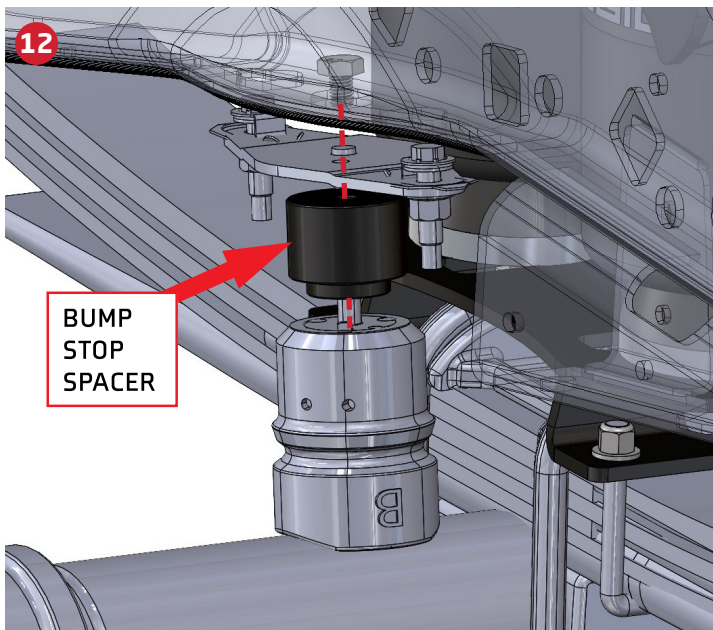
TABLE 1 (U-BOLT TORQUE)

SRW VEHICLES	
STAGE 1	48 LB.FT (65 NM)
STAGE 2	96 LB.FT (130 NM)
STAGE 3	148 LB.FT (200 NM)
STAGE 4	195 LB.FT (265 NM)
DRW VEHICLES	
STAGE 1	74 LB.FT (100 NM)
STAGE 2	148 LB.FT (200 NM)
STAGE 3	221 LB.FT (300 NM)
STAGE 4	295 LB.FT (400 NM)

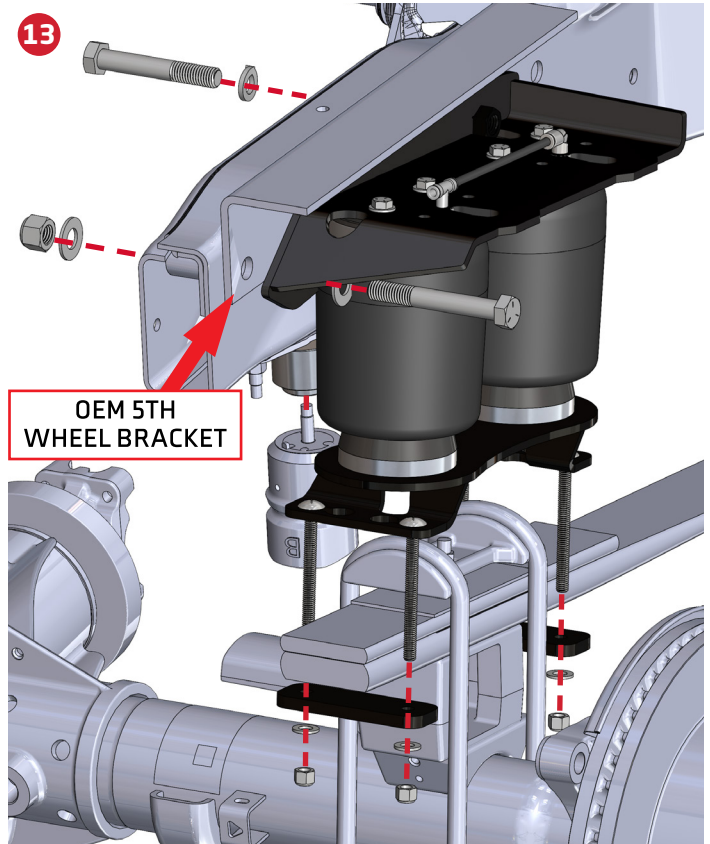


INSTALLATION PROCESS CONT'D

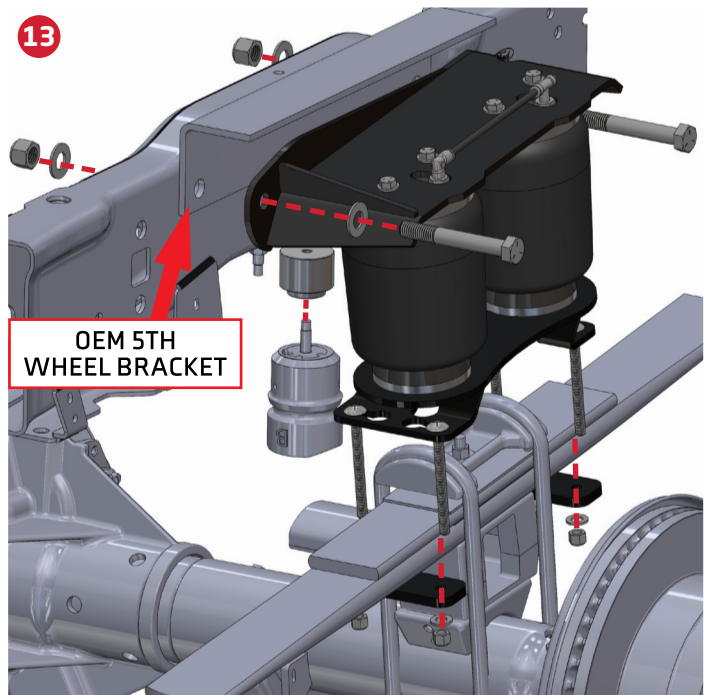
10	If vehicle is equipped with factory inner fender liners, use the templates supplied to mark and trim accordingly.
11	Unbolt factory bump stops.
12	Reinstall factory bump stops with provided aluminum spacer and longer bolt with Thread Locker applied to the bolt threads.
13	Fit Air Spring assemblies to frame. NOTE - If equipped with factory fifth wheel hitch, first remove the factory frame mounting hardware. Use the supplied hardware to attach the upper air spring brackets to the outside of the frame or hitch through the factory hitch mounting holes and torque to 110 lb.ft.
14	Install carriage bolts through the lower bracket and around leaf spring, then apply washers and nuts and snug. Make sure that the lower bracket is centered over the U-bolt saddle , then torque the U-bolt nuts to 20 lb.ft. (See image 14 on next page)
15	Mount inflation valves at desired location.
16	Route air line from each inflation valve to each air fitting tee on both of the air spring assemblies. Avoid hot exhaust and sharp edges. Cut air line square and free from burrs with air line cutter or razor blade!
17	Final Safety Checks:
	* Check for leaks at fittings with soapy water.
	* Check tire clearance to air spring (must be more than 1")
	* Verify all fasteners are torqued properly.
	* Verify at least 10 psi in air spring before driving.



PASSENGER SIDE

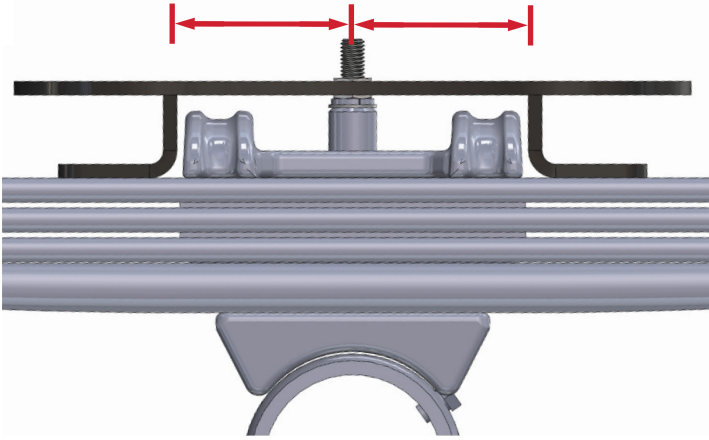


DRIVER SIDE

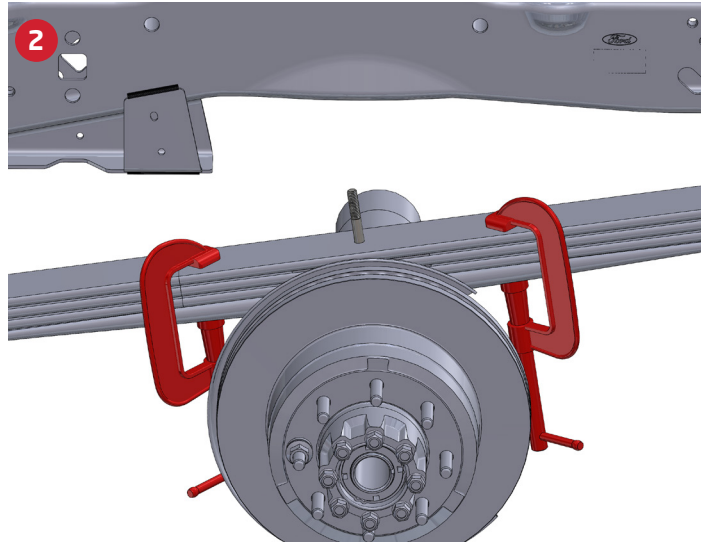


14

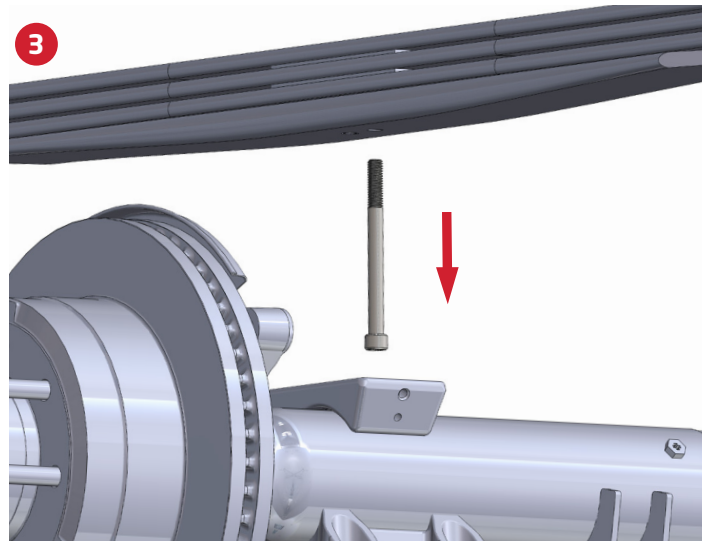
CENTER BRACKET



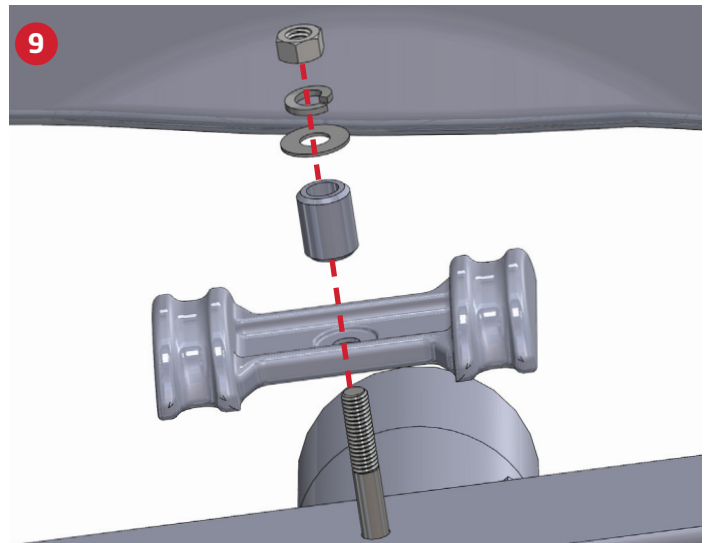
2



3



9



ALTERNATE STEPS

1	If your factory center pin was damaged, then you will replace it with the shorter replacement pins included.
2	Clamp the leafs together with C-clamps front and rear.
3	Raise the frame of the vehicle up until you have about 6 inches of working space between the bottom of the leaf pack and the top of the axle pad.
4	Remove the factory center pin from the leaf pack by driving it out from the top with a punch.
5	Install the new shorter leaf pack center pin that matches the diameter of the factory center pin (either 1/2" or 7/16").
6	Lower the frame so that the weight of the vehicle is sitting back on the axle. Note: Make sure that the head of the center pin properly aligns with the hole in the axle pad.
7	Reinstall the factory U-bolt saddle, flat washer, split washer, and center pin nut and torque to 35 lb.ft
8	Return to INSTALLATION STEP 9