

Installation Instructions

Eibach Inc. 264 Mariah Circle Corona, CA 92879
USA Tech Support 800-507-2338 ext. 114



LOAD-LEVELING-SYSTEM: AK31-59-006-01-02

Lexus GX460

Notes

FOR VEHICLES EQUIPPED WITH REAR SPRINGS OE (EXCLUDES AIR BAG MODELS)

200 lbs/in SPRING

Kit Contents

Description	Part Number	Quantity
ERS SPRING	1200.375.0200S	2
REAR ADJUSTER SUB ASSEMBLY	AK31-82-071-ADJ	1
BUMP STOP SUB ASSEMBLY	AK31-59-006-BMP	1
SPANNER WRENCH	ETLLS5.0	1

Installation Notes

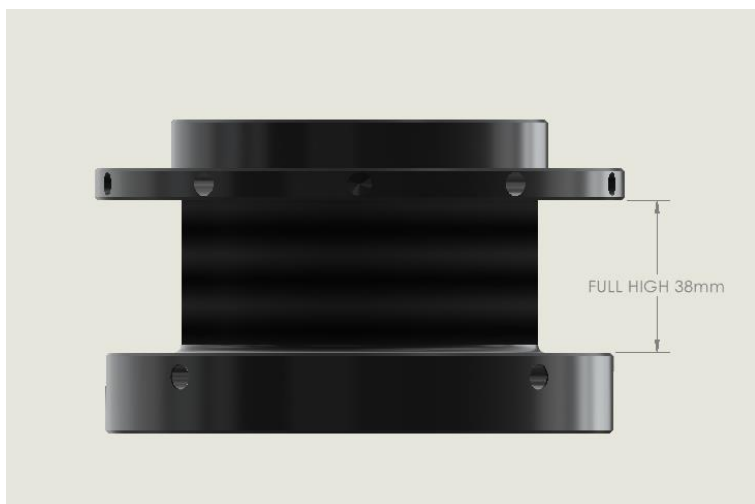
Read all instructions before beginning installation

- Only qualified mechanics experienced in the installation and removal of suspension components should perform this installation.
- Use of a hoist and screw jack is highly recommended and will substantially reduce installation time.
- Never work on or under a vehicle unless it is properly supported by safety stands and wheels are blocked.
- Never use impact wrenches or impact guns to install or remove shock absorber piston components, shafts and Piston rod nuts.
- All Eibach springs should be installed with the Eibach logo right-side-up. All original stock spring isolators and dampers should be retained from the stock springs when installing Eibach PRO-KIT springs.
- After Installation, inspect and adjust the following: Wheel Alignment; tire/wheel fender clearance when using aftermarket wheels or tires; brake line clearance and attachments; anti-lock-brake system sensors.
- Tire Rotation: In order to increase the life of your tires, it is recommended to rotate your tires every 3,000 miles.
- For MacPherson Strut type front suspension, it is important to mark the orientation of the upper perch with respect to the lower perch before disassembly. This orientation must remain the same with the installation of the springs. Noise may result if this procedure is not performed correctly.

Note: This Eibach Load Leveling System is designed to be used on vehicles with 0-200 lbs. of additional weight in the rearward area of the truck. See the diagram and chart below for approximate heights with the preload collar set at full high with the corresponding weight.

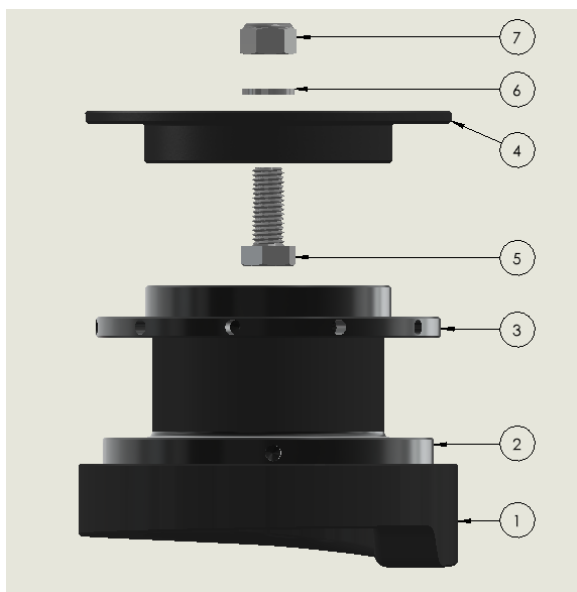
Note: Do not go past the full high measurement shown below.

Note: The Eibach Load Leveling System must not be used with the OE shocks. Extended travel shocks are required to avoid damage to the suspension.



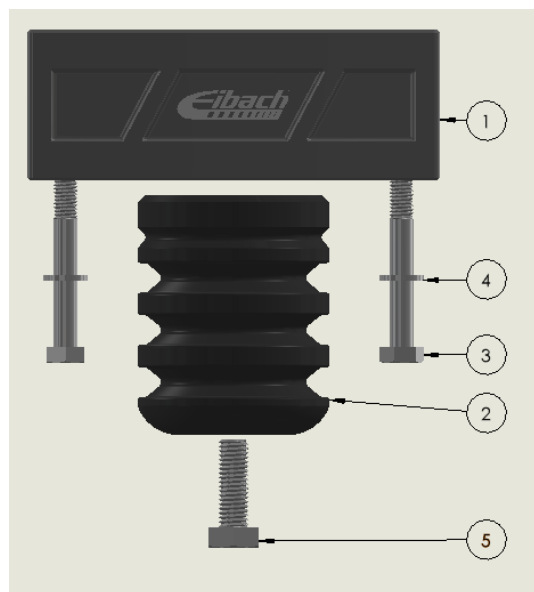
APPROXIMATE LIFT HEIGHTS	
ADDITIONAL WEIGHT	LIFT AT FULL HIGH
0LBS	1.25"
100LBS	1"
200LBS	0.75"

AK31-82-071-ADJ



1. URETHANE HELICAL RISE ADAPTER x 2
2. THREADED HOUSING x 2
3. SPRING PERCH x 2
4. UPPER SPRING ADAPTER x 2
5. M12X1.75X30 BOLT x 2
6. M12 WASHER x 2
7. M12X1.75 NYLOC NUT x 2

AK31-59-006-BMP



1. BUMP STOP MOUNT x 2
2. BUMP STOP x 2
3. M8X1.25X60 BOLT x 4
4. M8 WASHER x 4
5. M10X1.5X30 BOLT x 2



1. Begin by raising the vehicle and supporting it with the proper safety equipment. **Note: Never work on or under a vehicle that is not supported by the proper safety equipment.**



2. Loosen and remove the bolts that secure the OE bump stop to the chassis as shown, then, remove the bump stop.



3. Use the M10 x 1.5 x 30mm bolts to secure the provided Eibach bump stop to the Eibach bump stop mount as shown.



4. Install the new bump stop assembly using the M8 x 1.25 x 60mm bolts and M8 flat washers as shown.



5. Use a screw or pole jack to support the rear axle as shown.



6. Disconnect the end link from the anti-roll bar as shown.



7. Loosen and remove lower shock bolt.



8. Remove the lower shock mount from the axle



9. You can now lower the axle downward and remove the OE spring as shown. **Note: Do not stretch brake lines/ABS lines, vent lines as this could cause failure of these components.**



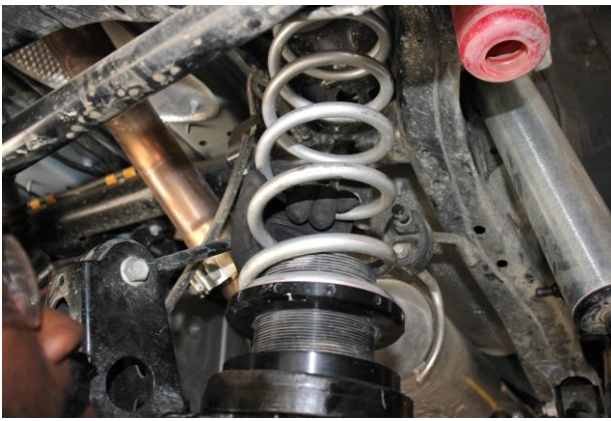
10. Install the provided spring perch adapter and secure it with the M12 x 1.75 x 30mm hex screw, and M12 washer/nut.



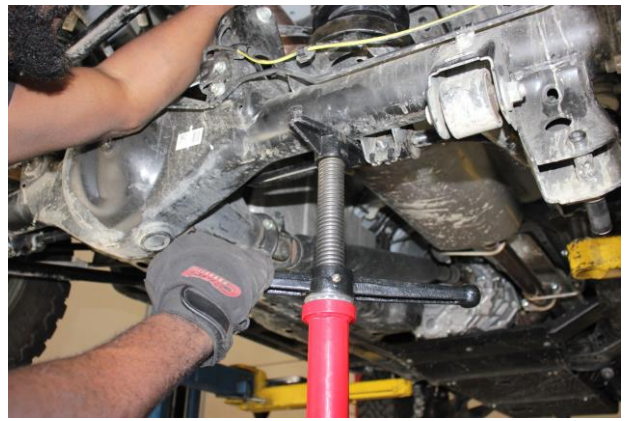
11. Install the provided urethane adapter to the spring mount on the axle, lining up the helical rise on the adapter with helical rise on the axle as shown.



12. Install the adjustable spring perch assembly onto the urethane spring perch adapter on the axle as shown.



13. Pull down on the axle and install the supplied spring. **Note: Do not stretch brake lines/ABS lines, or vent lines as this could cause failure of these components.**



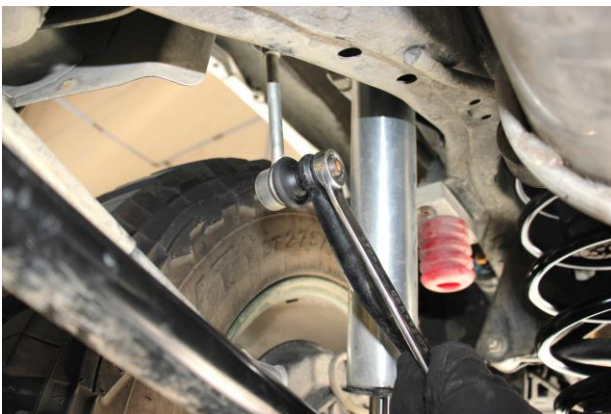
14. Compress the spring enough to install the lower mount of the shock to the axle.



15. Ensure the spring is properly seated on the upper adapter, lower spring seat, and that the urethane adapter is seated correctly on the axle.



16. Secure the shock mount to the axle using the OE hardware as shown.



17. Reconnect the end link to the anti-roll bar with the OE hardware as shown.

18. Repeat this procedure on the opposite side. Double check to make sure everything is properly positioned and tightened, then, road test the vehicle and re-torque if necessary. After 500 miles of driving doublecheck and re-torque to make sure all hardware is still properly tightened as a safety precaution.