

Installation Instructions

Eibach Inc .264 Mariah Circle Corona, CA 92879 USA Tech Support 800-507-2338 ext. 114



ANTI ROLL KIT #E40-214-001-01-10

Kit Contents

Description	Part Number	Quantity
Front Anti Roll Bar	AS41-214-001-01-FA	1
Front Hardware Kit	AK41-214-001-01-FA	1

Notes

Read all instructions before beginning installation

Only qualified mechanics experienced in the installation and removal of suspension components should perform this installation.

Use of a hoist and screw jack is highly recommended and will substantially reduce installation time.

Never work on or under a vehicle unless it is properly supported.

Installation



Step 1

Step 1. Remove the grill.



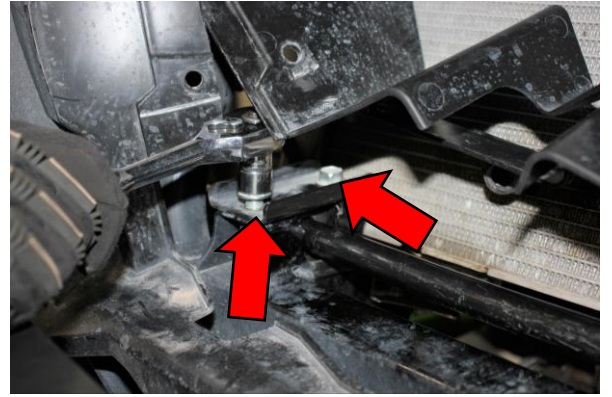
Step 2

Step 2. Remove the plastic rivet that secures the plastic valance.



Step 3

Step 3. Remove the hex screw that secures the plastic valance.



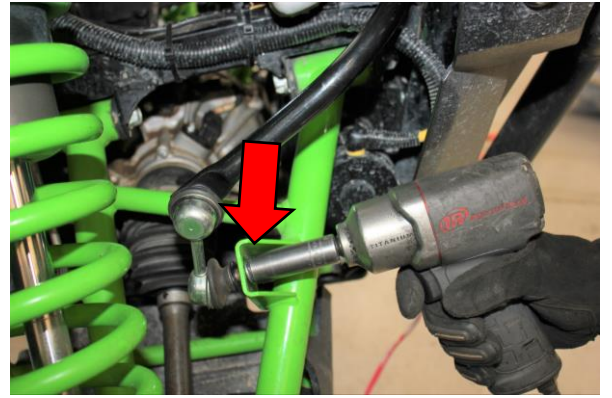
Step 4

Step 4. Lift up on the plastic valance, then, remove the two hex bolts that secure the bushing bracket.



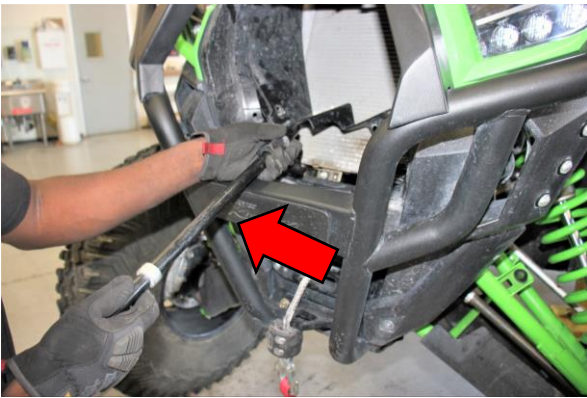
Step 5

Step 5. Remove the bushing bracket.



Step 6

Step 6. Loosen and remove the hardware that secures the end link to the control arm.



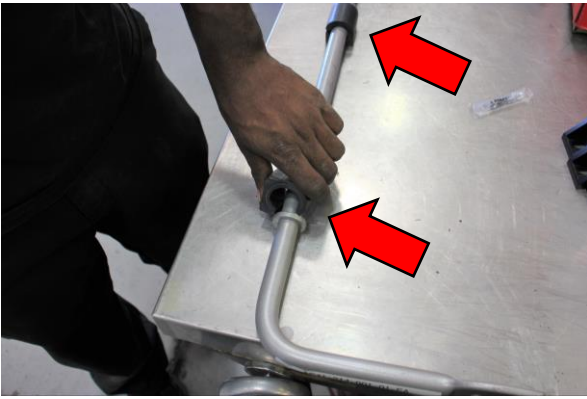
Step 7

Step 7. Remove the bar from the vehicle.



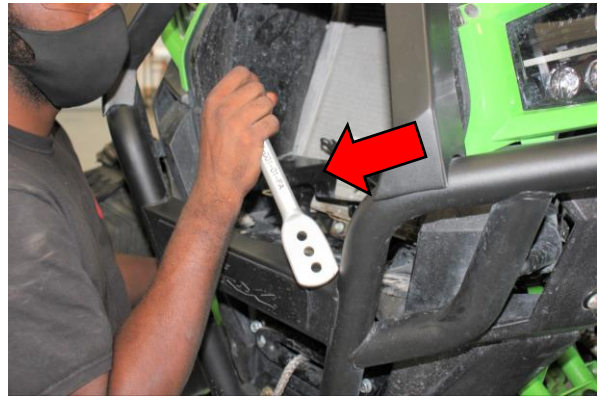
Step 8

Step 8. Apply the supplied lubricant to the inside of the Eibach bushing.



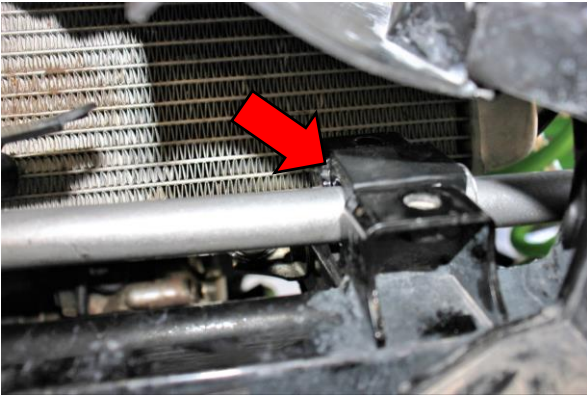
Step 9

Step 9. Install the Eibach bushing on the Eibach bar.



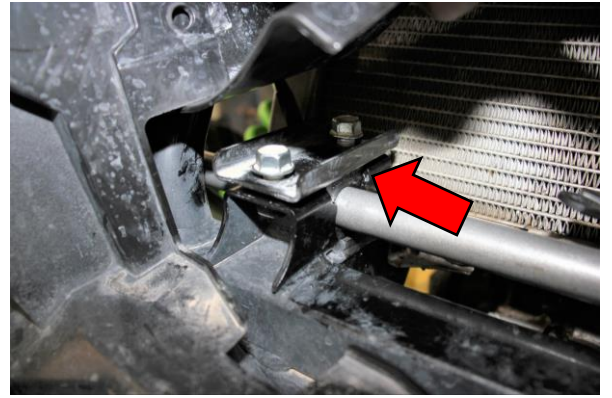
Step 10

Step 10. Install the Eibach back into the vehicle.



Step 11

Step 11. Align the bushing with the bushing mounts.



Step 12

Step 12. Loosely install the OE brackets and the OE hardware.



Step 13

Step 13. Make sure everything is properly aligned, then, tighten the OE hardware.



Step 14

Step 14. Secure the OE end links to the control arm with the OE hardware.



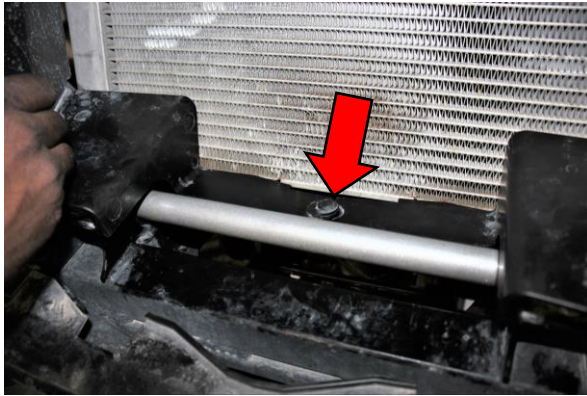
Step 15

Step 15. Secure the end link to the end of the bar with the OE hardware.



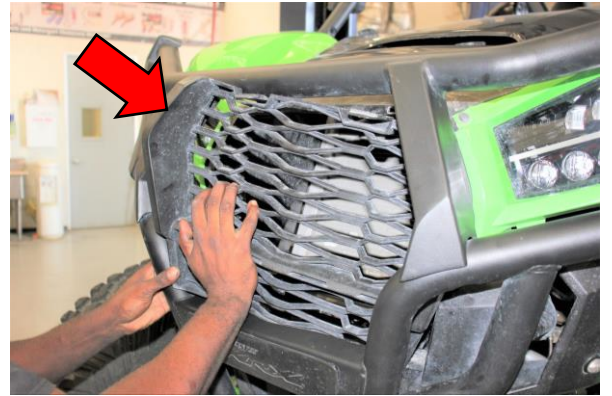
Step 16

Step 16. Secure the plastic valance with the OE hardware.



Step 17

Step 17. Reinstall the plastic rivet to secure the plastic valance.



Step 18

Step 18. Reinstall the OE grill.