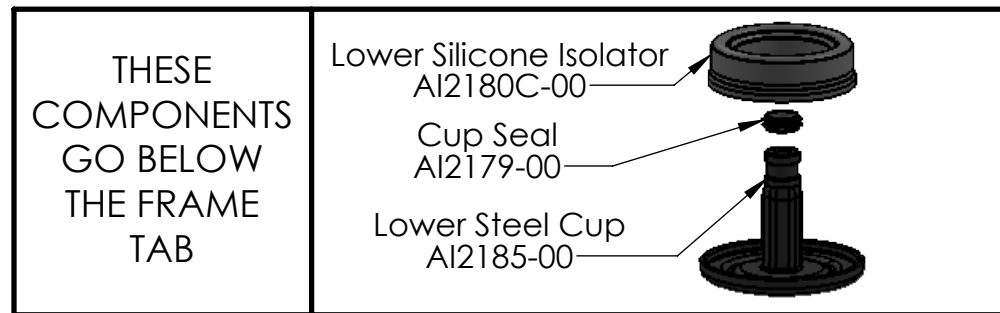
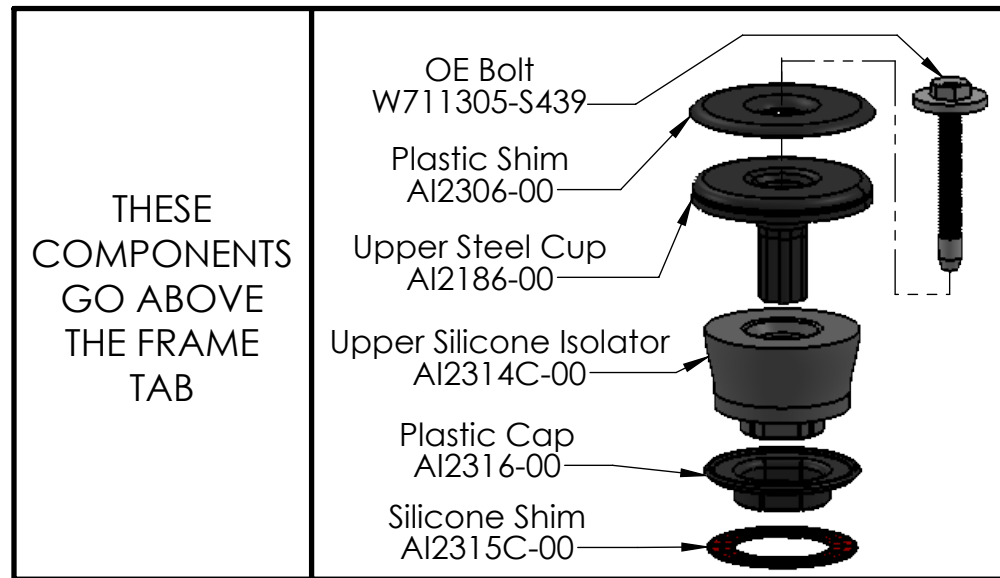
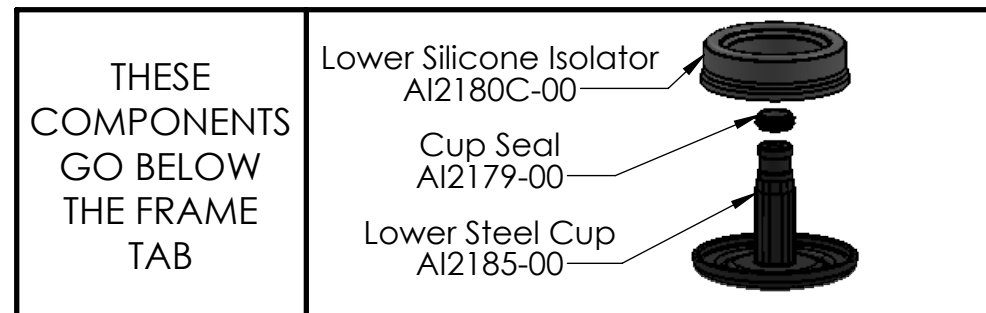
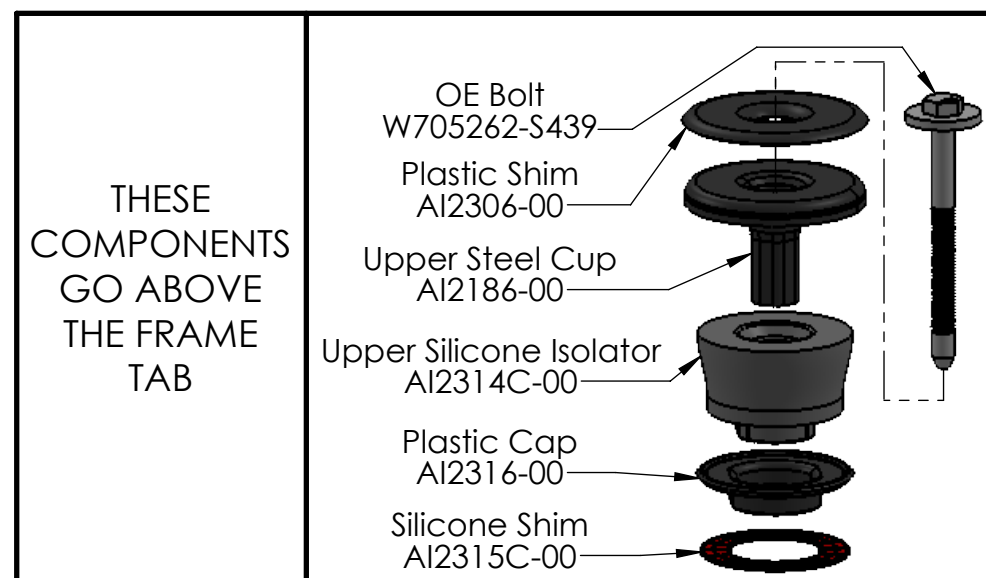


Rows #2 and #3



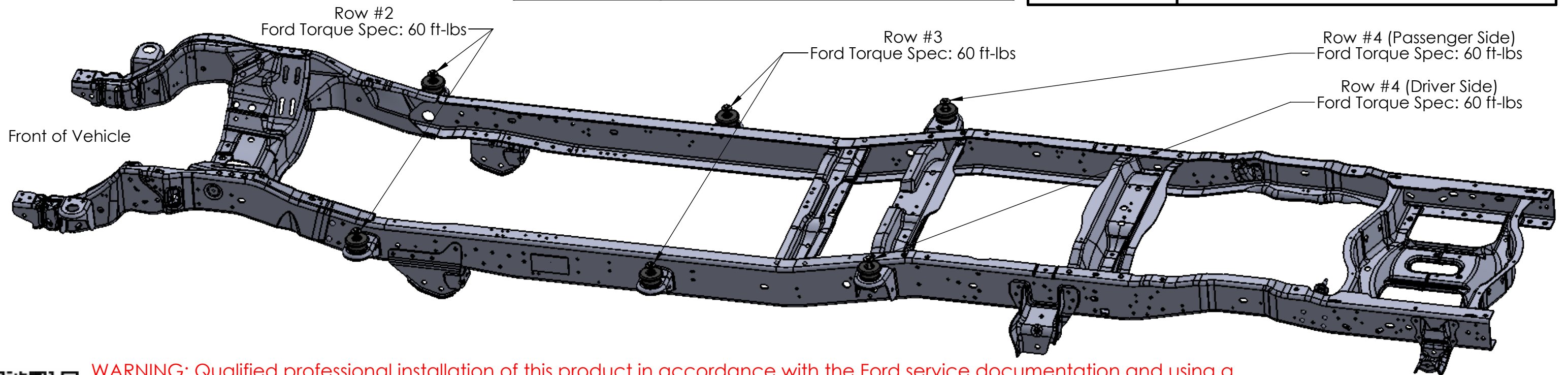
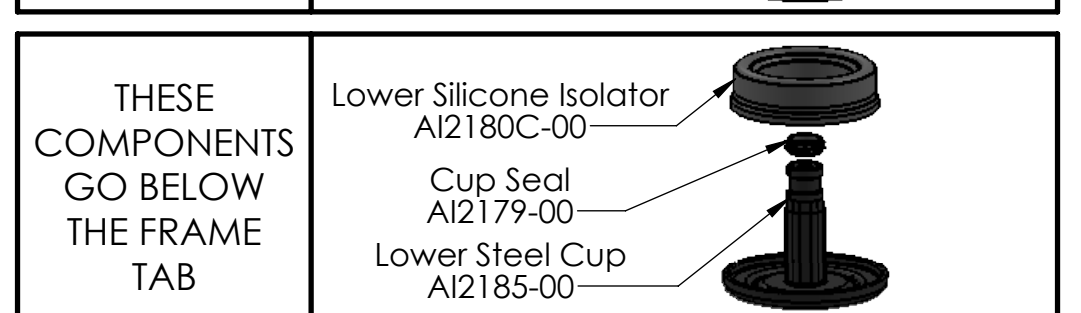
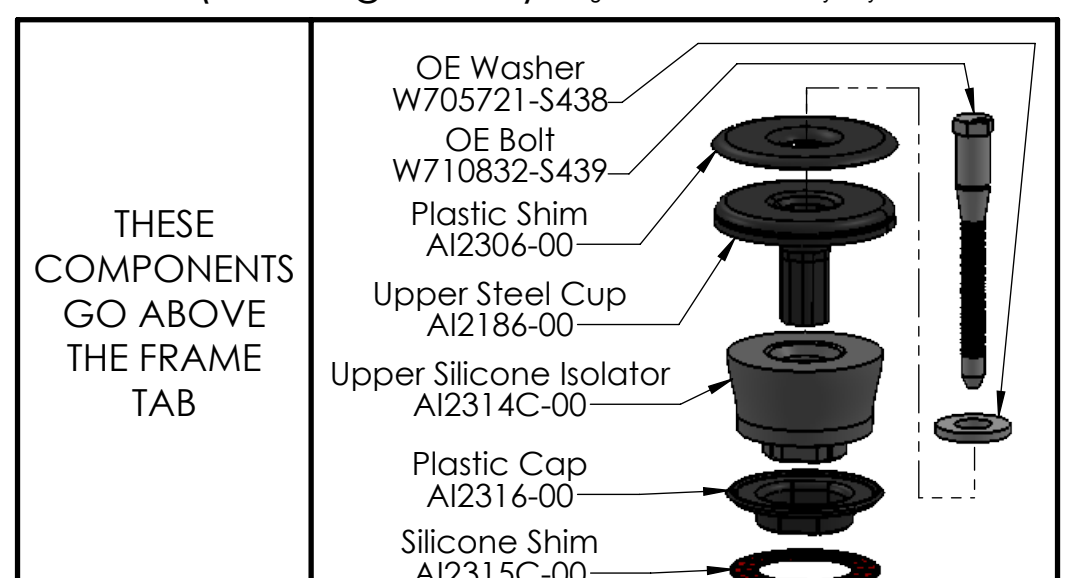
Row #4 (Driver Side)

Some trucks were assembled in the opposite configuration. Reinstall exactly as you removed them.



Row #4 (Passenger Side)

Some trucks were assembled in the opposite configuration. Reinstall exactly as you removed them.



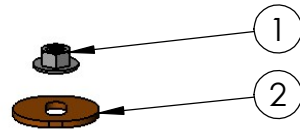
WARNING: Qualified professional installation of this product in accordance with the Ford service documentation and using a vehicle lift is required.

Install according to the supplied Ford Torque Spec for the best ride and to avoid damaging your truck. Do not attempt self-installation of this product or use an impact wrench at anytime. Self-installation using a jack or other lifting device could result in personal injury and/or damage to your vehicle. S&B shall not be liable for any loss, damage, including any incidental or consequential damages, fire, explosion, injury, or death as a result of self-installation of this product. The S&B Warranty will be voided if this product is not installed by a qualified professional or if an impact wrench is used. Visit sbfilters.com for warranty and other information.

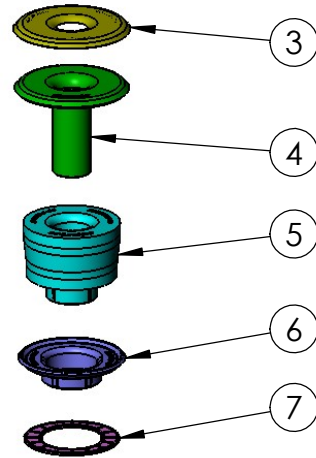


Part Number: 81-1005
1999-2003 Ford F250-F550
5.4L, 6.8L, 7.3L, Crew Cab

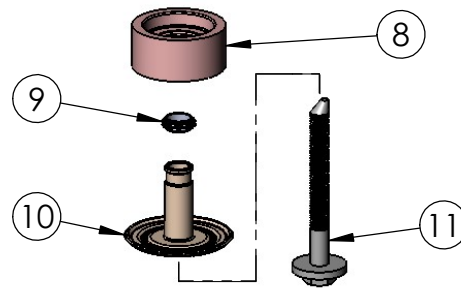
THESE COMPONENTS GO
INSIDE THE ENGINE BAY



THESE COMPONENTS GO
ON TOP OF THE BOXED FRAME



THESE COMPONENTS GO
INSIDE THE BOXED FRAME



ITEM NO.	PartNo	DESCRIPTION	QTY.
1	AI2406-00	FORD N801995-S436 (M12 LOCKING NUT W/ WASHER)	1
2	AI2405-00	UPPER WASHER	1
3	AI2404-00	PLASTIC SHIM	1
4	AI2403-00	UPPER CUP	1
5	AI2399C-00	UPPER ISOLATOR	1
6	AI2400-00	PLASTIC CAP	1
7	AI2401C-00	SILICONE SHIM	1
8	AI2398C-00	LOWER ISOLATOR	1
9	AI2179-00	CUP SEAL	1
10	AI2402-00	LOWER CUP	1
11	AI2204-00	FORD W712879-S439	1

TORQUE NUT TO 60 FT-LBS.

INSTALL COMPONENTS IN THE CORRECT LOCATION
ACCORDING TO THIS DIAGRAM. COMPONENTS
INSTALLED INCORRECTLY WILL CAUSE CLUNKING
NOISE AND MAY RESULT IN DAMAGE TO THE VEHICLE.