

PROPRIETARY AND CONFIDENTIAL
THE INFORMATION CONTAINED IN THIS DRAWING IS THE SOLE PROPERTY
OF S&B FILTERS, INC. ANY REPRODUCTION IN PART OR AS A WHOLE
WITHOUT THE WRITTEN PERMISSION OF S&B FILTERS, INC. IS PROHIBITED.

1980-1996 FORD F-SERIES (OBS)

REMOVAL TOOLS

THESE PARTS ARE USED TO REMOVE THE
OEM LOWER CAB MOUNT PARTS.



AI2417-00
REMOVAL TOOL, ROW 3



AI2416-00
REMOVAL TOOL, ROW 2



AI2425-00
7-16"-14 X 3" THREADED ROD



AI2426-00
7/16" SIZE WASHER



AI2427-00
7/16"-14 NUT

CAB LEVELING KIT

THESE PARTS CAN BE USED TO LEVEL THE CAB
WITH THE BED AS NEEDED. THEY CAN BE STACKED
TOGETHER. THEY GO BETWEEN THE UPPER STEEL CUP
AND THE CAB. THERE SHOULD ALWAYS BE AT LEAST
ONE THINNER PLASTIC SHIM DIRECTLY UNDERNEATH
THE CAB.



6X AI2415-00
PLASTIC SHIM

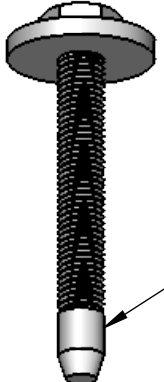
6X AI2435-00
PLASTIC SPACER

PROPRIETARY AND CONFIDENTIAL
THE INFORMATION CONTAINED IN THIS DRAWING IS THE SOLE PROPERTY
OF S&B FILTERS, INC. ANY REPRODUCTION IN PART OR AS A WHOLE
WITHOUT THE WRITTEN PERMISSION OF S&B FILTERS, INC. IS PROHIBITED.

1980-1996 FORD F-SERIES (OBS)

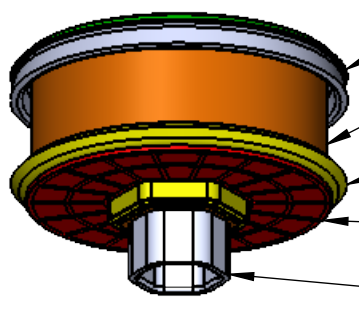
ROW #1

B

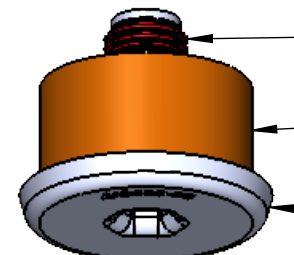
<p>INSTALL FROM INSIDE THE CAB</p>	 <p>AI2202-00 - BOLT, M12 X 95 60 FT-LBS</p>
--	---

B

A

<p>THESE COMPONENTS GO ABOVE THE FRAME MOUNTING TAB</p>	 <p>AI2415-00 - PLASTIC SHIM AI2422C-00 - UPPER ISOLATOR AI2413-00 - PLASTIC CAP AI2418C-00 - SILICONE SHIM AI2421-00 UPPER STEEL CUP</p>
---	---

A

<p>THESE COMPONENTS GO BELOW THE FRAME MOUNTING TAB</p>	 <p>AI2179-00 - RUBBER SEAL AI2411C-00 - LOWER ISOLATOR AI2409-00 - LOWER STEEL CUP</p>
---	--

INSTALL COMPONENTS IN THE CORRECT LOCATION ACCORDING TO THIS DIAGRAM. COMPONENTS INSTALLED INCORRECTLY WILL CAUSE CLUNKING NOISE AND MAY RESULT IN DAMAGE TO THE VEHICLE. USE HAND TOOLS ONLY TO REMOVE OR INSTALL BOLTS! USING AN IMPACT WRENCH MAY RESULT IN DAMAGE TO THE BOLTS OR NUT ASSEMBLIES.

Warning: Qualified professional installation of this product in accordance with Ford service procedures using proper equipment is required. S&B shall not be liable for any loss, damage, including any incidental or consequential damages, fire, explosion, injury, or death as a result of self-installation of this product. The S&B Warranty will be voided if this product is not installed by a qualified professional or if an impact wrench is used. Visit sbfilters.com for warranty and other information.

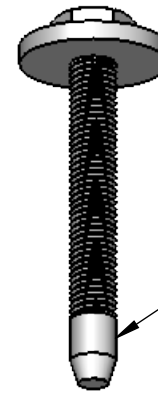


PROPRIETARY AND CONFIDENTIAL
THE INFORMATION CONTAINED IN THIS DRAWING IS THE SOLE PROPERTY
OF S&B FILTERS, INC. ANY REPRODUCTION IN PART OR AS A WHOLE
WITHOUT THE WRITTEN PERMISSION OF S&B FILTERS, INC. IS PROHIBITED.

1980-1996 FORD F-SERIES (OBS)

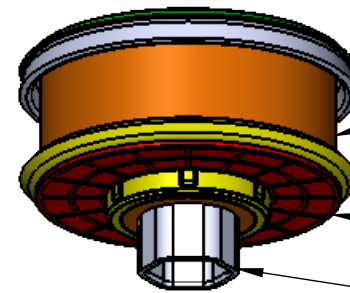
ROW #2

INSTALL FROM
INSIDE THE CAB



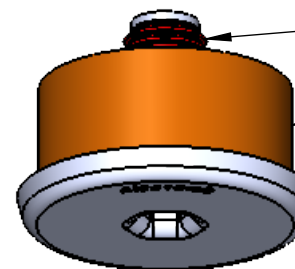
AI2202-00 - BOLT, M12 X 95
60 FT-LBS

THESE COMPONENTS
GO ABOVE THE FRAME
MOUNTING TAB



AI2415-00 - PLASTIC SHIM
AI2423C-00 - UPPER ISOLATOR
AI2414-00 - PLASTIC CAP
AI2419C-00 - SILICONE SHIM
AI2421-00 - UPPER CUP

THESE COMPONENTS
GO BELOW THE FRAME
MOUNTING TAB



AI2179-00 - CUP SEAL
AI2412C-00 - LOWER ISOLATOR
AI2410-00 - LOWER CUP

INSTALL COMPONENTS IN THE CORRECT LOCATION ACCORDING TO THIS DIAGRAM. COMPONENTS INSTALLED INCORRECTLY WILL CAUSE CLUNKING NOISE AND MAY RESULT IN DAMAGE TO THE VEHICLE. USE HAND TOOLS ONLY TO REMOVE OR INSTALL BOLTS! USING AN IMPACT WRENCH MAY RESULT IN DAMAGE TO THE BOLTS OR NUT ASSEMBLIES.

Warning: Qualified professional installation of this product in accordance with Ford service procedures using proper equipment is required. S&B shall not be liable for any loss, damage, including any incidental or consequential damages, fire, explosion, injury, or death as a result of self-installation of this product. The S&B Warranty will be voided if this product is not installed by a qualified professional or if an impact wrench is used. Visit sbfilters.com for warranty and other information.



4

3

2

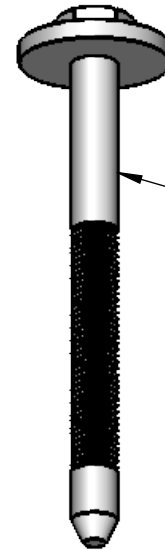
1

PROPRIETARY AND CONFIDENTIAL
THE INFORMATION CONTAINED IN THIS DRAWING IS THE SOLE PROPERTY
OF S&B FILTERS, INC. ANY REPRODUCTION IN PART OR AS A WHOLE
WITHOUT THE WRITTEN PERMISSION OF S&B FILTERS, INC. IS PROHIBITED.

1980-1996 FORD F-SERIES (OBS)

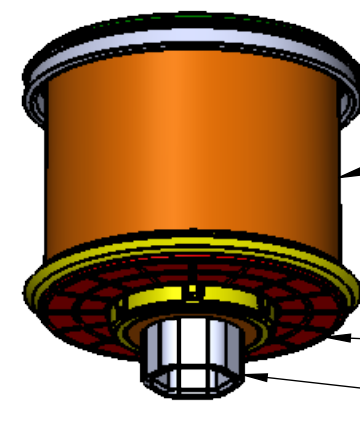
ROW #3

B

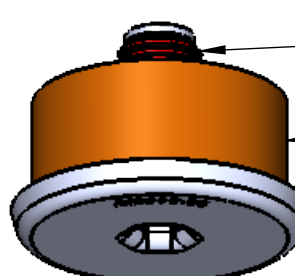
<p>INSTALL FROM INSIDE THE CAB</p>	 <p>AI2209-00 - BOLT, M12 X 140 60 FT-LBS</p>
--	--

B

A

<p>THESE COMPONENTS GO ABOVE THE FRAME MOUNTING TAB</p>	 <p>AI2415-00 - PLASTIC SHIM AI2424C-00 - UPPER ISOLATOR AI2414-00 - PLASTIC CAP AI2419C-00 - SILICONE SHIM AI2420-00 - UPPER CUP</p>
---	---

A

<p>THESE COMPONENTS GO BELOW THE FRAME MOUNTING TAB</p>	 <p>AI2179-00 - CUP SEAL AI2412C-00 - LOWER ISOLATOR AI2410-00 - LOWER CUP</p>
---	---

INSTALL COMPONENTS IN THE CORRECT LOCATION ACCORDING TO THIS DIAGRAM. COMPONENTS INSTALLED INCORRECTLY WILL CAUSE CLUNKING NOISE AND MAY RESULT IN DAMAGE TO THE VEHICLE. USE HAND TOOLS ONLY TO REMOVE OR INSTALL BOLTS! USING AN IMPACT WRENCH MAY RESULT IN DAMAGE TO THE BOLTS OR NUT ASSEMBLIES.

Warning: Qualified professional installation of this product in accordance with Ford service procedures using proper equipment is required. S&B shall not be liable for any loss, damage, including any incidental or consequential damages, fire, explosion, injury, or death as a result of self-installation of this product. The S&B Warranty will be voided if this product is not installed by a qualified professional or if an impact wrench is used. Visit sbfilters.com for warranty and other information.



4

3

2

1