

# ROUGH COUNTRY

## SUSPENSION SYSTEMS®

### FORD 2021-UP F-150 Rear Bumper

Thank you for choosing Rough Country for all your vehicle needs.

Please read instructions before beginning installation. Check the kit hardware against the kit contents shown below. Be sure you have all needed parts and know where they go.

If question exist, please call us @1-800-222-7023. We will be happy to answer any questions concerning this product.

Check all fasteners for proper torque. Check to ensure for adequate clearance between all components.

Periodically check all hardware for tightness.

#### KIT CONTENTS:

Rear Bumper x1  
 (For use for vehicles without factory Hitch)  
 Driver Side Bumper Bracket x1  
 Pass Side Bumper Bracket x1

2" LED Light Kit x1

#### TOOLS NEEDED:

19mm Wrench or Socket  
 24mm Wrench or Socket

#### HARDWARE INCLUDED:

10mm Double Bolt Plate x2  
 10mm Flat Washers x4  
 10mm Lock Nuts x4  
 4mm x 15mm Screws x12  
 Clear Retainers x4  
 Sensor Mount Assembly x6  
 License Plate Insert x2  
 Cable Ties x10



#### Torque Specs:

Size	Grade 5	Grade 8	Size	Class 8.8	Class 10.9
5/16"	15 ft/lbs	20ft/lbs	6MM	5ft/lbs	9ft/lbs
3/8"	30 ft/lbs	35ft/lbs	8MM	18ft/lbs	23ft/lbs
7/16"	45 ft/lbs	60ft/lbs	10MM	32ft/lbs	45ft/lbs
1/2"	65 ft/lbs	90ft/lbs	12MM	55ft/lbs	75ft/lbs
9/16"	95 ft/lbs	130ft/lbs	14MM	85ft/lbs	120ft/lbs
5/8"	135ft/lbs	175ft/lbs	16MM	130ft/lbs	165ft/lbs
3/4"	185ft/lbs	280ft/lbs	18MM	170ft/lbs	240ft/lbs

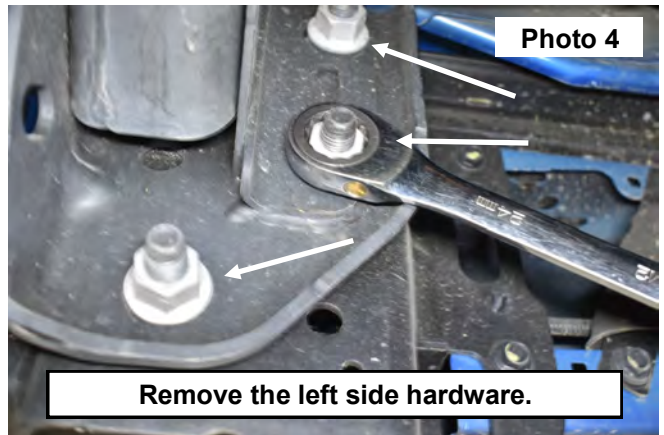


## INSTALLATION INSTRUCTIONS

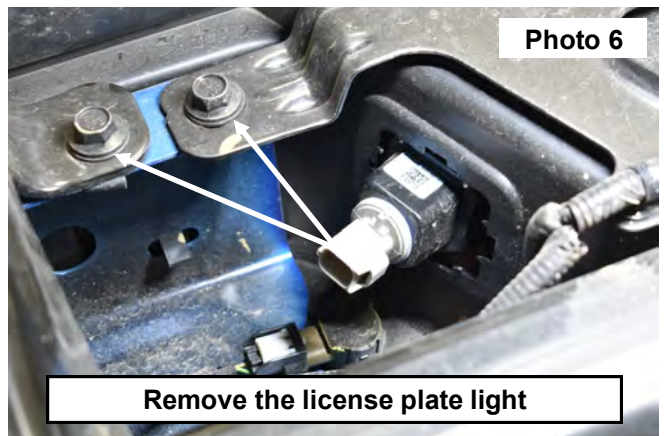
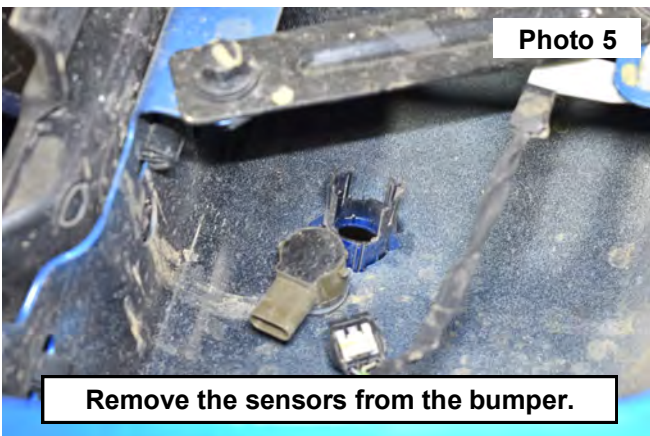
1. Locate the rear bumper harness and disconnect the large plug. **See Photo 1. Note: Vehicle shown with optional receiver hitch.**
2. Disconnect the trailer connections if equipped from the inside of the bumper around the license plate area. **See Photo 2.**



3. Support the bumper and remove the (3) nuts from the Driver and Passenger side. Then remove the bumper and hitch if equipped from the vehicle. **See Photos 3 and 4.**



4. Disconnect the sensors from the wiring harness. Then remove the sensors from the bumper mount. **See Photo 5.**
5. Disconnect the license plate light harness and remove the light mount from the bumper and the two bolts as shown that secures the hitch if equipped to the bumper skin. **See Photo 6.**





- Using a pry tool remove the wiring harness clips from the bumper. Then remove the wiring harness from the bumper. **See Photo 7.**
- Compress the locking tabs on the trailer light plug and remove from the bumper. **See Photo 8.**



- Install the trailer plug into the new RC bumper, locking the tabs onto the back side of the bumper. **See Photo 9.**
- Using the ignition key remove the spare tire lock from the bumper. **See Photo 10.**

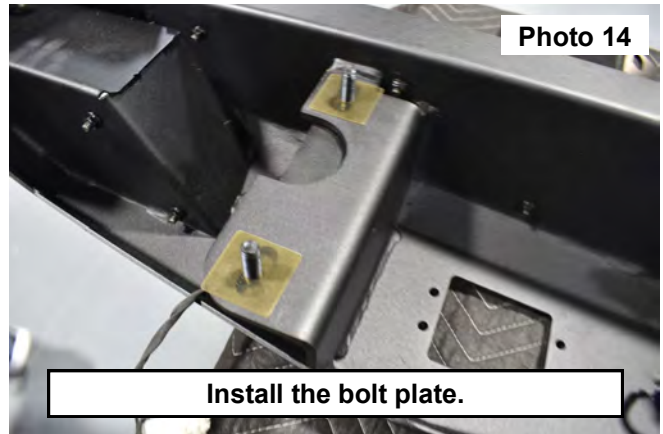


- Install the spare tire lock into the new RC bumper. **See Photo 11.**
- Install the license plate light into the new RC bumper. Seat the clips when installed. **See Photo 12.**



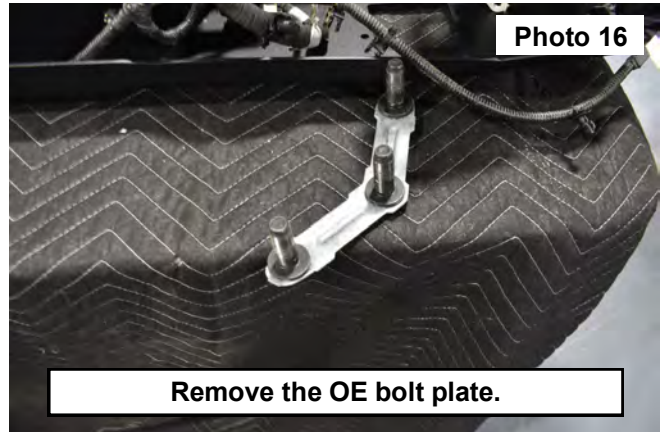
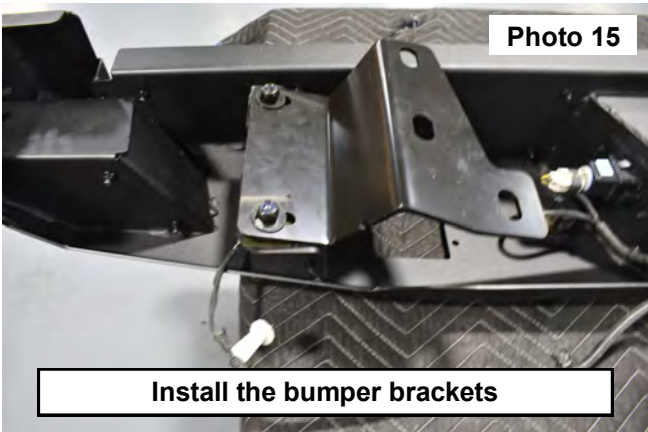
12. Locate the double bolt plate and the clear retainers. **See Photo 13.**

13. Install the double bolt plate into the bumper and secure using the clear retainers over the studs. **See Photo 14.**

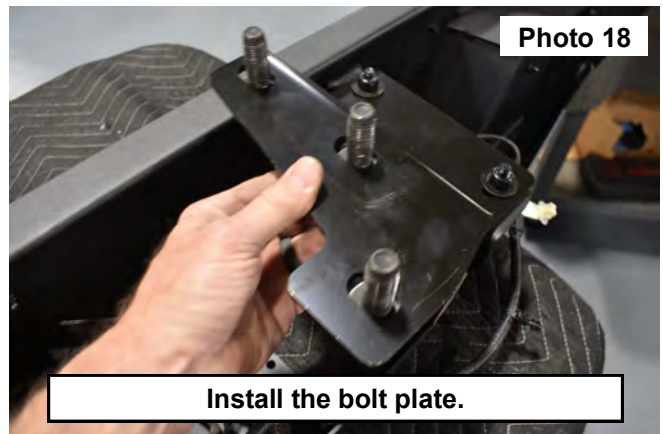


14. **If the vehicle is not factory equipped with a receiver hitch**, Place the bumper brackets for the driver and passenger side over the studs and secure by using (2) of the supplied 12mm flat washers and (2) nylock nuts. Hand tighten this hardware to where the bracket can be put into position. **See Photo 15. If the vehicle is factory equipped these brackets will not be used and the bumper will be secured to the hitch brackets.**

15. Remove the OE bolt plate from the bumper. **See Photo 16.**

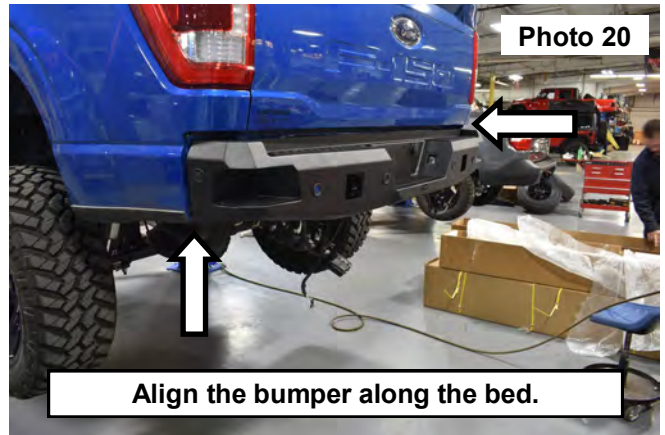
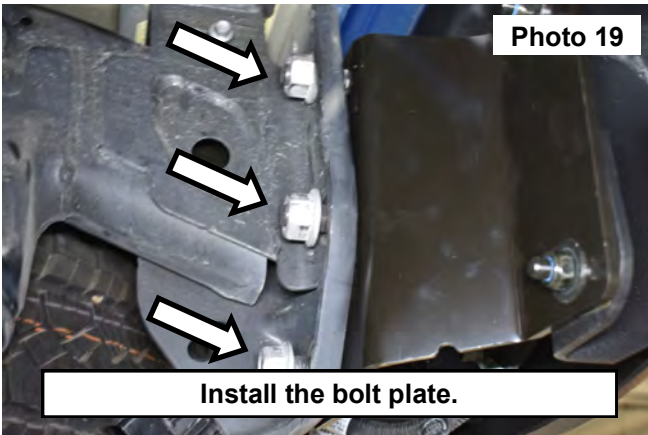


16. Support the bumper. Install the OE bolt plate into the bumper and install the bumper onto the vehicle and secure using the OE retained nuts. **See Photos 17 and 18. Pic shown for vehicles without factory receiver hitch. If factory hitch is present, the stock three bolt nut plate will install into the hitch bracket and secure to the bumper.**

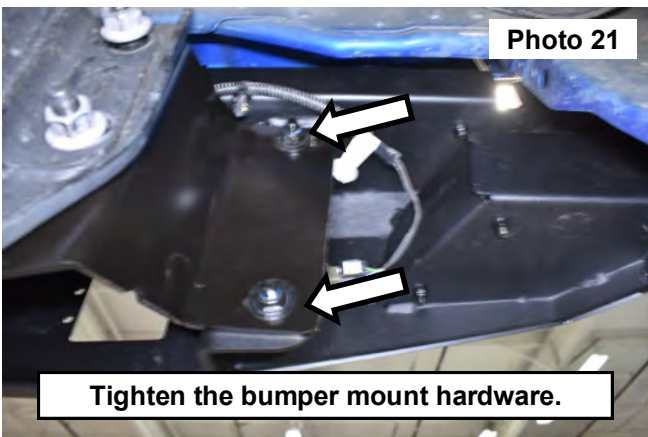




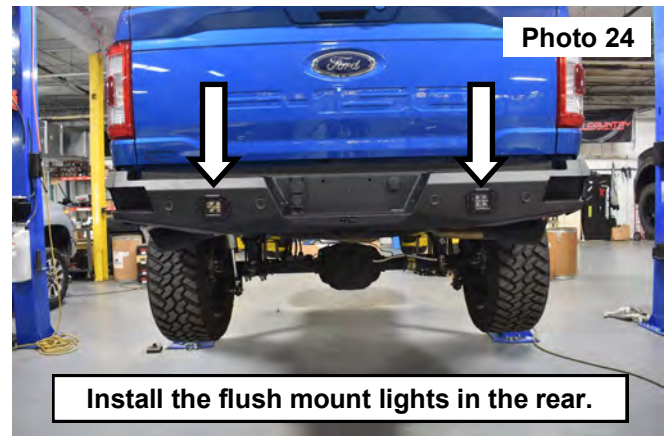
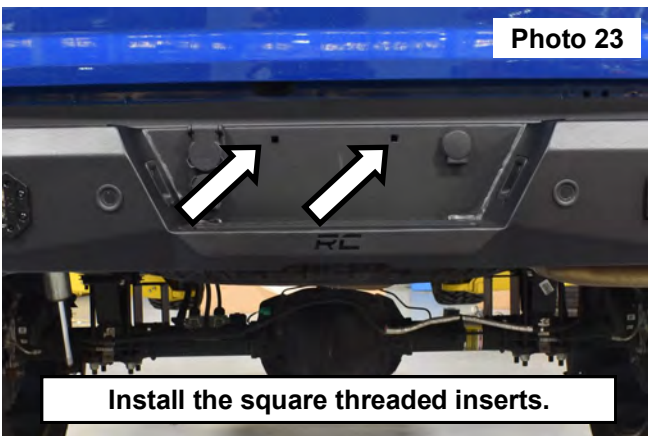
17. Insert the studs into the frame mount and secure using the OE nuts. **See Photo 19.**  
18. Align the bumper gap along the tail gate and center the bumper on each side of the vehicle. **See Photo 20.**



19. Tighten the frame hardware using a 24mm socket and the bracket hardware using a 19mm socket. **See Photo 21.**  
20. Connect the factory wiring harness to the sensors and license plate lights. **See Photo 22.**



21. Install the flush mount lights in the rear of the bumper using the corresponding instruction sheet and hardware. **See Photo 23.**  
22. Install the square threaded inserts into the bumper and mount the license plate. **See Photo 24.**



By purchasing any item sold by Rough Country, LLC, the buyer expressly warrants that he/she is in compliance with all applicable, State, and Local laws and regulations regarding the purchase, ownership, and use of the item. It shall be the buyers responsibility to comply with all Federal, State and Local laws governing the sales of any items listed, illustrated or sold. The buyer expressly agrees to indemnify and hold harmless Rough Country, LLC for all claims resulting directly or indirectly from the purchase, ownership, or use of the items.

