

ROUGH COUNTRY

SUSPENSION SYSTEMS®

A-C11412



WARNING: This product contains a chemical known to the State of California to cause Cancer and Reproductive Harm. For more information, go to www.P65Warnings.ca.gov.

2014-2018 Chevy 1500, 2015-2020 Chevy 1500/2500/3500 NON-DUALLY 6' & 8' Bed Length DEFENDER STYLE FLARES

PRIOR TO INSTALLATION

- A) Install the flares according to these written instructions with the hardware provided. **WARNING:** Failure to install according to these instructions will invalidate the warranty. This includes, but is not limited to, using alternative installation methods, hardware, or materials. **DO NOT USE:** Loctite, Superglue, or similar products on the hardware or the flares. *Install flares on cleaned vehicle surfaces.*
- B) **Fit:** Verify the fit of the flares to vehicle prior to installation (some filing, sanding, or cutting may be necessary to ensure proper fit).
- C) **Painting:** (Optional) if paint is desired it must be done prior to installing flares on vehicle. Clean outer surface with a good grade degreaser. **DO NOT USE LACQUER THINNER OR ENAMEL REDUCER AS A DEGREASER.** Wipe outer surface thoroughly with a tack rag prior to paint. Application of plastic adhesion promoter for ABS plastic as per your paint system manufacturer's recommendations is required. Paint flares using a high-quality enamel, or polyurethane automotive paint. If painting edge trim (not recommended), use a flex additive.
- D) **Performance:** Using larger tires may increase the area required to turn the vehicle. Some tire/rim combinations may require lowering bump stops and or installing steering stops to prevent tire from contacting flare.
- E) **Exhaust System:** Modifications may be necessary to maintain a minimum 4" clearance between flares and exhaust pipes. (Exhaust gases should not vent directly onto flares)
- F) **Metal Protection:** All exposed fasteners and bare metal should be treated with rust resistant paint **BEFORE** installing flares. Spray inner fender wells with undercoating **AFTER** flare attachments have been completed.
- G) **Decals:** Flares may interfere with existing decals on vehicle. If you wish, remove decals prior to installation of flares.
- H) **Care & Cleaning:** Fender flares are built to last; any detergent you use to wash your vehicle is sufficient to clean the flare. Do not use any harsh abrasive detergents.

TOOLS FOR EASY INSTALLATION:

- Soft Cloth or Alcohol Wipe
- 1/2" or 13mm Wrench
- T15 Torx Bit
- #2 Phillips Screwdriver
- Awl
- Grease Pencil
- Utility Knife
- Socket Wrench
- 7mm Socket

PLEASE READ: Dirt and debris can become lodged between the fender flares and the vehicle's fenders, causing scratching and paint wear from vibration. Manufacturer is not responsible for any damage, and the installation of our fender flares is done with the buyer's understanding that this scratching and paint wear may occur.

LIMITED LIFETIME WARRANTY AGAINST ANY MANUFACTURING DEFECTS: To claim warranty you must provide Proof of Purchase.



INCLUDED IN HARDWARE KIT:

1.



SS Pocket Torx Bolt
40 pcs

2.



SS Pocket Washer
40 pcs

3.



Pocket Nylock Nut
40 pcs

4.



T-45 Torx Bit
1 pc

5.



#8 Truss Head Screw
4 pcs

6.



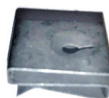
#8 Speed Clip
4 pcs

7.



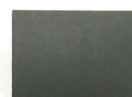
Short Screw
2 pcs

8.



"S" Clip
2 pcs

9.



Foam Tabs
12 pcs

10.



#10 Truss Head
Screw
14 pcs

11.



Long "U" Clip
10 pcs

12.



Short "U" Clip
4 pcs

13.



Wiper Style Edge
Trim
376 inches



IF YOU PURCHASED GLOSSY BLACK FLARES (CODE "RCGB"):



Prior to beginning installation process, peel the protective liner from each plastic piece included in the flare kit – all flares and inner pieces.

NOTE: It will be difficult to remove liner once edge trim and hardware are installed.

Once liner is removed, take care not to scratch flare surfaces. If flare needs to be cleaned, wipe gently with a clean soft cloth.



SECTION 1: FRONT FLARE EXTENSION PIECE INSTALLATION

- If your truck is a 2014-2015 1500, you will need to assemble the supplied extension pieces prior to installation.
- If your truck is a 2016-2018 1500 or a 2500 or 3500, please skip Steps 1 and 2.

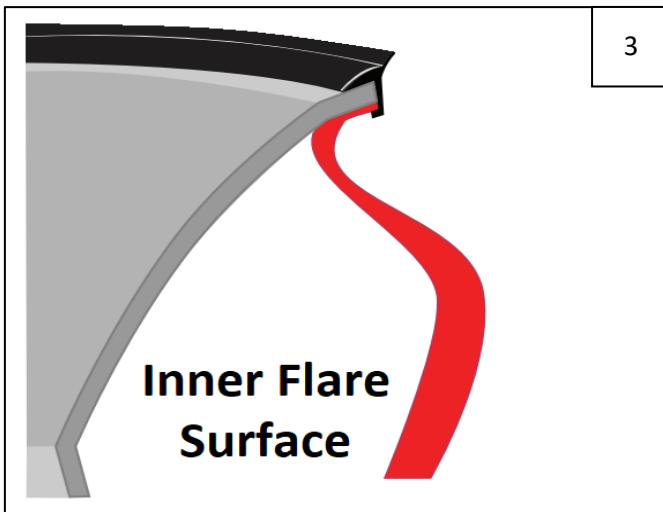


Install extension pieces to main front flares using two supplied #8 Speed Clips and #8 Truss Head Screws per side.



Before tightening, make sure that molded flare features are aligned. Tighten screws using #2 Phillips driver.

SECTION 2: EDGE TRIM INSTALLATION



Peel 2-3 inches of red vinyl backing away from supplied edge trim tape. Applying the adhesive side of the edge trim to the inner side of the flare, affix the edge trim to the top edge of the flare (the portion that comes in contact with the side of the vehicle).

Press edge trim into place along the top edge of the flare in one-foot increments, pulling red vinyl backing free as you continue to work your way around the top edge of the flare. Trim edge trim flush with ends of flare.



When you come to the jointure of the flare and extension piece, cut a notch in the back of the edge trim.

SECTION 3: POCKET HARDWARE INSTALLATION



5
Install a supplied SS Pocket Washer onto each SS Pocket Torx Bolt.



6
Insert each Bolt/Washer combination through pocket holes in flare, Bolt head and Washer on the outside.



7
Place a supplied Pocket Nylock Nut over the end of each bolt and tighten using a 1/2" wrench for the Nut and the supplied T-45 Torx Bit for the Bolt. Repeat for all pockets.

SECTION 4: FRONT FLARE INSTALLATION



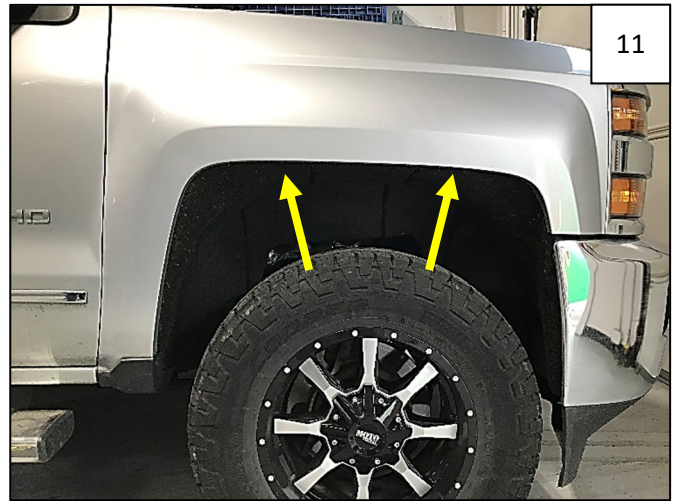
Using a T15 Torx bit, remove 2 factory fasteners from lower fender trim, indicated by arrows. Retain all screws for future use; some will be used.



Pry trim from vehicle by pulling down and toward you. There is a factory clip that may remain in vehicle – you do not need to remove it if it does not come out.



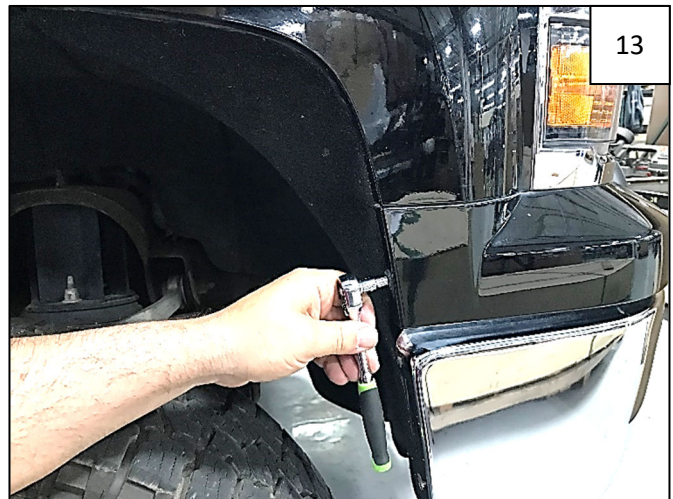
Reinstall inward-most factory screw removed in Step 8 as shown, to keep the wheel well liner in place (outermost hole will be used in the flare installation).



Using a T15 Torx bit, remove top 2 factory fasteners, indicated by arrows.



Using a T15 Torx bit, remove factory screw from hole that is third up from bottom rear of wheel well.



If your truck is a 1500, remove 7mm bolt from front of wheel well as shown using a socket.



14

Install 2 supplied Short "U" Clips onto supplied Inner Bracket over holes on either side of tape strip.



15

Install Inner Bracket using 2 T15 Torx screws retained in Step 11, making sure tape leader is accessible. NOTE: Driver Side Inner Bracket is marked as "LF" and Passenger Side is "RF."



16

Push Inner Bracket firmly against vehicle and tighten screws.



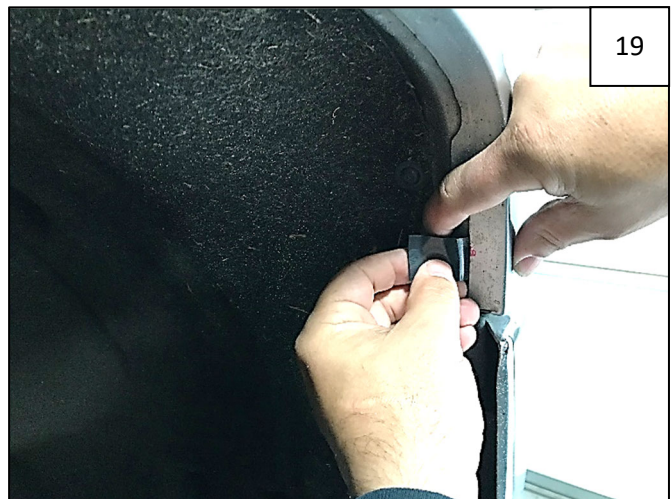
17

Pull tape leader from Inner Bracket at a 45-degree angle from part and apply pressure to ensure tape contact.



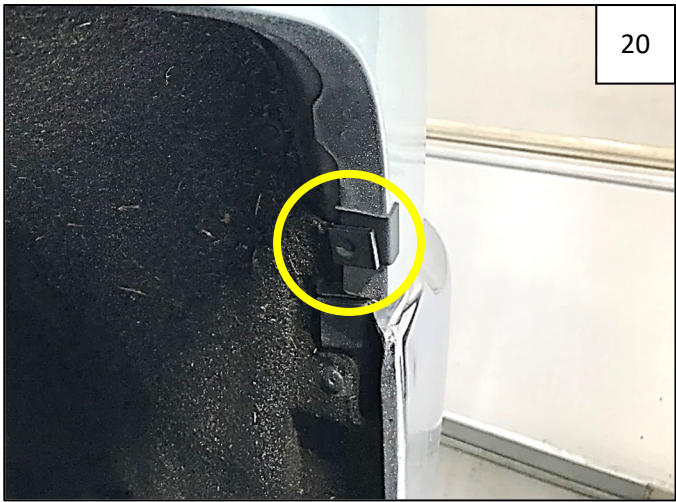
18

Holding flare firmly on fender, use grease pencil to mark 1 hole location, shown by arrow. NOTE: Inner lip of flare should cover Inner Bracket installed in Steps 15-17.



19

Remove flare from fender, and peel liner from supplied Foam Tab. Center foam tab over mark made in Step 18, folding over wheel well lip.



20

Install supplied "S" Clip over foam tab.



21

Holding flare firmly on fender, install 2 supplied #10 Truss Head Screws through topmost holes in flare and into Inner Bracket Clips. NOTE: Inner lip of flare should go over Inner Bracket installed in Steps 15-17. Do not tighten.



22

Install supplied Short Screw into "S" Clip installed in Step 20.



23

If your truck is a 2014-2015 1500, reinstall 7mm bolt removed in Step 13 through flare and into factory hole.



24

Reinstall 2 factory screws into holes at rear of flare, shown by arrows.



25

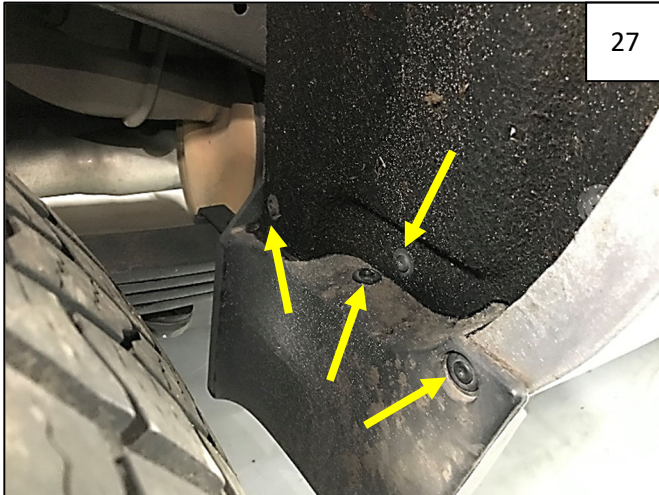
Apply pressure to flare towards vehicle and tighten all screws. Completed Front Flare Installation for 2015-2019 Chevy 2500, 3500.



26

Apply pressure to flare towards vehicle and tighten all screws. Completed Front Flare Installation for 2014-2015 Chevy 1500.

SECTION 5: REAR FLARE INSTALLATION



27

Using a T15 Torx bit, remove 4 factory screws from front lower fender trim. Retain all factory screws; some will be used. Remove fender trim.



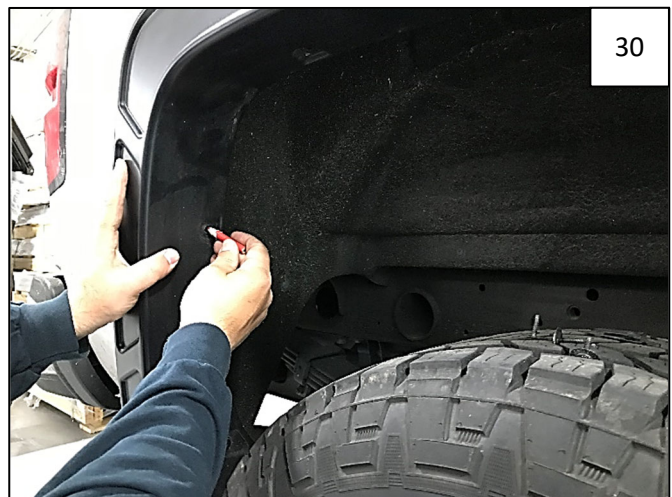
28

Reinstall 2 factory screw as shown by arrows, to keep the wheel well liner in place.



29

Remove 1 factory screw from rear fender trim as shown. Leave inner lowermost fastener in place.



30

Hold flare on fender, making sure inner structure rests along fender lip, and mark 5 hole locations with a grease pencil as shown.



31

Hole locations.



32

Remove flare from fender and peel liner from supplied Foam Tab. Center 5 foam tabs over marks made in Step 30, folding over wheel well lip.



33

Install 5 supplied Long "U" Clips over Foam Tabs as shown.



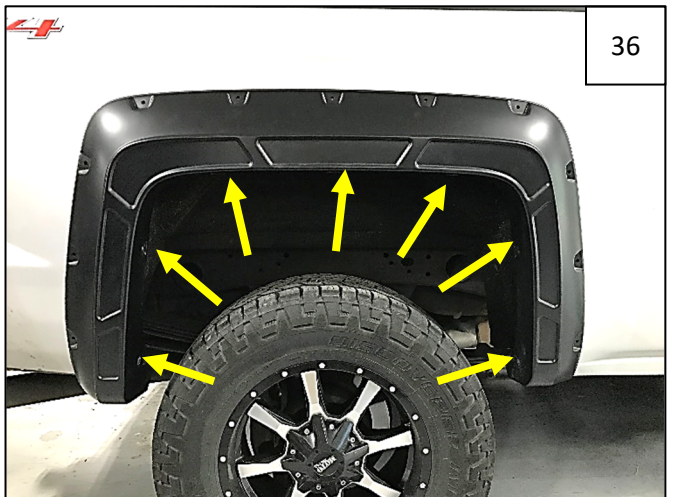
34

Hold flare on fender and install lowermost factory screws as shown by arrows to hold flare in place.



35

Install supplied #10 Truss Head Screws through holes in flare and into clips installed in Step 33.



36

Apply pressure to flare towards vehicle body at each fastening point and tighten all screws.



Completed Rear Flare installation.