

ROUGH COUNTRY

SUSPENSION SYSTEMS®



WARNING: This product contains a chemical known to the State of California to cause Cancer and Reproductive Harm. For more information, go to www.P65Warnings.ca.gov.

2020-2022 FORD BRONCO SPORT TRADITIONAL STYLE FLARES

PRIOR TO INSTALLATION

- A) Install the flares according to these written instructions with the hardware provided. **WARNING:** Failure to install according to these instructions will invalidate the warranty. This includes, but is not limited to, using alternative installation methods, hardware, or materials. **DO NOT USE:** Loctite, Superglue, or similar products on the hardware or the flares. Install flares on cleaned vehicle surfaces.
- B) **Fit:** Verify the fit of the flares to vehicle prior to installation (some filing, sanding, or cutting may be necessary to ensure proper fit).
- C) **Painting:** (Optional) if paint is desired it must be done prior to installing flares on vehicle. Clean outer surface with a good grade degreaser. **DO NOT USE LACQUER THINNER OR ENAMEL REDUCER AS A DEGREASER.** Wipe outer surface thoroughly with a tack rag prior to paint. Application of plastic adhesion promoter for ABS plastic as per your paint system manufacturer's recommendations is required. Paint flares using a high-quality enamel, or polyurethane automotive paint. If painting edge trim (not recommended), use a flex additive.
- D) **Performance:** Using larger tires may increase the area required to turn the vehicle. Some tire/rim combinations may require lowering bump stops and or installing steering stops to prevent tire from contacting flare.
- E) **Exhaust System:** Modifications may be necessary to maintain a minimum 4" clearance between flares and exhaust pipes. (Exhaust gases should not vent directly onto flares)
- F) **Metal Protection:** All exposed fasteners and bare metal should be treated with rust resistant paint **BEFORE** installing flares. Spray inner fender wells with undercoating **AFTER** flare attachments have been completed.
- G) **Decals:** Flares may interfere with existing decals on vehicle. If you wish, remove decals prior to installation of flares.
- H) **Care & Cleaning:** Fender flares are built to last; any detergent you use to wash your vehicle is sufficient to clean the flare. Do not use any harsh abrasive detergents.

TOOLS FOR EASY INSTALLATION:

- Soft Cloth or Alcohol Wipe
- Utility Knife
- #2 Phillips Driver
- Pry Tool
- Grease Pencil

PLEASE READ: Dirt and debris can become lodged between the fender flares and the vehicle's fenders, causing scratching and paint wear from vibration. Manufacturer is not responsible for any damage, and the installation of our fender flares is done with the buyer's understanding that this scratching and paint wear may occur.

LIMITED LIFETIME WARRANTY AGAINST ANY MANUFACTURING DEFECTS: To claim warranty you must provide Proof of Purchase.

INCLUDED IN HARDWARE KIT:

1.



Push-In Pocket Hardware, Brushed Metal
44 pcs

2.



Push-In Pocket Hardware, Black
44 pcs

3.



"S" Clip
10 pcs

4.



Short Screw
10 pcs

5.



Plastic Mounting Tab
10 pcs

6.



"U" Clip
6 pcs

7.



Foam Mounting Tab
6 pcs

8.



Long Screw
6 pcs

9.



Push-In Retainer
2 pcs

10.



Med. Wiper Style Edge Trim
227 inches



IF YOU PURCHASED GLOSSY BLACK FLARES (CODE "RCGB"):



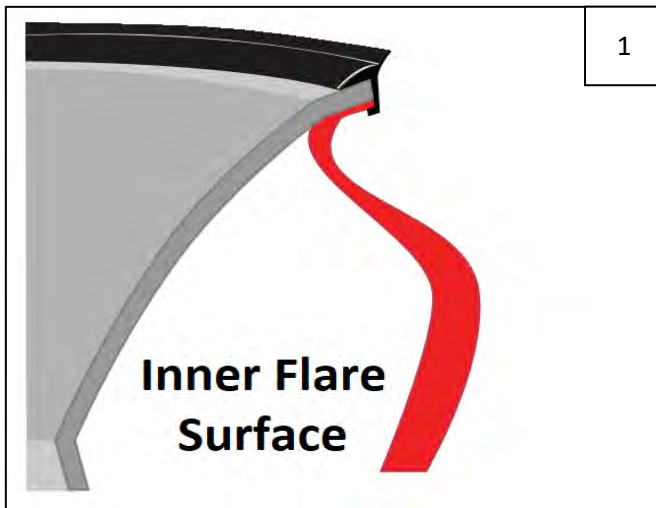
Prior to beginning installation process, peel the protective liner from each plastic piece included in the flare kit – all flares and inner pieces.

NOTE: It will be difficult to remove liner once edge trim and hardware are installed.

Once liner is removed, take care not to scratch flare surfaces. If flare needs to be cleaned, wipe gently with a clean soft cloth.



SECTION 1: EDGE TRIM INSTALLATION



Peel 2-3 inches of red vinyl backing away from supplied edge trim tape. Applying the adhesive side of the edge trim to the inner side of the flare, affix the edge trim to the top edge of the flare (the portion that comes in contact with the side of the vehicle).

Press edge trim into place along the top edge of the flare in one-foot increments, pulling red vinyl backing free as you continue to work your way around the top edge of the flare. Trim edge trim flush with ends of flare.

SECTION 2: PUSH-IN POCKET HARDWARE INSTALLATION



Peel liner from tape on Push-In Pocket Hardware (brushed metal or black as preferred). NOTE: There will be extra Push-In Pocket Hardware.



Insert Push-In Pocket Hardware into each flare pocket hole (on outer flare surface, 6 places each front flare, 6 places each rear). Push in to engage clip and tape adhesion.

SECTION 3: FRONT FLARE INSTALLATION



Hold Front Flare firmly on fender. With a grease pencil, mark 3 hole locations as shown in Step 5.



Hole locations.



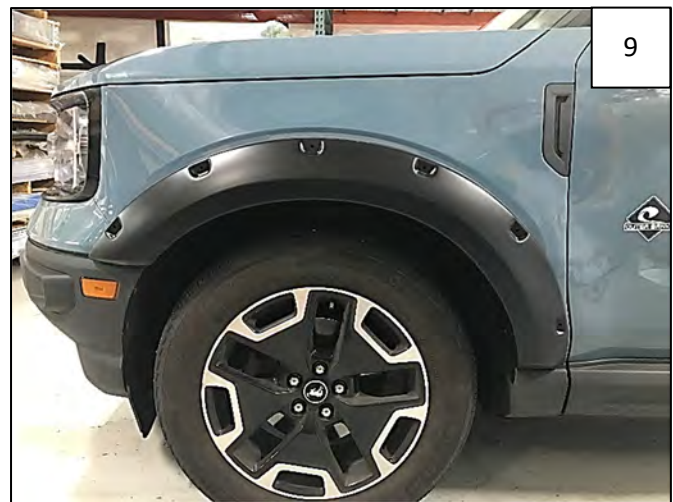
Peel liner from supplied Foam Mounting Tab. Center 3 Tabs over marks made in Step 4, wrapping around fender lip.



Slide a supplied "U" Clip over Foam Mounting Tab, centering hole in clip over mark made in Step 4.



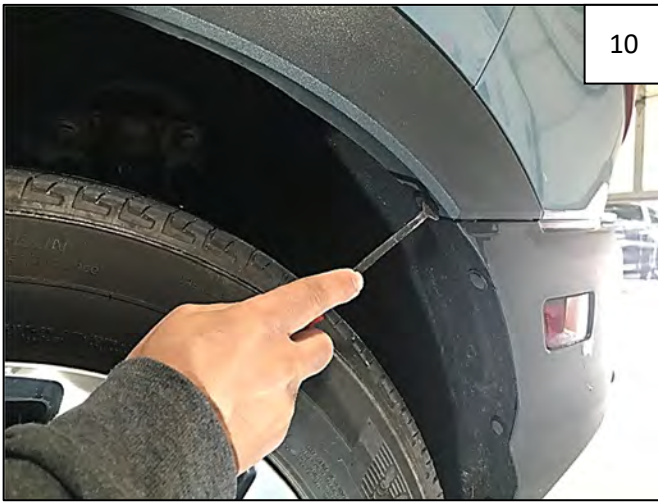
Hold Front Flare firmly on fender. Install a supplied Long Screw through holes in flare and into "U" Clips installed in Step 7.



Completed Front Flare Installation.

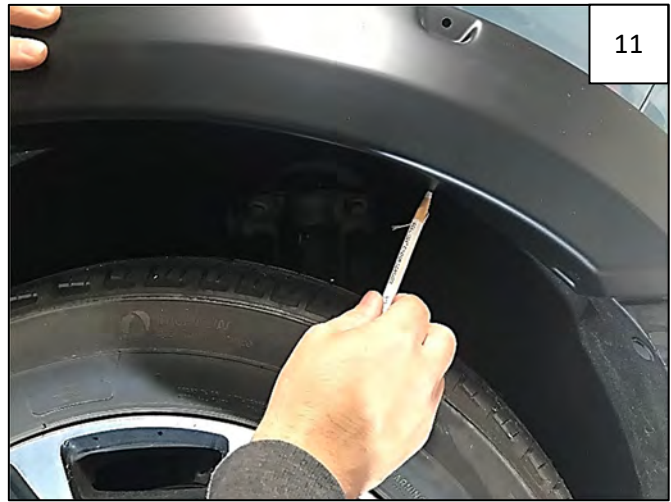


SECTION 4: REAR MAIN FLARE INSTALLATION



10

Remove plastic clip located at center rear of wheel well.



11

Hold Rear Main Flare firmly on fender. With a grease pencil, mark 2 hole locations shown in Step 12.



12

Hole locations.



13

Peel liner from supplied Plastic Mounting Tab. Center 2 Tabs over marks made in Step 11, wrapping around fender lip.



14

Install a supplied "S" Clip over each Plastic Mounting Tab, centering hole in clip over mark made in Step 11.



15

Hold Rear Main Flare firmly on fender. Install a supplied Short Screw through holes in flare and into "S" clips installed in Step 14.



16

Install a supplied Push-In Retainer through rearward lower hole in flare and into factory hole in fender.



17

Completed Rear Main Flare Installation.

SECTION 5: REAR DOOR PIECE INSTALLATION



18

Open door. Hold Rear Door Piece firmly on door, aligning edge of Door Piece with factory flare contour. With a grease pencil, mark 3 hole locations shown in Step 19.



19

Hole locations.



20

Peel liner from supplied Plastic Mounting Tab. Center 3 Tabs over marks made in Step 18, wrapping around edge of factory flare.



21

Install a supplied "S" Clip over each Plastic Mounting Tab, centering hole in clip over mark made in Step 18.



Hold Rear Door Piece firmly on fender. Install a supplied Short Screw through holes in flare and into "S" clips installed in Step 21, while ensuring that edge of Door Piece still aligns with contour in factory flare. When door is closed, Door Piece and Main Flare should be aligned with even gapping.



Completed Rear Door Piece Installation.