

ROUGH COUNTRY
SUSPENSION SYSTEMS®

921961000

CFMOTO Uforce 1000XL 20" Rear Under Bed Light Mount

Thank you for choosing Rough Country for all your vehicle needs.

Please read instructions before beginning installation. Check the kit hardware against the kit contents shown below. Be sure you have all needed parts and know where they go.

If question exist, please call us @1-800-222-7023. We will be happy to answer any questions concerning this product. Check all fasteners for proper torque. Check to ensure for adequate clearance between all components. Periodically check all hardware for tightness.

KIT CONTENTS:

20" Single Row LED Light Kit x1
Driver Side Light Bracket x1
Pass Side Light Bracket x1

TOOLS NEEDED:

10mm Socket and Wrench

HARDWARE INCLUDED:

Reuse Factory Hardware



INSTALLATION INSTRUCTIONS

1. Locate the heat shield and remove the two outermost bolts using a 10mm socket (retain hardware). **See Photo 1.**
2. Pass the bolts from step 1 through the slotted end of light bar brackets. Be sure to install the shorter bracket on the driver side and the longer bracket on the passenger side. Leave bolts loose at this time. **See Photo 2.**

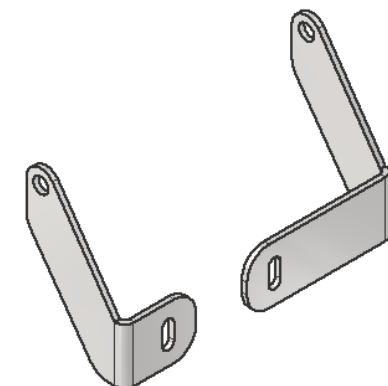
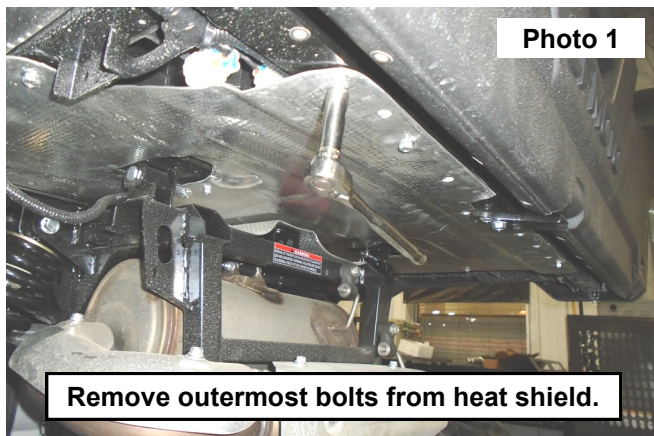


Photo 2

(L) Driver Side Bracket / (R) Passenger Side Bracket

3. Install light bar to brackets using hardware and Allen wrench supplied with the light bar. Remove light bar cover, adjust the angle of the light as desired and hand tighten all bolts. Replace cover to protect light when not in use.
4. Install the wiring harness using the corresponding instruction sheet supplied in the light bar kit.

POST INSTALLATION INSTRUCTIONS

1. Check all fasteners for proper torque. Check to ensure for adequate clearance between all rotating, mobile, fixed, and heated members. Verify clearance between exhaust and brake lines, fuel lines, fuel tank, floorboards, and wiring harness.
2. Check electrical wiring to ensure adequate clearance between all rotating, mobile, fixed, and heated members.



By purchasing any item sold by Rough Country, LLC, the buyer expressly warrants that he/she is in compliance with all applicable, State, and Local laws and regulations regarding the purchase, ownership, and use of the item. It shall be the buyers responsibility to comply with all Federal, State and Local laws governing the sales of any items listed, illustrated or sold. The buyer expressly agrees to indemnify and hold harmless Rough Country, LLC for all claims resulting directly or indirectly from the purchase, ownership, or use of the items.

