

## GMC 2019-23 1500 MUD FLAP DELETE

**Thank you for choosing Rough Country for all your vehicle needs.**

Please read instructions before beginning installation. Check the kit hardware against the kit contents shown below. Be sure you have all needed parts and know where they go.

If question exist, please call us @1-800-222-7023. We will be happy to answer any questions concerning this product.

Check all fasteners for proper torque. Check to ensure for adequate clearance between all components.

Periodically check all hardware for tightness.

### KIT CONTENTS:

- Dr. Front Cap (94034004)
- Pass. Front Cap (94034005)
- Dr. Rear - Front Cap (94034006)
- Pass. Rear - Front Cap (94034007)
- Dr. Rear - Rear Cap (94034008)
- Pass. Rear - Rear Cap (94034009)

### Hardware Included:

- 2 - #12 x 5/8" Screw

### TOOLS REQUIRED:

- T15 Torx  
Screwdriver
- Cleaning Spray
- Drill Motor
- 5/32" Drill

Part numbers are embossed on caps for identification.



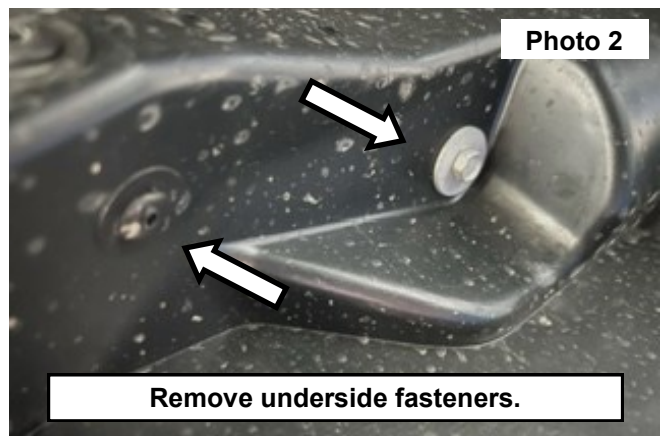
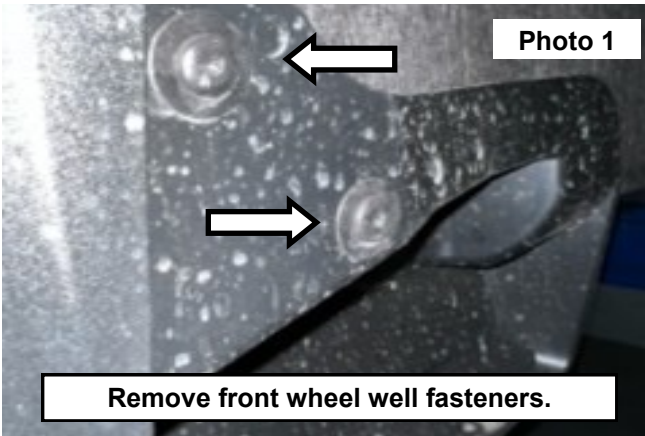
### Torque Specs:

Size	Grade 5	Grade 8	Size	Class 8.8	Class 10.9
5/16"	15 ft/lbs	20ft/lbs	6MM	5ft/lbs	9ft/lbs
3/8"	30 ft/lbs	35ft/lbs	8MM	18ft/lbs	23ft/lbs
7/16"	45 ft/lbs	60ft/lbs	10MM	32ft/lbs	45ft/lbs
1/2"	65 ft/lbs	90ft/lbs	12MM	55ft/lbs	75ft/lbs
9/16"	95 ft/lbs	130ft/lbs	14MM	85ft/lbs	120ft/lbs
5/8"	135ft/lbs	175ft/lbs	16MM	130ft/lbs	165ft/lbs
3/4"	185ft/lbs	280ft/lbs	18MM	170ft/lbs	240ft/lbs

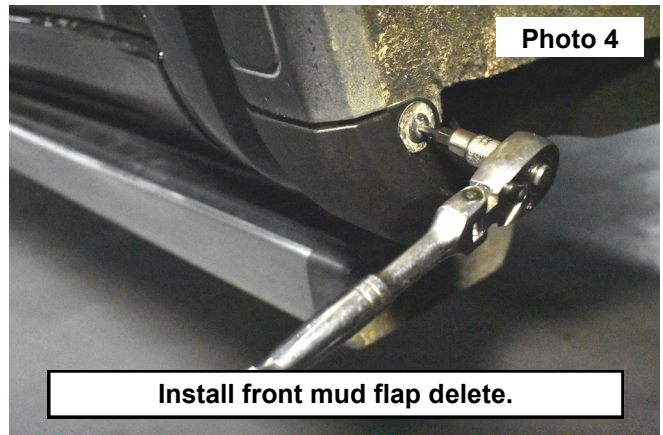
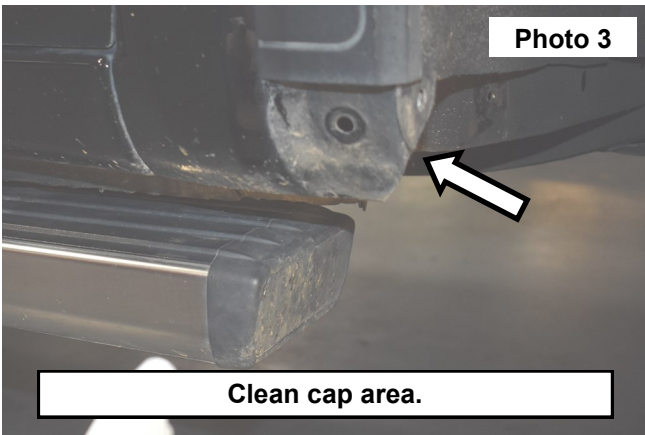


## INSTALLATION INSTRUCTIONS

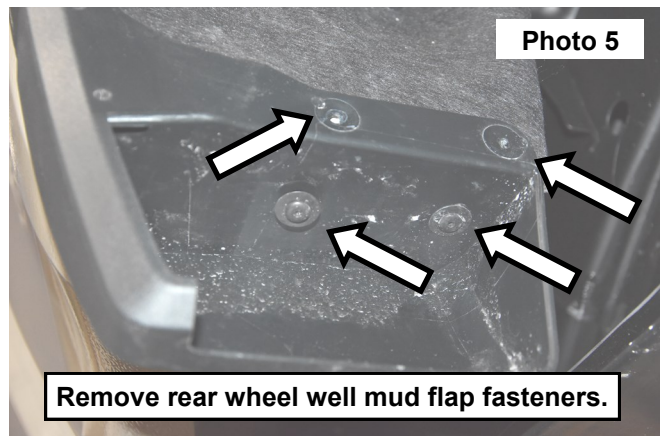
1. Remove the front passenger side factory mud flap using a T15 Torx. **NOTE:** Some models may have a 6mm bolt on the underside of the mud flap. Use a 10mm wrench to remove. Retain hardware for reuse. **See Photo 1 and Photo 2.**
2. Repeat for driver side.



3. Use preferred cleaning spray and wash rag to remove dirt and debris from the surface where the new cap will go. **See Photo 3.**
4. Peel the red adhesive tape backer off the passenger front cap (**94034005**). Press the cap into place and use one of the factory Torx screws to secure the outside edge of the cap. Tighten with T15 Torx. **See Photo 4.**

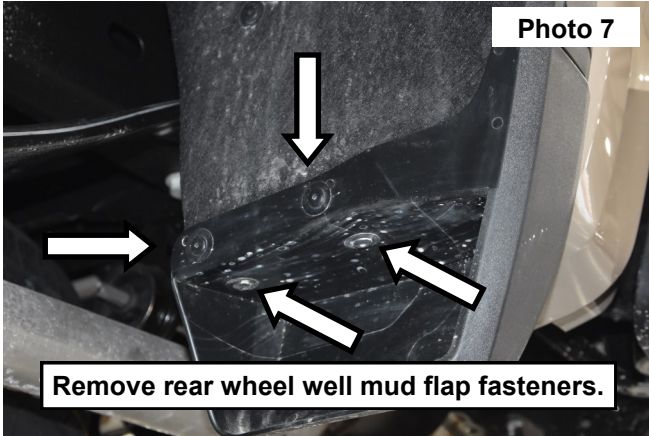


5. Use a 5/32" drill to make a hole where the hole in the front cap meets the frame of the vehicle.
6. Use a drill motor with a No. 2 Phillips bit or screwdriver to install the supplied #12 screw. **See Photo 5.**
7. Repeat Step 3 through Step 6 for driver side of vehicle (**94034004**).
8. Remove the factory Torx screws holding the front-rear wheel well mud flap with a T15 Torx. Retain hardware for reuse. **See Photo 6.**

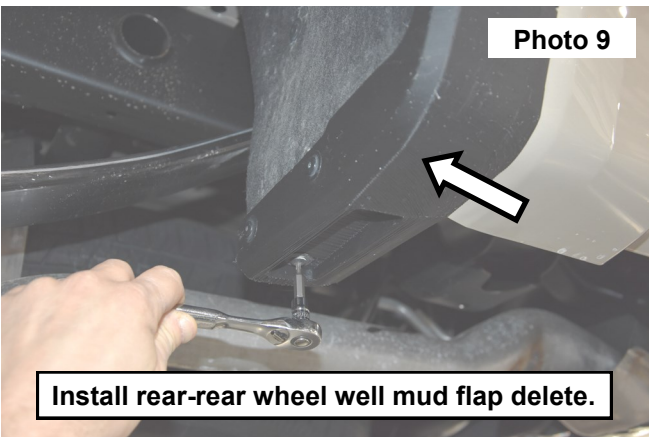


## INSTALLATION INSTRUCTIONS

9. Remove the factory Torx screws holding the rear-rear wheel well mud flap with a T15 Torx. Retain hardware for re-use. **See Photo 7.**
10. Use preferred cleaning spray and wash rag to remove dirt and debris from the surface where the new cap will go.
11. Peel the adhesive backer off and install the driver front-rear wheel well mud flap delete (**94034006**) using the factory hardware. Tighten with a T15 Torx. **See Photo 8.**



12. Peel the adhesive backer off and install the driver rear-rear wheel well mud flap delete (**94034008**) using the factory hardware. Tighten with a T15 Torx. **See Photo 9.**
13. Repeat Step 10 through Step 12 for the passenger side. Part **94034007** is the passenger front-rear wheel well mud flap delete and Part **94034009** is the passenger rear-rear wheel well mud flap delete.



By purchasing any item sold by Rough Country, LLC, the buyer expressly warrants that he/she is in compliance with all applicable, State, and Local laws and regulations regarding the purchase, ownership, and use of the item. It shall be the buyers responsibility to comply with all Federal, State and Local laws governing the sales of any items listed, illustrated or sold. The buyer expressly agrees to indemnify and hold harmless Rough Country, LLC for all claims resulting directly or indirectly from the purchase, ownership, or use of the items.

