

ROUGH COUNTRY

SUSPENSION SYSTEMS®



WARNING: This product contains a chemical known to the State of California to cause Cancer and Reproductive Harm. For more information, go to www.P65Warnings.ca.gov.

2023 CHEVY COLORADO 2WD/4WD TRADITIONAL STYLE FLARES

PRIOR TO INSTALLATION

- A) Install the flares according to these written instructions with the hardware provided. **WARNING:** Failure to install according to these instructions will invalidate the warranty. This includes, but is not limited to, using alternative installation methods, hardware, or materials. **DO NOT USE:** Loctite, Superglue, or similar products on the hardware or the flares. *Install flares on cleaned vehicle surfaces.*
- B) **Fit:** Verify the fit of the flares to vehicle prior to installation (some filing, sanding, or cutting may be necessary to ensure proper fit).
- C) **Painting:** (Optional) if paint is desired it must be done prior to installing flares on vehicle. Clean outer surface with a good grade degreaser. **DO NOT USE LACQUER THINNER OR ENAMEL REDUCER AS A DEGREASER.** Wipe outer surface thoroughly with a tack rag prior to paint. Application of plastic adhesion promoter for ABS plastic as per your paint system manufacturer's recommendations is required. Paint flares using a high-quality enamel, or polyurethane automotive paint. If painting edge trim (not recommended), use a flex additive.
- D) **Performance:** Using larger tires may increase the area required to turn the vehicle. Some tire/rim combinations may require lowering bump stops and or installing steering stops to prevent tire from contacting flare.
- E) **Exhaust System:** Modifications may be necessary to maintain a minimum 4" clearance between flares and exhaust pipes. (Exhaust gases should not vent directly onto flares)
- F) **Metal Protection:** All exposed fasteners and bare metal should be treated with rust resistant paint **BEFORE** installing flares. Spray inner fender wells with undercoating **AFTER** flare attachments have been completed.
- G) **Decals:** Flares may interfere with existing decals on vehicle. If you wish, remove decals prior to installation of flares.
- H) **Care & Cleaning:** Fender flares are built to last; any detergent you use to wash your vehicle is sufficient to clean the flare. Do not use any harsh abrasive detergents.

TOOLS FOR EASY INSTALLATION:

- Soft Cloth or Alcohol Wipe
- Socket Wrench
- T-15 Torx Bit
- Pry Tool
- #2 Philips Screwdriver
- Grease Pencil
- Awl
- Pliers
- Utility Knife

PLEASE READ: Dirt and debris can become lodged between the fender flares and the vehicle's fenders, causing scratching and paint wear from vibration. Manufacturer is not responsible for any damage, and the installation of our fender flares is done with the buyer's understanding that this scratching and paint wear may occur.

LIMITED LIFETIME WARRANTY AGAINST ANY MANUFACTURING DEFECTS: To claim warranty you must provide Proof of Purchase.

INCLUDED IN HARDWARE KIT:

1.



Push-In Pocket Hardware, Brushed Metal
44 pcs

2.



Push-In Pocket Hardware, Black
44 pcs

3.



Small "U" Clip
4 pcs

4.



Large "U" Clip Screw
10 pcs

5.



Mounting Tab
10 pcs

6.



#10 Truss Head Screw
14 pcs

6.



Plastic Xmas Tree
2 pcs

7.



Plastic Push-In Retainer
2 pcs

8.



Wiper Style Edge Trim
320 inches



IF YOU PURCHASED GLOSSY BLACK FLARES (CODE "RCGB"):



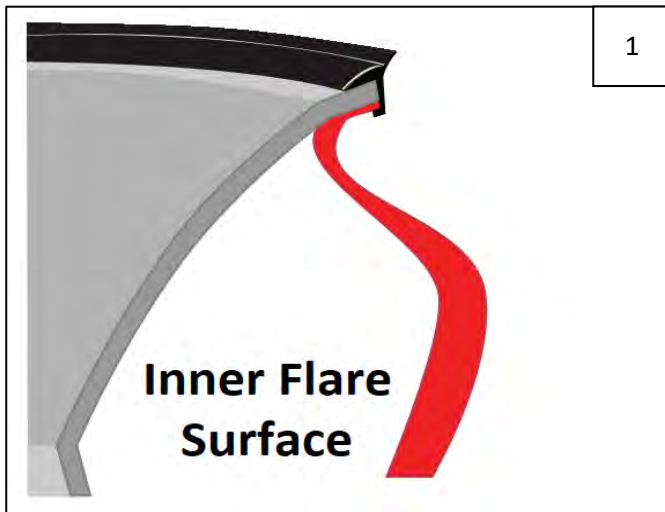
Prior to beginning installation process, peel the protective liner from each plastic piece included in the flare kit – all flares and inner pieces.

NOTE: It will be difficult to remove liner once edge trim and hardware are installed.

Once liner is removed, take care not to scratch flare surfaces. If flare needs to be cleaned, wipe gently with a clean soft cloth.



SECTION 1: EDGE TRIM INSTALLATION



Peel 2-3 inches of red vinyl backing away from supplied edge trim tape. Applying the adhesive side of the edge trim to the inner side of the flare, affix the edge trim to the top edge of the flare (the portion that comes in contact with the side of the vehicle).

Press edge trim into place along the top edge of the flare in one-foot increments, pulling red vinyl backing free as you continue to work your way around the top edge of the flare. Trim edge trim flush with ends of flare.

SECTION 2: PUSH-IN POCKET HARDWARE INSTALLATION



Peel liner from tape on Push-In Pocket Hardware (brushed metal or black as preferred). NOTE: There will be extra Push-In Pocket Hardware.



Insert Push-In Pocket Hardware into each flare pocket hole (on outer flare surface, 8 places each front flare, 9 places each rear). Push in to engage clip and tape adhesion.

SECTION 3: FRONT FLARE INSTALLATION



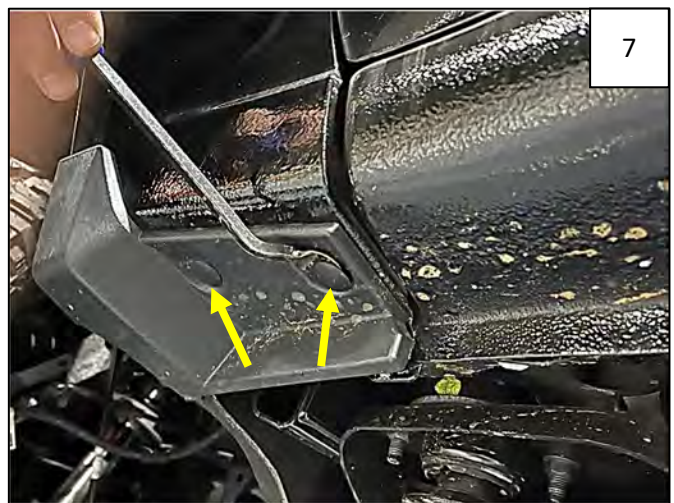
Using a T-15 Torx bit, remove 4 factory screws. Retain all screws for reinstallation.



If your vehicle has factory mud flaps, remove factory screws from inside of wheel well securing mud flap (some may be underneath). Remove mud flap.



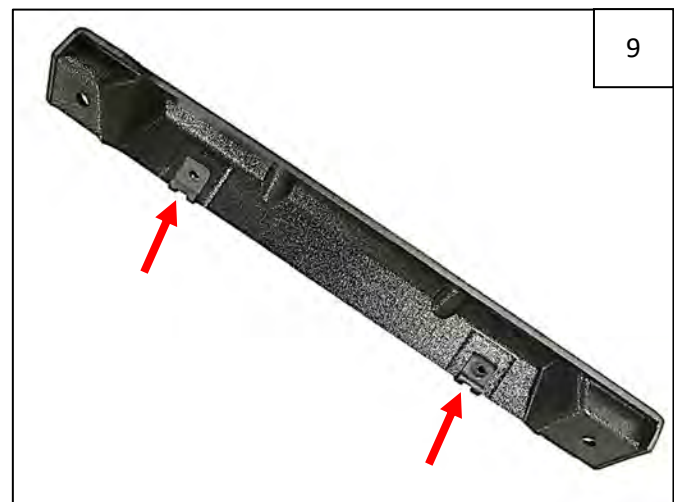
If your vehicle does NOT have factory mud flaps, remove 2 screws from mud guard as shown.



Using pry tool, remove 2 plastic fasteners from underside of mud guard. Remove mud guard – there is a plastic clip inside that will disengage.



Install 2 supplied Short "U" Clips over holes in Inner Piece. Driver Side Inner Piece is marked "LF"; Passenger Side is marked "RF."



Inner Piece hole locations (driver side shown). Flat side of clip should face down when installed in wheel well.



10

Install Long Inner Piece onto top underside lip of fender using 2 factory screws through holes that do not have clips.



11

Hold flare firmly on fender. Using a grease pencil, mark 1 hole location in area shown in Step 12.



12

Hole location.



13

Peel PSA liner from supplied Mounting Tab. Center Mounting Tab on fender over mark made in Steps 11-12, folding over fender lip.



14

Slide a supplied Long "U" Clip over Mounting Tab.



15

Hold flare on fender and start a supplied #10 Truss Head Screw through hole and into clip installed in Step 14. NOTE: Use an awl to locate and center hole in clip if needed.



16

Install 1 factory screw through lowermost rear hole in flare and into factory hole in fender.



17

Install 2 supplied #10 Truss Head Screws through uppermost holes in flare and into clips installed in the Inner Pieces. NOTE: Use an awl to locate and center holes in clips if needed.



18

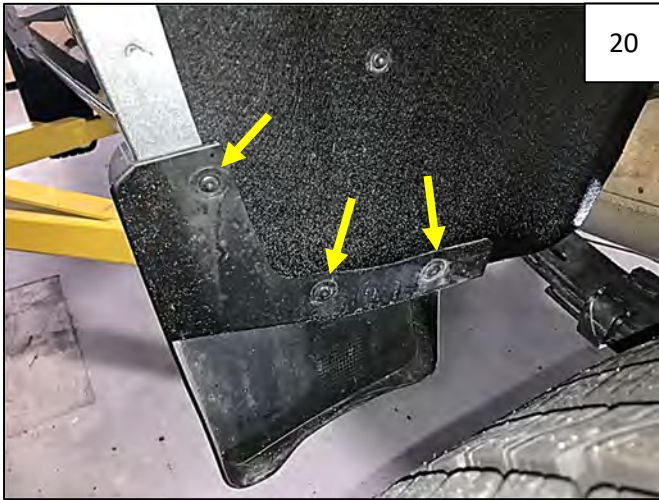
Install 2 factory screws through forwardmost holes in flare and into factory holes in fender.



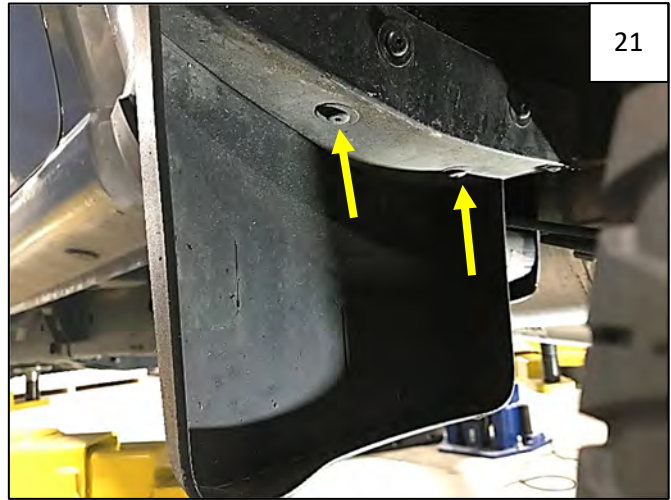
19

Apply pressure to outward face of the flare towards the center of the vehicle and tighten all screws.

SECTION 4: REAR FLARE INSTALLATION



Using a T-15 Torx Bit, Remove 3 factory screws from front mud guard. Retain all screws for reinstallation.



Remove 2 factory screws from underside of front mud guard.



If your vehicle has factory mud flaps, remove factory screws from inside of wheel well securing mud flap (some may be underneath). Remove mud flap.



If your vehicle does NOT have factory mud flaps, remove 2 screws from rear trim piece as shown.



Using a pry tool, remove 1 plastic retainer from underside of rear trim piece. There are 2 inner clips to disengage by pinching. Discard trim piece.



Using pliers, disengage white clip at underside of front mud guard. Remove front mud guard.



26

Use a soft cloth or an alcohol wipe to clean rear trim area at rear of wheel well.



27

Hold supplied Rear Rocker Trim Piece firmly on fender, keeping red tape leader free. Install a supplied Plastic Push-In Retainer through upper in part and into fender.



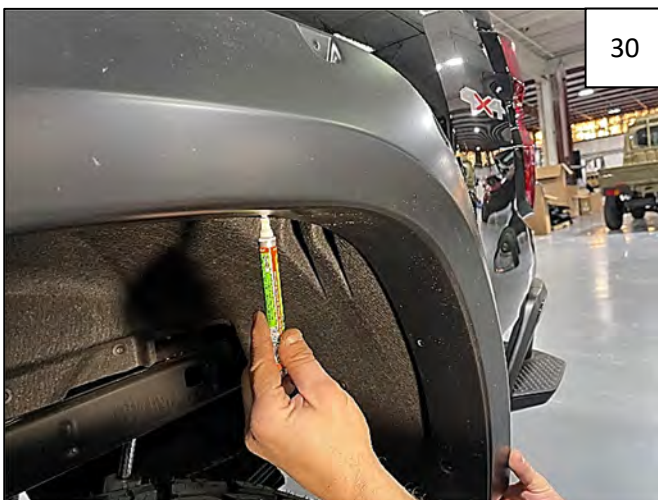
28

Insert a supplied Plastic Xmas Tree through hole in underside of part and into fender.



29

Carefully pull red tape leader at a 45 degree angle away from the part to release from the tape, pressing against part as you go. Press part against vehicle at areas of tape for 30 seconds to ensure full adhesion. Tape cures after 24 hours at 65 degrees.



30

Hold flare firmly on fender. Using a grease pencil, mark 4 hole locations in area shown in Step 32.



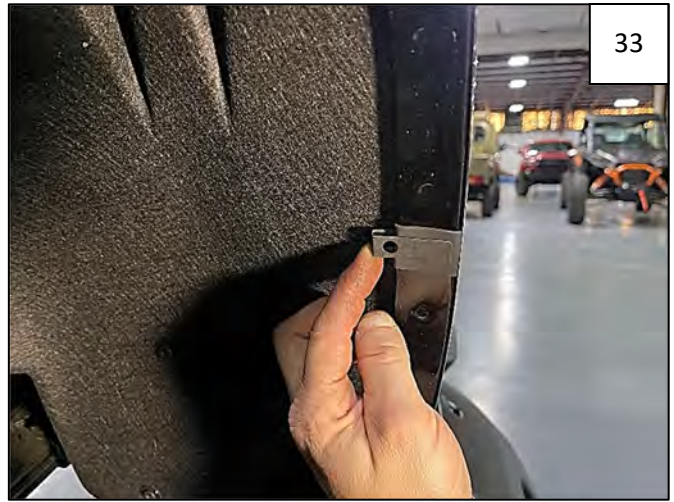
31

Hole locations.



32

Center a supplied Mounting Tab over each mark made in Steps 30-31.



33

Slide a supplied Long "U" Clip over each Mounting Tab installed in Step 32.



34

Hold flare firmly on fender. Start 4 factory screws in holes indicated by arrows.



35

Start 4 supplied #10 Truss Head Screws through holes in flare and into clips installed in Step 33. NOTE: Use an awl to locate and center holes in clips if needed.



36

Apply pressure to outward face of the flare towards the center of the vehicle and tighten all screws.