

Installation Guide for 2009-18 Ram Truck 1500 | 10-18 Ram 2500/3500 LUXX-Series LED Tail lights

ALPHAREX specializes in designing and producing superior and uniquely stylish aftermarket automotive performance lighting with unrivalled innovative technology. This installation guide takes you through the step-by-step process of installing your new **ALPHAREX TAIL LIGHTS** for your 2009-18 Ram Truck 1500 | 10-18 Ram 2500/3500 **DO NOT USE DIELECTRIC GREASE!**



Table of Contents



PART I REMOVE TAIL LIGHTS

- **INSTALLATION TOOLS**
- **STEP 1.** Unscrew tail lights screws
- **STEP 2.** Unplug sockets and remove the light bulbs

PART II INSTALL ALPHAREX TAIL LIGHTS

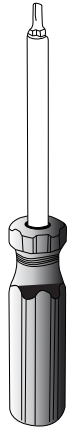
- **STEP 1.** Plug the light sockets
- **STEP 2.** Install ALPHAREX tail lights
- **STEP 3.** Complete Installation

Disclaimer: This installation article is a tutorial guide. By reading this article, you agree it is for reference only and AlphaRex USA and its distributors make no guarantee on the finished results. Under no circumstances whatsoever shall AlphaRex USA nor its distributors be liable for any damage, misuse or personal injuries. If you do not fully understand the installation procedure, it is highly recommended that you seek help from professional mechanics to do the installation.

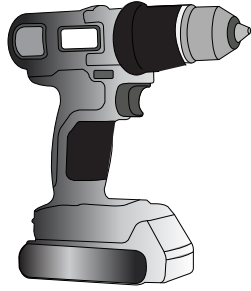
PART I REMOVE TAIL LIGHTS

INSTALLATION TOOLS

PREPARE THESE TOOLS FOR INSTALLATION



Torx
Screwdriver



Power Tool



1/4 Ratchet



1/4 Extension

T25
Star Torx



Socket

NOTE: Whenever using a power tool, please make sure do not overtighten the screws.

Whenever working on your vehicle, always make sure your vehicle is OFF and parked.

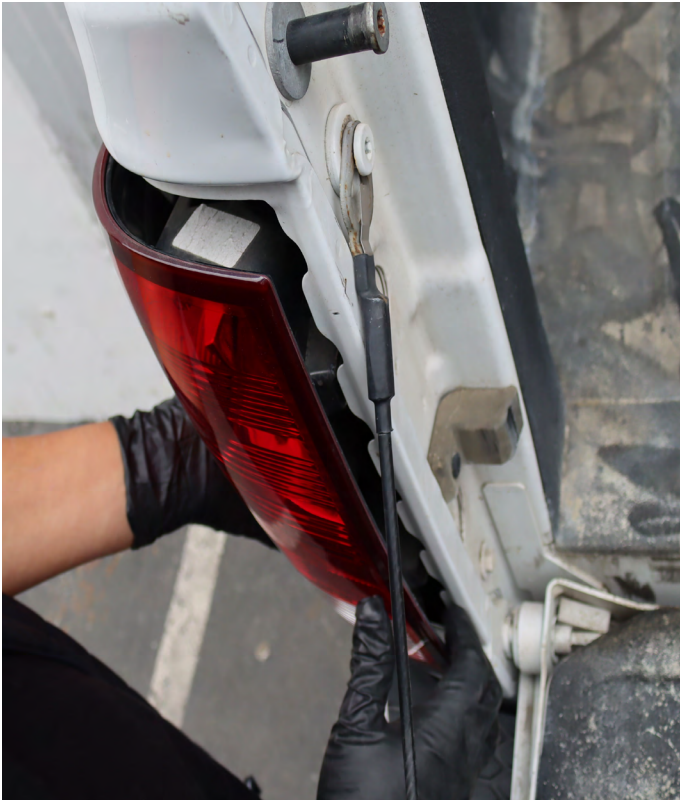


STEP 1. UNSCREW TAIL LIGHTS SCREWS

Utilize a T25 Bit screwdriver or a power wrench to remove the top and bottom screws. Set them aside for later re-installation.



After removing the screws, carefully pull the tail light outward at a slight angle.



STEP 2. UNPLUG THE SOCKETS AND REMOVE THE LIGHT BULBS

Disconnect the light bulb sockets and remove the tail light assembly.





Subsequently, take out the light bulbs from the sockets. Repeat the same steps for the other side of the tail light.



PART II INSTALL ALPHAREX TAIL LIGHTS



STEP 1. PLUG THE LIGHT SOCKETS

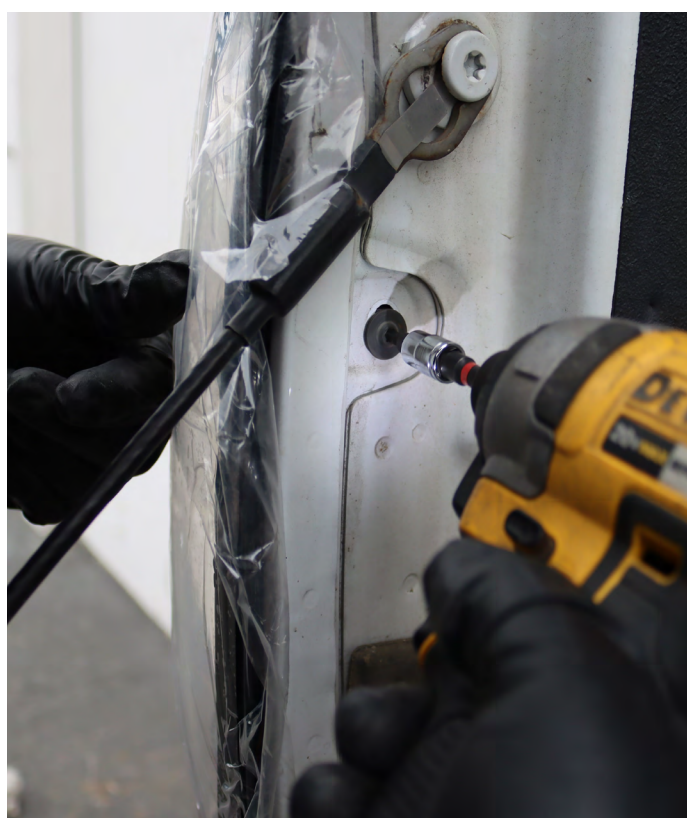
Connect the light sockets directly to the new ALPHAREX tail lights.

DO NOT USE DIELECTRIC GREASE!



STEP 2. INTALL ALPHAREX TAIL LIGHTS

Reverse the removal process to install the new tail lights into the vehicle. Securely tighten the 2 X T25 bit screws for each side of the tail light. NOTE: When using a power wrench, exercise caution not to overtighten the screws.



STEP 3. COMPLETE INSTALLATION

Congratulations! You have completed the installation for ALPHAREX 09-18 Ram Truck 1500 | 10-18 Ram 2500/3500 LED TAIL LIGHTS.

