



Installation Guide for 2020-24 Tesla Model Y Headlights

ALPHAREX specializes in designing and producing superior and uniquely stylish aftermarket automotive performance lighting with unrivalled innovative technology. This installation guide takes you through the step-by-step process of installing your new **ALPHAREX HEADLIGHTS** for your 2020-24 Tesla Model Y

DO NOT USE DIELECTRIC GREASE!



Table of Contents



PART I REMOVE HEADLIGHTS

- **INSTALLATION TOOLS**
- **STEP 1.** Front Trunk Storage Tray Removal
- **STEP 2.** Remove the filter assembly
- **STEP 3.** Remove the front bumper
- **STEP 4.** Remove the headlight bolts
- **STEP 5.** Remove the headlights

PART II INSTALL HEADLIGHTS

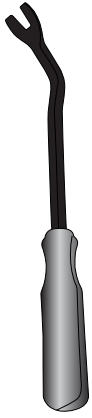
- **STEP 1.** Install the headlights
- **STEP 2.** Test the headlight functions
- **STEP 3.** Adjust headlight level
- **STEP 4.** Complete installation

Disclaimer: This installation article is a tutorial guide. By reading this article, you agree it is for reference only and AlphaRex USA and its distributors make no guarantee on the finished results. Under no circumstances whatsoever shall AlphaRex USA nor its distributors be liable for any damage, misuse or personal injuries. If you do not fully understand the installation procedure, it is highly recommended that you seek help from professional mechanics to do the installation.

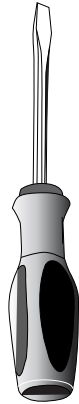
PART I REMOVE HEADLIGHTS

INSTALLATION TOOLS

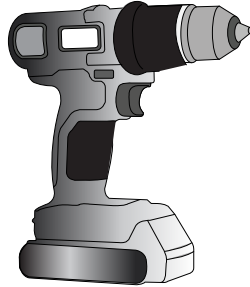
PREPARE THESE TOOLS FOR INSTALLATION



Metal
Panel
Popper



Flat
Screwdriver



Power Tool



1/4 Ratchet



1/4 Extension

10mm



NOTE: Whenever using a power tool, please make sure do not overtighten the bolts.

STEP 1. FRONT TRUNK STORAGE TRAY REMOVAL

Whenever working on your vehicle, always make sure your vehicle is OFF and raise the front hood.

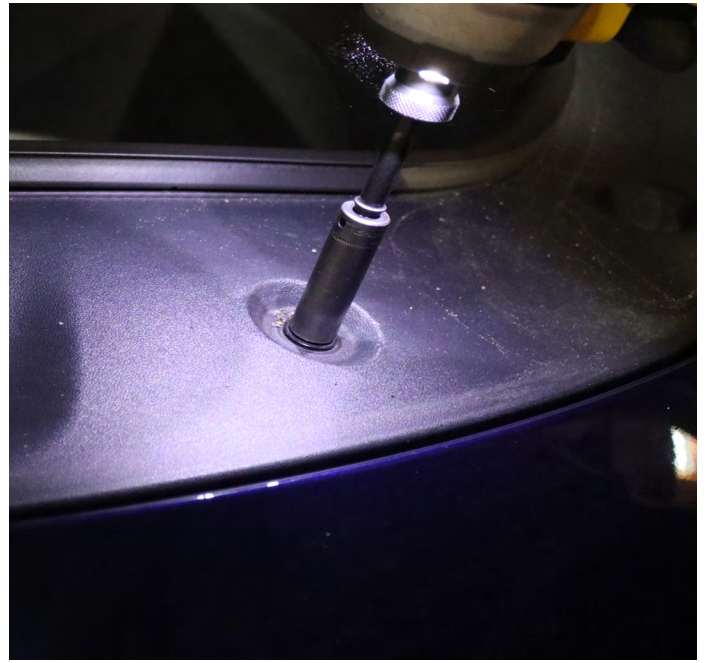


From the side, carefully lift the vent cover upward and proceed to remove it.

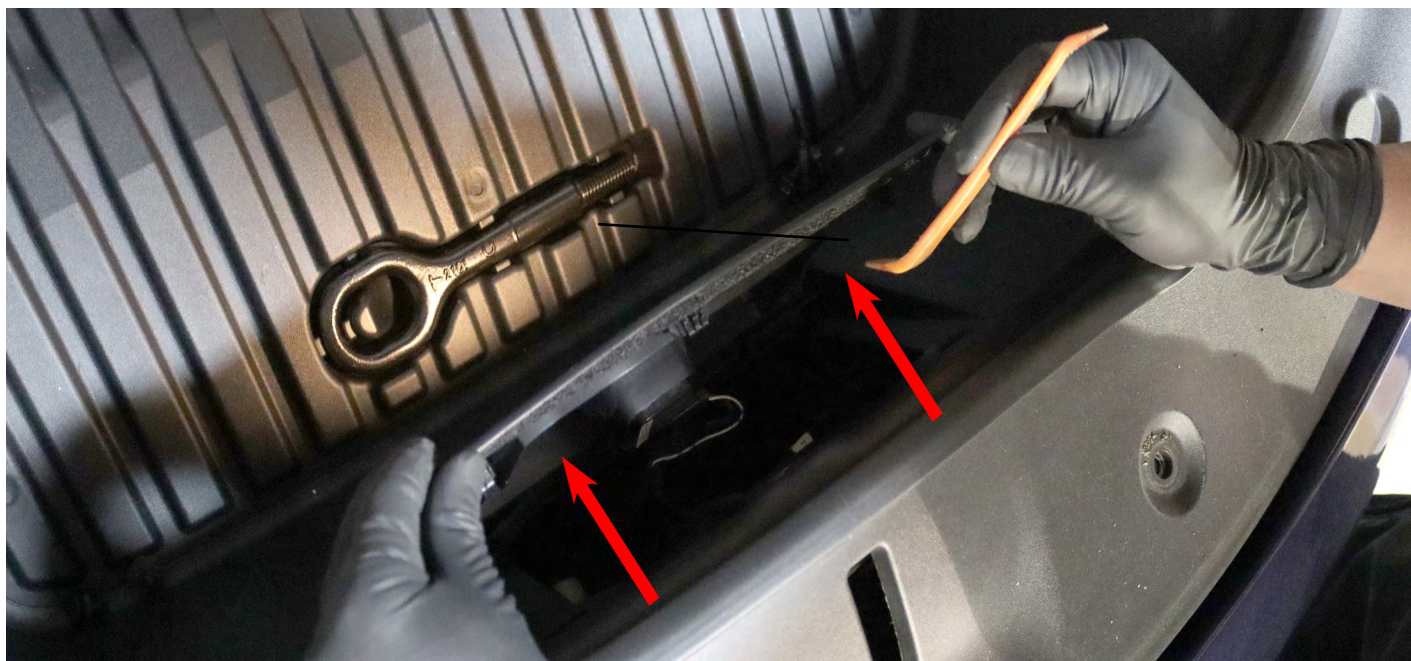


Detach the push-in pin and loosen the four 10mm bolts to facilitate removal.

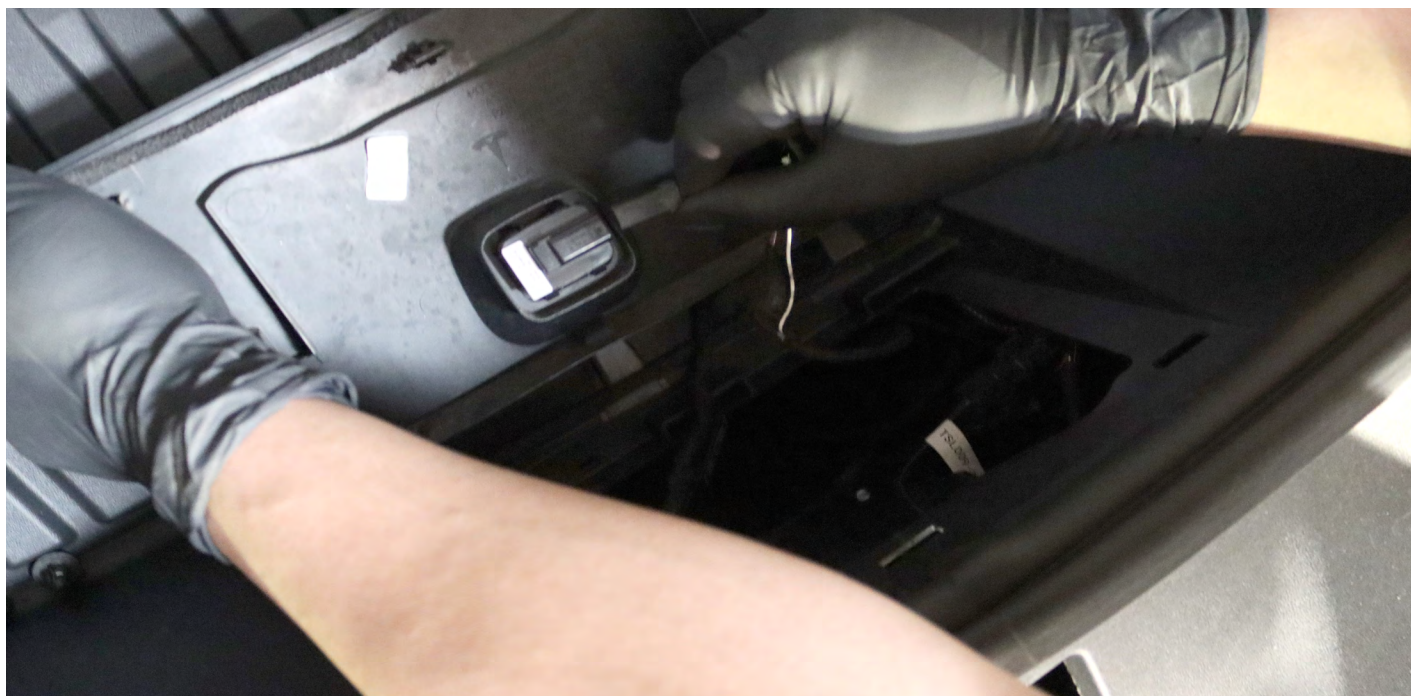




Utilize a panel popper tool to safely detach the plastic cover from the trunk storage compartment.

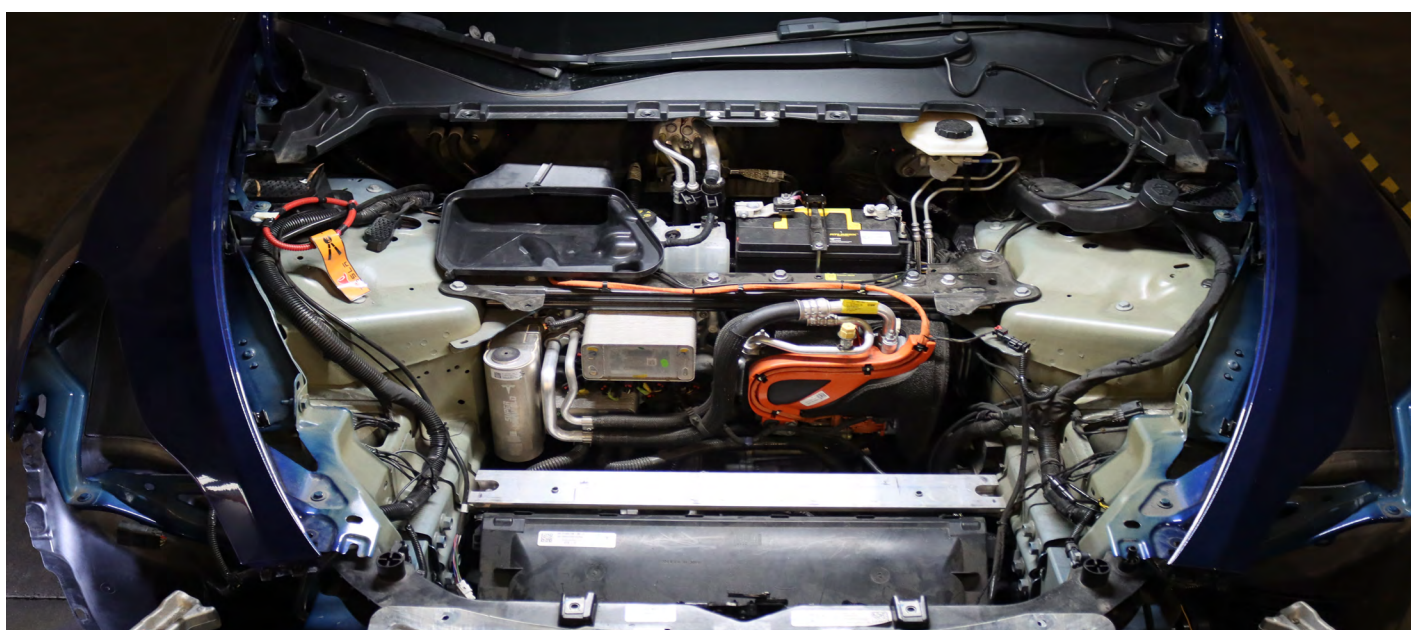


Disconnect the light connector and then proceed to remove the entire trunk storage tray.



STEP 2. REMOVE THE FILTER ASSEMBLY

To access the 12V battery, start by removing the filter assembly. Take out the two 10mm bolts.



STEP 3. REMOVE THE FRONT BUMPER

Begin by removing the push-in pins located on both sides of the wheel fender flare.



Use a panel popper tool to remove the fender flares by gently pulling outward.





Repeat the identical steps on the other side of the fender flare.



Remove the five 10mm bolts.



Remove the 10mm bolts, one on each side of the front bumper.



Afterwards, remove the push-in pins from the fender liner.





Repeat the identical steps on the other side.



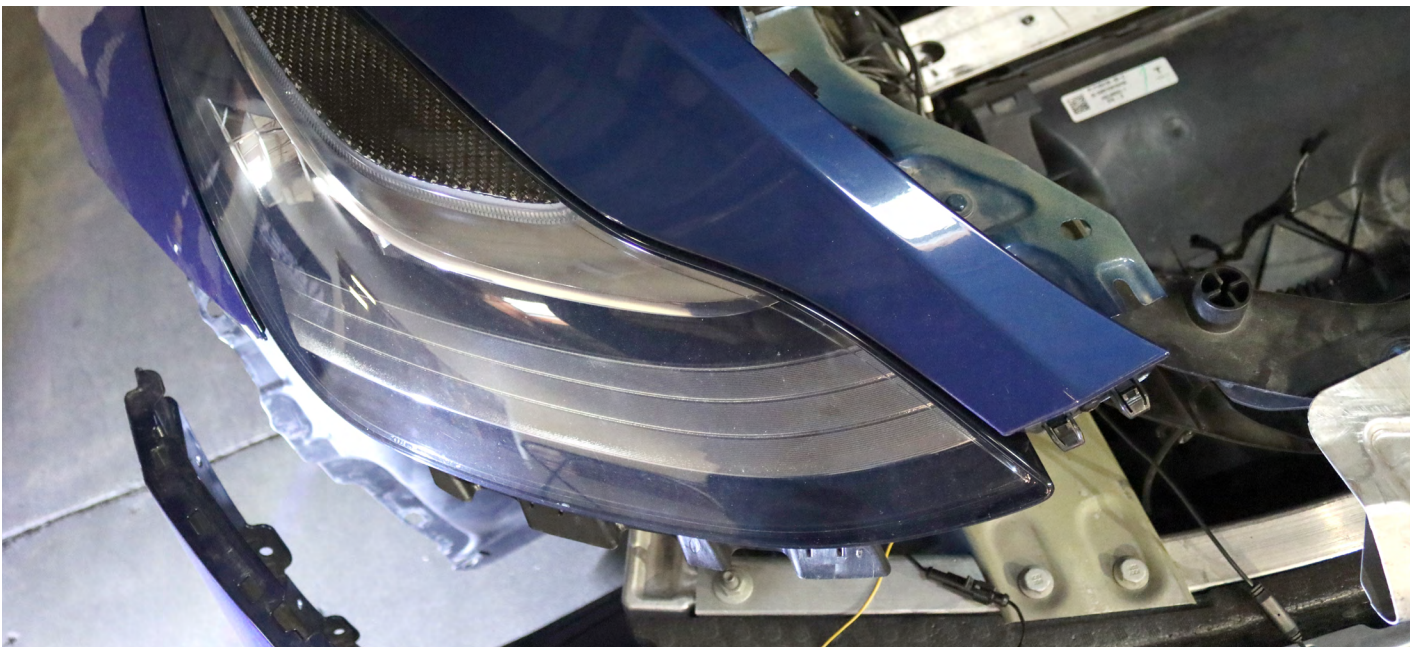
Gently detach the front bumper by pulling outward from the side, disengaging it from the mounting clips. Repeat the same steps for the other side.



To remove the entire bumper, unscrew the 10mm bolts positioned beneath the front bumper and ensure they are securely detached.



Before removing the front bumper entirely, make sure to disconnect the lights' connections. Afterward, proceed with the removal and set the bumper aside for later reinstallation.

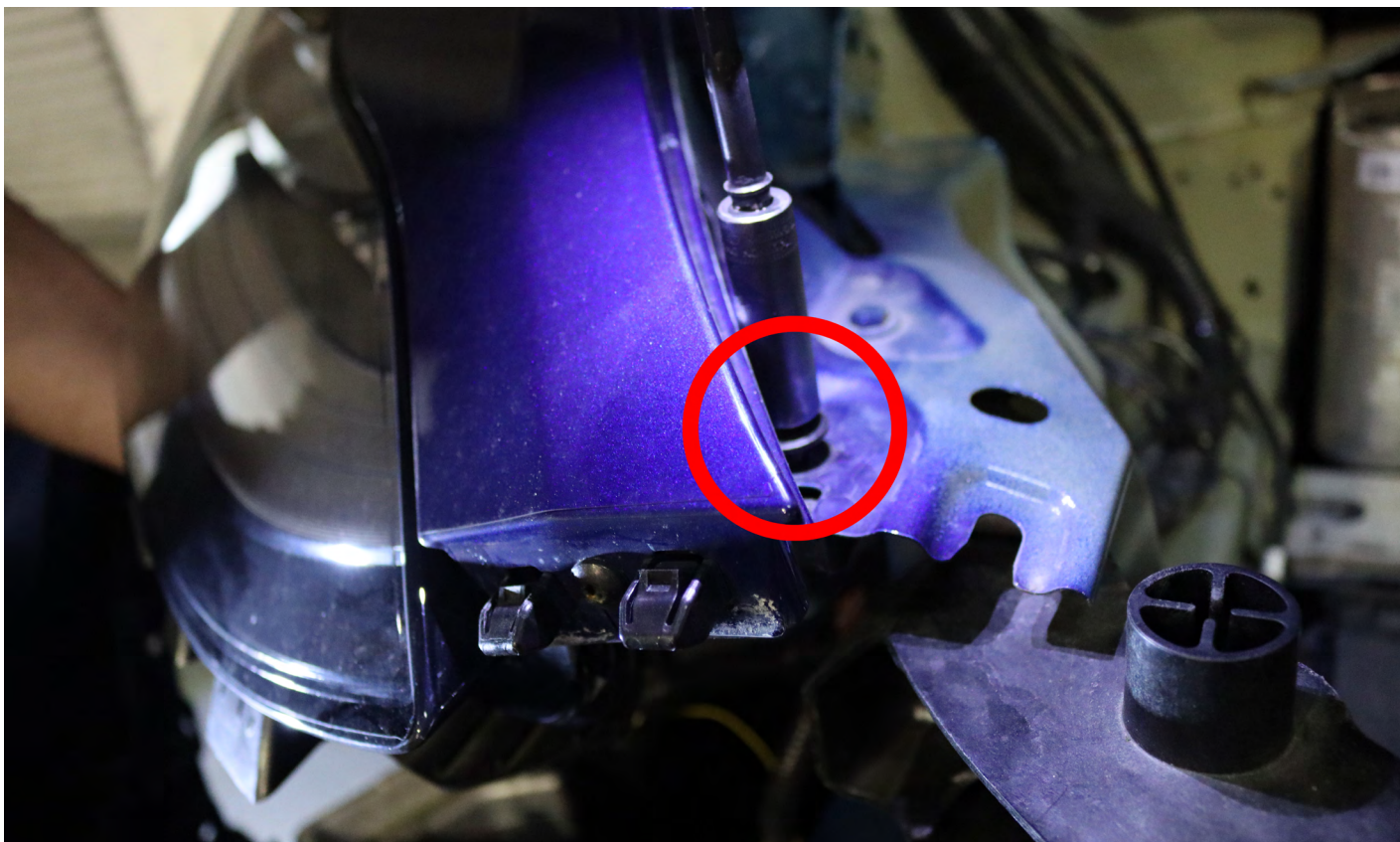


STEP 4. REMOVE THE HEADLIGHT BOLTS

Remove the 10mm bolt securing the headlight assembly from the side.



Unscrew the 10mm bolt located at the top of the headlight assembly. Follow the same steps on the opposite side of the headlight assembly.



STEP 5. REMOVE THE HEADLIGHTS

Gently pull the headlight assembly outward to disengage.
Unplug the headlight's sockets to complete the headlight's removal.



Follow the same steps to remove the other side of the headlight.



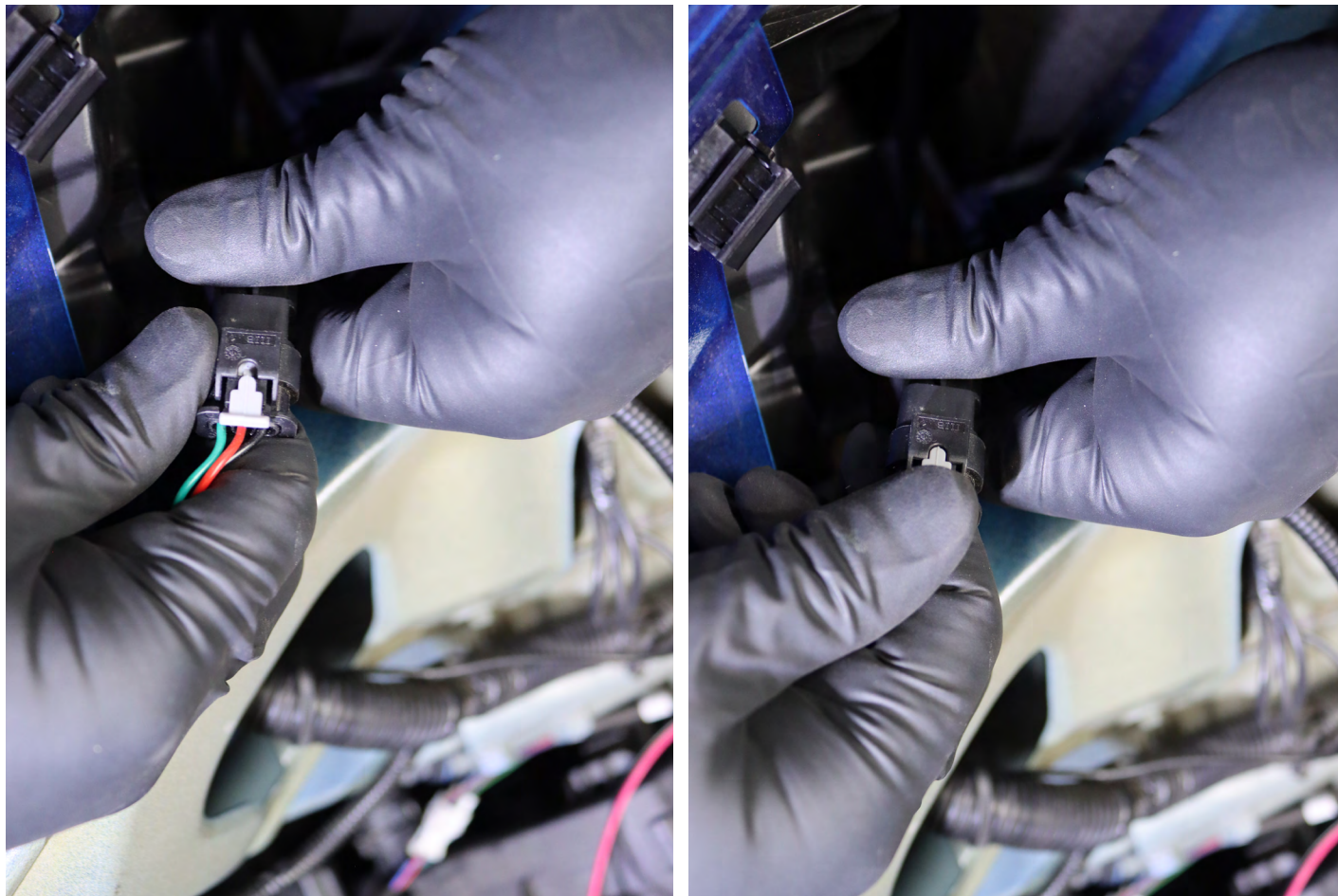
PART II INSTALL HEADLIGHTS



STEP 1. INSTALL THE HEADLIGHTS

First, connect the headlight socket to the new ALPHAREX headlight assembly.

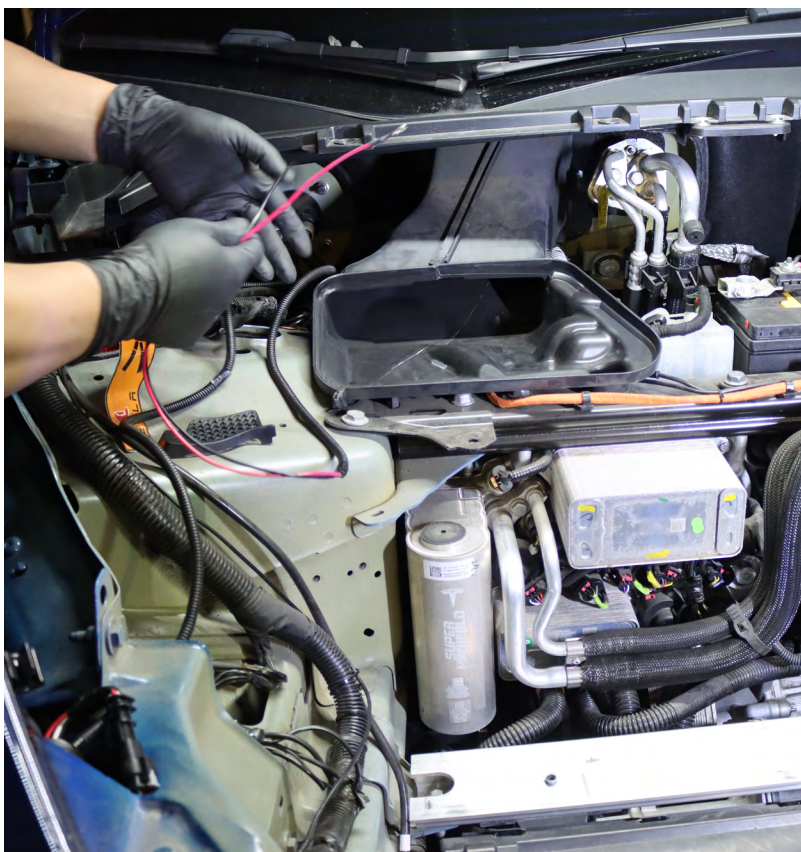
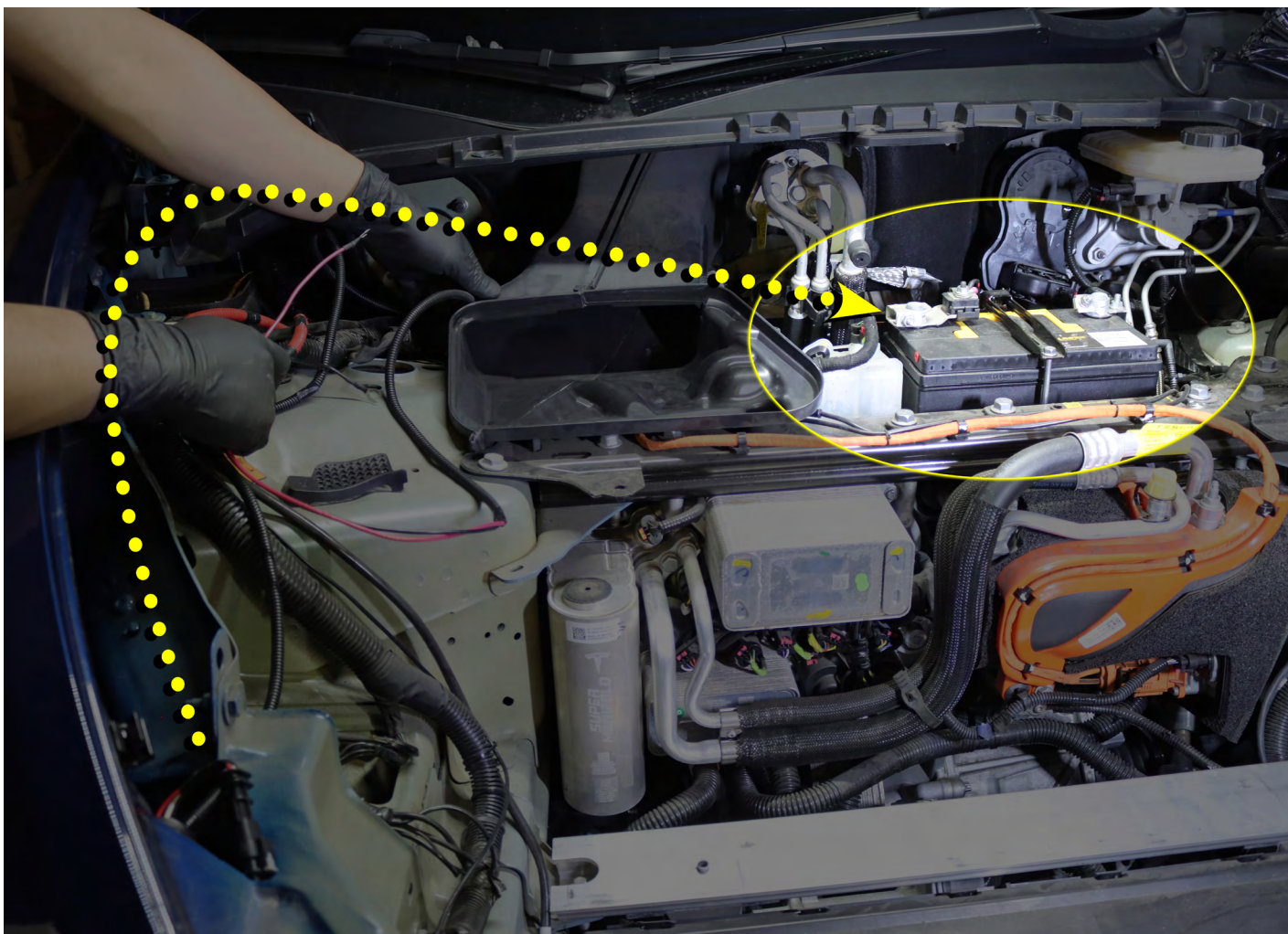
DO NOT USE DIELECTRIC GREASE!



Securely install the headlight into the vehicle and tighten the two 10mm bolts in place.



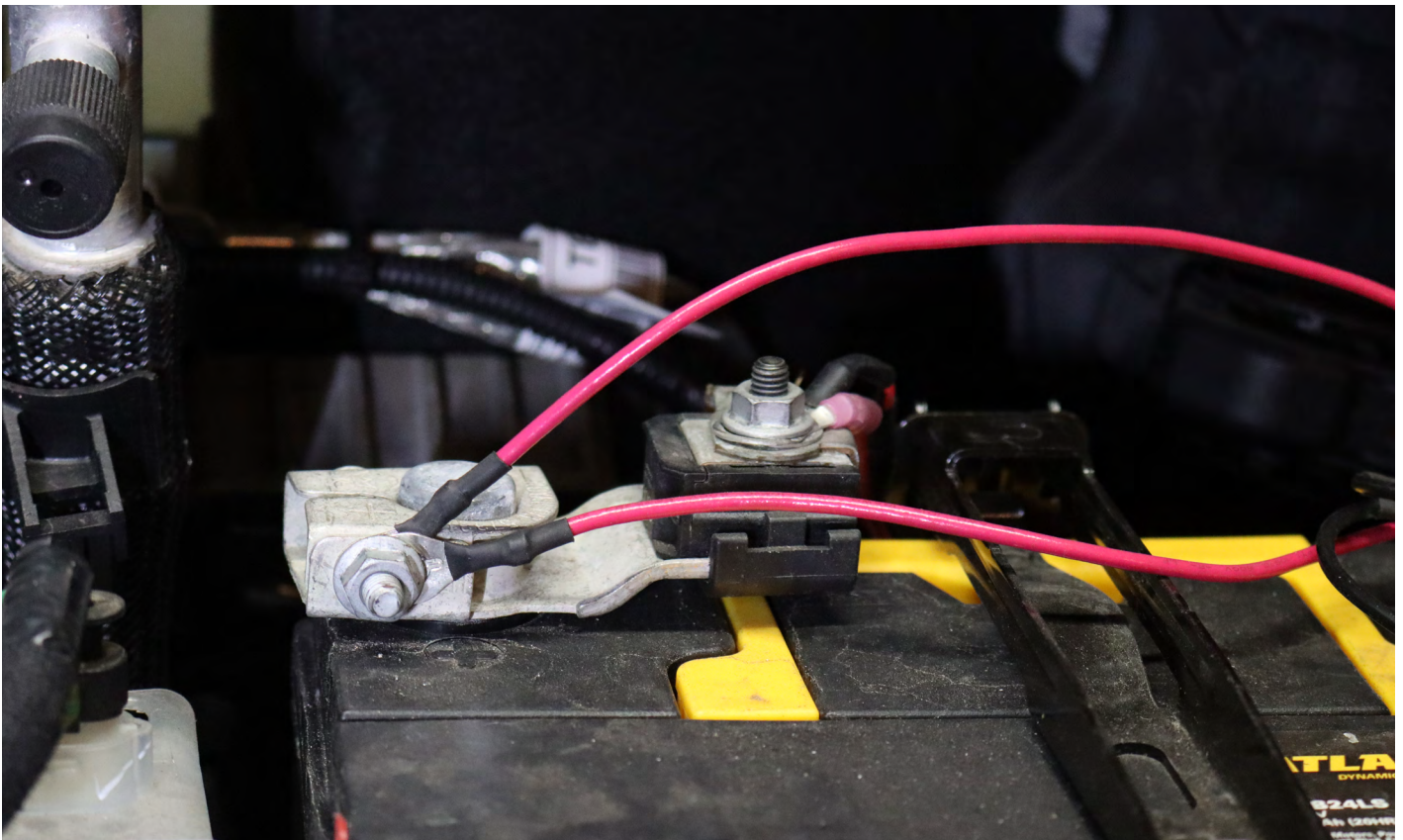
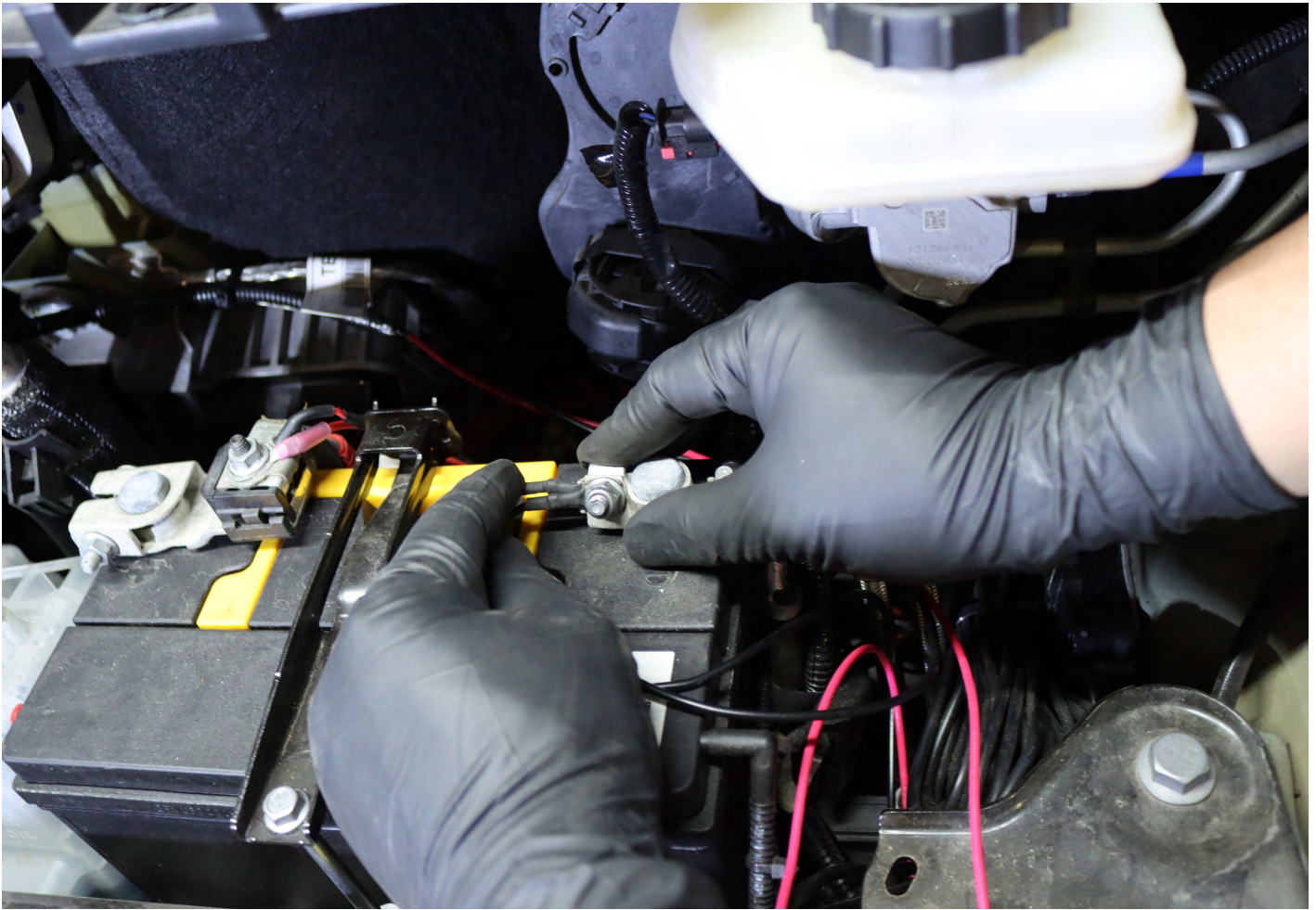
Next, route both the positive and negative wires to the 12V battery terminal.

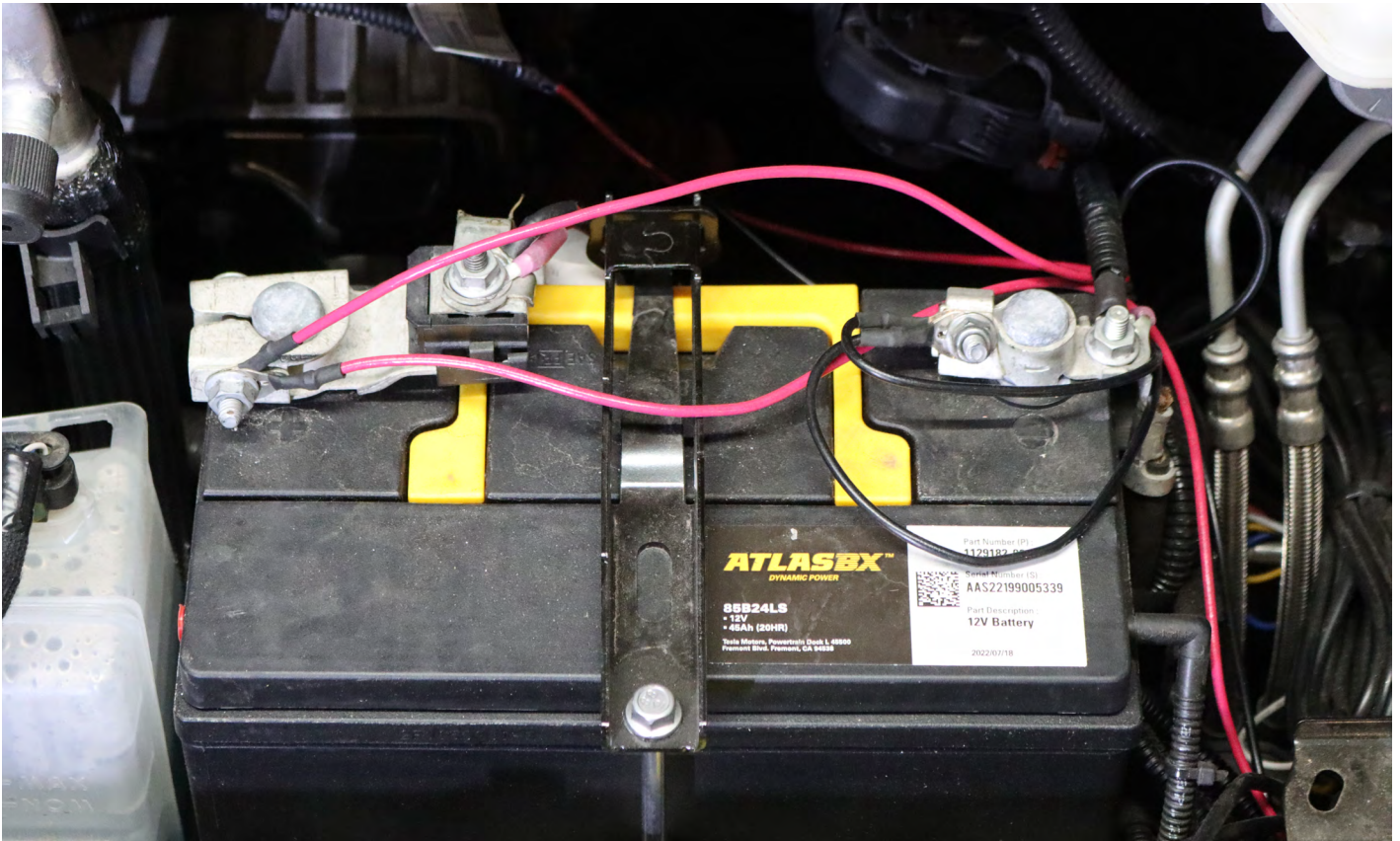


Repeat the identical process on the opposite side of the headlight assembly. Install the two 10mm bolts, and then route both the positive and negative wires to the 12V battery terminal.



Now that you have routed both the positive and negative wires to the 12V battery terminal, proceed to install the black wires to the negative terminal and the red wires to the positive terminal.





To complete the installation, reverse the removal process, ensuring all previous steps are followed in the opposite order.





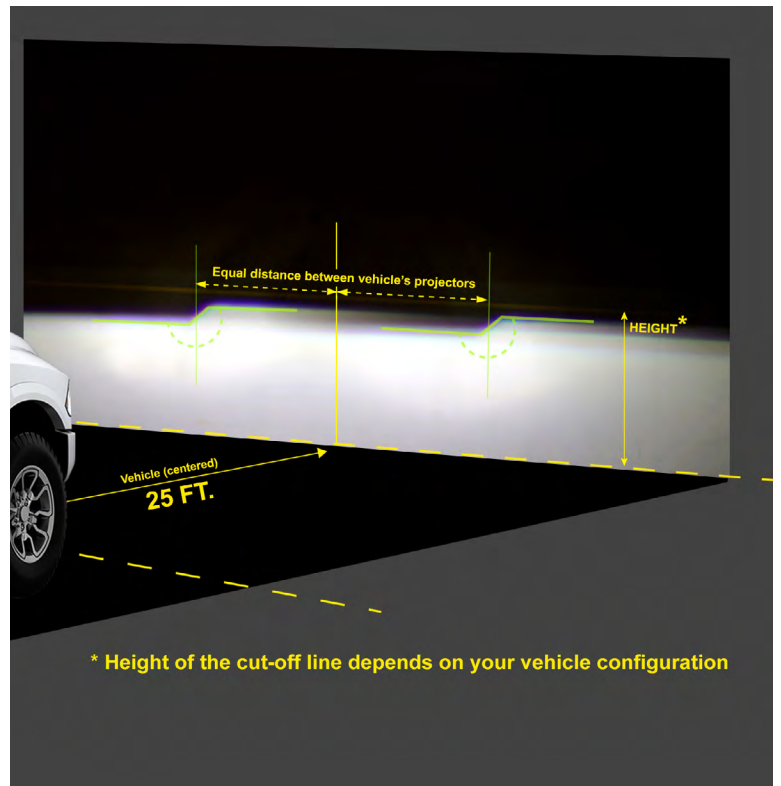
STEP 2. TEST THE HEADLIGHT FUNCTIONS

Test the functions of your ALPHAREX headlights to ensure everything works properly.



STEP 3. ADJUST HEADLIGHT LEVEL

Once everything has been tested, aim your ALPHAREX headlights by parking 25ft from a wall and level the headlight evenly.



STEP 4. COMPLETE INSTALLATION

Congratulations! You have completed the installation for ALPHAREX 20-24 Tesla Model Y HEADLIGHTS.

